

Product datasheet for RC218225

FAM89B (NM_001098785) Human Tagged ORF Clone

Product data:

Product Type: Expression Plasmids
Product Name: FAM89B (NM_001098785) Human Tagged ORF Clone
Tag: Myc-DDK
Symbol: FAM89B
Synonyms: LRAP25; MTRV; MTRV1
Mammalian Cell Selection: Neomycin
Vector: pCMV6-Entry (PS100001)
E. coli Selection: Kanamycin (25 ug/mL)
ORF Nucleotide Sequence: >RC218225 representing NM_001098785
 Red=Cloning site Blue=ORF Green=Tags(s)

TTTTGTAATACGACTCACTATAGGGCGCCGGGAATTCGTCGACTGGATCCGGTACCGAGGAGATCTGCC
 GCC**CGATCGCC**

ATGAACGGGCTGCCCTCGGCAGAGGGCGCCGGGGCGGGCTGCGCTTTGGCCGGGCTCCACCGCTGC
 CGCGCGGCTCAGCGGCTCCTAATGCGAGCGGGGGCTCGTGGCGGGAGCTGGAGCGCTACAGCCA
 GCGCAGCCGATCCACGACGAGCTGAGCCGCGCCCGCCCGCCCGGACGGGCCCCGCCACGCCCGGC
 GCCGCAACGCGGGACCCGAGCCGCGCCGCTGCTCAACCTCGACTCAGCGCTGGCCGCGCTGC
 GCAAGGAGATGGTGGGGCTGCGGCAGTTGGACATGTCCTTGTGTGCCAGCTGTGGGGCTGTACGAGTC
 AATCCAGGACTACAAACCTGTGCCAAGACCTGAGCTTCTGCCAGGACCTGTCATCCTCCCTCCATTGC
 GACAGCTCCTACCCACCGGATGCGGGCCTGTCTGACGACGAGGAGCTCCCGATGCCAGCCTGCCTCCTG
 ACCCGCCACCCCTTACTGTGCCAGACGACAATGCCCGTGACCAAGTGGCTGCAGGATGCCTTCCACAT
 CAGCCTC

ACGCGTACGCGGGCGCTCGAGCAGAACTCATCTCAGAAGAGGATCTGGCAGCAAATGATATCCTGGATT
 ACAAGGATGACGACGATAAGGTTTAA

Protein Sequence: >RC218225 representing NM_001098785
 Red=Cloning site Green=Tags(s)

MNGLPSAEAPGGAGCALAGLPPLPRGLSGLLNASGGSWRELERVYSQRSRIHDELSRAARAPDGPRHAAG
 AANAGPAAGPRRPVNLDSALAALRKEMVGLRQLDMSLLCQLWGLYESIQDYKHLQDL SFCQDLSSSLHS
 DSSYPDAGLSDDEEPPDASLPDPPPLTVPQTHNARDQWLQDAFHISL

TRTRPLEQKLISEEDLAANDILDYKDDDDKV



[View online »](#)

Chromatograms: https://cdn.origene.com/chromatograms/mk8016_b10.zip

Restriction Sites: SgfI-MluI

Cloning Scheme:



ACCN: NM_001098785

ORF Size: 567 bp

OTI Disclaimer: The molecular sequence of this clone aligns with the gene accession number as a point of reference only. However, individual transcript sequences of the same gene can differ through naturally occurring variations (e.g. polymorphisms), each with its own valid existence. This clone is substantially in agreement with the reference, but a complete review of all prevailing variants is recommended prior to use. [More info](#)

OTI Annotation: This clone was engineered to express the complete ORF with an expression tag. Expression varies depending on the nature of the gene.

Components: The ORF clone is ion-exchange column purified and shipped in a 2D barcoded Matrix tube containing 10ug of transfection-ready, dried plasmid DNA (reconstitute with 100 ul of water).

Reconstitution Method:

1. Centrifuge at 5,000xg for 5min.
2. Carefully open the tube and add 100ul of sterile water to dissolve the DNA.
3. Close the tube and incubate for 10 minutes at room temperature.
4. Briefly vortex the tube and then do a quick spin (less than 5000xg) to concentrate the liquid at the bottom.
5. Store the suspended plasmid at -20°C. The DNA is stable for at least one year from date of shipping when stored at -20°C.

RefSeq: [NM_001098785.2](#)

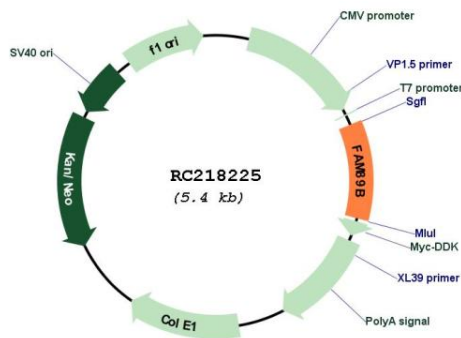
RefSeq Size: 1467 bp

RefSeq ORF: 570 bp

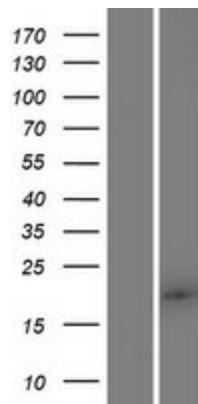
Locus ID: 23625

UniProt ID: [Q8N5H3](#)
Cytogenetics: 11q13.1
Protein Families: Druggable Genome
MW: 20 kDa
Gene Summary: Negatively regulates TGF-beta-induced signaling; in cooperation with SKI prevents the translocation of SMAD2 from the nucleus to the cytoplasm in response to TGF-beta. Acts as an adapter that mediates the specific recognition of LIMK1 by CDC42BPA and CDC42BPB in the lamellipodia. LRAP25-mediated CDC42BPA/CDC42BPB targeting to LIMK1 and the lamellipodium results in LIMK1 activation and the subsequent phosphorylation of CFL1 which is important for lamellipodial F-actin regulation.[UniProtKB/Swiss-Prot Function]

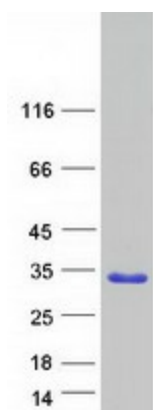
Product images:



Circular map for RC218225



Western blot validation of overexpression lysate (Cat# [LY420674]) using anti-DDK antibody (Cat# [TA50011-100]). Left: Cell lysates from untransfected HEK293T cells; Right: Cell lysates from HEK293T cells transfected with RC218225 using transfection reagent MegaTran 2.0 (Cat# [TT210002]).



Coomassie blue staining of purified FAM89B protein (Cat# [TP318225]). The protein was produced from HEK293T cells transfected with FAM89B cDNA clone (Cat# RC218225) using MegaTran 2.0 (Cat# [TT210002]).