

## Product datasheet for **RC218219**

### **HNF6 (ONECUT1) (NM\_004498) Human Tagged ORF Clone**

#### **Product data:**

Product Type:	Expression Plasmids
Product Name:	HNF6 (ONECUT1) (NM_004498) Human Tagged ORF Clone
Tag:	Myc-DDK
Symbol:	HNF6
Synonyms:	HNF-6; HNF6; HNF6A
Mammalian Cell Selection:	Neomycin
Vector:	pCMV6-Entry (PS100001)
E. coli Selection:	Kanamycin (25 ug/mL)



[View online »](#)

**ORF Nucleotide Sequence:**

>RC218219 representing NM\_004498  
 Red=Cloning site Blue=ORF Green=Tags(s)

TTTTGTAATACGACTCACTATAGGGCGGCCGGGAATTCGTCGACTGGATCCGGTACCGAGGAGATCTGCC  
 GCC**CGGATCGCC**

ATGAACGCGCAGCTGACCATGGAAGCGATCGGCGAGCTGCACGGGTGAGCCATGAGCCGGTGCCCGCCC  
 CTGCCGACCTGCTGGGCGCAGCCCCACGCGCGCAGCTCCGTGGCGCACCGCGGACCCACCTGCCCCC  
 CGCGCACCCGCGCTCCATGGGCATGGCGTCCCTGCTGGACGGCGCAGCGCGGGGAGATTACCACCAC  
 CACCACCGGGCCCTGAGCACAGCCTGGCCGGCCCTGCATCCCACCATGACCATGGCCTGCGAGACTC  
 CCCCAGGTATGAGCATGCCACCACCTACACCACCTTGACCCCTCTGCAGCCGCTGCCTCCCATCTCCAC  
 AGTCTCGGACAAGTTCACCCACCATCACCACCACCATCACCACCACCCCGCACCACCACAGCGC  
 CTGGCGGCAACGTGAGCGGTAGCTTACGCTCATGCGGGATGAGCGGGGTGGCTCCATGAATAACC  
 TCTATACCCCTACCACAAGGACGTGGCCGGCATGGGCCAGGCCTCTCGCCCTCTCCAGCTCCGGTCT  
 GGGCAGCATCCAACTCCAGCAAGGGCTCCCCACTATGCCACCCGGGGCCGCCATGCCACCGAC  
 AAGATGCTCACCCCAACGGCTTCGAAGCCACCACCCGGCCATGCTCGCCGCCACGGGAGCAGCACC  
 TCACGCCACCTCGCCGGCATGGTGCCATCAACGGCCTTCTCCGCACCATCCCCACGCCACCTGAA  
 CGCCAGGGCCACGGCAACTCCTGGGCACAGCCGGGAGCCAAACCTTCGGTGACCGCGCGCAGGTC  
 AGCAATGGAAGTAATTCAGGTGAGTGAAGAGATCAATACCAAAGAGGTGGCGCAGCGTATCACCACCG  
 AGCTCAAGCGCTACAGCATCCCACAGGCCATCTTCGCGCAGAGGGTGTCTGCGCCTCCAGGGGACCT  
 CTCGGACTGTGCGCAACCCCAACCTGGAGCAAACAAATCCGGCCGGGAGACCTCCGGAGGATG  
 TGAAGTGGTGCAGGAGCCGGAGTTCAGCGCATGTCCGCGCTCCGCTTAGCAGCATGCAAAAGGAAAG  
 AACAGAACATGGGAAGGATAGAGGCAACACACCCAAAAGCCAGGTTGGTCTTACAGATGTCCAGCG  
 TCGAACTTACATGCAATATTCAGGAAAATAAGCGTCCATCCAAAGAATTGCAAATCACCATTTCCAG  
 CAGCTGGGTTGGAGCTGAGCACTGTGAGCAACTTCTTATGAACGCAAGAAGGAGGAGTCTGGACAAGT  
 GGCAGGACGAGGGCAGCTCCAATCAGGCAACTCATCTTCTTATCAAGCACTTGTACCAAAGCA

**ACGCGT**ACGCGGCCGCTCGAGCAGAACTCATCTCAGAAGAGGATCTGGCAGCAAATGATATCCTGGATT  
 ACAAGGATGACGACGATAAGGTTTAA

**Protein Sequence:**

>RC218219 representing NM\_004498  
 Red=Cloning site Green=Tags(s)

MNAQLTMEAI GELHGV SHEPVPAPADLLGGSPHARSSVAHRGSHLPPAHPRSMGMASLLDGGSGGGDYHH  
 HHRAP EHS LAGPLHPTMTMACETPPGMSMPTTYTTL TPLQLPPISTVSDKFPHHHHHHHHHHHHHHHQR  
 LAGNVSGSFTLMRDERGLASMNNLYTPYHKDVAGMGQSL SPLSSSGLGSIHNSQQGLPHYAHPGAAMPTD  
 KMLTPNGFEAHPAMLGRHGEQHL TPTSAGMVPINGLPHPHHAHLNAQGHGQLLTAREPNPSVTGAQV  
 SNGSNSGQMEEINTKEVAQRITTELKRYIPQAI FAQRVLCRSQGLSDLLRNPKPWSKLSGRETFRRM  
 WKWLQEPFQRMSALRLAACKRKEQEHGKDRGNTPKKPRLVFTDVQRRTLHAI FKENKRPSKELQITISQ  
 QLGLELSTVSNFFMNARRRSLDKWQDEGSSNSGNSSSSSSTCTKA

**TR**TRPLEQKLISEEDLAANDILDYKDDDDKV

**Chromatograms:**

[https://cdn.origene.com/chromatograms/mk6096\\_g03.zip](https://cdn.origene.com/chromatograms/mk6096_g03.zip)

**Restriction Sites:**

Sgfl-Mlul

**Cloning Scheme:**


**ACCN:** NM\_004498

**ORF Size:** 1395 bp

**OTI Disclaimer:** The molecular sequence of this clone aligns with the gene accession number as a point of reference only. However, individual transcript sequences of the same gene can differ through naturally occurring variations (e.g. polymorphisms), each with its own valid existence. This clone is substantially in agreement with the reference, but a complete review of all prevailing variants is recommended prior to use. [More info](#)

**OTI Annotation:** This clone was engineered to express the complete ORF with an expression tag. Expression varies depending on the nature of the gene.

**Components:** The ORF clone is ion-exchange column purified and shipped in a 2D barcoded Matrix tube containing 10ug of transfection-ready, dried plasmid DNA (reconstitute with 100 ul of water).

**Reconstitution Method:**

1. Centrifuge at 5,000xg for 5min.
2. Carefully open the tube and add 100ul of sterile water to dissolve the DNA.
3. Close the tube and incubate for 10 minutes at room temperature.
4. Briefly vortex the tube and then do a quick spin (less than 5000xg) to concentrate the liquid at the bottom.
5. Store the suspended plasmid at -20°C. The DNA is stable for at least one year from date of shipping when stored at -20°C.

**Note:** Plasmids are not sterile. For experiments where strict sterility is required, filtration with 0.22um filter is required.

**RefSeq:** [NM\\_004498.4](#)

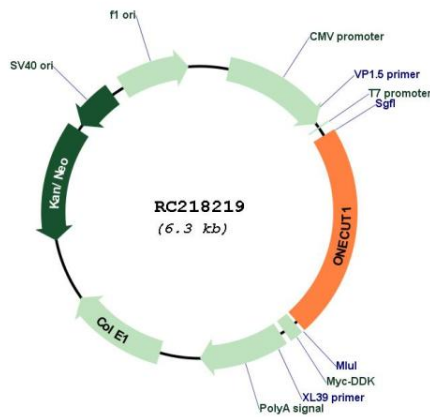
**RefSeq Size:** 1925 bp

**RefSeq ORF:** 1398 bp

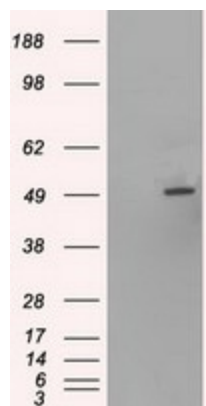
**Locus ID:** 3175

**UniProt ID:** [Q9UBC0](#)  
**Cytogenetics:** 15q21.3  
**Protein Families:** ES Cell Differentiation/IPS, Transcription Factors  
**Protein Pathways:** Maturity onset diabetes of the young  
**MW:** 50.8 kDa  
**Gene Summary:** This gene encodes a member of the Cut homeobox family of transcription factors. Expression of the encoded protein is enriched in the liver, where it stimulates transcription of liver-expressed genes, and antagonizes glucocorticoid-stimulated gene transcription. This gene may influence a variety of cellular processes including glucose metabolism, cell cycle regulation, and it may also be associated with cancer. Alternative splicing results in multiple transcript variants. [provided by RefSeq, Dec 2012]

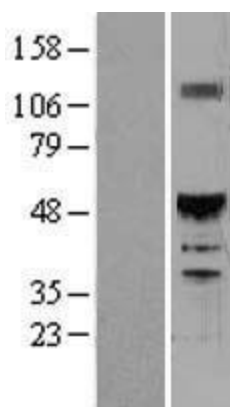
### Product images:



Circular map for RC218219



HEK293T cells were transfected with the pCMV6-ENTRY control (Cat# [PS100001], Left lane) or pCMV6-ENTRY HNF6 (Cat# RC218219, Right lane) cDNA for 48 hrs and lysed. Equivalent amounts of cell lysates (5 ug per lane) were separated by SDS-PAGE and immunoblotted with anti-HNF6 (Cat# [TA500196]). Positive lysates [LY401429] (100ug) and [LC401429] (20ug) can be purchased separately from OriGene.



Western blot validation of overexpression lysate (Cat# [LY401429]) using anti-DDK antibody (Cat# [TA50011-100]). Left: Cell lysates from untransfected HEK293T cells; Right: Cell lysates from HEK293T cells transfected with RC218219 using transfection reagent MegaTran 2.0 (Cat# [TT210002]).