

Product datasheet for **RC218212**

IL31RA (NM_139017) Human Tagged ORF Clone

Product data:

Product Type:	Expression Plasmids
Product Name:	IL31RA (NM_139017) Human Tagged ORF Clone
Tag:	Myc-DDK
Symbol:	IL31RA
Synonyms:	CRL; CRL3; GLM-R; GLMR; GPL; hGLM-R; IL-31RA; PLCA2; PRO21384; zcytoR17
Mammalian Cell Selection:	Neomycin
Vector:	pCMV6-Entry (PS100001)
E. coli Selection:	Kanamycin (25 ug/mL)



[View online »](#)

ORF Nucleotide Sequence:

>RC218212 representing NM_139017
 Red=Cloning site Blue=ORF Green=Tags(s)

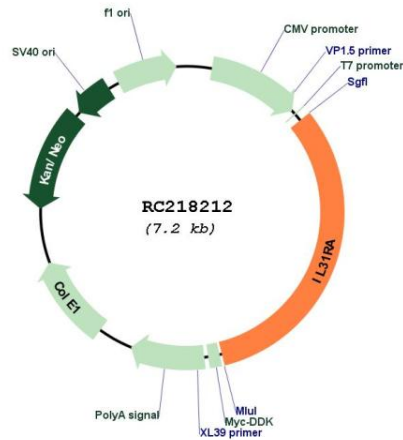
TTTTGTAATACGACTCACTATAGGGCGGCCGGAATTCGTGACTGGATCCGGTACCGAGGAGATCTGCC
 GCC**CGGATCGCC**

ATGTGCATCAGGCAACTCAAGTTTTCCACCACGGCATGTGTCTGTGAATGTCCGCAAACATTCTCTCTC
 CCCAGCCTTCATGTGTTAACCTGGGGATGATGTGGACCTGGGCACTGTGGATGCTCCCTTCACTCTGCAA
 ATTCAGCCTGGCAGCTCTGCCAGCTAAGCCTGAGAACATTTCTGTGTCTACTACTATAGAAAAATTTA
 ACCTGCACTTGGAGTCCAGGAAAGGAAACCAGTTATACCCAGTACACAGTTAAGAGAACTTACGCTTTTG
 GAGAAAAACATGATAATTGTACAACCAATAGTTCTACAAGTAAAATCGTGCTTCGTGCTTTTTTCTCT
 TCCAAGAATAACGATCCCAGATAATTATACCATTGAGGTGGAAGCTGAAAATGGAGATGGTGAATTA
 TCTCATATGACATACTGGAGATTAGAGAACATAGCGAAAACCTGAACACCTAAGATTTCCGTGTGAAAC
 CAGTTTTGGGCATCAAACGAATGATTCAAATTGAATGGATAAAGCCTGAGTTGGCGCCTGTTTCATCTGA
 TTTAAAATACACACTTCGATTCCAGGACAGTCAACAGTACCAGCTGGATGGAAGTCAACTTCGCTAAGAAC
 CGTAAGGATAAAAACCAACGTACAACCTCACGGGGCTGCAGCCTTTTACAGAATATGTCATAGCTCTGC
 GATGTGCGGTCAAGGAGTCAAAGTTCTGGAGTGACTGGAGCCAAGAAAAAATGGGAATGACTGAGGAAGA
 AGCTCCATGTGGCCTGGAAGTGTGGAGAGTCTGAAACCAGCTGAGGCGGATGGAAGAAGGCCAGTGCGG
 TTGTTATGGAAGAAGGCAAGAGGAGCCCGAGTCTAGAGAAAACACTTGGCTACAACATATGGTACTATC
 CAGAAAGCAACTAACCTCACAGAAAACATGAACACTACTAACCAGCAGCTTGAAGTGCATCTGGGAGG
 CGAGAGCTTTGGGTGTCTATGATTTCTTATAATTCTCTTGGGAAGTCTCCAGTGGCCACCCTGAGGATT
 CCAGCTATTCAAGAAAAATCATTTCAGTGCATTGAGGTGCATGCAGGCTCGCTTGGTGTGGACTAG
 TGGTGAAGTGGCAAAGCTCTGCTTAGACGTGAACACTTGGATGATTGAATGGTTCCGGATGTGGACTC
 AGAGCCACACCTTTCTGGGAATCTGTGTCTCAGGCCACGAACTGGACGATCCAGCAAGATAAATTA
 AAACCTTTCTGGTGTATAACATCTCTGTGTATCCAATGTTGCATGACAAAGTTGGCGAGCCATATTCCA
 TCCAGGCTTATGCCAAAGAAGGCGTTCCATCAGAAGTCTGAGACCAAGGTGGAGAACATTGGCGTGAA
 GACGGTACGATCACATGGAAAGAGATTCCAAGAGTGAAGAAAGGATATCATCTGCAACTACACCATC
 TTTTACCAAGCTGAAGGTGGAAAAGGATTCTCCAAGACAGTCAATTCCAGCATCTGCAGTACGGCCTGG
 AGTCCCTGAAACGAAAGACCTCTTACATTGTTCCAGTGCATGGCCAACACCAGTGTGGGGAAACCAACGG
 GACCAGCATAAAATTTCAAGACATTGTCATTTCAGTGTCTTTGAGATTATCCTCATAACTTCTCTGATTGGT
 GGAGGCCCTTCTTATTCTCATTATCCTGACAGTGGCATATGGTCTCAAAAAACCAACAAATTGACTCATC
 TGTGTTGGCCACCGTTCACCAACCTGCTGAAAGTAGTATAGCCACATGGCATGGAGATGATTTCAAGGA
 TAAGCTAAACCTGAAGGAGTCTGATGACTCTGTGAACACAGAAGACAGGATCTTAAAACCATGTTCCACC
 CCCAGTGACAAGTTGGTATTGACAAGTTGGTGGTGAACCTTTGGGAATGTTCTGCAAGAAATTTTACAG
 ATGAAGCCAGAACGGGTGAGGAAAACATTTAGGAGGGGAAAAGAATGGGTATGTGACCTGCCCTTCAG
 GCCTGATTGTCCCTGGGAAAAGTTTTGAGGAGCTCCAGTTTACCTGAGATTCGCCAGAAAATCC
 CAATACCTACGTTTCGAGGATGCCAGAGGGGACCCGCCAGAAGCCAAAGAGCAGCTTCTTTTTCTGGTC
 AAAGTTTGTAGTACCAGATCATCTGTGTGAGGAAGGAGCCCCAAATCCATATTTGAAAAATTCAGTGACAGC
 CAGGGAATTTCTGTGTCTGAAAAACTTCCAGAGCACACCAAGGGAGAAGTC

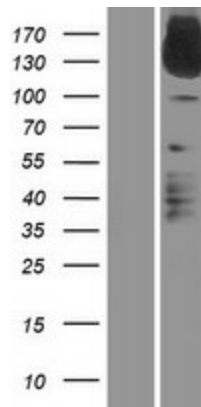
ACGCGTACGCGGCCGCTCGAGCAGAAACTCATCTCAGAAGAGGATCTGGCAGCAAATGATATCCTGGATT
 ACAAGGATGACGACGATAAGGTTTAA

OTI Disclaimer:	<p>Due to the inherent nature of this plasmid, standard methods to replicate additional amounts of DNA in E. coli are highly likely to result in mutations and/or rearrangements. Therefore, OriGene does not guarantee the capability to replicate this plasmid DNA. Additional amounts of DNA can be purchased from OriGene with batch-specific, full-sequence verification at a reduced cost. Please contact our customer care team at custsupport@origene.com or by calling 301.340.3188 option 3 for pricing and delivery.</p> <p>The molecular sequence of this clone aligns with the gene accession number as a point of reference only. However, individual transcript sequences of the same gene can differ through naturally occurring variations (e.g. polymorphisms), each with its own valid existence. This clone is substantially in agreement with the reference, but a complete review of all prevailing variants is recommended prior to use. More info</p>
OTI Annotation:	<p>This clone was engineered to express the complete ORF with an expression tag. Expression varies depending on the nature of the gene.</p>
Components:	<p>The ORF clone is ion-exchange column purified and shipped in a 2D barcoded Matrix tube containing 10ug of transfection-ready, dried plasmid DNA (reconstitute with 100 ul of water).</p>
Reconstitution Method:	<ol style="list-style-type: none">1. Centrifuge at 5,000xg for 5min.2. Carefully open the tube and add 100ul of sterile water to dissolve the DNA.3. Close the tube and incubate for 10 minutes at room temperature.4. Briefly vortex the tube and then do a quick spin (less than 5000xg) to concentrate the liquid at the bottom.5. Store the suspended plasmid at -20°C. The DNA is stable for at least one year from date of shipping when stored at -20°C.
RefSeq:	NM_139017.6
RefSeq Size:	2393 bp
RefSeq ORF:	2295 bp
Locus ID:	133396
UniProt ID:	Q8NI17
Cytogenetics:	5q11.2
Protein Families:	Druggable Genome, Transmembrane
MW:	86.3 kDa
Gene Summary:	<p>The protein encoded by this gene belongs to the type I cytokine receptor family. This receptor, with homology to gp130, is expressed on monocytes, and is involved in IL-31 signaling via activation of STAT-3 and STAT-5. It functions either as a monomer, or as part of a receptor complex with oncostatin M receptor (OSMR). Several alternatively spliced transcript variants encoding different isoforms have been noted for this gene.[provided by RefSeq, Jun 2011]</p>

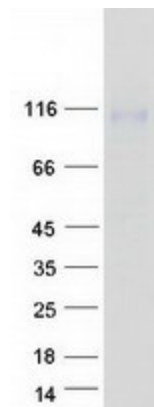
Product images:



Circular map for RC218212



Western blot validation of overexpression lysate (Cat# [LY408390]) using anti-DDK antibody (Cat# [TA50011-100]). Left: Cell lysates from untransfected HEK293T cells; Right: Cell lysates from HEK293T cells transfected with RC218212 using transfection reagent MegaTran 2.0 (Cat# [TT210002]).



Coomassie blue staining of purified IL31RA protein (Cat# [TP318212]). The protein was produced from HEK293T cells transfected with IL31RA cDNA clone (Cat# RC218212) using MegaTran 2.0 (Cat# [TT210002]).