

## Product datasheet for RC218211

### ARHGAP20 (NM\_020809) Human Tagged ORF Clone

#### Product data:

Product Type:	Expression Plasmids
Product Name:	ARHGAP20 (NM_020809) Human Tagged ORF Clone
Tag:	Myc-DDK
Symbol:	ARHGAP20
Synonyms:	RARHOGAP
Mammalian Cell Selection:	Neomycin
Vector:	pCMV6-Entry (PS100001)
E. coli Selection:	Kanamycin (25 ug/mL)
ORF Nucleotide Sequence:	>RC218211 representing NM_020809 Red=Cloning site Blue=ORF Green=Tags(s)

TTTTGTAATACGACTCACTATAGGGCGGCCGGAATTCGTCGACTGGATCCGGTACCGAGGAGATCTGCC  
GCC**CGATCGCC**

ATGGAAGCGATGTCCCCCAGCAGGAGACTCTAGGGGGACAGCCGGGGCGCTCCTCTTCCCTGACAGGAG  
TGTCTCGGCTCGCGGGAGGCAGCTGCACCAAGAAGAAAATGAAAACACTAGCAGAAAGGAGGAGGAGCGC  
TCCATCTTTATCCTGGATAAAGCCCTACAAAAACGGCCTACTACCAGGGACAGTCCTTCTGCTAGTGTT  
GACACATGCACATTTCTGTCATCATTAGTGTGCTCCAATAGGACTCTGCTGATTGATGGCCGGGCAGAAC  
TCAAAAGAGGCCCTCCAGAGGCAGGAGCGGCATCTTTTCCTATTCAATGATCTGTTTGTGGCCAAAAT  
CAAATATAACAATAACTTTAAGATAAAAAATAAAATTAATTAATGATATGTGGACAGCAAGCTGTGTG  
GATGAAGTGGGAGAAGGCAACCAATGCCATGAAATCCTTTGTTTGGGCTGGCCACAGTGAACCTTTG  
TGGCCACTTTTCAGTTCTCCAGAACAAAAGGACAAATGGCTCTCTCTCCTTCAGAGATACATCAATCTAGA  
GAAAGAAAAGGACTACCCGAAGAGCATTCCCCTCAAAATCTTCGCAAGGACATTGGGAATTGTGCCTAC  
TCTAAACTATAACAGTAATGAATTCAGATACAGCGAATGAAGTTATCAACATGTCATTACCAATGCTAG  
GGATAACTGGCTCTGAGAGAGATTACCAGTTGTGGTCAATTCTGGCAAAGAAGAGGCTCCATACCCACT  
CATTGGGCATGAATATCCATATGGAATTAATAATGAGCCATCTTCGAGACTCTGCACTCCTGACACCGGGA  
TCAAAGGACTCTACCACCCCTTCAACCTCCAGGAGCCCTTCTTATGGAACAGCTCCCCGAGAGATGC  
AGTGCCAGTTTCATCTGAAGCCAGCCGCTGGCTGCAGCCAGCAACTGAGTGATTGAGGTCATGAGAC  
ATTTAAAAGGAGAAGATCTATCATAAACTGGGCCTTCTGGCGAGTTCTAGCACTCACCTGGACAACCTG  
CCCTCATCGCAACATCACCTATGCCAGGACAGCTCTTTGGAATTTCTCTGCCAAATATTTGTGAGAATG  
ACAATCTGCCAAACCTGTCTGGATATGCTTTTCTTTCTTAATCAAAAAGGACCTCTACCAAAGGTAT  
CTTCAGGCAATCAGCCAATGTGAAATCTGCAGAGAACTAAAAGAGAAATGAATTTCTGGAGTGAAGTA  
CACCTAGACTGTGAATCTATTTTGTGATAGCATCTGTCTTAAAGGATTTCTGCGAAATATTCAGGAA  
GTATTTTTTTCATCAGATCTCTATGATCACTGGTCTCTGTAATGGATCAAGGAAATGATGAAGAGAAAAT  
AAATACTGTTCAAAGGCTATTAGACCAGCTTCCGAGAGCCAATGTTGTTCTCCTAAGGTATCTTTTGGG



GTGTTACACAACATTGAGCAACATTCCTCATCCAATCAGATGACTGCATTTAATTTAGCTGTGTGTGTCG  
CTCCAAGTATTCTTTGGCCTCCTGCTTCTCCAGCCCAGAACTAGAAAACGAATTTACAAAAAGGTTTC  
CCTGCTTATACAATTTCTGATTGAGAATTGCCTTAGGATATTTGGAGAAGAAATCACTTCCCTCTCAGA  
GAGGTTTCAGTGAGATGTGACTAGAGAGAATGCCTCAGATATTTCTTGCTTTCACTGAATGACTCCT  
CCTATGACAGCTTGAAAAATGAGCTAAATGAGGATGTTGATGCACCATGCAGTGACTTGGTAAAGAACT  
TGGCCAGGGGAGCAGAAGCATGGACTCTGTCTTAACCCCTCAGTGACTATGATCTTGACCAGCCCGAGGTG  
GAAGGCCTTTTAAACCCTAAGCGACTTTGACTTGGCCATTCTAAAGATGAAGATGTTCAAATGAAACGGC  
CTCTTGAATCCAAGCCGGTGAACATTTTGTGTACACAAAAGATCCCACTGCGGGATCATGCCAGGGCCC  
ATCTGCCATGTGCACACCAGCTACCTGTCCACAGCTGCAGCAAATGCTGCAAAAAGCCTGAGGCGACAC  
CGGCGTTGCTCAGAGCCCAGCATCGACTATCTGGATTCAAAGCTTCTACCTCAGGGAGTTTTATCAGA  
AAAAGCTACGCAAGTCCAGCTGTGATGCAATTTCTTCTCAAAAAGATGAAGACTATCTGAAGCAGAATCA  
ACCCCTCAGGAGGAAGGAAAGACATGTTTTAAACAGAGTTTAGTCACAGGCACTGATGCAGCAAGAAA  
AATGCCACTACTCAAACACTAAGAAGAAAAGCTTGTCTGGTAGTGAAGGAAATCACGTGAAACTTTTCC  
CTAAGTCTAAGCCAGTGGCCATTTCTGTGGCATTTATAGTCTATGTCCTCACAGGATCATTCCAAGAA  
CCAGCCCTTTGATGTGAATACATCTGGATACTCCCAACACACAGCAGATGCCCTCAAGGTCGAAGG  
ACACATCGGGCGCTGCTCAGAGCCCAACATAGAAGACCAGAACCGCAAGTGACCTATCTCAGGGGAATTT  
ATTCAAAGAAAACAACATAAAAACAGCTGTGAAGCTGGTCTCTTGATGGAGAGGAGGATTATCTCAAACG  
GCATAAGTCTTTGCAAATGGAGGGGAGAAAGCTCATTAAATCAGAGTTTAGTCATGGGGATTGAGGTGGG  
AAGAGTAGTGCCAAAACAAAACACTGAGAAGGTTTTACCCCAAGATTAACCTTTGCCCAAGGACCA  
GCTATTCAGCTTATCTCCCAAGGCACTTCCCATCCGGCTCATCAGTAAGCTCCCAAGACAGTGTCTT  
TTCTCAGATTTCTGAACACTCTGTGTTACACCCACTGAGACTTCTCTCCAATAGATTGCACTTTTCAG  
GCTCAGAGAAAACGGGAAGACCTTCTCCTGACTTTAGCAATGCCAGCCATGTTTCCGGAATGCCGGTC  
CCTCATCAGGGCAGGCTTGCAGCCGCCAGCCTATACAAAGAAGGACACCATGGAGTGGCATTACAAAT  
GCATTCTGTAACCTTTCATCCCAGCACATGGTTGAGAAATGGTGTGGCCAGTTTGAAAAACTGGTCCCTC  
AAAAAGAAAGCAAAGGCAGCCAGACCAGAGGAAGAGAAAATAGCTTCTCAAAAAGGACCCTTAGAGCCAC  
CCCCACATGCTTCTGGTGTCCAGAAGCCAACACTGCAAGAGGAACAAAAAGACTTGCCTTAAGGGC  
AGCTGAAGGACTGTCCCCTGTGCAGTCAGCCAAAGGTGTAGTTCTTCTCCCTTCCAGGACTCAGAGAGA  
CACTGTAGCTCTCATTAGCCTGGTGGAGAGCAGACTTAAGCTGTGCATGAAGTCACATGAGGAAATAG  
AGCCTGGTAGTCAGAGCTCTTCTGGTTCTCTGCCTTGGGAAAGAGCCTCAGCCAGCTCTTGGACTTAGA  
GGATGCGACCAGCCAGACTCAGGGCCTACAGTGGTCTGCGACATTGAGGACAGGTATTTAACCAAAGAC  
ATT

ACGCGTACGCGGCGCTCGAGCAGAACTCATCTCAGAAGAGGATCTGGCAGCAAATGATATCCTGGATT  
ACAAGGATGACGACGATAAGGTTTAA

**Protein Sequence:** >RC218211 representing NM\_020809  
 Red=Cloning site Green=Tags(s)

```
MEAMSPQQETLGGQPGRSSSLTGVSRLAGGSCTKKMKMTLAERRRSAPSLILDKALQKRPTTRDPSASV
DTCTFLSSLVCSNRTLLIDGRAELKRGLQRQERHLFLFNDLFVVAIKIYNNFKIKNKIKLDMWTASCV
DEVGEGNTNAMKSFVLGWPTVNFVATFSSPEQDKWLSLLQRYINLEKEKDYPKSIPLKIFAKDIGNCAY
SKTITVMNSDTANEVINMSLPLMGLITGSDYQLWVNSGKEEAPYPLIGHEYPIKMSHLRDSALLTPG
SKDSTTPFNLQEPFLMEQLPREMQCFILKPSRLAAAQQLSDSGHKTFRRRRSIINWAFWRGSSTHLDNL
PSSPTSPMPGQLFGISLNICENDNLPKPVLDMLFFLNQKGPLTKGIFRQSANVKSCRELKEKLSNGVEV
HLDCEIFVIASVLKDFLRNIPGSIFFSDLYDHWVSVMDQGNDEEKINTVQRLDQLPRANVLLRRLFV
VLHNIHQHSSSNQMTAFNLAVCVAPSILWPPASSPELENEFTKKVSLLIQFLIENCLRIFGEEITSLFR
EVSVRCDTRENASDISCFQLNDSSYDLENELNEDVDAPCSDLVKKLGQGRSMDSVLTLSDYDLDPQEV
EGLLTLSDFDLAHSKDEDVQMKRPLESKPVNILEVYTKIPLRDHARAPSAMCTPSYLSTAAANAASLRRH
RRCSEPSIDYLSKLSYLREFYQKLRKSSCDAILSQKDEDYKQNPQLEEGKCFKQSLVTGTDVSKK
NATTQNTKKKSLSGSEGNHVKLPKSKPVAISVASYSMPSSQDHSKNQPFVNTSGYSPHTADALGKPR
THRRCEPNIEDQNRKLTYLRLGIYSKKQHKTSCEAGLLHGEEDYLKRHKSQMEGQKLIINQSLVMGIEVG
KSSATNQTEKVLPPRLNLCPRTSYSSLSPPGTSVSSQDSAFSQAISEHSVFTPTETSSPIDCTFQ
AQRKREDLSPDFSNASHVSGMPGSSGQACSRPAYTKKDTMEWHSQMHSVTLHPSTWLRNGVASLKNWSL
KKKAKAARPEEEKIASPKGLEPPPHASGVPEANSLQEEQKDLPLRAAEGSPVQSAQRCSPPQDSE
HCSSPFLVESRLKLCMKSHIEIEGSGSSGSLPWERASASSWTLEDATSPDSGPTVVDIEDRYLTKD
I
```

TRTRPLEQKLISEEDLAANDILDYKDDDDKV

**Chromatograms:** [https://cdn.origene.com/chromatograms/mk8016\\_a12.zip](https://cdn.origene.com/chromatograms/mk8016_a12.zip)

**Restriction Sites:** SgfI-MluI

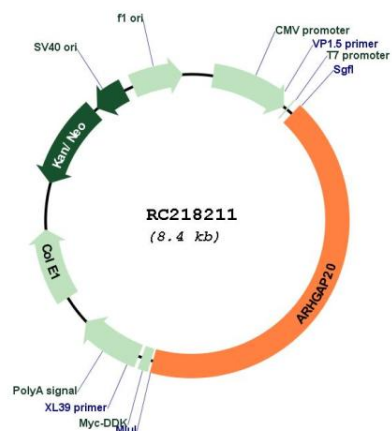
**Cloning Scheme:**



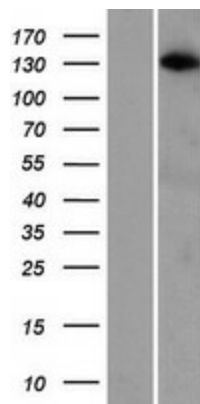
**ACCN:** NM\_020809

**ORF Size:** 3573 bp

<b>OTI Disclaimer:</b>	The molecular sequence of this clone aligns with the gene accession number as a point of reference only. However, individual transcript sequences of the same gene can differ through naturally occurring variations (e.g. polymorphisms), each with its own valid existence. This clone is substantially in agreement with the reference, but a complete review of all prevailing variants is recommended prior to use. <a href="#">More info</a>
<b>OTI Annotation:</b>	This clone was engineered to express the complete ORF with an expression tag. Expression varies depending on the nature of the gene.
<b>Components:</b>	The ORF clone is ion-exchange column purified and shipped in a 2D barcoded Matrix tube containing 10ug of transfection-ready, dried plasmid DNA (reconstitute with 100 ul of water).
<b>Reconstitution Method:</b>	<ol style="list-style-type: none"><li>1. Centrifuge at 5,000xg for 5min.</li><li>2. Carefully open the tube and add 100ul of sterile water to dissolve the DNA.</li><li>3. Close the tube and incubate for 10 minutes at room temperature.</li><li>4. Briefly vortex the tube and then do a quick spin (less than 5000xg) to concentrate the liquid at the bottom.</li><li>5. Store the suspended plasmid at -20°C. The DNA is stable for at least one year from date of shipping when stored at -20°C.</li></ol>
<b>RefSeq:</b>	<a href="#">NM_020809.3</a> , <a href="#">NP_065860.2</a>
<b>RefSeq Size:</b>	6207 bp
<b>RefSeq ORF:</b>	3576 bp
<b>Locus ID:</b>	57569
<b>UniProt ID:</b>	<a href="#">Q9P2F6</a>
<b>Cytogenetics:</b>	11q22.3-q23.1
<b>MW:</b>	132.4 kDa
<b>Gene Summary:</b>	The protein encoded by this gene is an activator of RHO-type GTPases, transducing a signal from RAP1 to RHO and impacting neurite outgrowth. [provided by RefSeq, Sep 2016]

**Product images:**


Circular map for RC218211



Western blot validation of overexpression lysate (Cat# [LY412280]) using anti-DDK antibody (Cat# [TA50011-100]). Left: Cell lysates from untransfected HEK293T cells; Right: Cell lysates from HEK293T cells transfected with RC218211 using transfection reagent MegaTran 2.0 (Cat# [TT210002]).