

Product datasheet for **RC218204**

RAB3IP (NM_175623) Human Tagged ORF Clone

Product data:

Product Type:	Expression Plasmids
Product Name:	RAB3IP (NM_175623) Human Tagged ORF Clone
Tag:	Myc-DDK
Symbol:	RAB3IP
Synonyms:	RABIN3; RABIN8
Mammalian Cell Selection:	Neomycin
Vector:	pCMV6-Entry (PS100001)
E. coli Selection:	Kanamycin (25 ug/mL)



[View online »](#)

ORF Nucleotide Sequence:

>RC218204 representing NM_175623
 Red=Cloning site Blue=ORF Green=Tags(s)

TTTTGTAATACGACTCACTATAGGGCGGCCGGAATTCGTCGACTGGATCCGGTACCGAGGAGATCTGCC
 GCC**CGGATCGCC**

ATGGGATTA AAAAAGATGAAAGGGTTATCTTATGATGAGGCTTTTGTATGGCTAATGATCCCTTGAAG
 GCTTCCATGAAGTAAACCTTGCTTCACCTACTTCTCCGGACCTTCTGGTGTGATGAATCAGGAACTCA
 AGAGCAGACTACCTACCAAGTGCATCTACCGCCACACCCCTCAGCTTTATCCTCTGTACCTATCCAG
 GCAAAATGCATTAGATGTTTCTGAACTTCTACACAACCCGTGATTTCATCCCCAGACGTTTAAATTGTG
 CGGAAATATCTAGTATCAGCTTTCATGTTACAGACCCAGCCCTTGCTCTACCTCTGGAGTCACAGCTGG
 ATTAATAAATTAACAAGAAAGGACAATAATGCAGAGAGAGAGTTTTTACAGGGTGCTACTATA
 ACAGAGGCTTGCATGCGAGTATGATATTTTTGGGTTGAGTACTGATAGTCTGTCTCGTTTACGAAGCC
 CATCTGTTTTGGAAGTTAGAGAAAAGGGCTATGAACGATTAAGAAGAAGCTCGAAAAGCTCAGAGGGA
 ACTGAAGTTAAAAGATGAAGAATGTGAGAGGCTTCAAAGTGCAGATCAACTTGGACAGGAATTGGAA
 GAACTCACAGCTAGTCTATTTGAGGAAGCTCATAAAATGGTGAGAGAAGCAAATATCAAGCAGGCAACAG
 CAGAAAAACAGCTAAAAGAAGCACAAGGAAAAATTGATGTAAGCTCAAGCTGAAGTAGCTGCATTGAAGAC
 ACTTGTATTGTCCAGTCTCCAACATCACCTACGCAGGAGCCTTTGCCAGGTGGAAGACACCTTTTAA
 AAGGGGCATACAAGAAATAAAAGCACAAGCAGTGTATGAGTGGCAGTCAATCAGGACCTCAGTGTGATAC
 AGCCAATTGTAAGAACTGCAAAGAGGCTGACTTATCCTTGTATAATGAATCCGATTGTGGAAGGATGA
 GCCACAATGGACAGGACGTGTCCTTCTTAGACAAAACTACCAGGAAGATATCTTCCATGTTTAAACA
 TTCTCAAAAAGTGAGTTGGCTTTCAGCTGTTCTGGAGGCTGTGAAAACAATACTTAAGCATTGAACCAG
 TGGGATTACAACCTATCCGTTTGTGAAAGCTTCTGCAGTTGAATGCGGAGGACAAAAAATGTGCTCT
 CACTGGCCAGAGTAAGTCTGTAAACACAGAATTAATTAAGGGACTCAAGCAACTATTATTATATTCT
 CCTTTTTGCAGATACAGGATCACTTCTGTATGTAAGTTTTTTACATACATTTCGATACATTACAGCAGGAC
 TCGTGAACAGCAGGATGTTGATCAGATGTTTTGGGAGGTTATGCAGTTGAGAAAAGAGATGTCATTGGC
 AAAGCTGGGTTATTTCAAAGAGGAACTC

ACGCGTACGCGGCCGCTCGAGCAGAACTCATCTCAGAAGAGGATCTGGCAGCAAATGATATCCTGGATT
 ACAAGGATGACGACGATAAGGTTTAA

Protein Sequence:

>RC218204 representing NM_175623
 Red=Cloning site Green=Tags(s)

MGLKMKGLSYDEAFAMANDPLEGFHEVNLASPTSPDLLGVYESGTQEQTSPSVIYRPHPSALSSVPIQ
 ANALDVSELPTQPVYSSPRRLNCAEISSISFHVTDPA PCSTSGVTAGLTKLTKRKNYNAEREF LQGATI
 TEACDGSDDIFGLSTDSLRLRSPSVLEVREKGYERLKEELAKAQRELKLD EECERLSKVRDQLGQELE
 ELTASLFEEAHKVMREANIKQATAEKQLKEAQQKIDVLQAEVAALKTLVLS SPTSPTQEPLPGGKTPFK
 KGHTRNKSTSSAMSGSHQDLSVIQPIVKDCKEADLSLYNEFRLWKDEPTMDRTPFLDKIYQEDIFPCLT
 FSKSELASAVLEAVENNTLSIEPVGLQPIRFVKASAVECGGPKKCALTGQSKSCKHRIKLDSSNYYYIS
 PFCRYRITSVCNFFTYIRYIQQGLVKQDQVDMFWEVMQLRKEMSLAKLGYFKEEL

TRTRPLEQKLI SEEDLAANDILDYKDDDDKV

Chromatograms:

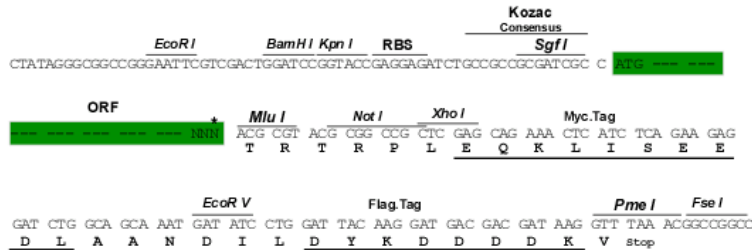
https://cdn.origene.com/chromatograms/mk8062_d11.zip

Restriction Sites:

Sgfl-MluI

Cloning Scheme:

Cloning sites used for ORF Shutting:


ACCN: NM_175623

ORF Size: 1428 bp

OTI Disclaimer: The molecular sequence of this clone aligns with the gene accession number as a point of reference only. However, individual transcript sequences of the same gene can differ through naturally occurring variations (e.g. polymorphisms), each with its own valid existence. This clone is substantially in agreement with the reference, but a complete review of all prevailing variants is recommended prior to use. [More info](#)

OTI Annotation: This clone was engineered to express the complete ORF with an expression tag. Expression varies depending on the nature of the gene.

Components: The ORF clone is ion-exchange column purified and shipped in a 2D barcoded Matrix tube containing 10ug of transfection-ready, dried plasmid DNA (reconstitute with 100 ul of water).

- Reconstitution Method:**
1. Centrifuge at 5,000xg for 5min.
 2. Carefully open the tube and add 100ul of sterile water to dissolve the DNA.
 3. Close the tube and incubate for 10 minutes at room temperature.
 4. Briefly vortex the tube and then do a quick spin (less than 5000xg) to concentrate the liquid at the bottom.
 5. Store the suspended plasmid at -20°C. The DNA is stable for at least one year from date of shipping when stored at -20°C.

RefSeq: [NM_175623.4](#)
RefSeq Size: 2147 bp

RefSeq ORF: 1431 bp

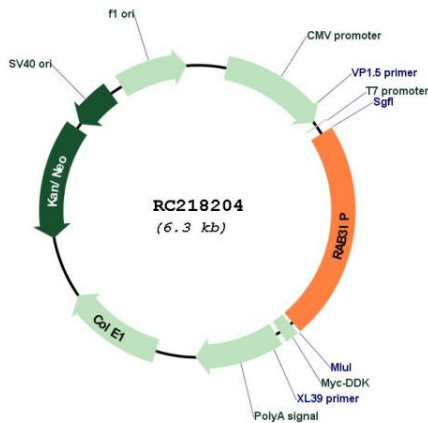
Locus ID: 117177

UniProt ID: [Q96QF0](#)
Cytogenetics: 12q15

MW: 52.8 kDa

Gene Summary: Guanine nucleotide exchange factor (GEF) which may activate RAB8A and RAB8B. Promotes the exchange of GDP to GTP, converting inactive GDP-bound Rab proteins into their active GTP-bound form. Mediates the release of GDP from RAB8A and RAB8B but not from RAB3A or RAB5. Modulates actin organization and promotes polarized transport of RAB8A-specific vesicles to the cell surface. Together with RAB11A, RAB8A, the exocyst complex, PARD3, PRKCI, ANXA2, CDC42 and DNMBP promotes transcytosis of PODXL to the apical membrane initiation sites (AMIS), apical surface formation and lumenogenesis.[UniProtKB/Swiss-Prot Function]

Product images:



Circular map for RC218204