

Product datasheet for RC218197

Nestin (NES) (NM_006617) Human Tagged ORF Clone

Product data:

Product Type:	Expression Plasmids
Product Name:	Nestin (NES) (NM_006617) Human Tagged ORF Clone
Tag:	Myc-DDK
Symbol:	Nestin
Synonyms:	Nbla00170
Mammalian Cell Selection:	Neomycin
Vector:	pCMV6-Entry (PS100001)
E. coli Selection:	Kanamycin (25 ug/mL)
ORF Nucleotide Sequence:	>RC218197 representing NM_006617 Red=Cloning site Blue=ORF Green=Tags(s)

TTTTGTAATACGACTCACTATAGGGCGGCCGGAATTCGTCGACTGGATCCGGTACCGAGGAGATCTGCC
GCC**CGATCGCC**

ATGGAGGGCTGCATGGGGGAGGAGTCGTTTCAGATGTGGGAGCTCAATCGGCGCCTGGAGGCCTACCTGG
CCCGGGTCAAGGCGCTGGAGGAGCAGAATGAGCTGCTCAGCGGGAGCTCGGGGGCTCCGGGCACAATC
CGCGGACACCTCCTGGCGGGCGCATGCCGACGACGAGCTGGCGGCCCTCGGGGCCCTCGTTGACCAACGC
TGCGGGGAGAAGCACGCGGCCGAGGTGGCGCGCACAACTGGCTGAAGAGCTGGAGGGCGTGGCAGGCC
GATGCCAGCAGCTGCGGCTGGCCGGGAGCGGACGACGGAGGAGGTAGCCCGCAACCGGCGCGCCGTCGA
GGCAGAGAAAATGCGCCCGGCCCTGGCTGAGTAGCCAGGTGGCAGAGCTGGAGCGCGAGCTAGAGGCTCTA
CGCGTGGCGCACGAGGAGGAGCGCTCGGCCCTGAACGCGCAGGCTGCCTGTGCCCCCGCTGCCCCGCGC
CGCCCCGCGGGCCTCCCGCGCCGGCCCCGAGGTAGAGGAGCTGGCAAGGCGACTGGGCGAGGCGTGGCG
CGGGGAGTGCAGCGGCTACCAGGAGCGCGTGGCACACATGGAGACGTCGCTGGGCCAGGCCCGCGAGCGG
CTGGGCCGGGCGGTGCAGGGTGGCCGCGAGGGCCGCTGGAGCTGCAGCAGCTCCAGGCTGAGCGCGGAG
GCCTCCTGGAGCGCAGGGCAGCGTTGGAACAGAGGTTGGAGGGCCGCTGGCAGGAGCGGCTGCGGGCTAC
TGAAAAGTCCAGCTGGCTGTGGAGGCCCTGGAGCAGGAGAAACAGGGCCCTACAGAGCCAGATCGCTCAG
GTCCTGGAAGGTCGGCAGCAGCTGGCGCACCTCAAGATGTCCCTCAGCCTGGAGGTGGCCACGTACAGGA
CCCTCCTGGAGGCTGAGAACTCCCGGCTGCAAACACCTGGCGGTGGCTCCAAGACTTCCCTCAGCTTTCA
GGACCCCAAGCTGGAGCTGCAATTCCCTAGGACCCAGAGGGCCGGCGTCTTGATCTTTGCTCCAGTC
CTGAGCCCAACTTCCCTCCCTCACCTTGCTGCTACCTTGAGACACCTGTGCCAGCCTTTCTTAAGA
ACCAAGAATTCTCCAGGCCCGTACCCCTACCTTGCCAGCACCCCATCCCCCAGACCTCAGGCACC
CTCTCCTGCTGTAGATGCAGAGATCAGAGCCCAGGATGCTCCTCTCTCTGCTCCAGACACAGGGTGGG
AGGAAACAGGCTCCAGAGCCCTGCGGGTGAAGCCAGGGTGGCCATTCTGCCAGCGTCTGCCTGGAC
CAGAGGAGCCTGGGGCCAGCGCAAGAGGCCAGTACAGGCCAGTCCCCAGAGGACCATGCCTCCTTGGC
ACCACCCCTCAGCCCTGACCACTCCAGTTAGAGGCTAAGGATGGAGAATCCGGTGGGTCTAGAGTGTTCC



AGCATATGCCGAGGGGAAGGTGAAGGGCAAATCTGGGGTTGGTAGAGAAAGAAACAGCCATAGAGGGCA
 AAGTGGTAAGCAGCTTGCAGCAGGAAATATGGGAAGAAGAGGATCTAACAGGAAGGAAATCCAGGACTC
 CCAGGTTCTTTGGAAAAAGAAACCTGAAGTCTCTGGGAGAGGAGATCAAGAGTCACTGAAGACTCTG
 GAAAACAGAGCCATGAGACACTAGAAAGGGAGAATCAAGAAATGTCCGAGGTCTTTAGAAGAAGACTTAG
 AAACACTAAAAAGTCTAGAAAAGGAAAAAAGAGCTATTAAGGATGTGGAGGTAGTGAGACCTCTAGA
 AAAAGAGGCTGTAGGCCAACTTAAGCCTACAGGAAAAGAGGACACACAGACATTGCAATCCCTGCAAAA
 GAGAATCAAGAACTAATGAAATCTTTGAAGTAACTAGAGACATTTTTATTTCCAGGAACGGAAAAATC
 AAGAATTAGTAAGTTCTCTGCAAGAGAACTTAGAGTCATTGACAGCTCTGGAAAAGGAGAATCAAGAGCC
 ACTGAGATCTCCAGAAGTAGGGGATGAGGAGGCACTGAGACCTCTGACAAAAGGAGAATCAGGAACCCCTG
 AGGTCTCTTGAAGATGAGAACAAAGAGGCTTTAGATCTCTAGAAAAAGAGAACCAGGAGCCACTGAAGA
 CTCTAGAAGAAGAGGACCAGAGTATTGTGAGACCTCTAGAAAACAGAGAATCACAATCACTGAGGTCTTT
 AGAAGAACAGGACCAAGAGACATTGAGAACTCTTAAAAAGAGACTCAACAGCGACGGAGGTCTTAGGG
 GAACAGGATCAGATGACATTAAGACCCCGAAAAAGTGGATCTAGAACCCTGAAGTCTCTTGACCAGG
 AGATAGCTAGACCTCTTAAAAATGAGAATCAAGAGTCTTAAAGTCACTCAAAGAAGAGAGCGTAGAGGC
 AGTAAAATCTTTAGAAACAGAGATCCTAGAATCACTGAAGTCTGCGGGACAAGAGAACCTGGAAACTG
 AAATCTCCAGAACTCAAGCACCCTGTGGACTCCAGAAGAAATAATCAGGGGGCAATGAATCCTCTAG
 AAAAGGAAATTCAGAACCCTGGAGTCTGTGGAAGTGAACCAAGAGACATTCAGACTCCTGGAAGAGGA
 GAATCAGGAATCATTGAGATCTCTGGGAGCATGGAACCTGGAGAAATTTGAGATCTCCAGAGGAGGTAGAC
 AAGGAAAGTCAAAGGAATCTGGAAGAGGAAGAGAACCTGGGAAAGGGAGAGTACCAAGAGTCACTGAGGT
 CTCTGGAGGAGGAGGGACAGGAGCTGCCGAGTCTGCAGATGTGCAGAGGTGGGAAGATACGGTGGAGAA
 GGACCAAGAACTGGCTCAGGAAAGCCCTCTGGGATGGCTGGAGTGGAAAATGAGGATGAGGCAGAGCTG
 AATCTGAGGGAGCAGGATGGCTTCACTGGGAAGGAGGAGGTGGTAGAGCAGGGAGAGCTGAATGCCACAG
 AGGAGGTCTGGATCCAGGCGAGGGGACCCAGAGAGCCCTGAGCCCAAAGAGCAGAGAGCCCTGGTTGA
 GGGAGCCAGTGTGAAGGGAGGGGCTGAGGGCTCCAGGACCTGAAGGGCAATCACAACAGGTGGGGGCC
 CCAGGCCCTCAGGCTCCCGAGGGCTGCCAGAGCGATAGAGCCCTGGTGGAAAGATGATGTGGCCCGAG
 GGGGTGACCAAGCCTCCCGAGAGGTGATGTTGGGGTCAAGCCTGCCATGGGTGAGTCTGCTGCGGGAGC
 TGAGCCAGGCCCGGGGACGGGGTGGGAGGGTGGGGGACCCAGGCCATCTGACCAGGGAAGAGGTGATG
 GAACCACCCCTGGAAGAGGAGAGTTGGAGGCAAAGAGGGTTCAGGGCTTGAAGGGCTAGAAAGGACC
 TAGAGGAGGCAGGTGGTCTGGGGACAGAGTCTCCGAGCTGCCTGGGAAGAGCAGAGACCCTTGGGAGCC
 TCCAGGGAGGGTAGGGAGGAGTCAAGGCTGAGGCCCCAGGGGAGCAGAGGAGGCTTCCCTGCTGAG
 ACCCTGGGCCCACTGGAAGTATGCCCTTACCTTGGCCTCTGGGGTCAAGGAAGCTGAGGAGGATG
 TACCACAGTGTGGTCTCCCCAGCCCAACGTACACCCCGATCCTGGAAGATGCCCTGGGCCTCAGCC
 TCAAGGCTGAAGGGAGTCAAGGAGGTAGCTGGGGGTGCAGGGGAGGGCTGAAGCCCTGGGAAAAGTAGAG
 AGCGAGCAGGAGGAGTTGGGTTCTGGGGAGATCCCGAGGGCCCCAGGAGGAAGGGGAGGAGAGCAGAG
 AAGAGAGCAGGAGGATGAGCTCGGGGAGACCCTCCAGACTCCACTCCCCTGGGCTTCTACCTCAGGTC
 CCCCACCTCCCCAGGTGGGACCCCACTGGAGAGCAGAGGCCACCCCTCAAGGGGAGACTGGAAGGAG
 GGCTGGGATCTGCTGTCTGGCTTCCGAGGGCCTTGAAGCCCCACCTCAGAAAAGGAGGAGGGGGAGG
 AGGGAGAAGAGGAGTGTGGCCGTGACTGACCTGTGAGAAGAAATTTGAGGACCTGGGACTGAGGCACC
 TTTTCTTCTGGGGTCCCTGGGAGGTGGCAGAACCTCTGGGCCAGGTGCCCCAGCTGCTACTGGATCCT
 GCAGCCTGGGATCGAGATGGGGAGTCCGATGGGTTTGCAGATGAGGAAGAAAGTGGGGAGGAGGGAGAGG
 AGGATCAGGAGGAGGGGAGGAGCCAGGGCTGGGCGGTGGGGGCCAGGGTCTTCTGTTGACAGCTCCA
 GGCCCTGAGTAGCTCCAGAGAGGGGAATTCCTGGAGTCTGATTCTGTAGTGTCACTGCTCCCTGGGAT
 GACAGCTTGAAGGGTGCAGTGGTGGTCCCCAAGACTGCCCTGGAAACGGAGTCCCAGGACAGTGTG
 AGCCTTCTGGCTCAGAGGAAGAGTCTGACCCTGTTTCTTGGAGAGGGAGGACAAAGTCCCTGGCCCTCT
 AGAGATCCCCAGTGGGATGGAGGATGCAGGCCAGGGGACAGACATCATTGGTGTAAATGGCCAGGGTCCC
 AACTTGGAGGGGAAGTACAGCATGTGAATGGGGAGTGTGAACGGGCTGGAGCAGTCTGAGGAAGTGG
 GGCAAGGAATGCCGCTAGTCTCTGAGGGAGACCGAGGGAGCCCTTTAGGAGGAGGAGGGGAGTGTCTCT
 GAAGACCTCTGGGACAGGGGCTCCTGTTACCTGGGCCAGGGTCAAGTCTTGAAGTCACTCAGAGGGAA
 GGAGATAGAGAGTCTGTCTCCTCAGGGGAGGAC

AGCGGACCGACGCGTACGCGGCCGCTCGAGCAGAAAATCATCTCAGAAGAGGATCTGGCAGCAAATGATATCC
 TGGATTACAAGGATGACGACGATAAGGTTTAA

Protein Sequence: >RC218197 representing NM_006617
 Red=Cloning site Green=Tags(s)

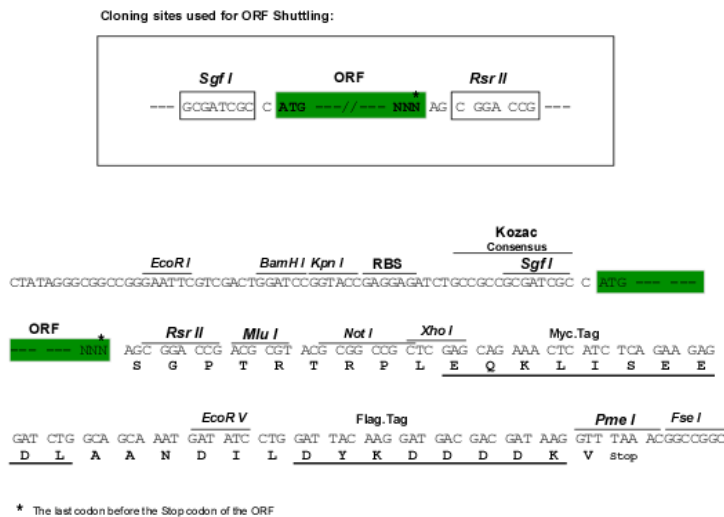
MEGCMGEESFQMWELNRRLEAYLARVKALEEQNELL SAELGGLRAQSADTSWRAHADDELAALRALVDQR
 WREKHAAEVARDNLAEELEGVAGRCQQLRLARERTTEEVARNRRAVEAEKCARAWLSSQVAELERELEAL
 RVAHEEERVGLNAQAACAPRCPAPPRGPPAPAPEVEELARRLGEAWRGAVRGYQERVAHMETSLGQARER
 LGRAVQGAREGRLELQQLQAERGGLLERRAALEQRLEGRWQERLRATEKFQLAVEALEQEKQGLQSQIAQ
 VLEGRQQLAHLKMSLSLEVATYRTLLEAENSRLQTPGGGSKTSLSFQDPKLELQFPRTPGRRRLGSLLPV
 LSPTSLPSPLPATLETPVPAFLKNQEFQARTPLASTPIPPTQAPSPAVIDAEIRAQDAPLSLLQTQGG
 RKQAPEPLRAEARVAIPASVLPGPPEEGGQRQEASTGQSPEDHASLAPPLSPDHSSLEAKDGESGGSRVF
 SICRGEQEQIWLVEKETAIEGKVVSSLQQEIWEEEDLNRKEIQDSQVPLEKETLKSLGEEIQESLKT
 ENQSHETLERENQEQPRSEEDLETLSLEKENKELLKDVEVVRPLEKEAVGQLKPTGKEDTQTLQSLQK
 ENQELMKSLEGNLETFLPGTENQELVSSLQENLESLTALEKENQEPLRSPEVGDDEALRPLTKENQEPL
 RSLEDENKEAFRSLEKENQEPLKLEEDQSIVRPLETENHKSLSLEEQQDET LRTLEKETQRRRSLG
 EQDQMTLRPPEKVDLEPLKSLDQEIARPLENENQEFKSLKEESVEAVKSLETEILESLKSAGQENLETL
 KSPETQAPLWTPPEINQGAMNPLEKEIQEPLSEVEVNQETFRLLLEENQESLRSLGAWNLENLRSPPEVD
 KESQRNLEEEENLGKGEYQESLRSLEEEGQELPQSADVQRWEDTVEKDQELAQESPPGMAGVENDEAEAL
 NLRQDGFTEGKEEVVEQGELNATEEVWIPGEGHPESPEPKEQRGLVEGASVKGGAEGLQDPEGQSQQVGA
 PGLQAPQGLPEAIEPLVEDDVAPGGDQASPEVMLGSEPAMGESAAGAEPGGQGVGGLGDPGHLTREEVM
 EPPLSEESLEAKRVQGLEGRPKDLEEAGGLGTEFSELPGKSRDPWEPPREGREESEAEAPRGAEAEFFPAE
 TLGHTGSDAPSPWPLGSEEAEDVPPVLVSPSPTYTPILEDAPGPQPQAEQSQAESWGVQGRAEALGKVE
 SEQEELGSGEIEPEGPQEEGEEESREESEDELGETLPDSTPLGFYLRSPSPRWDPTGEQRPPPQGETGKE
 GWDPAVLASEGLEAPPSEKEEGEEGEEECGRDSDLSEEFEDLGTAPFLPGVPGVEAEPLGQVPQLLLDP
 AAWDRDGE SDGFADSEESGEEGEEEDQEEGREPGAGRWP GSSVGS LQALSSSRGEFLESDSVSVSVPWD
 DSLRGAVAGAPKTALETESQDSAEPGSGSEESDPVSLEREDKVPGLIIPSGMEDAGPGADIIGVNGQGP
 NLEKGSQHVNGGVMNGLEQSEEVGQGMPLVSEGDGRSPFQEEEGSALKTSWAGAPVHLGQQGFLKFTQRE
 GDRESWSSGED

SGP TRRRLEQKLI SEEDLAANDILDYKDDDDKV

Chromatograms: https://cdn.origene.com/chromatograms/mk8016_b02.zip

Restriction Sites: SgfI-RsrII

Cloning Scheme:



ACCN: NM_006617

ORF Size: 4863 bp

OTI Disclaimer: The molecular sequence of this clone aligns with the gene accession number as a point of reference only. However, individual transcript sequences of the same gene can differ through naturally occurring variations (e.g. polymorphisms), each with its own valid existence. This clone is substantially in agreement with the reference, but a complete review of all prevailing variants is recommended prior to use. [More info](#)

OTI Annotation: This clone was engineered to express the complete ORF with an expression tag. Expression varies depending on the nature of the gene.

Components: The ORF clone is ion-exchange column purified and shipped in a 2D barcoded Matrix tube containing 10ug of transfection-ready, dried plasmid DNA (reconstitute with 100 ul of water).

Reconstitution Method:

1. Centrifuge at 5,000xg for 5min.
2. Carefully open the tube and add 100ul of sterile water to dissolve the DNA.
3. Close the tube and incubate for 10 minutes at room temperature.
4. Briefly vortex the tube and then do a quick spin (less than 5000xg) to concentrate the liquid at the bottom.
5. Store the suspended plasmid at -20°C. The DNA is stable for at least one year from date of shipping when stored at -20°C.

RefSeq: [NM_006617.2](#)

RefSeq Size: 5591 bp

RefSeq ORF: 4866 bp

Locus ID: 10763

UniProt ID: [P48681](#)

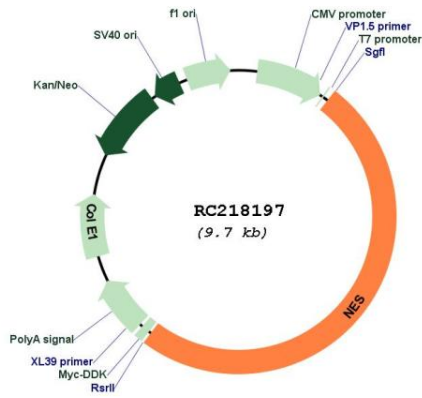
Cytogenetics: 1q23.1

Protein Families: ES Cell Differentiation/IPS

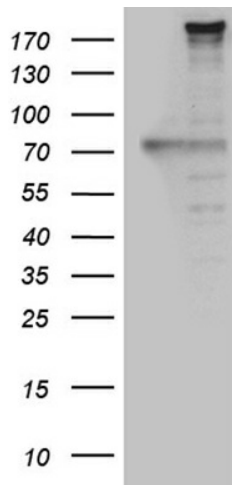
MW: 177.3 kDa

Gene Summary: This gene encodes a member of the intermediate filament protein family and is expressed primarily in nerve cells. [provided by RefSeq, Sep 2011]

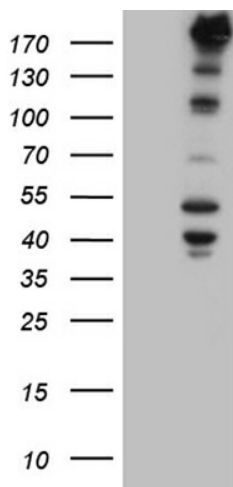
Product images:



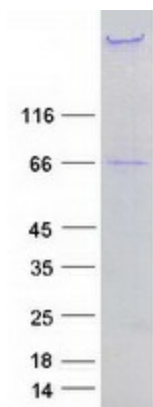
Circular map for RC218197



HEK293T cells were transfected with the pCMV6-ENTRY control (Left lane) or pCMV6-ENTRY NES (RC218197, Right lane) cDNA for 48 hrs and lysed. Equivalent amounts of cell lysates (5 ug per lane) were separated by SDS-PAGE and immunoblotted with anti-NES (1:500).



HEK293T cells were transfected with the pCMV6-ENTRY control (Cat# [PS100001], Left lane) or pCMV6-ENTRY NES (Cat# RC218197, Right lane) cDNA for 48 hrs and lysed. Equivalent amounts of cell lysates (5 ug per lane) were separated by SDS-PAGE and immunoblotted with anti-NES (Cat# [TA809210])(1:2000).



Coomassie blue staining of purified NES protein (Cat# [TP318197]). The protein was produced from HEK293T cells transfected with NES cDNA clone (Cat# RC218197) using MegaTran 2.0 (Cat# [TT210002]).