

## Product datasheet for RC218191

### Heterogeneous Nuclear Ribonucleoprotein (A1 like) (HNRNPA1L2) (NM\_001011724) Human Tagged ORF Clone

#### Product data:

Product Type:	Expression Plasmids
Product Name:	Heterogeneous Nuclear Ribonucleoprotein (A1 like) (HNRNPA1L2) (NM_001011724) Human Tagged ORF Clone
Tag:	Myc-DDK
Symbol:	Heterogeneous Nuclear Ribonucleoprotein (A1 like)
Mammalian Cell Selection:	Neomycin
Vector:	pCMV6-Entry (PS100001)
E. coli Selection:	Kanamycin (25 ug/mL)
ORF Nucleotide Sequence:	>RC218191 ORF sequence Red=Cloning site Blue=ORF Green=Tags(s)

TTTTGTAATACGACTCACTATAGGGCGGCCGGAATTCGTCGACTGGATCCGGTACCGAGGAGATCTGCC  
GCC**CGATCGCC**

ATGTCTAAGTCAGCGTCTCCAAAAGAGCCCGAACAGCTGAGGAAGCTCTTCATTGGAGGGTTGAGCTTTG  
AAACAACCTGATGAGAGCCTGAGGAGCCATTTTGGCAATGGGGAACGCTCACAGACTGTGTGTAATGAG  
AGATCCAAACACCAAGCGCTCCAGGGGCTTTGGGTTTGTACATATGCCACTGTGGAGGAGGTGGATGCA  
GCTATGAATACAACGCCACACAAGGTGGATGGAAGAGTTGTGGAACCAAAGAGAGCTGTCTCCAGAGAAG  
ATTCTCAAAGACCAGGTGCCCACTTAACGTGAAAAAGATATTTGTTGGTGGCATTAAAGAAGACTGA  
AGAACATCACCTAAGAGATTATTTGAACAGTATGGAAAAATTGAAGTAATTGAAATCATGACTGACCGA  
GGCAGTGGCAAGAAAAGGGGCTTTGCCCTTTGTAACCTTTGACGACCATGACTCCGTGGATAAGATTGTCA  
TTCAGAAATACCACTACTGTGAAGGGCCACAACCTGTGAAGTTAGAAAAGCCCTGCCAAAGCAAGAGATGGC  
TAGTGCTTCATCCAGCCAAAGAGGTGGAAGGGTCTGGAACCTTTGGTGGTGGCTTTGGTGGCAGCTGTGGT  
GGTGGGAATGACAACCTTTGGTCTGGAGGAACTTCAGTGGTCTGGTGGCTTTGGTGGCAGCTGTGGT  
GTGGTGGATGGTGGCAGTGGGATGGCTATAATGGATTTGGTAATGATGGAAGCAATTTGGAGGTGG  
TGAAGCTACAATGATTTTGGCAATACAACAATCAGTCTTCAAATTTTGGACCCATGAAGGGAGGAAAT  
TTTGGAGGCAGAAGCTCTGGCCCTGTGGCGGTGGAGGCCAATACTTTGCAAACCACAAAACCAAGGTG  
GCTATGGCGTTTCCAGCAGCAGCAGTAGCTATGGCAGTGGCAGAAGATTT

**ACGCGT**ACGCGGCCGCTCGAGCAGAAACTCATCTCAGAAGAGGATCTGGCAGCAATGATATCCTGGATT  
ACAAGGATGACGACGATAAGGTTTAA



[View online »](#)

**Protein Sequence:** >RC218191 protein sequence  
Red=Cloning site Green=Tags(s)

MSKSASPKEPEQLRKLFIGGLSFETTDESLRSHFEQWGLTDCVVMRDPNPKRSRGGFVITYATVEEVDA  
 AMNTTPHKVDGRVVEPKRAVSREDSQRPGAHLTVKKIFVGGIKEDTEEHHLRDYFEQYKIEVIEIMTDR  
 GSGKKRGFAFVTFDDHDSVDKIVIQKYHTVKGHNCEVRKALPKQEMASASSSQRRRSGSNFGGGRGDGF  
 GGNDNFGRGGNFSGRGGFGGSCGGGGYGGSGDGYNGFGNDGSNFGGGGSYNDFGNYNQSSNFGPMKGGN  
 FGGRSSGPCGGGGQYFAKPNQGGYGVSSSSSYGSGRRF

TRTRPLEQKLISEEDLAANDILDYKDDDDKV

**Chromatograms:** [https://cdn.origene.com/chromatograms/mk6456\\_f03.zip](https://cdn.origene.com/chromatograms/mk6456_f03.zip)

**Restriction Sites:** SgfI-MluI

**Cloning Scheme:**

Cloning sites used for ORF Shuttling:



\* The last codon before the Stop codon of the ORF

**ACCN:** NM\_001011724

**ORF Size:** 960 bp

**OTI Disclaimer:** The molecular sequence of this clone aligns with the gene accession number as a point of reference only. However, individual transcript sequences of the same gene can differ through naturally occurring variations (e.g. polymorphisms), each with its own valid existence. This clone is substantially in agreement with the reference, but a complete review of all prevailing variants is recommended prior to use. [More info](#)

**OTI Annotation:** This clone was engineered to express the complete ORF with an expression tag. Expression varies depending on the nature of the gene.

**Components:** The ORF clone is ion-exchange column purified and shipped in a 2D barcoded Matrix tube containing 10ug of transfection-ready, dried plasmid DNA (reconstitute with 100 ul of water).

**Reconstitution Method:**

1. Centrifuge at 5,000xg for 5min.
2. Carefully open the tube and add 100ul of sterile water to dissolve the DNA.
3. Close the tube and incubate for 10 minutes at room temperature.
4. Briefly vortex the tube and then do a quick spin (less than 5000xg) to concentrate the liquid at the bottom.
5. Store the suspended plasmid at -20°C. The DNA is stable for at least one year from date of shipping when stored at -20°C.

**RefSeq:** [NM\\_001011724.1](#), [NP\\_001011724.1](#)

**RefSeq Size:** 2365 bp

**RefSeq ORF:** 963 bp

**Locus ID:** 144983

**UniProt ID:** [Q32P51](#)

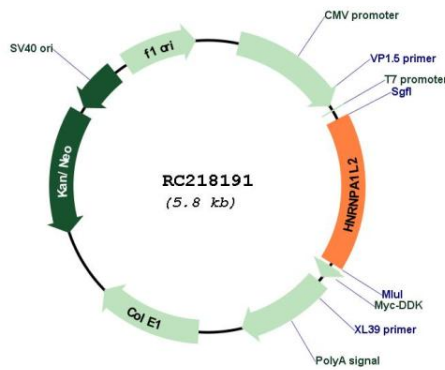
**Cytogenetics:** 13q14.3

**Protein Pathways:** Spliceosome

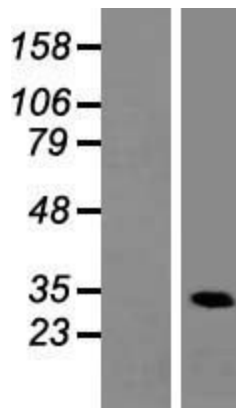
**MW:** 34.2 kDa

**Gene Summary:** Involved in the packaging of pre-mRNA into hnRNP particles, transport of poly(A) mRNA from the nucleus to the cytoplasm and may modulate splice site selection.[UniProtKB/Swiss-Prot Function]

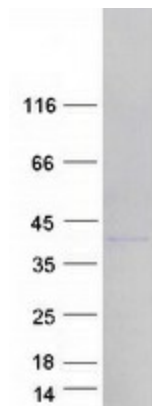
**Product images:**



Circular map for RC218191



Western blot validation of overexpression lysate (Cat# [LY423306]) using anti-DDK antibody (Cat# [TA50011-100]). Left: Cell lysates from untransfected HEK293T cells; Right: Cell lysates from HEK293T cells transfected with [RC223427] using transfection reagent MegaTran 2.0 (Cat# [TT210002]).



Coomassie blue staining of purified HNRNPA1L2 protein (Cat# [TP318191]). The protein was produced from HEK293T cells transfected with HNRNPA1L2 cDNA clone (Cat# RC218191) using MegaTran 2.0 (Cat# [TT210002]).