

Product datasheet for RC218190

BTBD7 (NM_018167) Human Tagged ORF Clone

Product data:

Product Type:	Expression Plasmids
Product Name:	BTBD7 (NM_018167) Human Tagged ORF Clone
Tag:	Myc-DDK
Symbol:	BTBD7
Synonyms:	FUP1
Mammalian Cell Selection:	Neomycin
Vector:	pCMV6-Entry (PS100001)
E. coli Selection:	Kanamycin (25 ug/mL)
ORF Nucleotide Sequence:	>RC218190 representing NM_018167 Red=Cloning site Blue=ORF Green=Tags(s)

TTTTGTAATACGACTCACTATAGGGCGGCCGGAATTCGTCGACTGGATCCGGTACCGAGGAGATCTGCC
GCC**CGATCGCC**

ATGGGTGCTAATGCATCTAATTATCCTCATTCATGTTCCCGAGGGTAGGGGAAATTCACAGGCCCAAC
AGACTTTTATAGGGACCTCATCTATTCTCAGCAAGGCTATGGTTGCGAATCAAAGTTGTATAGCCTTGA
CCATGGCCATGAGAAACCACAAGACAAAAAAGAGAACCTCTGGTCTTGCCACCCTCAAAAAGAAGTTT
ATTAAGCGTCGGAAATCTAATAGGTCTGCCGATCATGCCAAGCAGATGCGAGAATCCTCTCTGGGTGGG
ATGTTAGAGATGTCAATGCATTAGTGGAGGAATATGAGGGAACATCAGCATTAAAGGAGCTTCTCTACA
AGCCAGTTTGGCTAGACCAGAAGCCCGGACATTGCAGAAAGATATGGCTGATCTTTATGAGTACAAGTAT
TGTAAGTGTAGACTTAATATTTCAAGAACTTGTTTTCTGTTTCATCGTGCCATTTTGGCAGCAAGGT
GTCCATTTTTTAAACACTGCTTCTTCTCACCAGAGTATGGGGCAGAGATAATAATGGACATCAATAC
AGCTGGTATTGATATGCCCATGTTTTCTGCTTGTACTACCTTTATACAGGAGAGTTTGAATGGAG
GACTCAAGGTTTCAAATGTCGATATCCTTGTTCAGCTTAGTGAAGAATTTGGAACCAAAATCCCTTG
ATGTAGATATGCGTGGACTCTTTGATTACATGTGTTATTATGATGTCGTCCTTAGTTTTCTTCAGACT
TGAAGTGGTTGAAGCTTTTGGTGGAAATCAGAAGTGTAGATGAAGAGCTCAAAGCCACAAGGCTGTT
ATTTCTGCACGGTCCCCATTTTTCGAAATTTATTACAAAGGAGGATACGAACTGGTGAAGAAATCACAG
ACCGAACTTTGAGGACTCCCAAGAATTATATTAGATGAGTCCATTATACCAAAAAAATATGCAACAGT
GATATTACACTGTATGTATACCGACGTGGTGGACCTCTGTTTTGCACTGTAGCCCTCTGTGGGGAGT
CTCAGTGAAGTTCAGGCTCTCGTCGAGGGAAGCCAAACATGACCAGGGCAGAAGAAGCCATGGAACCTT
ACCACATAGCACTGTTCTTGAATTTAACATGCTTGCACAAGAGGAGACTACAGTCATCAGGCTGCCTG
TGCAGCAGAGCTTTCAAACAGCTGCTTACTGCCTCAATCT

ACGCGTACGCGGCCGCTCGAGCAGAACTCATCTCAGAAGAGGATCTGGCAGCAAATGATATCCTGGATT
ACAAGGATGACGACGATAAGGTTTAA



[View online >](#)

Protein Sequence: >RC218190 representing NM_018167
Red=Cloning site Green=Tags(s)

MGANASNYPHSCSPRVGGNSQAQQTFIGTSSYSQQGYGCEKLYSLDHGHEKPQDKKRTSGLATLKKKF
 IKRRKSNRSADHAKQMRELLSGWDVRDVNALVEEYEGTSALKELSLQASLARPEARLQKDMADLYEYKY
 CTDVDLIFQETCFPVHRAILAARCPFFKTLSSSPEYGAEIIMDINTAGIDMPMF SALLHYLYTGEFGME
 DSRFQNV DILVQLSEEFGTPNSLDVDMRGLFDYMCYYDVVLSFSSDSELVEAFGGNQCLDEELKAHKAV
 ISARSPFFRNLLQRRIRTGEEITDRTLRTPTRIILDESIIPKKYATVILHMYTDVVDLSVLHCSPSVGS
 LSEVQALVAGKPNMTRAEEMELYHIALFLEFNMLAQEETTVIRPACAAELSNSCLLPQS

TRTRPLEQKLISEEDLAANDILDYKDDDDKV

Chromatograms: https://cdn.origene.com/chromatograms/mk6503_d09.zip

Restriction Sites: SgfI-MluI

Cloning Scheme:



ACCN: NM_018167

ORF Size: 1230 bp

OTI Disclaimer: The molecular sequence of this clone aligns with the gene accession number as a point of reference only. However, individual transcript sequences of the same gene can differ through naturally occurring variations (e.g. polymorphisms), each with its own valid existence. This clone is substantially in agreement with the reference, but a complete review of all prevailing variants is recommended prior to use. [More info](#)

OTI Annotation: This clone was engineered to express the complete ORF with an expression tag. Expression varies depending on the nature of the gene.

Components: The ORF clone is ion-exchange column purified and shipped in a 2D barcoded Matrix tube containing 10ug of transfection-ready, dried plasmid DNA (reconstitute with 100 ul of water).

Reconstitution Method:

1. Centrifuge at 5,000xg for 5min.
2. Carefully open the tube and add 100ul of sterile water to dissolve the DNA.
3. Close the tube and incubate for 10 minutes at room temperature.
4. Briefly vortex the tube and then do a quick spin (less than 5000xg) to concentrate the liquid at the bottom.
5. Store the suspended plasmid at -20°C. The DNA is stable for at least one year from date of shipping when stored at -20°C.

RefSeq: [NM_018167.5](#)

RefSeq Size: 2568 bp

RefSeq ORF: 1233 bp

Locus ID: 55727

UniProt ID: [Q9P203](#)

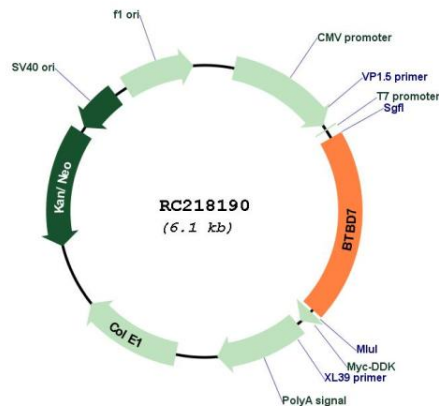
Cytogenetics: 14q32.12

Domains: BTB

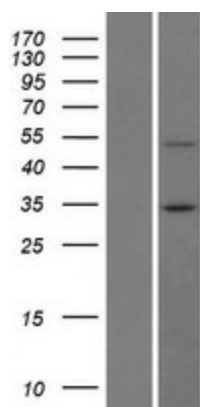
MW: 45.9 kDa

Gene Summary: Acts as a mediator of epithelial dynamics and organ branching by promoting cleft progression. Induced following accumulation of fibronectin in forming clefts, leading to local expression of the cell-scattering SNAIL2 and suppression of E-cadherin levels, thereby altering cell morphology and reducing cell-cell adhesion. This stimulates cell separation at the base of forming clefts by local, dynamic intercellular gap formation and promotes cleft progression (By similarity).[UniProtKB/Swiss-Prot Function]

Product images:



Circular map for RC218190



Western blot validation of overexpression lysate (Cat# [LY413264]) using anti-DDK antibody (Cat# [TA50011-100]). Left: Cell lysates from untransfected HEK293T cells; Right: Cell lysates from HEK293T cells transfected with RC218190 using transfection reagent MegaTran 2.0 (Cat# [TT210002]).