

Product datasheet for **RC218189**

STAG3 (NM_012447) Human Tagged ORF Clone

Product data:

Product Type:	Expression Plasmids
Product Name:	STAG3 (NM_012447) Human Tagged ORF Clone
Tag:	Myc-DDK
Symbol:	STAG3
Mammalian Cell Selection:	Neomycin
Vector:	pCMV6-Entry (PS100001)
E. coli Selection:	Kanamycin (25 ug/mL)
ORF Nucleotide Sequence:	>RC218189 representing NM_012447 Red=Cloning site Blue=ORF Green=Tags(s)

TTTTGTAATACGACTCACTATAGGGCGGCCGGAATTCGTCGACTGGATCCGGTACCGAGGAGATCTGCC
GCC**CGATCGCC**

ATGTCTTCCCGTTGCAAAGAGCTGTGGGAGATACCAAGAGGGCCTTGTCTGCATCTTCTAGTTCCTCTG
CCAGTCTACCCTTTGTGACAGGGACTCAAACCATACCTCAGAGGGGAATGGCGACTCTTTGTTAGTCTGA
TGAAGACTGACTTTGAAGACAGCTTGAATCGCAATGTGAAGAAGAGAGCAGCAAAACGACCACCGAAA
ACAACACCGGTGGCAAACATCCAAAGAAAGGGTCCCGAGTGGTACATCGTCATAGCCGAAACAGTCTAG
AGCCACCAAGCAATGATCTTTTCAATGCTGTGAAAGCCGCAAAAGTGACATGCAGTCTTTGGTAGATGA
GTGGCTGGATAGCTACAAGCAAGACCAGGATGCAGGATTTCTGGAGCTTGTTAACTTTTTCAATCAATCT
TGCGGATGTAAGGCATTGTGACCCCTGAGATGTTCAAGAAGATGTCCAACCTCAGAGATCATCCAGCACC
TAACAGAGCAGTTAATGAGGACTCGGGGGACTACCCTCTCATAGCTCCAGGTCCATCCTGGAAGAAGTT
CCAGGGCAGCTTCTGTGAATTTGTGAGGACATTGGTCTGTGAGTCCAGTACAGCCTCCTCATGATGGC
TTCCCTATGGACGACCTCATCTCCCTGCTCACTGGCCTCTCAGACTCACAAGTCCGCGCCTTCCGTCACA
CTAGCACCCTGGCTGCTATGAACTGATGACCTCCCTGGTAAAAGTTGCCCTCCAACCTGAGTGTGCACCA
AGATAACAATCAGCGTCAGTATGAGGCTGAAAGAAACAAGGGGCCAGGGCAGAGGGCACCTGAGCGGCTG
GAGAGCCTGTTGGAGAAACGCAAAGAGCTCCAAGAGCATCAAGAGGAGATTGAGGGGATGATGAATGCC
TCTTCAGGGGTGTCTTTGTTTCATCGGTACAGGGATGTCCTTCTGAGATCCGTGCTATCTGCATTGAGGA
AATTGGGTGTTGGATGCAAAGCTACAGCAGCTTTTCCCTACCGCAGCTATTTAAAATATATTGTTGG
ACTCTGCATGATAAGCACCGAGAAGTCCGCTGAAGTGTGTGAAGGCCCTGAAAGGGCTGTACGGTAACC
GGGACCTGACCACACGCCTGGAGCTTCCAGCAGCGCTTCAAGGACCGGATGGTTTCCATGGTCATGGA
CAGAGAGTATGATGTGGCAGTGGAGGCTGTGAGTACTGATACTTATCCTTAAGAACATGGAAGGGGTG
CTGACGGACGCGGATTGTGAGAGCGTCTACCCAGTTGTGTATGCCTCTCATCGAGGCCTGGCCTCTGCC
CAGGCGAATTTCTGTACTGAAACTCTTCTACCCTGAGTGCAGAGATAAGAATGATGGGTGGAAGAGAGCA
ACGCCAGAGCCCAGGCGCCAGAGGACTTCTTCCAGCTTCTGCTGCTCTTTTGTGGAGAGCGAGCTC
CATGACCAGCTGCTTACTTAGTAGACAGTCTGTGGGACTGTGCAGGGGCTCGGCTGAAGGACTGGGAGG
GTCTGACAAGCCTGCTGCTGGAGAAGGACCAGAACCTGGGTGATGTGCAGGAGAGCACACTGATAGAAAT



[View online »](#)

CCTTGTGTCCAGTGCCCCGCAAGCTTCAGAGGGGCACCCGCTGTGGGCCGGGTCACTGGGAGGAAGGGC
TTAACCTCTAAGGAGCGCAAGACCCAAGCCGATGACAGGGTGAAGTTGACTGAGCACCTCATCCCCCTGC
TGCCCCAGCTCCTGGCCAAGTTCTCAGCTGATGCAGAGAAGGTCACTCCCCTGCTCCAGCTTCTCAGCTG
CTTTGACCTCCACATCTACTGCACTGGGCGCTTGGAGAAGCACCTGGAGCTGTTCTGCAGCAACTCCAG
GAGGTGGTGGTGAAGCATGCAGAGCCAGCGGTGCTTGAGGCTGGGCGCATGCCCTCTACCTGCTGTGA
ATCCCCAATTCACCTTTCTCAGCCGGCGGACTTTGCCCGCAGCCAGCTAGTAGATTGCTGACTGACCC
CTTCCAGCAGGAGCTTGAAGAGCTGTTACAGTCGTCTTCTAGATGAGGATGAGGTATATAATCTGGCA
GCCACTGTAAACGCCTCTCTGCCTTCTACAACACTCATGACCTGACTCGCTGGGAGCTCTATGAGCCAT
GTTGCCAACTCCTGCAGAAGGCTGTGGACACAGGAGAGGTTCTCACCAGGTTATCCTGCCAGCCTTGAC
TCTTGTCTATTTTTCCATTCTCTGGACACTAACCCACATTTCTAAATCAGATGCTTCCAGAAGCAGCTG
TCGAGTTTGAGGGACAGAATGGTGGCCTTCTGTGAACTCTGCCAGAGTTGCCTCTCAGATGTGGATACTG
AGATCCAGGAGCAGGCTTTTGTCTTATTAAGTGATCTACTTCTCATCTTTAGCCCTCAGATGATTGTTGG
GGGCCGTGATTTCTTAGGCCACTGTCTTTTTCTGAAGCTACTCTCCAGTCTGAGCTAGCCAGCTTC
CTCATGGACCACGTCTTCATCCAGCCGGGAGACCTGGGCAGTGGTATTCCAGGAGGATCATTTACAGA
TAGAGCGCTACACCAGCGCGCCGCTCTAGCCGGTTCTGCAAGCTGTTGCTTTATGGGGTGTGGGA
GATGGATGCAGCCTCAGATGTTTTCAAACACTACAACAAGTTCTACAATGACTATGGTGACATTATCAAG
GAAACATTAAGTAGCAAGGCAGATTGACCGAAGTCATTGTTCCCGAATCCTGTGCTGAGCCTCAAGC
AGCTGTACACAGAAGTCTGCAGGAGCATGGGCCCCAGGGCCTGAATGAGCTTCTGCCTTCATCGAGAT
GAGGGACTGGCCCGGAGGTTTGCCTTGAGTTTGGACCCAGCAGCTGCAGAACCGTGACCTCGTGGTC
ATGCTACACAAGGAAGGCATCCAGTTCTCCTTGCTGAGCTTCTCCAGCTGGCTCCTCCAATCAGCCTC
CAAATCTGGCATTCTGGAGCTCCTTTCAGAGTTTTCCCCCGACTCTTCCATCAGGACAAGCAGCTTTT
ACTGTCTATCTAGAAAAGTGCCTGCAGCATGTCTCCAGGCACCTGGCCATCCCTGGGGCCAGTCACC
ACCTACTGCCACTCCCTCAGCCCTGTGGAGAACACAGCAGAGACCAGCCCTCAGGTCTCCCCAGCTCCA
AGAGGAGGCGCGTTGAAGGGCCTGCCAAGCCTAACAGAGAGGACGTCTCCTCGTCCCAGGAAGAAAGTCT
GCAGCTGAACAGCATCCCGCCACGCCCACCCTCACCTCCACAGCTGTGAAGAGCAGGCAGCCCTGTGG
GGGTTGAAAGAGATGGAGGAAGAAGATGGCTCAGAGTTGGATTTTGGCCAGGGTCAGCCCGTCGAGGCA
CCGAGAGGTCAAGGTTCTTGGGTCCACAATATTTCCAGACTCCACACAACCCTTCAGGTCTGGCCTGGG
CAACCAGCTGATGCGACTCAGCCTTATGGAAGAGGACGAGGAAGAAGAGTTAGAAATCCAGGATGAGTCA
AATGAAGAACGGCAGGATACAGACATGCAAGCAAGTAGCTACTCTCCACCAGTGAGCGCGGCTGGACC
TCTTAGATTCTACAGAGCTGGATATTGAGGATTC

ACGCGTACGCGGCGCTCGAGCAGAAACTCATCTCAGAAGAGGATCTGGCAGCAAATGATATCCTGGATT
ACAAGGATGACGACGATAAGGTTTAA

Protein Sequence: >RC218189 representing NM_012447
 Red=Cloning site Green=Tags(s)

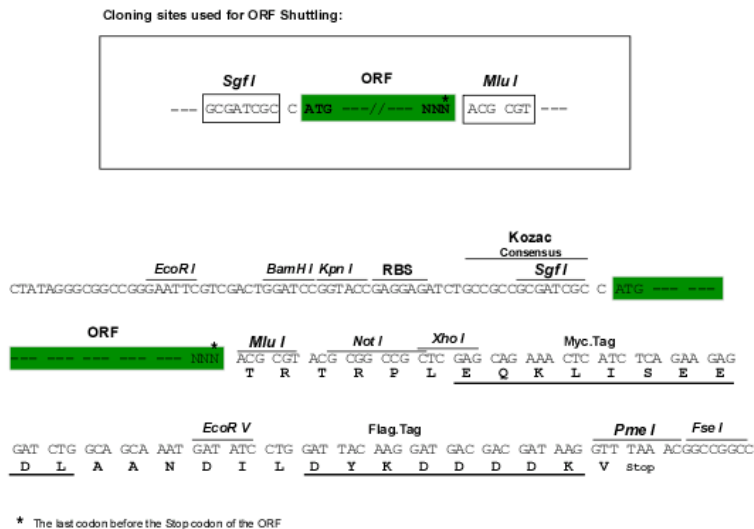
```
MSSPLQRAVGDTKRALSSSSSSASLPFDDRDSNHTSEGNGDSLDAEDTDFEDSLNRNVKKRAAKRPPK
TTPVAKHPKKGSRVVHRHSRKQSEPPANDLFNAVKAASDMQSLVDEWLDSYKQDDAGFLELVNFFIQS
CGCKGIVTPPEMFKKMSNSEIIQHLETFQNFEDSGDYPLIAPGPSWKKFQGSFCEFVRTLVCCQCYSLLYDG
FPMDDLISLLTGLSDSQVRAFRTSTLAAMKLMSTLVKVALQLSVHQDNNQRQYEAERNKGPGRAPERL
ESLLEKRKELQEHQEEIEGMMNALFRGVFVHRYRDVLPETRAICIEEIGCWMQSYSTSFLTDSYLKYIGW
TLHDKHREVRLKCVKALKGLYGNRDLTTRLELFTSRFKDRMVMVMDREYDVAVEAVRLLILILKNMEGV
LTDADCESVYPVYASHRGLASAAGEFLYWKLFYPECEIRMMGGREQRQSPGAQRTFFQLLL SFFVESEL
HDHAAYLVDLWDCAGARLKDWEGLTSLLEKQNLGDVQESTLIEILVSSARQASEGHPVGRVTGRKG
LTSKERKTQADDRVKLTEHLIPLLPQLLAKFSADAQKVTPLQLLSCFDLHIYCTGRLEKHLEFLQQLQ
EYVVKHAEPVLEAGAHALYLLCNPEFTFFSRADFARSQVLDLLTDRFQQELEELLQSSFLDEDEVYNLA
ATLKRLSAFYNTHDLTRWELYEPCCQLLQKAVDTGEVPHQVILPALTLVYFSILWTLTHISKSDASQKQL
SSLRDRMVAFCCLCQSCLSVDVTEIQEQAFVLLSLLLLIFSPQMI VGGDRFLRPLVFFPEATLQSELASF
LMDHVFIQPGDLGSGDSQEDHLQIERLHQRRRLLAGFCKLLLYGVLEMDAASDVFKHYNKFYNDYGDIIK
ETLTRARQIDRSHCSRILLLSLKQLYTELLQEHGPQGLNELPAFIEMRDLARRFALSFQPQLQNRDLVY
MLHKEGIQFSLSELPPAGSSNQPPNLAFLLELSEFSPRLFHQDKQLLSYLEKCLQHVSAQAPGHPWPVT
TYCHSLSPVENTAETSPQVLPSSKRRRVEGPAKPNREDVSSSQEESLQLNSIPPTPTLTSTAVKSRQPLW
GLKEMEEEDGSELDFAQQQPVAGTERSFLGPQYFQTPHNPSPGGLGNQLMRLSLMEEDEEELEIQDES
NEERQDTDMQASSYSSTSERGLDLLDSTELDIEDF
```

TRTRPLEQKLISEEDLAANDILDYKDDDDKV

Chromatograms: https://cdn.origene.com/chromatograms/mk8103_g10.zip

Restriction Sites: Sgfl-MluI

Cloning Scheme:

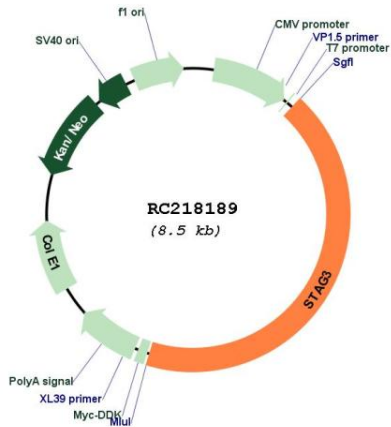


ACCN: NM_012447

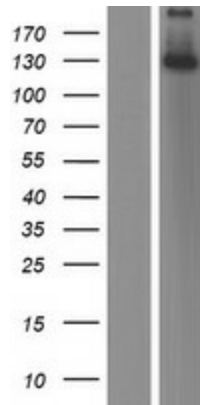
ORF Size: 3675 bp

OTI Disclaimer:	The molecular sequence of this clone aligns with the gene accession number as a point of reference only. However, individual transcript sequences of the same gene can differ through naturally occurring variations (e.g. polymorphisms), each with its own valid existence. This clone is substantially in agreement with the reference, but a complete review of all prevailing variants is recommended prior to use. More info
OTI Annotation:	This clone was engineered to express the complete ORF with an expression tag. Expression varies depending on the nature of the gene.
Components:	The ORF clone is ion-exchange column purified and shipped in a 2D barcoded Matrix tube containing 10ug of transfection-ready, dried plasmid DNA (reconstitute with 100 ul of water).
Reconstitution Method:	<ol style="list-style-type: none">1. Centrifuge at 5,000xg for 5min.2. Carefully open the tube and add 100ul of sterile water to dissolve the DNA.3. Close the tube and incubate for 10 minutes at room temperature.4. Briefly vortex the tube and then do a quick spin (less than 5000xg) to concentrate the liquid at the bottom.5. Store the suspended plasmid at -20°C. The DNA is stable for at least one year from date of shipping when stored at -20°C.
RefSeq:	NM_012447.4
RefSeq Size:	4285 bp
RefSeq ORF:	3678 bp
Locus ID:	10734
UniProt ID:	Q9UJ98
Cytogenetics:	7q22.1
Protein Pathways:	Oocyte meiosis
MW:	139 kDa
Gene Summary:	The protein encoded by this gene is expressed in the nucleus and is a subunit of the cohesin complex which regulates the cohesion of sister chromatids during cell division. A mutation in this gene is associated with premature ovarian failure. Alternate splicing results in multiple transcript variants encoding distinct isoforms. This gene has multiple pseudogenes. [provided by RefSeq, Apr 2014]

Product images:



Circular map for RC218189



Western blot validation of overexpression lysate (Cat# [LY415753]) using anti-DDK antibody (Cat# [TA50011-100]). Left: Cell lysates from untransfected HEK293T cells; Right: Cell lysates from HEK293T cells transfected with RC218189 using transfection reagent MegaTran 2.0 (Cat# [TT210002]).