

Product datasheet for RC218182

MRP1 (ABCC1) (NM_004996) Human Tagged ORF Clone

Product data:

| | |
|---------------------------|---|
| Product Type: | Expression Plasmids |
| Product Name: | MRP1 (ABCC1) (NM_004996) Human Tagged ORF Clone |
| Tag: | Myc-DDK |
| Symbol: | MRP1 |
| Synonyms: | ABC29; ABCC; DFNA77; GS-X; MRP; MRP1 |
| Mammalian Cell Selection: | Neomycin |
| Vector: | pCMV6-Entry (PS100001) |
| E. coli Selection: | Kanamycin (25 ug/mL) |
| ORF Nucleotide Sequence: | >RC218182 representing NM_004996 Red=Cloning site Blue=ORF Green=Tags(s) |

TTTTGTAATACGACTCACTATAGGGCGCCGGGAATTCGTCGACTGGATCCGGTACCGAGGAGATCTGCC
GCC**CGATCGCC**

ATGGCGCTCCGGGGCTTCTGCAGCGCCGATGGCTCCGACCCGCTCTGGGACTGGAATGTCACGTGGAATA
CCAGCAACCCCGACTTCACCAAGTGCTTTCAGAACACGGTCTCGTGTGGGTGCCTTGTTTTACCTCTG
GGCCTGTTCCCTTCTACTTCTCTATCTCTCCGACATGACCGAGGCTACATTCAGATGACACCTCTC
AACAAAACAAAAGTGCCTTGGGATTTTGTGTGGATCGTCTGCTGGCAGACCTTTCTACTCTTTCT
GGGAAAGAAGTCGGGCATATTCCTGGCCCAAGTGTTCGGTACGCCAACTCTTTGGGCATCACCAT
GCTGCTTGTACCTTTTTAATTCAGCTGGAGAGGAGGAAGGGAGTTTCAGTCTTCAGGGATCATGCTCACT
TTCTGGCTGGTAGCCCTAGTGTGTGCCCTAGCCATCCTGAGATCCAAAATTATGACAGCCTTAAAAGAGG
ATGCCAGGTGGACCTGTTTCGTGACATCACTTTCTACGTCTACTTTCCCTCTTACTCATTACAGCTCGT
CTTGTCCTGTTTCTCAGATCGCTCACCCCTGTTCTCGAAACCATCCACGACCCTAATCCCTGCCAGAG
TCCAGCGCTTCTTCTGTGAGGATCACCTTCTGGTGGATCACAGGGTTGATTGTCCGGGGCTACCGCC
AGCCCTGGAGGGCAGTGACCTCTGGTCCTTAACAAGGAGGACACGTCCGAACAAGTCGTGCCTGTTTT
GGTAAAGAAGTGAAGAAGGAATGCGCCAAGACTAGGAAGCAGCCGGTGAAGGTCTGTACTCCTCCAAG
GATCCTGCCAGCCGAAAGAGATTCCAAGGTGGATGCGAATGAGGAGGTGGAGGCTTTGATCGTCAAG
CCCCACAGAAGGAGTGGAAACCCCTCTCTGTTAAGGTGTTATACAAGACCTTTGGGCCCTACTTCCCTCAT
GAGCTTCTTCTCAAGGCCATCCACGACCTGATGATGTTTTCCGGGCCGAGATCTTAAAGTTGCTCATC
AAGTTCGTGAACGACACGAAGGCCCCAGACTGGCAGGGCTACTTCTACACCGTGTGCTGTTGTCACTG
CCTGCCTGCAGACCCTCGTGTGCACCACTACTTCCACATCTGCTTCGTGAGTGGATGAGGATCAAGAC
CGCTGTCAATGGGGCTGTCTATCGGAAGGCCCTGGTGATCACCATTAGCCAGAAAATCCTCCACGGTC
GGGAGATTGTCAACCTCATGTCTGTGGACCTCAGAGGTTTCATGGACTGGCCACGTACATTAACATGA
TCTGGTACGCCCCCTGCAAGTCATCCTTGTCTCTACCTCCTGTGGCTGAATCTGGGCCCTTCCGTCCT
GGCTGGAGTGGCGGTGATGGTCCTCATGGTGCCGTCATGCTGTGATGGCGATGAAGACCAAGACGTAT



[View online >](#)

CAGGTGGCCACATGAAGAGCAAAGACAATCGGATCAAGCTGATGAACGAAATTCTCAATGGGATCAAAG
 TGCTAAAGCTTTATGCCTGGGAGCTGGCATTCAAGGACAAGGTGCTGGCCATCAGGCAGGAGGAGCTGAA
 GGTGCTGAAGAAGTCTGCCTACCTGTGACCGTGGGCACCTTCACCTGGGTCTGCACGCCCTTTCTGGTG
 GCCCTGTGCACATTTGCCGTCTACGTGACCATTGACGAGAACAACATCCTGGATGCCAGACAGCCTTCG
 TGTCTTTGGCCTGTTC AACATCCTCCGGTTTCCCCTGAACATTCTCCCATGGTATCAGCAGCATCGT
 GCAGGCGAGTGTCTCCCTCAAACGCCTGAGGATCTTTCTCCCATGAGGAGCTGGAACCTGACAGCATC
 GAGCGACGGCCTGTCAAAGACGGCGGGGCACGAACAGCATCACCGTGAGGAATGCCACATTCACCTGGG
 CCAGGAGCGACCCTCCACACTGAATGGCATCACCTTCTCCATCCCCGAAGGTGCTTTGGTGGCCGTGGT
 GGGCCAGGTGGGCTGCGGAAAGTCGTCCCTGCTCTCAGCCCTCTTGGCTGAGATGGACAAAGTGGAGGGG
 CACGTGGCTATCAAGGGCTCCGTGGCCTATGTGCCACAGCAGGCCTGGATTGAGAATGATTCTCTCCGAG
 AAAACATCCTTTTTGGATGTCAGCTGGAGGAACCATATTACAGTCCGTGATACAGGCCTGTGCCCTCT
 CCCAGACCTGAAATCCTGCCAGTGGGATCGGACAGAGATTGGCGAGAAGGGCGTGAACCTGTCTGGG
 GGCAGAAAGCAGCGCTGAGCCTGGCCGGCCGTGTACTCCAACGCTGACATTTACCTCTCGATGATC
 CCCTCTCAGCAGTGGATGCCATGTGGGAAAACACATCTTTGAAAATGTGATTGGCCCCAAGGGGATGCT
 GAAGAACAAGACGCGGATCTTGGTCAGCACAGCATGAGCTACTTGCCGAGGTGGACGTCATCATCGTC
 ATGAGTGGCGGAAGATCTCTGAGATGGCTCCTACCAGGAGCTGCTGGCTCGAGACGGCCCTTCGCTG
 AGTTCTCGCTACCTATGCCAGCACAGAGCAGGAGCAGGATGCAGAGGAGAACGGGGTACAGGGCGTCAG
 CGGTCCAGGGAAGGAAGCAAAGCAAATGGAGAATGGCATGCTGGTGACGGACAGTGCAGGGAAGCAACTG
 CAGAGACAGCTCAGCAGCTCCTCCTCTATAGTGGGACATCAGCAGGCACCACAACAGCACCCGAGAAC
 TGCAGAAAGCTGAGGCCAAGAAGGAGGAGACCTGGAAGCTGATGGAGGCTGACAAGGCGCAGACAGGGCA
 GGTCAAGCTTTCCGTGTACTGGGACTACATGAAGGCCATCGGACTCTTATCTCCTTCTCAGCATCTTC
 CTTTTCATGTGTAACCATGTGTCCGCGCTGGCTTCCAACATTTGGCTCAGCCTTGACTGATACCCCCA
 TCGTCAACGGGACTCAGGAGCACACGAAAGTCCGGCTGAGCGTCTATGGAGCCCTGGGCAATTTACAAGG
 GATCGCCGTGTTGGCTACTCCATGGCCGTGTCCATCGGGGGATCTTGGCTTCCCGCTGTCTGCACGTG
 GACCTGTGCACAGCATCCTGCGGTACCCATGAGCTTCTTTGAGCGGACCCCCAGTGGGAACCTGGTGA
 ACCGCTTCTCCAAGGAGCTGGACACAGTGGACTCCATGATCCCGGAGGTGATCAAGATGTTGATGGGCTC
 CCTGTTCAACGTCATTGGTGCCTGCATCGTTATCCTGTGGCCACGCCCATCGCCGCCATCATATCCCG
 CCCCTTGGCCTCATCTACTTCTTCTGTCAGAGGTTCTACGTGGCTTCTCCCGCAGCTGAAGCGCCTCG
 AGTCGGTCAGCCGCTCCCGGTCTATCCCATTTCAACGAGACCTTGCTGGGGTTCAGCGTCATTCGAGC
 CTTGAGGAGCAGGAGCGCTTCCACCAGAGTGACCTGAAGGTGGACGAGAACCAGAAGCGCTATTAC
 CCCAGCATCGTGGCCAACAGGTGGCTGGCCGTGCGGCTGGAGTGTGGGCAACTGCATCGTTCTGTTTG
 CTGCCCTGTTGCGGTGATCTCCAGGCACAGCCTCAGTGTGGCTTGGTGGGCCTCTCAGTGTCTTACTC
 ATTGACAGGTACCCACGTAATTGAACTGGCTGGTTCGGATGTCATCTGAAATGGAACCAACATCGTGGCC
 GTGGAGAGGCTCAAGGAGTATTAGAGACTGAGAAGGAGGCGCCCTGGCAAATCCAGGAGACAGCTCCGC
 CCAGCAGCTGGCCCCAGGTGGGCGAGTGGAAATCCGGAACACTGCTGCGCTACCCAGAGGACCTGGA
 CTTCTGTTCTCAGGCACATCAATGTCACGATCAATGGGGGAGAAAAGGTGGCATCGTGGGGCGGACGGGA
 GCTGGGAAGTCTCCCTGACCTGGGCTTATTTCCGATCAACGAGTCTGCCGAAGGAGAGATCATCATCG
 ATGGCATCAACATCGCCAAGATCGGCCTGCACGACCTCCGCTTCAAGATCACCATCATCCCCAGGACCC
 TGTTTTGTTTTCGGGTCCCTCCGAATGAACCTGGACCCATTAGCCAGTACTCGGATGAAGAAGTCTGG
 AGTCCCTGGAGCTGGCCACCTGAAGGACTTCGTGTAGCCCTTCTGACAAGCTAGACCATGAATGTG
 CAGAAGGCGGGGAGAACCTCAGTGTGGGACGCGCCAGCTTGTGTGCTAGCCCGGGCCCTGCTGAGGAA
 GACGAAGATCCTTGTGTTGGATGAGGCCAGGCAGCCGTGGACCTGAAAACGGACGACCTCATCCAGTCC
 ACCATCCGGACACAGTTCGAGGACTGCACCGTCTCACCATCGCCACCGGCTCAACACCATCATGGACT
 ACACAAGGTGATCGTCTTGGACAAAGGAGAAATCCAGGAGTACGGCGCCCCATCGGACCTCTGCAGCA
 GAGAGGTCTTTTCTACAGCATGGCCAAAGACGCCGCTTGGTG

ACGCGTACGCGGCCGCTCGAGCAGAACTCATCTCAGAAGAGGATCTGGCAGCAAATGATATCCTGGATT
 ACAAGGATGACGACGATAAGGTTTAA

Protein Sequence: >RC218182 representing NM_004996
Red=Cloning site Green=Tags(s)

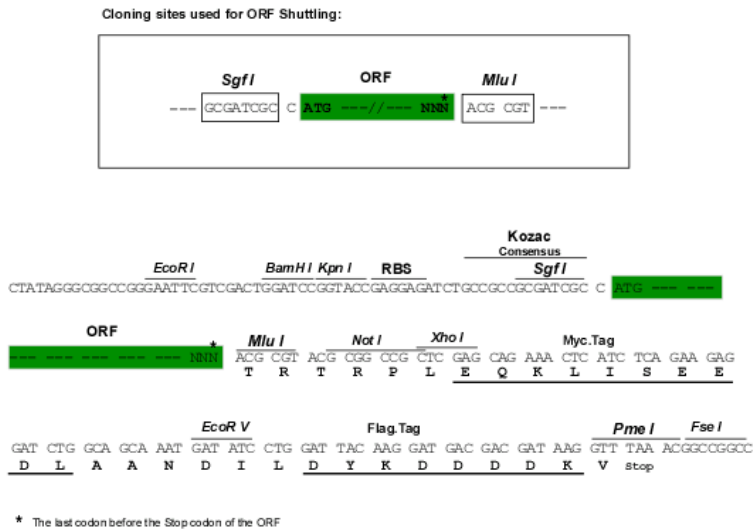
```
MALRGFCSADGSDPLWDNVNTWNTSNPDFTKCFQNTVLVWVPCFYLVACFPFYFLYLSRHDRGYIQMTPL
NKTKTALGFLLIWVCWADLFYSFWERSRGIFLAPVFLVSPTLLGITMLLATFLIQLERRKGVQSSGIMLT
FWLVALVCALAILRSKIMTALKEDAQVDLFRDITFYVYFSLLLIQLVLSCFSDRSPLFSEITHDPNPCPE
SSASFLSRITFWWITGLIVRGYRQPLEGSDLWLNKEDTSEQVVPVLVKNWKKCAKTRKQPVKVVYSSK
DPAQPKESSKVDANEVEALIVKSPQKEWNPSLFFKVIYKTFGPYFLMSFFFKAIHDLMMFSGPQILKLLI
KFNVDTKAPDWQGYFYTVLLFVTACLQTLVLHQYFHICFVSGMRIKTAVIGAVYRKALVITNSARKSSTV
GEIVNLSVDAQRFMDLATYINMIWSAPLQVILALYLLWNLGPSVLAGVAVMVMVPMVNAVMAMKTKTY
QVAHMSKDNRIKLMNEILNGIKVLKLYAWELAFKDKVLAIRQEELKVLKKSAYLSAVGTFTWVCTPFLV
ALCTFAVYVITDENNILDQAQAFVSLALFNILRFPLNIPMVISSIVQASVSLKRLRIFLSHEELEPDSI
ERRPVKDGGSNTITVRNATFTWARSPPPTLNGITFSIPEGALVAVVGVQVCGKSSLLSALLAEMDKVEG
HVAIKGSVAYVPQAWIQNDSLRENILFGCQLEEPYYSVIQACALLPDLEILPSGRTEIGEKGNLSSG
GQKQVSLARAVYSNADIYLFDDPLSAVDAHVGKHFENVIGPKGMLKNKTRILVTHSMSYLPQVDVIV
MSGGKISEMSYQELLARDGAFAEFLRTYASTEQEQDAEENGVTGVSGPKKEAKQMEMGLVTDTSAGKQL
QRQLSSSSSYSGDIRHHNSTAELQKAEAKKEETWKLMEADKAQTGQVKLSVYWDYMKAIGLFISFLSIF
LFMCNHVSALASNYWLSLWTDPIVNGTQEHKVRLSVYGALGISQGIAVFGYSMAVSIIGILASRCLHV
DLLHSILRSPMSFFERTPSGNL VNRFSKELDTVDSMIPEVIKMFMSGLFNIVIGACIVILLATPIAAIIIP
PLGLIYFFVQRFYVASSRQLKRLESVSRSPVYSHFNETLLGVSIVIRAFEEQERFIHQSDLKVDENQKAYY
PSIVANRWLAVRLECVGNLIVLFAALFAVSRHSLSAGLVGLSVSYSLQVTTYLNWLVRMSSEMETNIVA
VERLKEYSETEKEAPWQIQETAPPSSWPQVGRVEFRNYCLRYREDLDFVLRHINVTINGGEKVGIVGRTG
AGKSSLTLGLFRINESAEGEIIIDGINIAKIGLHDLRFKITIIIPQDPVLSGSLRMNLDPFQSYSDDEEVEW
TSELEHLKDFVSALPDKLDHECAEGGENLSVGQRQLVCLARALLRKTILVLDEATAAVDLETDDLIQS
TIRTQFEDCTVLTIAHRLNTIMDYTRVIVLDKGEIQEYGAPSDLLQQRGLFYSMAKDAGLV
```

TRTRPLEQKLISEEDLAANDILDYKDDDDKV

Chromatograms: https://cdn.origene.com/chromatograms/mg3389_f09.zip

Restriction Sites: SgfI-MluI

Cloning Scheme:

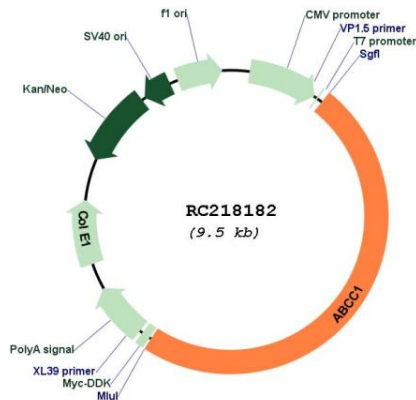


ACCN: NM_004996

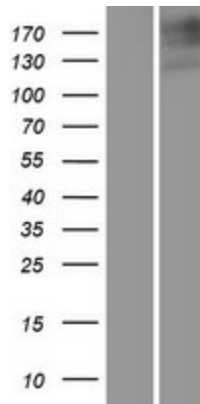
| | |
|-------------------------------|---|
| ORF Size: | 4593 bp |
| OTI Disclaimer: | The molecular sequence of this clone aligns with the gene accession number as a point of reference only. However, individual transcript sequences of the same gene can differ through naturally occurring variations (e.g. polymorphisms), each with its own valid existence. This clone is substantially in agreement with the reference, but a complete review of all prevailing variants is recommended prior to use. More info |
| OTI Annotation: | This clone was engineered to express the complete ORF with an expression tag. Expression varies depending on the nature of the gene. |
| Components: | The ORF clone is ion-exchange column purified and shipped in a 2D barcoded Matrix tube containing 10ug of transfection-ready, dried plasmid DNA (reconstitute with 100 ul of water). |
| Reconstitution Method: | <ol style="list-style-type: none">1. Centrifuge at 5,000xg for 5min.2. Carefully open the tube and add 100ul of sterile water to dissolve the DNA.3. Close the tube and incubate for 10 minutes at room temperature.4. Briefly vortex the tube and then do a quick spin (less than 5000xg) to concentrate the liquid at the bottom.5. Store the suspended plasmid at -20°C. The DNA is stable for at least one year from date of shipping when stored at -20°C. |
| Note: | Plasmids are not sterile. For experiments where strict sterility is required, filtration with 0.22um filter is required. |
| RefSeq: | NM_004996.4 |
| RefSeq Size: | 5927 bp |
| RefSeq ORF: | 4596 bp |
| Locus ID: | 4363 |
| UniProt ID: | P33527 |
| Cytogenetics: | 16p13.11 |
| Domains: | ABC_membrane, ABC_tran, AAA |
| Protein Families: | Druggable Genome, Transmembrane |
| Protein Pathways: | ABC transporters |
| MW: | 171.4 kDa |

Gene Summary:

The protein encoded by this gene is a member of the superfamily of ATP-binding cassette (ABC) transporters. ABC proteins transport various molecules across extra-and intra-cellular membranes. ABC genes are divided into seven distinct subfamilies (ABC1, MDR/TAP, MRP, ALD, OABP, GCN20, White). This full transporter is a member of the MRP subfamily which is involved in multi-drug resistance. This protein functions as a multispecific organic anion transporter, with oxidized glutathione, cysteinyl leukotrienes, and activated aflatoxin B1 as substrates. This protein also transports glucuronides and sulfate conjugates of steroid hormones and bile salts. Alternatively spliced variants of this gene have been described but their full-length nature is unknown. [provided by RefSeq, Apr 2012]

Product images:


Circular map for RC218182



Western blot validation of overexpression lysate (Cat# [LY417598]) using anti-DDK antibody (Cat# [TA50011-100]). Left: Cell lysates from untransfected HEK293T cells; Right: Cell lysates from HEK293T cells transfected with RC218182 using transfection reagent MegaTran 2.0 (Cat# [TT210002]).