

Product datasheet for RC218181

CD14 (NM_001040021) Human Tagged ORF Clone

Product data:

Product Type:	Expression Plasmids
Product Name:	CD14 (NM_001040021) Human Tagged ORF Clone
Tag:	Myc-DDK
Symbol:	CD14
Mammalian Cell Selection:	Neomycin
Vector:	pCMV6-Entry (PS100001)
E. coli Selection:	Kanamycin (25 ug/mL)
ORF Nucleotide Sequence:	>RC218181 ORF sequence Red=Cloning site Blue=ORF Green=Tags(s)

TTTTGTAATACGACTCACTATAGGGCGGCCGGAATTCGTCGACTGGATCCGGTACCGAGGAGATCTGCC
GCC**CGATCGCC**

ATGGAGCGCGCTCCTGCTTGTGCTGCTGCTGCTGCCGCTGGTGCACGTCTCTGCGACCAGCCAGAAC
CTTGTGAGCTGGACGATGAAGATTTCCGCTGCGTCTGCAACTTCTCCGAACCTCAGCCCGACTGGTCCGA
AGCCTTCCAGTGTGTGCTGCAGTAGAGGTGGAGATCCATGCCGGCGGTCTAACCTAGAGCCGTTTCTA
AAGCGCGTCGATGCGGACGCCACCCCGCGCAGTATGCTGACACGGTCAAGGCTCTCCGCTGCGGCGGC
TCACAGTGGGAGCCGACAGGTTCTGCTCAGCTACTGGTAGGGCCCTGCGTGTGCTAGCGTACTCCCG
CCTCAAGGAAGTACGCTCGAGGACCTAAAGATAACCGGCACCATGCCTCCGCTGCCTCTGGAAGCCACA
GGACTTGCACTTTCCAGCTTGGCCTACGCAACGTGTCGTGGGCGACAGGGCGTTCTTGGCTCGCCGAGC
TGCAGCAGTGGCTCAAGCCAGGCCTCAAGGTAAGTACTGAGCATTGCCCAAGCACACTCGCCTGCTTTTCTG
CGAACAGGTTTCGCGCCTTCCCGCCCTTACCAGCCTAGACCTGTCTGACAATCCTGGACTGGGCGAACGC
GGACTGATGGCGGCTCTCTGTCCCACAAGTTCGCGCCATCCAGAATCTAGCGCTGCGCAACACAGGAA
TGGAGACGCCACAGGCGTGTGCGCCGACTGGCGGCGCAGGTGTGAGCCACAGCCTAGACCTCAG
CCACAACCTGCTGCGCGCCACCCTAAACCCTAGCGCTCCGAGATGCATGTGGTCCAGCGCCCTGAACCTC
CTCAATCTGTCGTTTCGCTGGGCTGGAACAGGTGCCTAAAGGACTGCCAGCCAAGCTCAGAGTGTCTGATC
TCAGCTGCAACAGACTGAACAGGGCGCCGAGCCTGACGAGCTGCCCGAGGTGGATAACCTGACACTGGA
CGGAATCCCTTCTGGTCCCTGGAAGTCCCTCCCCACGAGGGCTCAATGAACTCCGCGGTGGTCCCA
GCCTGTGCACGTTTCGACCTGTCCGGTGGGGGTGTGCGGAACCCTGGTGTCTCCAAGGGGCCCGGGGT
TTGCC

ACGCGTACGCGGCCGCTCGAGCAGAACTCATCTCAGAAGAGGATCTGGCAGCAATGATATCCTGGATT
ACAAGGATGACGACGATAAGGTTTAA



[View online »](#)

Protein Sequence: >RC218181 protein sequence
Red=Cloning site Green=Tags(s)

MERASCLLLLLLPLVHVSATTPEPCELDDEDFRCVCFNFSEPQPDWSEAFQCVSAVEVEIHAGGLNLEPFL
 KRVDADADPRQYADTVKALRVRRLTVGAAQVPAQLLVGALRVLAYSRLKELTLEDLKITGTMPPLEAT
 GLALSSLRLRNVSATGRSWLAELQQWLKPKLVLSIAQAHSPAFSCEQVRAFPAALTSLDLSDNPGLGER
 GLMAALCPHKFPAIQNLALRNTGMETPTGVCAALAAAGVQPHSLDLSHNSLRATVNPSPAPRCMWSSALNS
 LNL SFAGLEQVPKGLPAKLRVLDLSCNRLNRAPQPELPEVDNLTL DGNPFLVPGTALPHEGSMNSGVVP
 ACARSTLSVGVSGTLVLLQGARGFA

TRTRPLEQKLISEEDLAANDILDYKDDDDKV

Chromatograms: https://cdn.origene.com/chromatograms/mk6306_f06.zip

Restriction Sites: SgfI-MluI

Cloning Scheme:

Cloning sites used for ORF Shuttling:



* The last codon before the Stop codon of the ORF

ACCN: NM_001040021

ORF Size: 1125 bp

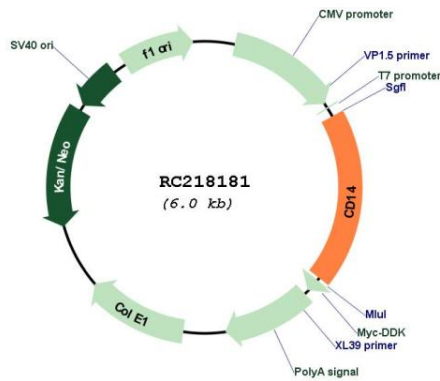
OTI Disclaimer: The molecular sequence of this clone aligns with the gene accession number as a point of reference only. However, individual transcript sequences of the same gene can differ through naturally occurring variations (e.g. polymorphisms), each with its own valid existence. This clone is substantially in agreement with the reference, but a complete review of all prevailing variants is recommended prior to use. [More info](#)

OTI Annotation: This clone was engineered to express the complete ORF with an expression tag. Expression varies depending on the nature of the gene.

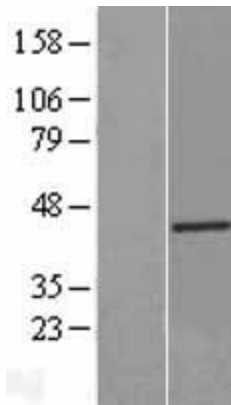
Components: The ORF clone is ion-exchange column purified and shipped in a 2D barcoded Matrix tube containing 10ug of transfection-ready, dried plasmid DNA (reconstitute with 100 ul of water).

Reconstitution Method:	<ol style="list-style-type: none">1. Centrifuge at 5,000xg for 5min.2. Carefully open the tube and add 100ul of sterile water to dissolve the DNA.3. Close the tube and incubate for 10 minutes at room temperature.4. Briefly vortex the tube and then do a quick spin (less than 5000xg) to concentrate the liquid at the bottom.5. Store the suspended plasmid at -20°C. The DNA is stable for at least one year from date of shipping when stored at -20°C.
RefSeq:	NM_001040021.3
RefSeq Size:	1561 bp
RefSeq ORF:	1128 bp
Locus ID:	929
UniProt ID:	P08571
Cytogenetics:	5q31.3
Protein Families:	Adult stem cells, Druggable Genome, Embryonic stem cells, ES Cell Differentiation/IPS, Transmembrane
Protein Pathways:	Hematopoietic cell lineage, MAPK signaling pathway, Pathogenic Escherichia coli infection, Regulation of actin cytoskeleton, Toll-like receptor signaling pathway
MW:	40.1 kDa
Gene Summary:	The protein encoded by this gene is a surface antigen that is preferentially expressed on monocytes/macrophages. It cooperates with other proteins to mediate the innate immune response to bacterial lipopolysaccharide, and to viruses. This gene has been identified as a target candidate in the treatment of SARS-CoV-2-infected patients to potentially lessen or inhibit a severe inflammatory response. Alternative splicing results in multiple transcript variants encoding the same protein. [provided by RefSeq, Aug 2020]

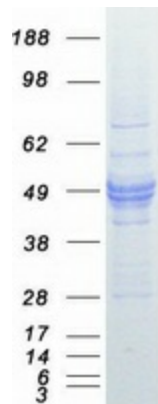
Product images:



Circular map for RC218181



Western blot validation of overexpression lysate (Cat# [LY421877]) using anti-DDK antibody (Cat# [TA50011-100]). Left: Cell lysates from untransfected HEK293T cells; Right: Cell lysates from HEK293T cells transfected with RC218181 using transfection reagent MegaTran 2.0 (Cat# [TT210002]).



Coomassie blue staining of purified CD14 protein (Cat# [TP318181]). The protein was produced from HEK293T cells transfected with CD14 cDNA clone (Cat# RC218181) using MegaTran 2.0 (Cat# [TT210002]).