

Product datasheet for **RC218177**

Lymphotactin (XCL1) (NM_002995) Human Tagged ORF Clone

Product data:

Product Type: Expression Plasmids
Product Name: Lymphotactin (XCL1) (NM_002995) Human Tagged ORF Clone
Tag: Myc-DDK
Symbol: Lymphotactin
Synonyms: ATAC; LPTN; LTN; SCM-1; SCM-1a; SCM1; SCM1A; SCYC1
Mammalian Cell Selection: Neomycin
Vector: pCMV6-Entry (PS100001)
E. coli Selection: Kanamycin (25 ug/mL)
ORF Nucleotide Sequence: >RC218177 ORF sequence
Red=Cloning site Blue=ORF Green=Tags(s)

TTTTGTAATACGACTCACTATAGGGCGCCGGGAATTCGTCGACTGGATCCGGTACCGAGGAGATCTGCC
GCC**CGATCGCC**

ATGAGACTTCTCATCCTGGCCCTCCTTGGCATCTGCTCTCTCACTGCATACATTGTGGAAGGTGTAGGGA
GTGAAGTCTCAGATAAGAGGACCTGTGTGAGCCTCACTACCCAGCGACTGCCGGTAGCAGAATCAAGAC
CTACACCATCACGGAAGGCTCCTTGAGAGCAGTAATTTTTATTACCAAACGTGGCCTAAAAGTCTGTGCT
GATCCACAAGCCACATGGGTGAGAGACGTGGTCAGGAGCATGGACAGGAAATCCAACACCAGAAATAACA
TGATCCAGACCAAGCCAACAGGAACCCAGCAATCGACCAATACAGCTGTGACTCTGACTGGC

ACGCGTACGCGGCCGCTCGAGCAGAAACTCATCTCAGAAGAGGATCTGGCAGCAAATGATATCCTGGATT
ACAAGGATGACGACGATAAGGTTTAA

Protein Sequence: >RC218177 protein sequence
Red=Cloning site Green=Tags(s)
MRLILALLGICSLTAYIVEGVGSEVSDKRTCVSLLTQRLPVSRIKTYTITEGSLRAVIFITKRGLKVCA
DPQATWVRDVVRSMDRKSNTNMIQTKPTGTQSTNTAVTLTG

TRTRPLEQKLISEEDLAANDILDYKDDDDKV

Chromatograms: https://cdn.origene.com/chromatograms/mk6547_d08.zip

Restriction Sites: SgfI-MluI



[View online »](#)

Cloning Scheme:



ACCN: NM_002995

ORF Size: 342 bp

OTI Disclaimer: Due to the inherent nature of this plasmid, standard methods to replicate additional amounts of DNA in E. coli are highly likely to result in mutations and/or rearrangements. Therefore, OriGene does not guarantee the capability to replicate this plasmid DNA. Additional amounts of DNA can be purchased from OriGene with batch-specific, full-sequence verification at a reduced cost. Please contact our customer care team at custsupport@origene.com or by calling 301.340.3188 option 3 for pricing and delivery.

The molecular sequence of this clone aligns with the gene accession number as a point of reference only. However, individual transcript sequences of the same gene can differ through naturally occurring variations (e.g. polymorphisms), each with its own valid existence. This clone is substantially in agreement with the reference, but a complete review of all prevailing variants is recommended prior to use. [More info](#)

OTI Annotation: This clone was engineered to express the complete ORF with an expression tag. Expression varies depending on the nature of the gene.

Components: The ORF clone is ion-exchange column purified and shipped in a 2D barcoded Matrix tube containing 10ug of transfection-ready, dried plasmid DNA (reconstitute with 100 ul of water).

Reconstitution Method:

1. Centrifuge at 5,000xg for 5min.
2. Carefully open the tube and add 100ul of sterile water to dissolve the DNA.
3. Close the tube and incubate for 10 minutes at room temperature.
4. Briefly vortex the tube and then do a quick spin (less than 5000xg) to concentrate the liquid at the bottom.
5. Store the suspended plasmid at -20°C. The DNA is stable for at least one year from date of shipping when stored at -20°C.

RefSeq: [NM_002995.3](#)

RefSeq Size: 1367 bp

RefSeq ORF: 345 bp

Locus ID: 6375

UniProt ID: [P47992](#)

Cytogenetics: 1q24.2

Domains: IL8

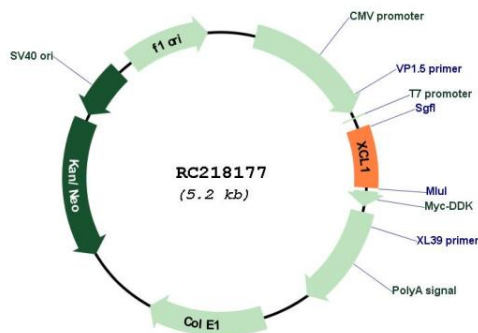
Protein Families: Druggable Genome, Secreted Protein

Protein Pathways: Chemokine signaling pathway, Cytokine-cytokine receptor interaction

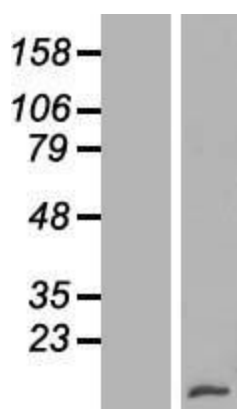
MW: 12.5 kDa

Gene Summary: This antimicrobial gene encodes a member of the chemokine superfamily. Chemokines function in inflammatory and immunological responses, inducing leukocyte migration and activation. The encoded protein is a member of the C-chemokine subfamily, retaining only two of four cysteines conserved in other chemokines, and is thought to be specifically chemotactic for T cells. This gene and a closely related family member are located on the long arm of chromosome 1. [provided by RefSeq, Sep 2014]

Product images:



Circular map for RC218177



Western blot validation of overexpression lysate (Cat# [LY418965]) using anti-DDK antibody (Cat# [TA50011-100]). Left: Cell lysates from untransfected HEK293T cells; Right: Cell lysates from HEK293T cells transfected with RC218177 using transfection reagent MegaTran 2.0 (Cat# [TT210002]).