

Product datasheet for RC218163

JMJD6 (NM_001081461) Human Tagged ORF Clone

Product data:

Product Type: Expression Plasmids
Product Name: JMJD6 (NM_001081461) Human Tagged ORF Clone
Tag: Myc-DDK
Symbol: JMJD6
Synonyms: PSR; PTDSR; PTDSR1
Mammalian Cell Selection: Neomycin
Vector: pCMV6-Entry (PS100001)
E. coli Selection: Kanamycin (25 ug/mL)
ORF Nucleotide Sequence: >RC218163 representing NM_001081461
 Red=Cloning site Blue=ORF Green=Tags(s)

TTTTGTAATACGACTCACTATAGGGCGGCCGGAATTCGTCGACTGGATCCGGTACCGAGGAGATCTGCC
 GCC**CGATCGCC**

ATGAACCACAAGAGCAAGAAGCGCATCCGCGAGGCCAAGCGGAGTGCGCGGCCGGAGCTCAAGGACTCGC
 TGGATTGGACCCGGCACAACACTACGAGAGCTTCTCGTGAGCCCGGCCGCGTGGCGGATAACGTGGA
 AAGGGCAGATGCTTTACAGCTGTCTGTGGAAGAATTTGTGGAGCGGTATGAAAGACCTTACAAGCCCGTG
 GTTTTGTGAATGCGCAAGAGGGCTGGTCTGCGCAGGAGAAATGGACTCTGGAGCGCCTAAAAGGAAAT
 ATCGGAACCAGAAGTTCAAGTGTGGTGAAGATAACGATGGCTACTCAGTGAAGATGAAGATGAAATACTA
 CATCGAGTACATGGAGAGCACTCGAGATGATAGTCCCCTTTACATCTTTGACAGCAGCTATGGTGAACAC
 CCTAAAAGAAGGAACTTTTGAAGACTACAAGGTGCCAAAGTTTTTCACTGATGACCTTTTCCAGTATG
 CTGGGGAGAAGCGCAGGCCCTTACAGGTGGTTTGTGATGGGGCCACCACGCTCCGGAAGTGGATTCA
 CATCGACCCTCTGGGAACCAAGTGCCTGGAATGCCTTAGTTAGGGCCACAAGCGCTGGTGCCTGTTTCT
 ACCAGCACTCCCAGGGAACATCAAAGTGACCCGAGACGAAGGAGGGAACCAAGACGAAGCTATTA
 CCTGGTTAATGTTATTTATCCCGGACACAGCTTCCAACCTGGCCACCTGAATCAAACCCCTGGAAAT
 CTTACAAAAACCAGGAGAGACTGTCTTTGTACCAGGAGGCTGGTGGCATGTTGTCTCAATCTCGACT
 ACTATCGCCATCACCCAAAATTTTGGCAGCAGCACCAACTTCCCTGTGGTATGGCACAAGACGGTAAGAG
 GGAGACCAAGTTATCAAGGAAATGGTATAGGATTTTGAAGCAAGACACCCGAGTTGGCAGTCTCGC
 AGACTCGTTGACCTTACAGGAGTCCACAGGGATAGCTTCCGACAGCTCCAGCGACTCTTCCAGCTCCTCC
 AGCTCCAGTTCGTGAGCTCCGACTCAGAGTGCAGTCTGGATCCGAGGGCGATGGGACAGTGCACCCGA
 GGAAGAAGAGGAGGACGTGCAGCATGGTGGAAACGGGGACACCCTCCAGGACGACTGTGTCAGCAA
 AGAGCGCAGCTCCTCCAGGATTAGGGACTTGTGGAGGCCGGGCTCACCC

ACGCGTACGCGGCCGCTCGAGCAGAAACTCATCTCAGAAGAGGATCTGGCAGCAAATGATATCCTGGATT
 ACAAGGATGACGACGATAAGGTTTAA



[View online >](#)

Protein Sequence: >RC218163 representing NM_001081461
Red=Cloning site Green=Tags(s)

MNHKSKKRIREAKRSARPELKDSLWTRHNYYESFSLSPAADVADNVERADALQLSVEEFVERYERPYKPV
 VLLNAQEGWSAQEKWTLERLKRKYRNQKFKCGEDNDGYSVKMKMKYYIEYMESTRDDSPLYIFDSSYGEH
 PKRRKLLLEDYKVPKFFTDLLFQYAGEKRRPPYRWFVMGPPRSGTGIHIDPLGTSAWNALVQGHKRWCLFP
 TSTPRELIKVTRDEGGNQDEAITWFNVIYPTQLPTWPPEFKPLEILQKPGETVFPVGGWWHVVLNLDL
 TIAITQNFASSTNFPVVWHKTVRGRPKLSRKWYRILKQEHPELAVLADSVDLQESTGIASDSSDSSSSSS
 SSSSDSDSECESESGEGDGTVHRRKKRRTCSMVGNGDTSQDDCVSKERSSSRIRDTCGGRAHP

TRTRPLEQKLISEEDLAANDILDYKDDDDKV

Chromatograms: https://cdn.origene.com/chromatograms/mg3065_e05.zip

Restriction Sites: SgfI-MluI

Cloning Scheme:



* The last codon before the Stop codon of the ORF

ACCN: NM_001081461

ORF Size: 1242 bp

OTI Disclaimer: The molecular sequence of this clone aligns with the gene accession number as a point of reference only. However, individual transcript sequences of the same gene can differ through naturally occurring variations (e.g. polymorphisms), each with its own valid existence. This clone is substantially in agreement with the reference, but a complete review of all prevailing variants is recommended prior to use. [More info](#)

OTI Annotation: This clone was engineered to express the complete ORF with an expression tag. Expression varies depending on the nature of the gene.

Components: The ORF clone is ion-exchange column purified and shipped in a 2D barcoded Matrix tube containing 10ug of transfection-ready, dried plasmid DNA (reconstitute with 100 ul of water).

Reconstitution Method:

1. Centrifuge at 5,000xg for 5min.
2. Carefully open the tube and add 100ul of sterile water to dissolve the DNA.
3. Close the tube and incubate for 10 minutes at room temperature.
4. Briefly vortex the tube and then do a quick spin (less than 5000xg) to concentrate the liquid at the bottom.
5. Store the suspended plasmid at -20°C. The DNA is stable for at least one year from date of shipping when stored at -20°C.

RefSeq: [NM_001081461.2](#)

RefSeq Size: 5445 bp

RefSeq ORF: 1245 bp

Locus ID: 23210

UniProt ID: [Q6NYC1](#)

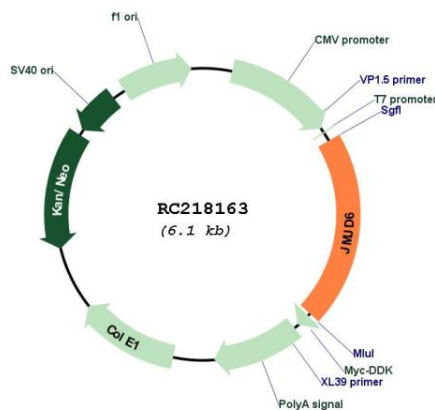
Cytogenetics: 17q25.1

Protein Families: Druggable Genome, ES Cell Differentiation/IPS

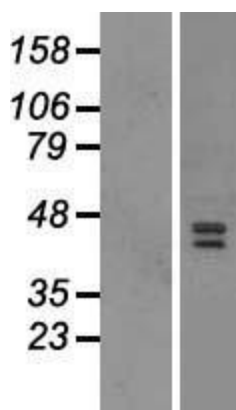
MW: 47.4 kDa

Gene Summary: This gene encodes a nuclear protein with a JmjC domain. JmjC domain-containing proteins are predicted to function as protein hydroxylases or histone demethylases. This protein was first identified as a putative phosphatidylserine receptor involved in phagocytosis of apoptotic cells; however, subsequent studies have indicated that it does not directly function in the clearance of apoptotic cells, and questioned whether it is a true phosphatidylserine receptor. Multiple transcript variants encoding different isoforms have been found for this gene. [provided by RefSeq, Jul 2008]

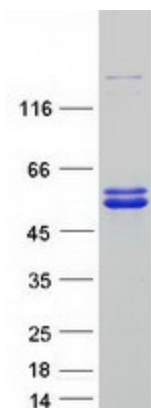
Product images:



Circular map for RC218163



Western blot validation of overexpression lysate (Cat# [LY421156]) using anti-DDK antibody (Cat# [TA50011-100]). Left: Cell lysates from untransfected HEK293T cells; Right: Cell lysates from HEK293T cells transfected with RC218163 using transfection reagent MegaTran 2.0 (Cat# [TT210002]).



Coomassie blue staining of purified JMJD6 protein (Cat# [TP318163]). The protein was produced from HEK293T cells transfected with JMJD6 cDNA clone (Cat# RC218163) using MegaTran 2.0 (Cat# [TT210002]).