

## Product datasheet for RC218155

### HOMER2 (NM\_199332) Human Tagged ORF Clone

#### Product data:

Product Type:	Expression Plasmids
Product Name:	HOMER2 (NM_199332) Human Tagged ORF Clone
Tag:	Myc-DDK
Symbol:	HOMER2
Synonyms:	ACPD; CPD; HOMER-2; HOMER2A; HOMER2B; Vesl-2
Mammalian Cell Selection:	Neomycin
Vector:	pCMV6-Entry (PS100001)
E. coli Selection:	Kanamycin (25 ug/mL)
ORF Nucleotide Sequence:	>RC218155 representing NM_199332 Red=Cloning site Blue=ORF Green=Tags(s)

TTTTGTAATACGACTCACTATAGGGCGGCCGGAATTCGTCGACTGGATCCGGTACCGAGGAGATCTGCCGCC**CGATCGCC**

ATGGGAGAACAGCCCATCTTCACCACCCGAGCGCATGTCTTCCAGATTGACCCCAACACCAAGAAGAACTGGATGCCTGCGAGCAAGCAGGCGGTACCCTTCTACTTCTATGATGTCACAAGGAACAGCTATCGGATCATCAGTGTGGACGGAGCCAAGGTGATCATAAACAGCACAATCACACCGAATATGACCTTACCAAAAACGTCACAGAAGTTTGGCAGTGGGCCGACAGCAGAGCCAACACAGTGTGGTTGGGGTTTCTCTGAGCAGCAGTGACAAAAGTTTGCAGAGAAATCCAGGAGGTGAAAGAAGCTGCCAAGATAGCCAAGACAAGACGCAGGAGAAAATCGAGACCTCAAGTAATCATTCCAAGAATCTGGGCGTGAAACCCCATCTTCTACTCAGCATCCAGTGTCACGGGACGGACGATGAAAAGGCCTCTCACGCCGTCAGCCAACACACACCTGAAGTCTGAGAATGACAAGCTGAAGATTGCCTTGACGCAGAGCGCAGCCAACGTGAAGAATGAGATCAACAGAGA GAAGGAGAAGAACACGCAGCTGAAGAGGAGGATCGAGGAGCTGGAGGCAGAGCTCCGAGAAAAGGAGACAGAGCTGAAAGATCTCCGAAAACAAAGTGAATCATACCTCAGCTCATGTCAGAGTGCGAATATGTCTCTGAGAAGCTAGAGGCGGCAGAGAGACAATCAAAACCTGGAAGACAAGTGCCTTCTTAAAGACAGACAT TGAGGAGAGCAAATACCGACAGCGCCACCTGAAGGTGGAGTTGAAGAGCTTCTGGAGGTGCTGGACGGG AAGATTGACGACCTGCATGACTTCGCCGAGGGCTCTCCAAGCTGGGCACCGATAAC

**ACGCGT**ACGCGGCCGCTCGAGCAGAAACTCATCTCAGAAGAGGATCTGGCAGCAAATGATATCCTGGATTACAAGGATGACGACGATAAGGTTTAA



[View online »](#)

**Protein Sequence:** >RC218155 representing NM\_199332  
Red=Cloning site Green=Tags(s)

MGEQPIFTTRAHVFDIDPNTKKNWMPASKQAVTVSYFYDVTRNSYRIISVDGAKVIINSTITPNMTFTKT  
 SQKFGQWADSRANTVFGGLFSSEQQLTKFAEKFEVKEAAKIAKDKTQEKIETSSNHSQESGRETPSSTQ  
 ASSVNGTDDEKASHAGPANTHLKSENDLKIALLTQSAANVKNEINREKEKNTQLKRRIEELEAELREKET  
 ELKDLRKQSEIIPQLMSECEYVSEKLEAAERDNQNLLEDKVRSLKTDIEESKYRQRHLKVELKSFLEVLDG  
 KIDDLHDFRRGLSKLGTDN

TRTRPLEQKLISEEDLAANDILDYKDDDDKV

**Chromatograms:** [https://cdn.origene.com/chromatograms/mk8050\\_e06.zip](https://cdn.origene.com/chromatograms/mk8050_e06.zip)

**Restriction Sites:** SgfI-MluI

**Cloning Scheme:**



**ACCN:** NM\_199332

**ORF Size:** 897 bp

**OTI Disclaimer:** The molecular sequence of this clone aligns with the gene accession number as a point of reference only. However, individual transcript sequences of the same gene can differ through naturally occurring variations (e.g. polymorphisms), each with its own valid existence. This clone is substantially in agreement with the reference, but a complete review of all prevailing variants is recommended prior to use. [More info](#)

**OTI Annotation:** This clone was engineered to express the complete ORF with an expression tag. Expression varies depending on the nature of the gene.

**Components:** The ORF clone is ion-exchange column purified and shipped in a 2D barcoded Matrix tube containing 10ug of transfection-ready, dried plasmid DNA (reconstitute with 100 ul of water).

**Reconstitution Method:**

1. Centrifuge at 5,000xg for 5min.
2. Carefully open the tube and add 100ul of sterile water to dissolve the DNA.
3. Close the tube and incubate for 10 minutes at room temperature.
4. Briefly vortex the tube and then do a quick spin (less than 5000xg) to concentrate the liquid at the bottom.
5. Store the suspended plasmid at -20°C. The DNA is stable for at least one year from date of shipping when stored at -20°C.

**RefSeq:** [NM\\_199332.2](#), [NP\\_955364.2](#)

**RefSeq Size:** 1840 bp

**RefSeq ORF:** 899 bp

**Locus ID:** 9455

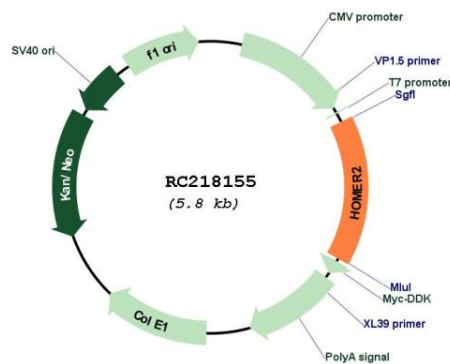
**Cytogenetics:** 15q25.2

**Protein Families:** Druggable Genome

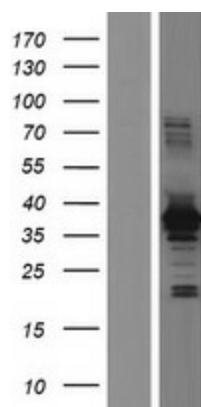
**MW:** 33.9 kDa

**Gene Summary:** This gene encodes a member of the homer family of dendritic proteins. Members of this family regulate group 1 metabotropic glutamate receptor function. The encoded protein is a postsynaptic density scaffolding protein. Alternative splicing results in multiple transcript variants. Two related pseudogenes have been identified on chromosome 14. [provided by RefSeq, Jun 2011]

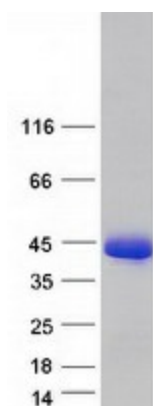
## Product images:



Circular map for RC218155



Western blot validation of overexpression lysate (Cat# [LY404627]) using anti-DDK antibody (Cat# [TA50011-100]). Left: Cell lysates from untransfected HEK293T cells; Right: Cell lysates from HEK293T cells transfected with RC218155 using transfection reagent MegaTran 2.0 (Cat# [TT210002]).



Coomassie blue staining of purified HOMER2 protein (Cat# [TP318155]). The protein was produced from HEK293T cells transfected with HOMER2 cDNA clone (Cat# RC218155) using MegaTran 2.0 (Cat# [TT210002]).