

Product datasheet for RC218154

STAG3L1 (NM_018991) Human Tagged ORF Clone

Product data:

Product Type:	Expression Plasmids
Product Name:	STAG3L1 (NM_018991) Human Tagged ORF Clone
Tag:	Myc-DDK
Symbol:	STAG3L1
Synonyms:	DKFZp434A0131; FLJ78546; MGC40269; MGC131759; STAG3L2; STAG3L3
Mammalian Cell Selection:	Neomycin
Vector:	pCMV6-Entry (PS100001)
E. coli Selection:	Kanamycin (25 ug/mL)
ORF Nucleotide Sequence:	>RC218154 representing NM_018991 Red=Cloning site Blue=ORF Green=Tags(s)

TTTTGTAATACGACTCACTATAGGGCGCCGGGAATTCGTCGACTGGATCCGGTACCGAGGAGATCTGCC
GCCCGCATCGCC

ATGATCTTTTCAATGCTGCGAAAGCTGCCAAAAGTGACATGCAGGGATGCCTTCCTGAGATCCGTGCTA
TCTGCATTGAGGAAATTGGGTGTTGGATGCAAAGCTACAGCACGTCTTCCTCACCGACAGCTATTTAAA
ATATATTGGTTGGACTCTGCATGATAAGCACCGAGAAGTCCGCGTGAAGTGCCTGAAGGCTCTGAAAGGG
CTGTACGGTAACCGGGACCTGACCGCACGCTGGAGCTCTTCACTGGCCGCTTCAAGGACTGGATGGTTT
CCATGATCGTGGACAGAGAGTACAGTGTGGCAGTGGAGGCGTCAAGTACTGATACTTATCCTTAAACT
TTTCTACCCTGAGTGCAGATAAGAACGATGGGTGGAAGAGAGCAACGCCAGAGCCAGGTGCCAGAGG
ACTTTCTCCAGCTTCTGCTGTCCTTTTGTGGAGAGCAAGCTCCACGACCACGCTGCTTACTTAGTAG
ACAACCTGTGGGACTGTGCAGGGACTCAGCTGAAGGACTGGGAGGGTCTGACAAGCCTGCTGCTGGAGAA
GGACCAGAGCACGTGCCACATGGAGCCAGGGCCAGGGACCTTCCACCTCTAGGG

ACGCGTACGCGGCCGCTCGAGCAGAACTCATCTCAGAAGAGGATCTGGCAGCAAATGATATCCTGGATT
ACAAGGATGACGACGATAAGGTTTAA

Protein Sequence:	>RC218154 representing NM_018991 Red=Cloning site Green=Tags(s)
-------------------	--

MIFSMLRKLPKVTCRDVLP EIRAICIEEIGCWMQSYSTFLTDSYLKYIGWTLHDKHREVRVKCVKALKG
LYGNRDLTARLELFTGRFKDWMVSMIVDREYSVAVEAVRLLILILKLFYPECEIRTMGGREQRQSPGAQR
TFFQLLLSFFVESKLDHHAAYLVDNLWDCAGTQLKDWEGLTSLLEKLDQSTCHMEPGPGTFHLLG

TRTRPLEQKLI SEEDLAANDILDYKDDDDKV



[View online »](#)

Chromatograms: https://cdn.origene.com/chromatograms/mk8016_a11.zip

Restriction Sites: SgfI-MluI

Cloning Scheme:



ACCN: NM_018991

ORF Size: 615 bp

OTI Disclaimer: The molecular sequence of this clone aligns with the gene accession number as a point of reference only. However, individual transcript sequences of the same gene can differ through naturally occurring variations (e.g. polymorphisms), each with its own valid existence. This clone is substantially in agreement with the reference, but a complete review of all prevailing variants is recommended prior to use. [More info](#)

OTI Annotation: This clone was engineered to express the complete ORF with an expression tag. Expression varies depending on the nature of the gene.

Components: The ORF clone is ion-exchange column purified and shipped in a 2D barcoded Matrix tube containing 10ug of transfection-ready, dried plasmid DNA (reconstitute with 100 ul of water).

Reconstitution Method:

1. Centrifuge at 5,000xg for 5min.
2. Carefully open the tube and add 100ul of sterile water to dissolve the DNA.
3. Close the tube and incubate for 10 minutes at room temperature.
4. Briefly vortex the tube and then do a quick spin (less than 5000xg) to concentrate the liquid at the bottom.
5. Store the suspended plasmid at -20°C. The DNA is stable for at least one year from date of shipping when stored at -20°C.

RefSeq: [NM_018991.2](#), [NP_061864.2](#)

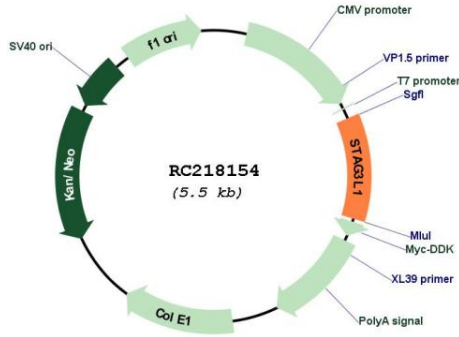
RefSeq Size: 1826 bp

RefSeq ORF: 617 bp

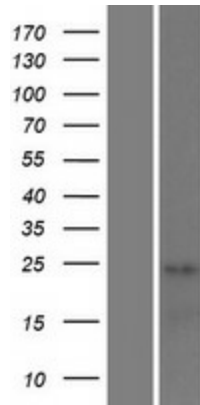
Locus ID: 54441

Cytogenetics: 7q11.23
 MW: 23.6 kDa

Product images:



Circular map for RC218154



Western blot validation of overexpression lysate (Cat# [LY412829]) using anti-DDK antibody (Cat# [TA50011-100]). Left: Cell lysates from untransfected HEK293T cells; Right: Cell lysates from HEK293T cells transfected with RC218154 using transfection reagent MegaTran 2.0 (Cat# [TT210002]).