

## Product datasheet for **RC218153**

### **RAB3IP (NM\_022456) Human Tagged ORF Clone**

#### **Product data:**

Product Type:	Expression Plasmids
Product Name:	RAB3IP (NM_022456) Human Tagged ORF Clone
Tag:	Myc-DDK
Symbol:	RAB3IP
Synonyms:	RABIN3; RABIN8
Mammalian Cell Selection:	Neomycin
Vector:	pCMV6-Entry (PS100001)
E. coli Selection:	Kanamycin (25 ug/mL)



[View online »](#)

**ORF Nucleotide Sequence:**

>RC218153 representing NM\_022456  
 Red=Cloning site Blue=ORF Green=Tags(s)

TTTTGTAATACGACTCACTATAGGGCGGCCGGAATTCGTCGACTGGATCCGGTACCGAGGAGATCTGCC  
 GCC**GCGATCGCC**

ATGGCTAATGATCCCTTGAAGGCTTCCATGAAGTAAACCTTGCTTCACCTACTTCTCCGGACCTTCTTG  
 GTGTGATGAATCAGGAACCAAGAGCAGACTACCTACCAAGTGCATCTACCGCCACACCCTTCAGC  
 TTTATCCTCTGTACCTATCCAGGCAATGCATTAGATGTTTCTGAACTTCTACACAACCCGTGATTCA  
 TCCCCAGACGTTTAAATGTGCGGAAATCTAGTATCAGCTTTCATGTTACAGACCCAGCCCCTTGCT  
 CTACCTCTGGAGTCACAGCTGGATTAACATAAATAACTACAAGAAAGGACAATAATGCAGAGAGAGA  
 GTTTTTACAGGGTCTACTATAACAGAGGCTTGCATGGCAGTGATGATATTTTTGGGTTGAGTACTGAT  
 AGTCTGTCTCGTTACGAAGCCCATCTGTTTTGGAAGTTAGAGAAAAGGGCTATGAACGATTAAGAAG  
 AACTCGAAAAGCTCAGAGGAACTGAAGTTAAAAGATGAAGAATGTGAGAGGCTTCAAAGTGGCAGA  
 TCAACTTGGACAGGAATTGGAAGAACTCACAGCTAGTCTATTTGAGGAAGCTCATAAAATGGTGAGAGAA  
 GCAAAATCAAGCAGGCAACAGCAGAAAAACAGCTAAAAGAAGCAACAGGAAAAATTGATGACTTCAAG  
 CTGAAGTAGCTGCATTGAAGACACTTGTATTGTCCAGTCTCCAACATCACCTACGAGGAGCCTTTGCC  
 AGGTGGAAGACACCTTTTAAAAAGGGCATACAAGAAATAAAAGCACAAGCAGTGCTATGAGTGGCAGT  
 CATCAGGACCTCAGTGTGATACAGCCAATTGTAAGAACTGCAAGAGGGCTGACTTATCCTTGTATAATG  
 AATCCGATTGTGGAAGGATGAGCCACAATGGACAGGACGTGTCCTTTCTTAGACAAAACTACCAGGA  
 AGATATCTTCCATGTTAACATTCTCAAAAAGTGAAGTGGCTTCAGCTGTTCTGGAGGCTGTGAAAAAC  
 AATACTTAAGCATTGAACCAGTGGGATTACAACCTATCCGGTTTGTGAAAGCTTCTGCAGTTGAATGCG  
 GAGGACCAAAAAAATGTGCTCTCACTGGCCAGAGTAAGTCTGTAACACAGAATAAATTAGGGGACTC  
 AAGCAACTATTATTATTTTCTCTTTTGCAGATACAGGATCACTTCTGTATGTAACCTTTTTTACATAC  
 ATTCGATACATTACGAGGGACTCGTGAACAGCAGGATGTTGATCAGATGTTTTGGGAGGTTATGCAGT  
 TGAAAAAGAGATGTCATTGGCAAAGCTGGGTTATTTCAAAGAGGAACTC

**ACGCGT**ACGCGGCCGCTCGAGCAGAACTCATCTCAGAAGAGGATCTGGCAGCAATGATATCCTGGATT  
 ACAAGGATGACGACGATAAGGTTTAA

**Protein Sequence:**

>RC218153 representing NM\_022456  
 Red=Cloning site Green=Tags(s)

MANDPLEGFHEVNLASPTSPDLLGVYESGTQEQTSPSVIYRPHPSALSSVPIQANALDVSELPTQPVYS  
 SPRRLNCAEISSISFHVTDPAPCSTSGVTAGLTKLTTRKDNNAEREFLLQGATITEACDGSDDIFGLSTD  
 SLSRLRSPSVLEVREKGYERLKEELAKAQRELKLDDEECERLSKVRDQLGQEELEELTASLFEEAHKVVRE  
 ANIKQATAEKQLKEAQKIDVLQAEVAALKTLVLSSSPTSPTQEPLPGGKTPFKKGHTRNKSTSSAMSGS  
 HQDLSVIQPIVKDCKEADLSLYNEFRLWKDEPTMDRTCPFLDKIYQEDIFPCLTFKSELASAVLEAVEN  
 NTLSEIPVGLQPIRFVKASAVECGGPKKCALTGQSKSCKHRIKLGSSNYYYISPFCRYRITSVCNFFTY  
 IRYIQQLVKQDQVDFWVEMQLRKEMSLAKLGYFKEEL

**TR**TRPLEQKLISEEDLAANDILDYKDDDDKV

**Chromatograms:**

[https://cdn.origene.com/chromatograms/mk6486\\_d07.zip](https://cdn.origene.com/chromatograms/mk6486_d07.zip)

**Restriction Sites:**

Sgfl-Mlul

**Cloning Scheme:**

Cloning sites used for ORF Shutting:



\* The last codon before the Stop codon of the ORF

**ACCN:** NM\_022456

**ORF Size:** 1380 bp

**OTI Disclaimer:** The molecular sequence of this clone aligns with the gene accession number as a point of reference only. However, individual transcript sequences of the same gene can differ through naturally occurring variations (e.g. polymorphisms), each with its own valid existence. This clone is substantially in agreement with the reference, but a complete review of all prevailing variants is recommended prior to use. [More info](#)
**OTI Annotation:** This clone was engineered to express the complete ORF with an expression tag. Expression varies depending on the nature of the gene.

**Components:** The ORF clone is ion-exchange column purified and shipped in a 2D barcoded Matrix tube containing 10ug of transfection-ready, dried plasmid DNA (reconstitute with 100 ul of water).

**Reconstitution Method:**

1. Centrifuge at 5,000xg for 5min.
2. Carefully open the tube and add 100ul of sterile water to dissolve the DNA.
3. Close the tube and incubate for 10 minutes at room temperature.
4. Briefly vortex the tube and then do a quick spin (less than 5000xg) to concentrate the liquid at the bottom.
5. Store the suspended plasmid at -20°C. The DNA is stable for at least one year from date of shipping when stored at -20°C.

**RefSeq:** [NM\\_022456.5](#)
**RefSeq Size:** 1855 bp

**RefSeq ORF:** 1383 bp

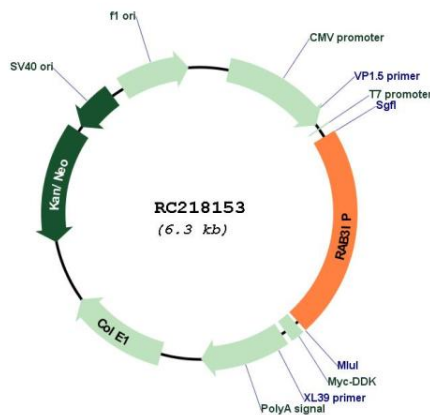
**Locus ID:** 117177

**UniProt ID:** [Q96QF0](#)
**Cytogenetics:** 12q15

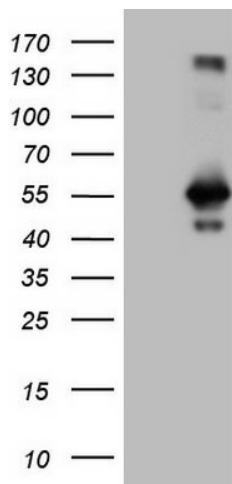
**MW:** 51.1 kDa

**Gene Summary:** Guanine nucleotide exchange factor (GEF) which may activate RAB8A and RAB8B. Promotes the exchange of GDP to GTP, converting inactive GDP-bound Rab proteins into their active GTP-bound form. Mediates the release of GDP from RAB8A and RAB8B but not from RAB3A or RAB5. Modulates actin organization and promotes polarized transport of RAB8A-specific vesicles to the cell surface. Together with RAB11A, RAB8A, the exocyst complex, PARD3, PRKCI, ANXA2, CDC42 and DNMBP promotes transcytosis of PODXL to the apical membrane initiation sites (AMIS), apical surface formation and lumenogenesis.[UniProtKB/Swiss-Prot Function]

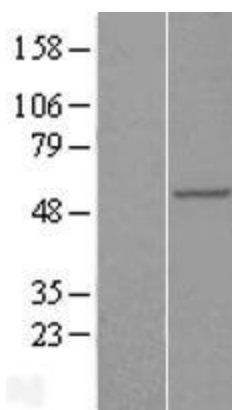
**Product images:**



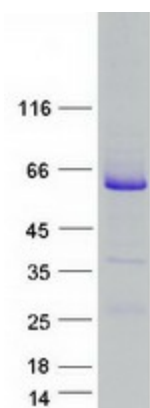
Circular map for RC218153



HEK293T cells were transfected with the pCMV6-ENTRY control (Cat# [PS100001], Left lane) or pCMV6-ENTRY RAB3IP (Cat# RC218153, Right lane) cDNA for 48 hrs and lysed. Equivalent amounts of cell lysates (5 ug per lane) were separated by SDS-PAGE and immunoblotted with anti-RAB3IP (Cat# [TA808960])(1:2000). Positive lysates [LY411671] (100ug) and [LC411671] (20ug) can be purchased separately from OriGene.



Western blot validation of overexpression lysate (Cat# [LY411671]) using anti-DDK antibody (Cat# [TA50011-100]). Left: Cell lysates from untransfected HEK293T cells; Right: Cell lysates from HEK293T cells transfected with RC218153 using transfection reagent MegaTran 2.0 (Cat# [TT210002]).



Coomassie blue staining of purified RAB3IP protein (Cat# [TP318153]). The protein was produced from HEK293T cells transfected with RAB3IP cDNA clone (Cat# RC218153) using MegaTran 2.0 (Cat# [TT210002]).