

Product datasheet for **RC218152**

Staufen (STAU1) (NM_001037328) Human Tagged ORF Clone

Product data:

Product Type:	Expression Plasmids
Product Name:	Staufen (STAU1) (NM_001037328) Human Tagged ORF Clone
Tag:	Myc-DDK
Symbol:	Staufen
Synonyms:	PPP1R150; STAU
Mammalian Cell Selection:	Neomycin
Vector:	pCMV6-Entry (PS100001)
E. coli Selection:	Kanamycin (25 ug/mL)



[View online »](#)

ORF Nucleotide Sequence:

>RC218152 representing NM_001037328
 Red=Cloning site Blue=ORF Green=Tags(s)

TTTTGTAATACGACTCACTATAGGGCGGCCGGAATTCGTCGACTGGATCCGGTACCGAGGAGATCTGCC
 GCC**GCGATCGCC**

ATGAAACTTGAAAAAACAATGTATAAGCCTGTTGACCCTACTCTCGGATGCAGTCCACCTATAACT
 ACAACATGAGAGGAGGTCTTATCCCCGAGGACTTTTACCATTTCAGTTCCACCTTTACTTTATCA
 AGTGGAACCTTCTGTGGGAGGACAGCAATTTAATGGCAAAGGAAAGACAAGACAGGCTGCCAAACACGAT
 GCTGCTGCCAAAGCGTTGAGGATCTGCAGAATGAGCCCCTGCCAGAGAGGCTGGAGGTGAATGGAAGAG
 AATCCGAAGAAGAAAATCTCAATAAATCTGAAATAAGTCAAGTGTGTTGAGATTGCACTTAAACGGAACCT
 GCCTGTGAATTCGAGTCTTCCCTCTGAAACAGGTGGCCCGGGAGAGTGGCCACCCACATGAAGAAC
 TTTGTACCAAGTTCGGTTGGGGAGTTGTGGGGGAAGGTGAAGGGAAAAGCAAGAAGATTTCAAAGA
 AAAATGCCGCCATAGCTGTTCTTGAGGAGCTGAAGAAGTTACCGCCCCTGCCTGCAGTTGAACGAGTAAA
 GCCTAGAATCAAAAAGAAAACAAAACCCATAGTCAAGCCACAGACAAGCCAGAATATGGCCAGGGGATC
 AATCCGATTAGCCGACTGGCCCAGATCCAGCAGGCAAAAAGGAGAAGGAGCCAGAGTACACGCTCTCA
 CAGAGCGAGGCCCTCCCGCGCCGACAGGGAGTTGTGATGCAGGTGAAGTTGGAAACCACACTGCAGAAGG
 AACGGGCACCAACAAGAAGGTGGCCAAGCGCAATGCAGCCGAGAACATGCTGGAGATCCTTGGTTTCAA
 GTCCCGCAGGCGCAGCCACAAACCCGCACTCAAGTCAGAGGAGAAGACACCCATAAAGAAACCAGGGG
 ATGGAAGAAAAGTAACCTTTTTTGAACCTGGCTCTGGGGATGAAAATGGGACTAGTAATAAAGAGGATGA
 GTTCAGGATGCCTTATCTAAGTCATCAGCAGCTGCCTGCTGGAATTTCTCCATGGTGCCGAGGTGCC
 CAGGCTGTAGGAGTTAGTCAAGGACATCACACCAAGATTTTACCAGGGCAGCTCCGAATCTGCCAAGG
 CCACGGTAACTGCCATGATAGCCCGAGAGTTGTGTATGGGGGCACCTCGCCACAGCCGAGACCATTTT
 AAAGAATAACATCTCTCAGGCCACGTACCCCATGGACCTCTCAGGAGACCCTCTGAGCAACTGGACTAT
 CTTTCCAGAGTCCAGGGATTCCAGGTTGAATACAAGACTTCCCAAAAAACAAGAACGAATTTGTAT
 CTCTTATCAATTGCTCCTCTCAGCCACCTCTGATCAGCCATGGTATCGGCAAGGATGTGGAGTCTGCCA
 TGATATGGCTGCGCTGAACATCTTAAAGTTGCTGTCTGAGTTGGACCAACAAAGTACAGAGATGCCAAGA
 ACAGGAAACGGACCAATGTCTGTGTGGGAGGTGC

ACGCGTACGCGGCCGCTCGAGCAGAAACTCATCTCAGAAGAGGATCTGGCAGCAAATGATATCCTGGATT
 ACAAGGATGACGACGATAAGGTTTAA

Protein Sequence:

>RC218152 representing NM_001037328
 Red=Cloning site Green=Tags(s)

MKLGKKPMYKVPDPYSRMQSTYNYNMRGGAYPPRYFYPFPVPLLYQVELSVGGQQFNGKGRQAAKHD
 AAKALRILQNEPLPERLEVNGRESEENLNKSEISQVFEIALKRNLVNFESFPLKQVARESGPPHMKN
 FVTKVSVGEFVGEGERGSKKISKKNAAIAVLEELKKLPLPAVERVKPRIKKTKPIVKPQTSPEYQGI
 NPISRLAQIQAKKEKEPEYTLTTERGLPRRREFVMQVKVGNHTAEGTGNKKVAKRNAENMLEILGFK
 VPQAQPTKPAKSEKTPIKKPGDGRKVTFFEPGSGDENGTSNKEDEFRMPYLSHQQLPAGILPMVPEVA
 QAVGVSQGHHTKDFTRAAPNPAKATVTAMIARELLYGGTSPETAETILKNNISSGHVPHGPLTRPSEQLDY
 LSRVQGFQVEYKDFPKNNKNEFVSLINCSSQPPLISHGIGKDVESCHDMAALNILKLLSELQQSTEMPR
 TGNPMSVCGRC

TRTRPLEQKLISEEDLAANDILDYKDDDDKV

Chromatograms:

https://cdn.origene.com/chromatograms/mg3866_b01.zip

Restriction Sites:

SgfI-MluI

Cloning Scheme:


ACCN: NM_001037328

ORF Size: 1506 bp

OTI Disclaimer: The molecular sequence of this clone aligns with the gene accession number as a point of reference only. However, individual transcript sequences of the same gene can differ through naturally occurring variations (e.g. polymorphisms), each with its own valid existence. This clone is substantially in agreement with the reference, but a complete review of all prevailing variants is recommended prior to use. [More info](#)

OTI Annotation: This clone was engineered to express the complete ORF with an expression tag. Expression varies depending on the nature of the gene.

Components: The ORF clone is ion-exchange column purified and shipped in a 2D barcoded Matrix tube containing 10ug of transfection-ready, dried plasmid DNA (reconstitute with 100 ul of water).

- Reconstitution Method:**
1. Centrifuge at 5,000xg for 5min.
 2. Carefully open the tube and add 100ul of sterile water to dissolve the DNA.
 3. Close the tube and incubate for 10 minutes at room temperature.
 4. Briefly vortex the tube and then do a quick spin (less than 5000xg) to concentrate the liquid at the bottom.
 5. Store the suspended plasmid at -20°C. The DNA is stable for at least one year from date of shipping when stored at -20°C.

RefSeq: [NM_001037328.2](#), [NP_001032405.1](#)

RefSeq Size: 3540 bp

RefSeq ORF: 1509 bp

Locus ID: 6780

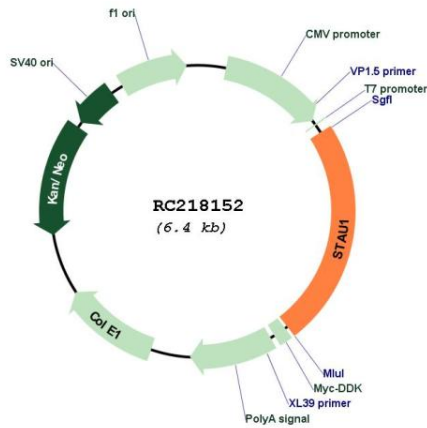
UniProt ID: [O95793](#)

Cytogenetics: 20q13.13

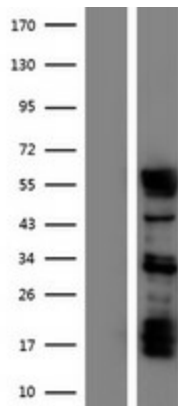
MW: 55.5 kDa

Gene Summary: Staufen is a member of the family of double-stranded RNA (dsRNA)-binding proteins involved in the transport and/or localization of mRNAs to different subcellular compartments and/or organelles. These proteins are characterized by the presence of multiple dsRNA-binding domains which are required to bind RNAs having double-stranded secondary structures. The human homologue of staufen encoded by STAU, in addition contains a microtubule-binding domain similar to that of microtubule-associated protein 1B, and binds tubulin. The STAU gene product has been shown to be present in the cytoplasm in association with the rough endoplasmic reticulum (RER), implicating this protein in the transport of mRNA via the microtubule network to the RER, the site of translation. [provided by RefSeq, Apr 2020]

Product images:



Circular map for RC218152



Western blot validation of overexpression lysate (Cat# [LY421948]) using anti-DDK antibody (Cat# [TA50011-100]). Left: Cell lysates from untransfected HEK293T cells; Right: Cell lysates from HEK293T cells transfected with RC218152 using transfection reagent MegaTran 2.0 (Cat# [TT210002]).