

Product datasheet for RC218146

Laminin (LAMC3) (NM_006059) Human Tagged ORF Clone

Product data:

Product Type:	Expression Plasmids
Product Name:	Laminin (LAMC3) (NM_006059) Human Tagged ORF Clone
Tag:	Myc-DDK
Symbol:	Laminin
Synonyms:	OCCM
Mammalian Cell Selection:	Neomycin
Vector:	pCMV6-Entry (PS100001)
E. coli Selection:	Kanamycin (25 ug/mL)
ORF Nucleotide Sequence:	>RC218146 representing NM_006059 Red=Cloning site Blue=ORF Green=Tags(s)

TTTTGTAATACGACTCACTATAGGGCGGCCGGAATTCGTCGACTGGATCCGGTACCGAGGAGATCTGCCGCCGCGATCGCC

ATGGCGCGGCTGCGCTTCTGCTGGGGCTGGCGCTGCTGGCACCGCGGGCGGCCGCGGGCATGGGCG
CGTGCTATGACGGCGCAGGGCGCCCGCAGCGCTGCCTGCCGGTGTTCGAGAACCGGGCGTTTGGGCGGT
CGCCAGGCTCGCACACGTGCGGCAGCCCGCCGAGGACTTCTGTCCCCACGTGGGCGCCGCGGGCGCG
GGGCTCATTGCCAGCGCTGCGACGCCCGCCAGCCCCAGCGCCACCACAACGCCTCTACCTCACCAGCT
TCCACAGCCAGGACGAGAGCACCTGGTGGCAGAGCCCGTCCATGGCCTTCGGCGTGCAGTACCCACCTC
GGTCAACATCACCTCCGCCTAGGGAAGGCTTATGAGATCACGTATGTGAGGCTGAAGTTCCACACCACT
CGCCCTGAGAGCTTTGCCATCTACAAGCGCAGCCGCGCCGACGGCCATGGGAGCCCTACCAGTTTACA
GCGCTCTGCCAGAAGACCTACGGCCGGCCGAGGGCCAGTACCTGCGCCCCGGCGAGGACGAGCGGT
GGCCTTCTGCACCTCTGAGTTTACGCGACATCTCCCCGCTGAGTGGCGGCAACGTGGCCTTCTCCACCTG
GAGGGCCGGCCAGCGCTACAACCTCGAGGAGAGCCCTGGGCTGCGAGGAGTGGTCAACAGCACCGAAC
TCCTCATCTCTAGACCGGCTCAACACGTTTGGGACGACATCTTAAGGACCCCAAGGTGCTCCAGTC
CTACTATTATGCCGTGTCCGACTTCTGTGGGCGGCAAGTGAAGTGAACGGGCATGCCAGCGAGTGC
GGCCCCGAGTGGCAGGCCAGTTGGCCTGCCGGTGCCAGCACAAACACCACCGGCACAGACTGTGAGCGCT
GCCTGCCCTTCTCCAGGACCGCCGTTGGGCCCGGGCACCGCGAGGCTGCCACGAGTGTCTGCCCTG
CAACTGCAAGTGGCCGCTCCGAGGAATGCACGTTTGTGCGGAGCTCTTCCGACGACAGGCCACGGCGGG
CGCTGTCAACACTGCCGTGACCACAGCTGGGCCACTGTGAGCGCTGTGAGGAGATTTCTATCACT
GGGACCCGCGGATGCCATGCCAGCCCTGTGACTGCCAGTGGCAGGCTCCCTACACCTCCAGTGCAGTGA
CACAGGCACCTGCGCCTGCAAGCCACGGTACTGGCTGGAAGTGTGACCGCTGTCTGCCGGGTTCCAC
TCGCTCAGTGAGGGAGGCTGCAGACCCTGCACTGCAATCCCGTGGCAGCCTGGACACCTGTGACCCCG
GCAGTGGGCGCTGCCCTGCAAAGAGAATGTGGAAGGCAACCTATGTGACAGATGTGCCCGGGGACCTT
TAACCTGCAGCCCAATCCAGCTGGCTGCAGCAGCTGTTTCTGCTATGCCACTCAAGGTGTGCGCG



[View online >](#)

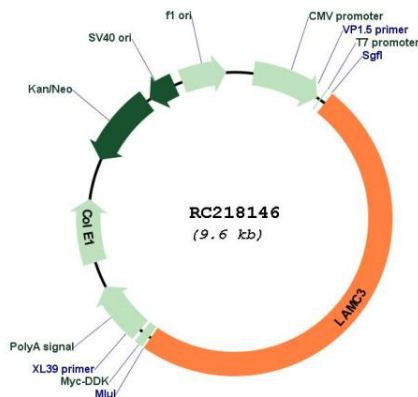
TCCACTGCCAGTTCAGGTGCATCACATCCTCAGCGATTTCCACCAGGGAGCCGAAGGCTGGTGGGCCA
 GAAGTGTGGGGGCTCTGAGCACCCCAACAATGGAGCCAAATGGGGTCTCTGAGCCAGAAGACGA
 GGAGGAGCTCACAGCACCAGAGAAGTTCCTGGGAGACCAGCGTTTACAGTATGGGCAGCCCTCATACTG
 ACCTTCCGGGTGCCCCCGGGGACTCCCCACTCCCTGTACAGTGTAGGCTGGAAGGGACAGGCTTGGCCC
 TGTCCCTGAGGCACTCTAGCCTGTCTGGCCCCAGGATGCCGGGCATCCCAGGGAGGTAGAGCTCAGGTT
 CCACCTGCAGGAGACCTCCGAGGACGTGGCCCCCTCCACTGCCCCCTTCCACTTCCAGCGGCTCCTCGCC
 AACCTGACCAGCCTCCGCTCCGCGTCAGTCCCAGCCCCAGCCCTGCCGGTCCAGTGTCTCTGACTGAGG
 TCCGGCTCACATCCGCCCGGCCAGGGCTTCCCGGCCAGCCTCCTGGGTGGAGATTTGTTTATGTCCAC
 TGGCTACACGGGCCAGTTCTGTGAATCCTGTGCTCCGGGATACAAGAGGGAGATGCCACAGGGGGTCCC
 TATGCCAGCTGTGTCCCCTGCACCTGTAACCAGCATGGCACCTGTGACCCCAACACAGGGATCTGTGTCT
 GCAGCCACCATACCGAGGGCCCATCCTGTGAACGCTGTTTCCAGGTTTCTATGGCAACCCTTTCGCGGG
 CCAAGCCGACGACTGCCAGCCCTGTCCCTGCCCTGGCCAGTGGCCTGTACGACCATCCCAGAGAGCCGG
 GAGGTGGTGTGTACCCACTGCCCCCGGGCCAGAGAGGGCGGCTGTGAGGTCTGTGATGATGGCTTTT
 TTGGGGACCCGCTGGGGCTTTTGGGCACCCAGCCCTGCCACCAGTGCAGTGTAGCGGGAACGTGGA
 CCCAATGCCGTGGGCAACTGTGACCCCTGTCTGGCCACTGCCTGCGCTGCCTGCACAACACCACGGGT
 GACCACTGTGAGCACTGTGAGGAAGGCTTCTACGGGAGCGCCCTGGCCCTCGACCCGCAGACAAATGCA
 TGCCCTGCAGCTGTACCCACAGGGCTCCGTGAGTGTGAGCAGATGCCCTGCAGCCAGTGACAGGCAATG
 CTCTGCCTGCCTCATGTGACTGCACGGGACTGCAGCCGCTGCTACCCCTGGCTTCTTCGACCTCCAGCCT
 GGGAGGGGCTGCCGGAGCTGCAAGTGTACCCACTGGGCTCCCAGGAGGACCAGTGCCATCCCAAGACTG
 GACAGTGCACCTGCCGCCAGGTGTACAGGCCAGGCCTGTGACAGGTGCCAGTGGGTTTCTTCGGCTT
 CTCCATCAAGGGTGCCTGGGCTGCAGGTGCTCCCACTGGGCGTGCCTCGGCCAGTGCCACGAGAAC
 GGCACATGCGTGTGCAGGCTGGCTTCGAGGGCTACAAATGTGACCGCTGCCACGACAACCTTCTTCTCA
 CGGCAGACGGCACACACTGCCAGCAATGTCCGCTGTACGCCCTGGTGAAGGAGGAGCCAGCCAAAGT
 GAAGGCCAGACTGACTTTGACGGAGGGGTGGCTCCAAGGGTCCGACTGTGGCAGTCCCTGGGGACCACTA
 GACATTCTGCTGGGAGAGGCCCAAGGGGGACGTCTACAGGGCCATCCTGCTTCCAGGGGCTCGGG
 AAGCCTTCTGGAGCAGATGATGAGCCTCGAGGGTGTGTCAAGGCCGCCGGGAGCAGTGCAGAGGCT
 GAACAAGGGTGCCGCTGTGCCAGGCCGATCCAGAAGACCTGCACCCAGCTGGCAGACTGGAGGCA
 GTGCTGGAGTCTCGGAAGAGGAGATTCTGCATGCAGTGCATTCTCGCGTCTCTGGAGATTCTCAGG
 AAGGTCCCAGTACGCCGACCAATGGAGCCACTGGCCACAGAGGCCGCTGCCCTCGCCAGGAGCCACAG
 AGACACCCGCCAAGATCGCAGCCACTGCTTGGAGGGCCCTGCTCGCCTCCAACACCAGTACGCGCTT
 CTCTGGAATCTGCTGGAGGGAAGGGTGGCCCTAGAGACCCAGCGGACCTGGAGGACAGGTACCAGGAGG
 TCCAGGGGCCAGAAAGCACTGAGGACGGCTGTGGCAGAGGTGCTGCCTGAAGCGGAAAGCGTGTGGC
 CACCGTGCAGCAAGTTGGCGCAGATACAGCCCCGTACCTGGCCTTGTGGCTTCCCGGGAGCTCTGCCT
 CAGAAGTCCCAGGCTGAAGACCTGGGCCTGAAGGCCAAGGCCCTGGAGAAGACAGTTGCATCATGGCAGC
 ACATGGCCACTGAGGCTGCCCGAACCTCCAGACTGCTGCCAGGCGACGCTACGGCAAACAGAACCCTT
 CACAAAGCTGCACCAGGAGGCCAGAGCCGCCCTGACCCAGGCTTCTCATCTGTCCAGGCTGCGACAGTG
 ACTGTCTATGGGAGCCAGGACTCTGCTGGCTGATCTGGAAGGAATGAAGTGCAGTTTCCCGGCCAAGG
 AACAGCGGGCATTGCAGAGGAAGGCAGACTCCGTGAGTGCAGACTCCTTGCAGACAGGAAAGAAGAC
 CAAGCAGGCGGAGAGGATGCTGGGAAACGCGGCCCTTTCTCCAGTGCCAAGAAGAAGGGCAGAGAA
 GCAGAGGTGTTGGCCAAGGACAGTGCAGGCTTCCAGGCTTGGTGGAGGAGCGGAAACAGGCGCACCC
 GCCGTGCCAGCAGGCTCACAGCCAGACGCAAGCCACGCTCCAACAGGCGTCCCAGCAGGTGCTGGCGTC
 TGAAGCACGCAGACAGGAGCTGGAGGAAGCTGAGCGGGTGGGTGCTGGGCTGAGCGAGATGGAGCAGCAG
 ATCCGGGAATCGCGTATCTCACTGGAGAAGGACATCGAGACCTTGTGAGAGCTGCTTGCAGGCTGGGGT
 CGCTGGACACCCATCAAGCCCCAGCCAGGCCCTGAACGAGACTCAGTGGGCACTAGAACGCTGAGGCT
 GCAGCTGGGCTCCCCGGGTCTTGCAGAGGAACTCAGTCTGCTGGAGCAGGAATCCCAGCAGCAGGAG
 CTGCAGATCCAGGGCTTCGAGAGTGACCTCGCCGAGATCCGCGCCGACAAACAGAACCTGGAGGCCATTC
 TGCACAGCCTGCCGAGAACTGTCCAGCTGGCAG

ACGCGTACGCGGCCGCTCGAGCAGAACTCATCTCAGAAGAGGATCTGGCAGCAAATGATATCCTGGATT
 ACAAGGATGACGACGATAAGGTTTAA

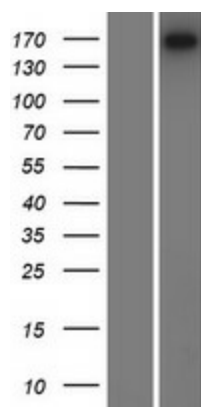
ORF Size:	4725 bp
OTI Disclaimer:	The molecular sequence of this clone aligns with the gene accession number as a point of reference only. However, individual transcript sequences of the same gene can differ through naturally occurring variations (e.g. polymorphisms), each with its own valid existence. This clone is substantially in agreement with the reference, but a complete review of all prevailing variants is recommended prior to use. More info
OTI Annotation:	This clone was engineered to express the complete ORF with an expression tag. Expression varies depending on the nature of the gene.
Components:	The ORF clone is ion-exchange column purified and shipped in a 2D barcoded Matrix tube containing 10ug of transfection-ready, dried plasmid DNA (reconstitute with 100 ul of water).
Reconstitution Method:	<ol style="list-style-type: none">1. Centrifuge at 5,000xg for 5min.2. Carefully open the tube and add 100ul of sterile water to dissolve the DNA.3. Close the tube and incubate for 10 minutes at room temperature.4. Briefly vortex the tube and then do a quick spin (less than 5000xg) to concentrate the liquid at the bottom.5. Store the suspended plasmid at -20°C. The DNA is stable for at least one year from date of shipping when stored at -20°C.
RefSeq:	NM_006059.4
RefSeq Size:	5100 bp
RefSeq ORF:	4728 bp
Locus ID:	10319
UniProt ID:	Q9Y6N6
Cytogenetics:	9q34.12
Protein Pathways:	ECM-receptor interaction, Focal adhesion, Pathways in cancer, Small cell lung cancer
MW:	171.23 kDa

Gene Summary:

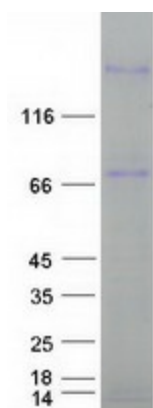
Laminins, a family of extracellular matrix glycoproteins, are the major noncollagenous constituent of basement membranes. They have been implicated in a wide variety of biological processes including cell adhesion, differentiation, migration, signaling, neurite outgrowth and metastasis. Laminins are composed of 3 non identical chains: laminin alpha, beta and gamma (formerly A, B1, and B2, respectively) and they form a cruciform structure consisting of 3 short arms, each formed by a different chain, and a long arm composed of all 3 chains. Each laminin chain is a multidomain protein encoded by a distinct gene. Several isoforms of each chain have been described. Different alpha, beta and gamma chain isomers combine to give rise to different heterotrimeric laminin isoforms which are designated by Arabic numerals in the order of their discovery, i.e. alpha1beta1gamma1 heterotrimer is laminin 1. The biological functions of the different chains and trimer molecules are largely unknown, but some of the chains have been shown to differ with respect to their tissue distribution, presumably reflecting diverse functions in vivo. This gene encodes the gamma chain isoform laminin, gamma 3. The gamma 3 chain is most similar to the gamma 1 chain, and contains all the 6 domains expected of the gamma chain. It is a component of laminin 12. The gamma 3 chain is broadly expressed in skin, heart, lung, and the reproductive tracts. In skin, it is seen within the basement membrane of the dermal-epidermal junction at points of nerve penetration. Gamma 3 is also a prominent element of the apical surface of ciliated epithelial cells of lung, oviduct, epididymis, ductus deferens, and seminiferous tubules. The distribution of gamma 3-containing laminins along ciliated epithelial surfaces suggests that the apical laminins are important in the morphogenesis and structural stability of the ciliated processes of these cells. [provided by RefSeq, Aug 2011]

Product images:


Circular map for RC218146



Western blot validation of overexpression lysate (Cat# [LY416892]) using anti-DDK antibody (Cat# [TA50011-100]). Left: Cell lysates from untransfected HEK293T cells; Right: Cell lysates from HEK293T cells transfected with RC218146 using transfection reagent MegaTran 2.0 (Cat# [TT210002]).



Coomassie blue staining of purified LAMC3 protein (Cat# [TP318146]). The protein was produced from HEK293T cells transfected with LAMC3 cDNA clone (Cat# RC218146) using MegaTran 2.0 (Cat# [TT210002]).