

Product datasheet for RC218144

C1orf172 (KDF1) (NM_152365) Human Tagged ORF Clone

Product data:

Product Type:	Expression Plasmids
Product Name:	C1orf172 (KDF1) (NM_152365) Human Tagged ORF Clone
Tag:	Myc-DDK
Symbol:	C1orf172
Synonyms:	C1orf172; ECTD12
Mammalian Cell Selection:	Neomycin
Vector:	pCMV6-Entry (PS100001)
E. coli Selection:	Kanamycin (25 ug/mL)
ORF Nucleotide Sequence:	>RC218144 representing NM_152365 Red=Cloning site Blue=ORF Green=Tags(s)

TTTTGTAATACGACTCACTATAGGGCGGCCGGAATTCGTCGACTGGATCCGGTACCGAGGAGATCTGCC
GCC**CGATCGCC**

ATGCCCGCCCTGGACACCCCGCCAGCATCTGGGCCTCCACGCTTGGGACCGTGGGAGCGGCCAACAG
AGCTATGTCTGGAGACATATGATAAACACCTCAGCCCCACCAAGCCGCGCACCCGTAGACCAGACCC
CAAGGACCCTGGCCACCATGGGCCAGAGAGCATTACCTTCATCTCTGGCTCTGCTGAGCCGGCCCTTGAG
TCCCCACCTGCTGCCTGCTCTGGCGACCCTGGGTGTGGGAGTGGTGCCGGGCTGCCTTCTGCTCCGCC
GCTGCCGGGATTGCCTCCAGCGCTGTGGAGCCTGTGTGCGGGGATGCAGCCCTGCCTGTCTACTGAGGA
CTCCACTGAGGGGACTGCTGAAGCCAAGTGGGCCAAGGAGCACAATGGAGTGCCCCAGCCCTGATCGT
GCACCCCGCCAGCCGCGGGATGGCCAGCGGCTCAAGTCAACCATGGGCAGCAGCTTCAGCTACCCCGATG
TTAAGCTCAAAGGCATCCCTGTGTATCCCTACCGAGGGCCACCTCCCCAGCCCTGATGCGGACTCCTG
CTGCAAGGAGCCACTGGCCGATCCCCACCCATGCGACACAGCCTGCCAGCACCTTTGCCAGTAGTCTCT
CGTGGCTCCGAGGAGTACTATTCTTTCCATGAGTCGGACCTGGACCTGCCGAGATGGGCAGTGGCTCCA
TGAGCTGGCCAAGTGCACATCAGACACTGTGTTCTGGAGAAGACCAGTAAGATCTCGGACCTTATCAGC
AGCATCAGCAGGACTACCACCTGGATGAGCAGGATGCTGAGGGCCGCTGGTACGCGGCATCATTGCGA
TTAGTACCCGAAAAGAGCCGTGCTCGCCACAGACCTCGGAGGGTCTGTTCAACTCGGGCTGCTGCCCAAC
CGCTGCTGCCCTGACAGTGGCCATGAGACCATGGTGGGCTCAGGTCTCAGCCAGGATGAGCTGACAGTG
CAGATCTCCAGGAGACGACTGCAGATGCCATCGCCGGAAGCTGAGGCCTTATGGAGCTCCAGGTACC
CAGCAAGCCATGACTCATCTTCCAGGGCACCGACACAGACTCGTCGGGGCACCCCTTGCTCCAGGTGTA
CTGC

ACGCGTACGCGGCCGCTCGAGCAGAACTCATCTCAGAAGAGGATCTGGCAGCAAATGATATCCTGGATT
ACAAGGATGACGACGATAAGGTTTAA



[View online »](#)

Reconstitution Method:

1. Centrifuge at 5,000xg for 5min.
2. Carefully open the tube and add 100ul of sterile water to dissolve the DNA.
3. Close the tube and incubate for 10 minutes at room temperature.
4. Briefly vortex the tube and then do a quick spin (less than 5000xg) to concentrate the liquid at the bottom.
5. Store the suspended plasmid at -20°C. The DNA is stable for at least one year from date of shipping when stored at -20°C.

RefSeq: [NM_152365.3](#)

RefSeq Size: 1785 bp

RefSeq ORF: 1197 bp

Locus ID: 126695

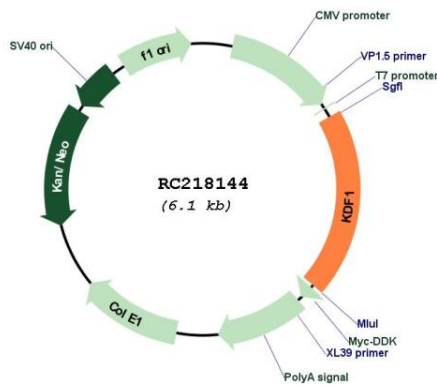
UniProt ID: [Q8NAX2](#)

Cytogenetics: 1p36.11

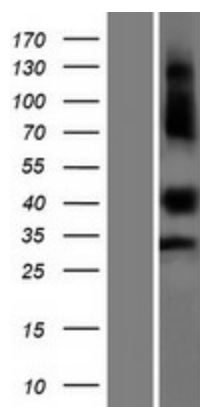
MW: 43.5 kDa

Gene Summary: Plays a role in the regulation of the epidermis formation during early development. Required both as an inhibitor of basal cell proliferation and a promoter of differentiation of basal progenitor cell progeny (By similarity).[UniProtKB/Swiss-Prot Function]

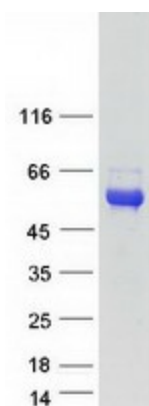
Product images:



Circular map for RC218144



Western blot validation of overexpression lysate (Cat# [LY407614]) using anti-DDK antibody (Cat# [TA50011-100]). Left: Cell lysates from untransfected HEK293T cells; Right: Cell lysates from HEK293T cells transfected with RC218144 using transfection reagent MegaTran 2.0 (Cat# [TT210002]).



Coomassie blue staining of purified KDF1 protein (Cat# [TP318144]). The protein was produced from HEK293T cells transfected with KDF1 cDNA clone (Cat# RC218144) using MegaTran 2.0 (Cat# [TT210002]).