

Product datasheet for RC218143

SNX26 (ARHGAP33) (NM_052948) Human Tagged ORF Clone

Product data:

Product Type:	Expression Plasmids
Product Name:	SNX26 (ARHGAP33) (NM_052948) Human Tagged ORF Clone
Tag:	Myc-DDK
Symbol:	SNX26
Synonyms:	NOMA-GAP; SNX26; TCGAP
Mammalian Cell Selection:	Neomycin
Vector:	pCMV6-Entry (PS100001)
E. coli Selection:	Kanamycin (25 ug/mL)
ORF Nucleotide Sequence:	>RC218143 representing NM_052948 Red=Cloning site Blue=ORF Green=Tags(s)

TTTTGTAATACGACTCACTATAGGGCGGCCGGAATTCGTCGACTGGATCCGGTACCGAGGAGATCTGCC
GCC**CGATCGCC**

ATGGTGGCAGCAGCACTGACAGCCTGGATGGCCAGGGGAGGGCTCGGTGCAGCCTCTACCCACTGCTG
GGGGGCCAGTGTGAAGGGGAAGCCTGGGAAGAGGCTCTCAGCTCCTCGAGGCCCTTCCCGCGGTGGC
TGACTGCGCCATTTCCACTACGAGAACGTTGACTTTGGCCACATTCAGCTCCTGCTGTCTCCAGACCGT
GAAGGGCCAGCCTCTCTGGAGAGAATGAGCTGGTGTTCGGGGTGCAGGTGACCTGTGAGGGCCGTTCT
GGCCGGTCTCCGGAGTTACGATGACTTTCGTTCCCTGGATGCCACCTCCACCGGTGCATATTTGACCG
GAGGTTCTCCTGCCTCCGGAGCTTCCCCCGCCCCGAGGGTGCAGGGCTGCCAGATGCTGGTGCCA
CTGCTGCTGCAGTACCTGGAGACTGTGAGGACTGGTGGACAGTAACCTCAACTGCGGGCTGTGCTCA
CCTGGATGGAGCTGGACAATCACGGCCGGCAGTCTCCTCAGTGAGGAGGCGTCACTCAATATCCCTGC
AGTGGCGGCCGCCATGTGATCAAACGGTATACAGCCAGGCGCCAGATGAGCTGTCTTTGAGGTGGGA
GACATTGTCTCGGTGATCGACATGCCACCCACAGAGGATCGGAGCTGGTGGCGGGCAAGCGAGGCTTCC
AGGTCGGGTTCTTCCCAGTGAGTGTGTGGAACCTTACAGAGCGGCCAGGTCCGGGCTGAAGCGGA
TGCCGATGGCCCCCATGTGGCATCCCGGCTCCCAGGGTATCTCGTCTCTGACCTCAGCTGTGCCACGG
CCTCGTGGGAAGCTGGCCGGCTGCTCCGACCTTCATGCGCTCCCGCCCTTCTCGGAGCGGCTGCGGG
AGCGGGGAATCCTGCGACAGAGGGTGTGGCTGCGATCTTGGCGAGCACCTCAGCAACTCAGGCCAGGA
TGTGCCCCAGGTGCTGCGCTGCTGCTCCGAGTTATTGAGGCCACGGGGTGGTGGATGGATCTACCGG
CTCTCAGGCGTGTCTTCCAACATCCAGAGGCTTCGGCACGAGTTTACAGTGAGAGGATCCCGAGCTGT
CTGGCCCTGCATTCCTGCAGGACATCCACAGCGTGTCTCCCTCTGCAAGCTCTACTTCCGAGAGCTTCC
GAACCCTCTGCTCACCTACCAGCTCTATGGGAAGTTTCAAGTGGAGCCATGTGAGTGCCTGGGAGGAGGAG
CGTCTGGTGGGGTGCACGATGTATCCAGCAGCTGCCCCACCACATTACAGGACCCTGGAGTACCTGC
TGAGGCACCTGGCCGCATGGCGAGACACAGTCCAACACCAGCATGCATGCCCGCAACCTGGCCATTGT
CTGGGCACCAACCTGCTACGGTCCATGGAGCTGGAGTCAAGTGGGAATGGGTGGCGGGCGGCTCCGG



[View online »](#)

GAAGTTCGGGTGCAGTCCGGTGGTGGAGTTTCTGCTCACCCATGTGGACGTCCTGTTACGCGACACCT
TCACCTCCGCCGGCCTCGACCCTGCAGGCCGCTGCCTGCTCCCCAGGCCCAAGTCCCTTGCGGGCAGCTG
CCCCTCCACCCGCTGCTGACGCTGGAGGAAGCCAGGCACGCACCCAGGGCCGGCTGGGGACGCCACG
GAGCCACAACCTCCAAGGCCCGCCCTCACCTGCGGAAAGGAGGAAAGGGGAGAGGGGAGAAGCAGC
GGAAGCCAGGGGGCAGCAGCTGGAAGACGTTCTTTGACTGGGCCGGGGCCCACTGTCCCTCGAAAGAA
GCCCTGCCCTGGCTGGGGGCACCCGTGCCACCCGAGCCTTCAGGCAGCAGACCCGACACCGTCACA
CTGAGATCTGCCAAGAGCGAGGAGTCTCTGTCATCGCAGGCCAGCGGGGCTGAACGTCTGGGGGCTGGGG
GAGCACCTGCCTCAGCCACCCCAACACCAGCTCTCAGCCCCGGCCGGAGCCTGCGCCCCATCTCATACC
CCTGCTGCTGCGAGGAGCCGAGGCCCGCTGACTGACGCCTGCCAGCAGGAGATGTGAGCAAGCTCCGG
GGAGCCCAGGGCCACTCGTCTGATATGGAGTCAACTGCCACCCCTCCCTGTCTCTCTGCGCC
CTGGGGGTGCCACCCCGCCCTAAGAACCAGCAGCCTCATGGCCCTGGCCCTGGCTGAGCGGGC
TCAGCAGTGGCCGAGCAACAGAGCCAGCAGGAGTGTGGGGCACCCACCTGCTTCCAATCCCTTTC
CACCGCTCGTGTCTCTGGAGTGGCGGGGAGCCCTGGGGACCTCAGGGAGTGGGCCACCTCCAAC
CCCTAGCACACCCGGTGCCTGGTCCCGGACCCCACTACTACCAAGGCAACAAAGTGATGGGAG
CCTGCTGAGGAGCCAGCGGCCATGGGGACCTCAAGGAGGGGACTCCGAGCCCTGCCAGGTGAGTCC
CAGCTCAGGGCAGGTGGCGGGGGCAGGGATGCGCCAGAGGCAGCAGCCAGTCCCATGTTCTGTCCCT
CACAGTTCTACCCCGGCTTCTTCTCCCCAGCCCCAGGGAGTGCCTGCCACCTTCTCGGGTCCC
CAAGCCAGGCTTGATACCCCTGGGCCCCCATCCTTCCAGCCAGTTCAGCCAGTCTGGAGGAGC
TCTCTGGGCCCCCTGCACCACTCGACAGGGGAGAGAACCTGTACTATGAGATCGGGGCAAGTGAGGGT
CCCCCTATTCTGGCCCCACCCGCTCCTGGAGTCCCTTTGCTCCATGCCCCCGACAGGCTCAATGCCTC
CTACGGCATGCTTGCCAATCACCCCACTCCACAGTCCCCGACTTCTGCTCAGTACCCGCCAGCC
CCCTCCTGCTTTCCCTGACCACCTGGCTACTCAGCCCCAGCACCCTGCTCGGGCCCTACACCGC
CTGAGCCCCTCTACGTCAACCTAGCTCTAGGGCCAGGGTCCCTCACCTGCCTTCTCTCTCTTTC
CCCTCCTGCCACCCCGAAGCGTTAGATCCCGGTCCCCAGTCCCCGCCTTCCCAGAAACAACGG
GCACCCTGGGGACCCCGTACCCCTCATAGGGTGCAGGGTCCCTGGGGCCCTCCTGAGCCTCTCTGCTCT
ACAGGGCAGCCCCGACGCTACGGAAGGGGGGGCAGCTCCACCGAGGGTCTTGTACAGAAATGGAGG
GCAAAGAGGGGAGGGGGTGGTCCCCACCCCTTACCCACTCCAGCTGGTCCCTCCACTCTGAGGGC
CAGACCCGAAGCTACTGC

ACGCGTACGCGGCCGCTCGAGCAGAAACTCATCTCAGAAGAGGATCTGGCAGCAATGATATCCTGGATT
ACAAGGATGACGACGATAAGGTTTAA

Protein Sequence: >RC218143 representing NM_052948
Red=Cloning site Green=Tags(s)

MVARSTDSL DGPGE GSVQPLPTAGGPSVKGKPGKRLSAPRGPF PRLADCAHFHYENVDFGHIQLLLSPDR
 EGPSLSGENELVFGVQVTCQGRSWPVLRSYDDFRSLDAHLHRCIFDRRF SCLPELPPPPEGARAAQMLVP
 LLLQYLET L SGLVDSNLNCGPVL TWELDNHGRRLLLSEEASLNIPAVAAAHVIKRYTAQAPDEL SFEVG
 DIVSVIDMPPTEDRSWWRGKRGFQVGFPPSECVELF TERPGPGLKADADGPPCGIPAPQGISLTSVPR
 PRGKLAGLLRRTFMRSRPSRQRLRQRGILRQRVFGCDLGEHLSNSGQDVPQVLRCCSEF IEAHGVVDGIYR
 LSGVSSNIQRLRHEFDSERIPELSGPAFLQDIHSVSSLCKLYFREL PNPLLTYQLYGFSEAMSVPGEEE
 RLVRVHDIQQLPPPHYRTLEYLLRHLARMARHSANTS MHARNLAI VWAPNLLRSMELESVGMGAAAFR
 EVRVQSVVVEFLLTHVDVLFSDTFTSAGLDPAGRCLLPRPKSLAGS CPSTRLLTLEE AQARTQGR LGTPT
 EPTTPKAPASPAERRKGERGEKQRKPGGSSWKTF FALGRGPSVPRKKPLPWLGGTRAPPQPSGSRPDTVT
 LRSKSEESLSSQASGAELLGAGGAPASATPTPALSPGRSLRPHLIPLLLRGAEAPLTDACQEQEMCKLR
 GAQGPLGPDMESLPPPPLSLLRPGGAPPPPKNPARLMALALAEAAQVAEQSQEQCGGTPPASQSPF
 HRSLSLEVGGEPLGTSGSGPPPNSLAHPGAWVPGPPPYLPRQQSDGSLLSQRPMGTSRRGLRGP AQVSA
 QLRAGGGGRDAPEAAAQSPCSVPSQVPTPGFFSPAPRECLPPFLGVPKGLYPLGPPSFQPS SPAPVWRS
 SLGPPAPLDRGENLYYEIGASEGSPYSGPTRSWSPFRSMPPDRLNASYGMGLQSPPLHRSPDFLLSYPPA
 PSCFPDHLGYSAPQHPARRPTPEPLVYNLALGPRGSPASSSSSSPPAHPRSRSDPGPPVPRLPQKQR
 APWGPRTPHRVPGWGPPEPLLLYRAAPPAYGRGGELHRGSLYRNGGQRGEGAGPPPPYPTPSWSLHSEG
 QTRSYC

TRTRPLEQKLISEEDLAANDILDYKDDDDKV

Chromatograms: https://cdn.origene.com/chromatograms/mk8015_g03.zip

Restriction Sites: SgfI-MluI

Cloning Scheme:

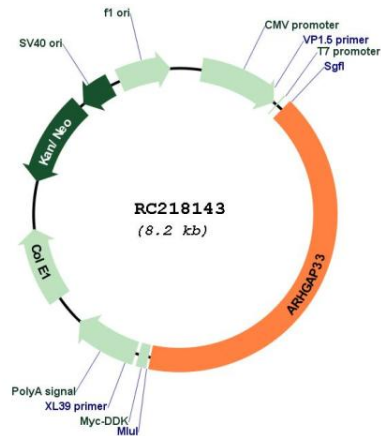


ACCN: NM_052948

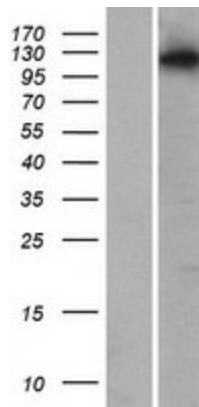
ORF Size: 3378 bp

OTI Disclaimer:	The molecular sequence of this clone aligns with the gene accession number as a point of reference only. However, individual transcript sequences of the same gene can differ through naturally occurring variations (e.g. polymorphisms), each with its own valid existence. This clone is substantially in agreement with the reference, but a complete review of all prevailing variants is recommended prior to use. More info
OTI Annotation:	This clone was engineered to express the complete ORF with an expression tag. Expression varies depending on the nature of the gene.
Components:	The ORF clone is ion-exchange column purified and shipped in a 2D barcoded Matrix tube containing 10ug of transfection-ready, dried plasmid DNA (reconstitute with 100 ul of water).
Reconstitution Method:	<ol style="list-style-type: none">1. Centrifuge at 5,000xg for 5min.2. Carefully open the tube and add 100ul of sterile water to dissolve the DNA.3. Close the tube and incubate for 10 minutes at room temperature.4. Briefly vortex the tube and then do a quick spin (less than 5000xg) to concentrate the liquid at the bottom.5. Store the suspended plasmid at -20°C. The DNA is stable for at least one year from date of shipping when stored at -20°C.
Note:	Plasmids are not sterile. For experiments where strict sterility is required, filtration with 0.22um filter is required.
RefSeq:	NM_052948.4
RefSeq Size:	3859 bp
RefSeq ORF:	3381 bp
Locus ID:	115703
UniProt ID:	O14559
Cytogenetics:	19q13.12
MW:	120.9 kDa
Gene Summary:	This gene encodes a member of the sorting nexin family. Members of this family contain a phox (PX) domain, which is a phosphoinositide binding domain, and are involved in intracellular trafficking. Alternative splice variants encoding different isoforms have been identified in this gene. [provided by RefSeq, Feb 2010]

Product images:



Circular map for RC218143



Western blot validation of overexpression lysate (Cat# [LY409372]) using anti-DDK antibody (Cat# [TA50011-100]). Left: Cell lysates from untransfected HEK293T cells; Right: Cell lysates from HEK293T cells transfected with RC218143 using transfection reagent MegaTran 2.0 (Cat# [TT210002]).