

Product datasheet for **RC218138**

CPSF6 (NM_007007) Human Tagged ORF Clone

Product data:

Product Type:	Expression Plasmids
Product Name:	CPSF6 (NM_007007) Human Tagged ORF Clone
Tag:	Myc-DDK
Symbol:	CPSF6
Synonyms:	CFIM; CFIM68; CFIM72; HPBRII-4; HPBRII-7
Mammalian Cell Selection:	Neomycin
Vector:	pCMV6-Entry (PS100001)
E. coli Selection:	Kanamycin (25 ug/mL)



[View online »](#)

ORF Nucleotide Sequence:

>RC218138 representing NM_007007
 Red=Cloning site Blue=ORF Green=Tags(s)

TTTTGTAATACGACTCACTATAGGGCGGCCGGGAATTCGTCGACTGGATCCGGTACCGAGGAGATCTGCC
 GCC**CGGATCGCC**

ATGGCGGACGGCTGGACCACATAGACATTTACGCGGATGTCGGCGAAGAGTTCAACCAGGAAGCTGAAT
 ATGGTGGGCATGATCAGATAGATTTGTATGACGATGTCATATCTCCATCTGCAAATAATGGAGATGCCCC
 AGAAGACCGAGATTACATGGATACTCTCCACCAACTGTTGGTATGATGTGGGTAAGGAGCAGCACCA
 AATGTTGTCTATACATATACTGAAAGAGAATTGCATTATATATTGAAATCTAACATGGTGACAACAG
 ATGAAGACTTAACTGAAGCAGTTCATTCTTTGGGAGTAAATGATATTTGGAGATAAAATTTTTTAAAA
 TCGGGCAAATGGCCAGTCAAAGGGTTTGCCTTGTGGTGTGGATCTGAAGCATCTTCAAAAAAGTTA
 ATGGATCTGTTACCTAAAAGAGAACTTCATGGTCAGAATCCTGTTGTAACCCATGCAATAAACAGTTCC
 TGAGTCAATTTGAAATGCAGTCCAGGAAAACACACAATCAGGACAAATGTCTGGGAAGGTAAGCTGG
 TCCTCCAGGAGGCAGTCCCGTGCAGCATTTCCACAAGTGGTAGAGGACGGGGCCGTTTTCCAGGGGCT
 GTTCTGGTGGGACAGATTTCTGGGCCAGCAGGACCAGGAGGGCCACCCACCTTTTCCAGCTGGAC
 AGACTCCACCACGTCCACCTTAGTCTCCAGGCCACCTGGTCCACCAGGTCCTCCACCTCCTGGTCA
 GGTTCGCTCCTCCTAGCTGGGCTCCTAATCGAGGAGATCGCCCTCCACCACAGTCTTTTTCT
 GGACAACCTTTTGGGCAGCCTCCATTGGGTCCACTTCTCCTGGCCCTCCACCTCCAGTTCAGGGCTACG
 GCCCCCTCCTGGCCACCACCTCCACAACAGGGACCCTCCACCTCCAGGCCCTTTCCACCTCGTCC
 ACCCGTCCACTTGGGCCACCCCTTACACTAGCTCCTCCTCCGCATCTTCTGGACCCTCCAGGTGCC
 CCACCCGAGTCCGCATGTGAACCCAGCTTTCTTCCACCAACTAACAGTGGCATGCCTACATCAG
 ATAGCCGAGTCCACCACCAACAGATCCATATGGGCGACCTCCACCATATGATAGGGGTGACTATGGCCC
 CCCTGGAAGGAAATGGATACTGCAAGAACGCCATTGAGTGAAGCTGAATTTGAAGAAATCATGAATAGA
 AATAGGGCAATCTCAAGCAGTGCTATTTGAGAGCTGTGTCTGATGCCAGTGTGGTATTATGGGAGTG
 CTATTGAGACTGGTAACTGCAATTTCTTAATTAACAATCCAAAGTATCTGCTGATGATCGTTGCAA
 AGTTCTTATTAGTCTTTGCAAGATTGCCTTCATGGAATTGAGTCCAAGTCTTATGGTCTGGATCAAGA
 CGTGAACGATCAAGAGAGAGGGACCATAGTAGATCACGAGAAAAGAGTCGACGTCATAAATCCCGTAGTA
 GAGACCGTCATGACGATTATTACAGAGAGAGAAGCAGAGAACGAGAGAGGCACCGGGATCGTGACCGAGA
 CCGTGACCGAGAGCGTGACCGAGAGCGCAATATCGTCATCGT

ACGCGTACGCGGCCGCTCGAGCAGAAACTCATCTCAGAAGAGGATCTGGCAGCAAATGATATCCTGGATT
 ACAAGGATGACGACGATAAGGTTTAA

Protein Sequence:

>RC218138 representing NM_007007
 Red=Cloning site Green=Tags(s)

MADGVDHIDIYADVGEFNEAEYGGHDQIDLYDDVISPSANNGDAPEDRDYMDLPPPTVGDVVGKGAAP
 NVVYTYTGKRIALYIGNLTWTTDEDL TEAVHSLGVNDILEIKFFENRANGQSKGFALVGVGSEASSKLL
 MDLLPKRELHQNPVVTPCNKQFLSQFEMQSRKTTQSGQMSGEGKAGPPGGSSRAAFPQGGRRGRFPGA
 VPGGDRFPGPAGPGPPPPFAGQTPRPPLGPPGPPPPGPPPPGQVLPPLAGPPNRGDRPPPPVLPF
 GQPFQPPPLGPLPPPPPPVPGYPPPPPPPPQGGPPPPPGPPRPPGPLGPPLTLAPPHLPGPPPGA
 PPPAPHVNPAPFPPTNSGMPTSDSRGPPPTDPYGRPPPYDRGDYPPGREMDTARTPLSEAEFEEIMNR
 NRAISSAISRAVSDASAGDYGSAIETLVTAISLIKQSKVSADDRCKVL ISSLQDCLHGIESKSYGSGSR
 RERSRERDHSRSREKSRRHKSRSRDRHDDYYRERSRERHRDRDRDRDRERDREREYRHR

TRTRPLEQKLI SEEDLAANDILDYKDDDDKV

Chromatograms:

https://cdn.origene.com/chromatograms/mk8115_h01.zip

Restriction Sites:

Sgfl-MluI

Cloning Scheme:


ACCN: NM_007007

ORF Size: 1653 bp

OTI Disclaimer: The molecular sequence of this clone aligns with the gene accession number as a point of reference only. However, individual transcript sequences of the same gene can differ through naturally occurring variations (e.g. polymorphisms), each with its own valid existence. This clone is substantially in agreement with the reference, but a complete review of all prevailing variants is recommended prior to use. [More info](#)

OTI Annotation: This clone was engineered to express the complete ORF with an expression tag. Expression varies depending on the nature of the gene.

Components: The ORF clone is ion-exchange column purified and shipped in a 2D barcoded Matrix tube containing 10ug of transfection-ready, dried plasmid DNA (reconstitute with 100 ul of water).

- Reconstitution Method:**
1. Centrifuge at 5,000xg for 5min.
 2. Carefully open the tube and add 100ul of sterile water to dissolve the DNA.
 3. Close the tube and incubate for 10 minutes at room temperature.
 4. Briefly vortex the tube and then do a quick spin (less than 5000xg) to concentrate the liquid at the bottom.
 5. Store the suspended plasmid at -20°C. The DNA is stable for at least one year from date of shipping when stored at -20°C.

RefSeq: [NM_007007.3](#)

RefSeq Size: 6630 bp

RefSeq ORF: 1656 bp

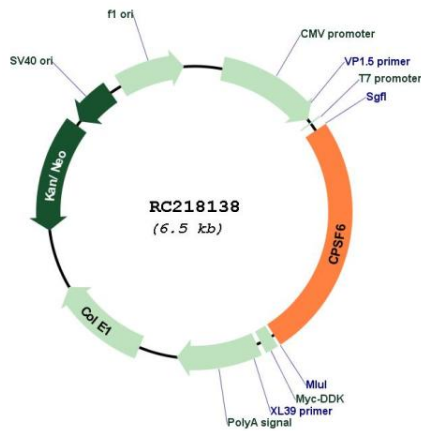
Locus ID: 11052

UniProt ID: [Q16630](#)

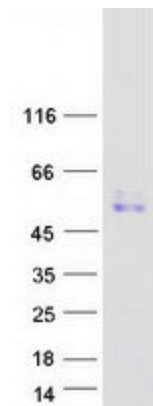
Cytogenetics: 12q15
Domains: RRM
MW: 59.2 kDa

Gene Summary: The protein encoded by this gene is one subunit of a cleavage factor required for 3' RNA cleavage and polyadenylation processing. The interaction of the protein with the RNA is one of the earliest steps in the assembly of the 3' end processing complex and facilitates the recruitment of other processing factors. The cleavage factor complex is composed of four polypeptides. This gene encodes the 68kD subunit. It has a domain organization reminiscent of spliceosomal proteins. [provided by RefSeq, Jul 2008]

Product images:



Circular map for RC218138



Coomassie blue staining of purified CPSF6 protein (Cat# [TP318138]). The protein was produced from HEK293T cells transfected with CPSF6 cDNA clone (Cat# RC218138) using MegaTran 2.0 (Cat# [TT210002]).