

Product datasheet for **RC218131**

SPON1 (NM_006108) Human Tagged ORF Clone

Product data:

Product Type:	Expression Plasmids
Product Name:	SPON1 (NM_006108) Human Tagged ORF Clone
Tag:	Myc-DDK
Symbol:	SPON1
Synonyms:	f-spondin; VSGP/F-spondin
Mammalian Cell Selection:	Neomycin
Vector:	pCMV6-Entry (PS100001)
E. coli Selection:	Kanamycin (25 ug/mL)



[View online »](#)

ORF Nucleotide Sequence:

>RC218131 representing NM_006108
 Red=Cloning site Blue=ORF Green=Tags(s)

TTTTGTAATACGACTCACTATAGGGCGGCCGGAATTCGTCGACTGGATCCGGTACCGAGGAGATCTGCC
 GCC**CGGATCGCC**

ATGAGGCTGTCCCGCGCCCTGAAGCTGAGCCGGACTCCGGCACTGCTGGCCCTGGCGTGCCCTGG
 CCGCGGCCCTGGCTTCTCCGACGAGACCCTGGACAAAGTGCCCAAGTCAGAGGGCTACTGCAGCCGAT
 CCTGCGCGCCAGGGCACGCGGCCGAGGGCTACACCGAGTTCAGCCTCCGCGTGGAGGGCGACCCCGAC
 TTCTACAAGCCGGGAACAGCTACCGCGTAACACTTTCAGCTGCTCCTCCCTCTACTTCAGAGGATTCA
 CATTAATTGCCCTCAGAGAGAACAGAGAGGGTGATAAGGAAGAAGACCATGCTGGGACCTTCAGATCAT
 AGACGAAGAAGAACTCAGTTTATGAGCAATTGCCCTGTTGCAGTCACTGAAAGCACTCCACGGAGGAGG
 ACCCGGATCCAGGTGTTTTGGATAGCACCACGCGGGAACAGGTGCGTGATTCTGAAGCCAGCATCG
 TACAAAAACGCATTATTTATTTTCAAGATGAGGGCTCTCTGACCAAGAACTTTGTGAACAAGATCCAC
 ATTTGATGGGGTACTGACAAACCATCTTAGACTGCTGTGCCTGCGGAACTGCCAAGTACAGACTCACA
 TTTTATGGGAATTGGTCCGAGAAGACACCCAAAGGATTACCCTCGTCGGGCCAACCACTGGTCTGCGA
 TCATCGGAGGATCCCACTCCAAGAATTATGTAAGTGGGAATATGGAGGATATGCCAGCGAAGGCGTCAA
 ACAAGTTGCAGAATTGGGCTCACCCGTGAAAATGGAGGAAGAAATTCGACAACAGAGTGATGAGGTCCTC
 ACCGTCATCAAAGCCAAAGCCAGTGGCCAGCCTGGCAGCCTCTCAACGTGAGAGCAGCACCTTCAGCTG
 AATTTTCCGTGGACAGAACGCGCCATTTAATGTCTTCTGACCATGATGGGCCCTAGTCCCGACTGGAA
 CGTAGGCTTATCTGCAGAAGATCTGTGCACCAAGGAATGTGGCTGGTCCAGAAGGTGGTGAAGACCTG
 ATTCCTGGGACGCTGGCACCGACGCGGGTGACCTATGAGTCACCCAACAACCCACCATTTCCCGAGG
 AGAAAATCCGGCCCTGACCAGCCTGGACCATCTCAGAGTCTTTCTATGACCCAGGGTGGTCCAT
 CACTCAAGTAGCCAGAGTTGTATCGAGAGAATCGCACGGAAGGGTGAACAATGCAATATTGTACCTGAC
 AATGTGATGATATTGTAGCTGACCTGGCTCCAGAAGAGAAGATGAAGATGACACCCCTGAAACCTGCA
 TCTACTCCAAGTGGTCCCATGTTCCGCTGCAGCTCCTCCACCTGTGACAAAGGCAAGAGGATGCGACA
 GCGCATGCTGAAAGCACAGCTGGACCTCAGCGTCCCTGCCCTGACACCCAGGACTTCCAGCCCTGCATG
 GGCCCTGGCTGCAGTGACGAAGACGGCCACCTGCACCATGTCCGAGTGGATCACCTGGTGCCTGCA
 GCATCTCTGCGGCATGGGCATGAGGTCCCGGAGAGGTATGTGAAGCAGTTCGCGGAGGACGGCTCCGT
 GTGCACGCTGCCACTGAGGAAACGGAGAAGTGCACGGTCAACGAGGAGTGTCTCCAGCAGCTGCCTG
 ATGACCGAGTGGGCGAGTGGGACGAGTACAGCGCCACCTGCGGCATGGGCATGAAGAAGCGGCACCGCA
 TGATCAAGATGAACCCCGCAGATGGCTCCATGTGCAAAGCCGAGACATCACAGGCAGAGAAGCGCATGAT
 GCCAGAGTGCCACACCATCCCATGCTTGTGCTCCCATGGTCCGAGTGGAGTGACTGCAGCGTGACCTGC
 GGAAGGGCATGCGAACCAGCAGCGGATGCTCAAGTCTCTGGCAGAAGTGGAGACTGCAATGAGGATC
 TGGAGCAGGTGGAGAAGTGCATGCTCCCTGAATGCCCATTTGACTGTGAGCTCACCGAGTGGTCCAGTG
 GTCGGAATGTAACAAGTCATGTGGGAAAGGCCACGTGATTCGAACCCGGATGATCCAAATGGAGCCTCAG
 TTTGGAGGTGCACCCTGCCAGAGACTGTGCAGCGAAAAAGTGCCGCATCCGAAAATGCCTTCGAAATC
 CATCCATCCAAAAGCTACGCTGGAGGGAGGCCGAGAGAGCCGGGAGTGAGCAGCTGAAGGAAGATC
 TGAAGGGGAGCAGTTCACAGTTGTAGGATGCGCCCATGGACGGCTGGTCAAGATGCACCAAACTGTGC
 GGAGGTGGAATTCAGGAACGTTACATGACTGTAAGAAGAGATTCAAAGCTCCAGTTTACCAGCTGCA
 AAGACAAGAAGGAGATCAGAGCATGCAATGTTTCATCTTGT

ACGCGTACGCGGCCGCTCGAGCAGAACTCATCTCAGAAGAGGATCTGGCAGCAAATGATATCCTGGATT
 ACAAGGATGACGACGATAAGGTTTAA

Protein Sequence: >RC218131 representing NM_006108
Red=Cloning site Green=Tags(s)

MRLSPAPLKL SRTPALLALPLAAALAFSDETLDKVPKSEGYCSRILRAQGTRREGYTEFSLRVEGDPD
FYKPGTSYRVTL SAAPPSYFRGFTLIALRENREGDKEDHAGTFQIIDEEETQFMSNCPVAVTESTPRRR
TRIQVFWIAPPAGTGCVILKASIVQKRIIYFQDEGSLTKKLCEQDSTFDGVTDKPILDCCACGTAKYRLT
FYGNWSEKTHPKDYPRRANHWSAIIIGGSHSKNYVLWEYGGYASEGVKQVAELGSPVKMEEEIRQQSDEVL
TVIKAKAQWPAWQPLNVRAAPSAEF SVD RTRHLSFLTMMGSPDWNVGLSAEDLCTKECGWVQKVVQDL
IPWDAGTDSGVTYE SPNKPTIPQE KIRPLTSLDHPQSPFYDPEGGSITQVARVVIERIARKGEQCNI VPD
NVDDIVADLAPEEKDEDDTPETCIYSNWS PWSACSSSTCDKGKRMQRMLKAQLDL SVPCPDTQDFQPC M
GPGCSDDEDGPTCTMSEWITWSPCSI SCGMGMSRERYVKQFPEDGSVCTLPTEETE KCTVNEECSPSSCL
MTEWGEWDEYSATCGMGMKRHRMIKMN PADGSMCKAETSQA EKRMPECHTIPCLLSPWSEWSDCSVTC
GKGMTRQRMLKSLAELGDCNEDLEQVEK CMLPECPIDCELTEWSQWSECNKSCGKGHVIRTRMIQMEPQ
FGGAPCPETVQRKKCRIRKCLRNPSIQKLRWREARESRSEQLKEESEGEQFPGCRM RPWTAWSECTKLC
GGGIQERYMTVKKRFKSSQFTSCKDKKEIRACNVHPC

TRTRPLEQKLISEEDLAANDILDYKDDDDKV

Chromatograms: https://cdn.origene.com/chromatograms/mg2556_d02.zip

Restriction Sites: Sgfl-Mlul

Cloning Scheme:



ACCN: NM_006108

ORF Size: 2421 bp

OTI Disclaimer: The molecular sequence of this clone aligns with the gene accession number as a point of reference only. However, individual transcript sequences of the same gene can differ through naturally occurring variations (e.g. polymorphisms), each with its own valid existence. This clone is substantially in agreement with the reference, but a complete review of all prevailing variants is recommended prior to use. [More info](#)

OTI Annotation: This clone was engineered to express the complete ORF with an expression tag. Expression varies depending on the nature of the gene.

Components: The ORF clone is ion-exchange column purified and shipped in a 2D barcoded Matrix tube containing 10ug of transfection-ready, dried plasmid DNA (reconstitute with 100 ul of water).

Reconstitution Method:

1. Centrifuge at 5,000xg for 5min.
2. Carefully open the tube and add 100ul of sterile water to dissolve the DNA.
3. Close the tube and incubate for 10 minutes at room temperature.
4. Briefly vortex the tube and then do a quick spin (less than 5000xg) to concentrate the liquid at the bottom.
5. Store the suspended plasmid at -20°C. The DNA is stable for at least one year from date of shipping when stored at -20°C.

RefSeq: [NM_006108.1](#), [NP_006099.1](#)

RefSeq Size: 4755 bp

RefSeq ORF: 2424 bp

Locus ID: 10418

UniProt ID: [Q9HCB6](#)

Cytogenetics: 11p15.2

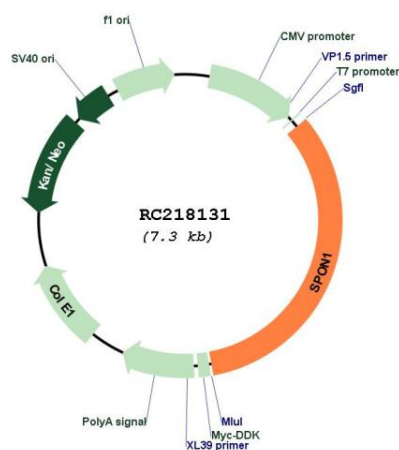
Domains: tsp_1, Reeler

Protein Families: Secreted Protein

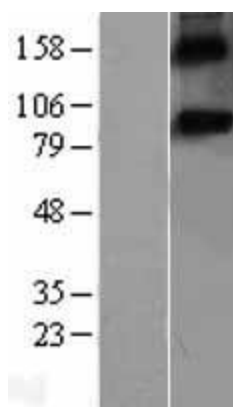
MW: 90.8 kDa

Gene Summary: Cell adhesion protein that promotes the attachment of spinal cord and sensory neuron cells and the outgrowth of neurites in vitro. May contribute to the growth and guidance of axons in both the spinal cord and the PNS (By similarity). Major factor for vascular smooth muscle cell. [UniProtKB/Swiss-Prot Function]

Product images:



Circular map for RC218131



Western blot validation of overexpression lysate (Cat# [LY401846]) using anti-DDK antibody (Cat# [TA50011-100]). Left: Cell lysates from untransfected HEK293T cells; Right: Cell lysates from HEK293T cells transfected with RC218131 using transfection reagent MegaTran 2.0 (Cat# [TT210002]).