

## Product datasheet for RC218126

### CLEC12B (NM\_205852) Human Tagged ORF Clone

#### Product data:

Product Type:	Expression Plasmids
Product Name:	CLEC12B (NM_205852) Human Tagged ORF Clone
Tag:	Myc-DDK
Symbol:	CLEC12B
Synonyms:	UNQ5782
Mammalian Cell Selection:	Neomycin
Vector:	pCMV6-Entry (PS100001)
E. coli Selection:	Kanamycin (25 ug/mL)
ORF Nucleotide Sequence:	>RC218126 representing NM_205852 Red=Cloning site Blue=ORF Green=Tags(s)

TTTTGTAATACGACTCACTATAGGGCGGCCGGAATTCGTCGACTGGATCCGGTACCGAGGAGATCTGCC  
GCC**CGATCGCC**

ATGTCTGAAGAAGTGAACATGCGACACTCACATTTAGGATTCTGCTGGAGCAAGGAATAACCGAGATG  
GAAATAACCTAAGAAAAAGAGGGCATCCAGCTCCATCTCCATTTGGCGTCATGCTGCTGGGTCTGGT  
AACTCTTGCCTGATGTTGCTGATTGGGCTGGTGACGTTGGGGATGATGTTTTGCAGATATCTAATGAC  
ATTAACCTCAGATTCAGAGAAATTGAGTCAACTTCAGAAAACCATCAACAGCAGCAGGATAACTTATCCC  
AGCAACTGGGCAACTCCAACAATTGTCCATGGAGGAGGAATTTCTCAAGTCACAGATCTCCAGTCTACT  
GAAGAGGCAGGAACAAATGGCCATCAAAGTGTGCAAGAGCTAATCATTACTTCAGACCACAGATGT  
AATCCATGTCCTAAGATGTGGCAATGGTACCAAAATAGTTGCTACTATTTTACAACAAATGAGGAGAAAA  
CCTGGGCTAACAGTAGAAAGGACTGCATAGACAAGAACTCCACCCTAGTGAAGATAGACAGTTTGGGAAGA  
AAAGGATTTTCTTATGTCACAGCCATTACTCATGTTTTCGTTCTTTTGGCTGGGATTATCATGGGACTCC  
TCTGGCAGAAGTTGGTTCTGGGAAGATGGCTCTGTTCCCTCTCCATCCTTGTACGTCTCTAACTAT

**ACGCGT**ACGCGGGCCGCTCGAGCAGAACTCATCTCAGAAGAGGATCTGGCAGCAAATGATATCCTGGATT  
ACAAGGATGACGACGATAAGGTTTAA



[View online »](#)

**Protein Sequence:** >RC218126 representing NM\_205852  
 Red=Cloning site Green=Tags(s)

MSEEVNYATLTFQDSAGARNNRDGNLKRKHPAPSPIWRHAALGLVTLCLMLLIGLVTLGMMFLQISND  
 INSDSEKLSQLQKTIQQQDNLSQLGNSNNLSMEEFLKSQISSLLKRQEQMAIKLCQELIHTSDHRC  
 NPCPKMWQWYQNSCYFFTNEEKTWANSRKDCIDKNSTLVKIDSLEEKDFLMSQPLLMSFFWLGLSWDS  
 SGRSWFWEDGSPSPSLVYSNY

TRTRPLEQKLISEEDLAANDILDYKDDDDKV

**Chromatograms:** [https://cdn.origene.com/chromatograms/ja1471\\_b08.zip](https://cdn.origene.com/chromatograms/ja1471_b08.zip)

**Restriction Sites:** SgfI-MluI

**Cloning Scheme:**



**ACCN:** NM\_205852

**ORF Size:** 696 bp

**OTI Disclaimer:** The molecular sequence of this clone aligns with the gene accession number as a point of reference only. However, individual transcript sequences of the same gene can differ through naturally occurring variations (e.g. polymorphisms), each with its own valid existence. This clone is substantially in agreement with the reference, but a complete review of all prevailing variants is recommended prior to use. [More info](#)

**OTI Annotation:** This clone was engineered to express the complete ORF with an expression tag. Expression varies depending on the nature of the gene.

**Components:** The ORF clone is ion-exchange column purified and shipped in a 2D barcoded Matrix tube containing 10ug of transfection-ready, dried plasmid DNA (reconstitute with 100 ul of water).

**Reconstitution Method:**

1. Centrifuge at 5,000xg for 5min.
2. Carefully open the tube and add 100ul of sterile water to dissolve the DNA.
3. Close the tube and incubate for 10 minutes at room temperature.
4. Briefly vortex the tube and then do a quick spin (less than 5000xg) to concentrate the liquid at the bottom.
5. Store the suspended plasmid at -20°C. The DNA is stable for at least one year from date of shipping when stored at -20°C.

**RefSeq:** [NM\\_205852.1](#), [NP\\_995324.1](#)

**RefSeq Size:** 3029 bp

**RefSeq ORF:** 699 bp

**Locus ID:** 387837

**UniProt ID:** [Q2HXU8](#)

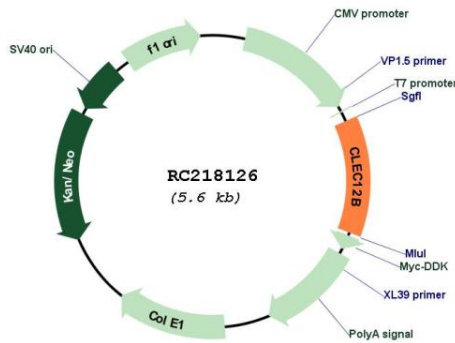
**Cytogenetics:** 12p13.2

**Protein Families:** Transmembrane

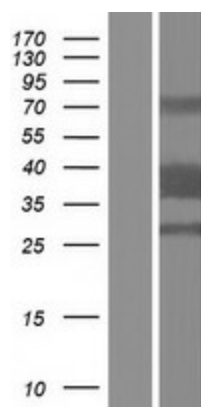
**MW:** 26.6 kDa

**Gene Summary:** Cell surface receptor that protects target cells against natural killer cell-mediated lysis. Modulates signaling cascades and mediates tyrosine phosphorylation of target MAP kinases. [UniProtKB/Swiss-Prot Function]

**Product images:**



Circular map for RC218126



Western blot validation of overexpression lysate (Cat# [LY404201]) using anti-DDK antibody (Cat# [TA50011-100]). Left: Cell lysates from untransfected HEK293T cells; Right: Cell lysates from HEK293T cells transfected with RC218126 using transfection reagent MegaTran 2.0 (Cat# [TT210002]).