

Product datasheet for **RC218122**

MLIP (NM_138569) Human Tagged ORF Clone

Product data:

Product Type:	Expression Plasmids
Product Name:	MLIP (NM_138569) Human Tagged ORF Clone
Tag:	Myc-DDK
Symbol:	MLIP
Synonyms:	C6orf142; CIP
Mammalian Cell Selection:	Neomycin
Vector:	pCMV6-Entry (PS100001)
E. coli Selection:	Kanamycin (25 ug/mL)



[View online »](#)

ORF Nucleotide Sequence:

>RC218122 representing NM_138569
 Red=Cloning site Blue=ORF Green=Tags(s)

TTTTGTAATACGACTCACTATAGGGCGGCCGGAATTCGTCGACTGGATCCGGTACCGAGGAGATCTGCC
 GCC**CGCATCGCC**

ATGGAAGCTGAAAAGCGTAAAAAAGAAGCTTATTAACAAGAATTTAGAGGAGAACTGACGGTCTCTG
 CTGGTGGTTCTGAAGCCAAACCTCTGATCTTACATTTGTCCCACTGTGAGAAGACTACCAACCCATAC
 TCAGTTGGCTGACACCTCTAAATTCCTTGTAAAATTCCAGAAGAATCAAGTGATAAGAGTCCAGAACT
 GTAATAGGTCTAAATCCAATGACTACTTGACCTTGAATGCTGGGAGCCAACAAGAGAGAGACCAAGCGA
 AATTGACTTGTCTTTCAGAGGTGAGTGAACGATTTTACAAGAAAGGGAATTCGAAGCAAACAACTTCA
 AGGGATGCAGCAAAGTGACCTCTCAAAGCTGAATATGTCCTTATTGTGGACTCCGAAGGGGAAGATGAG
 GCTGCAAGCAGAAAAGTTGAACAAGGCCCCAGGGGGATTGGCACCAGCTGTCGGCCCAAGTCTC
 TAGCTATCTCGTCCAGTCTGGTCTGTGATGTAGTGCCTCCAAAACACAGGGGACTGATCTCAAGACCTC
 ATCACATCTGAAATGCTTCATGGGATGGCCCTCAGCAAAGCATGGGCAGCAATACAAGACCAAGTCA
 AGCTACAAGGCTTTTGCAGCAATCCCTACAACACATTGCTTTTGAACAGAAGGCACTAGATGAACCAG
 CCAAGACTGAAAGTGTCTCCAAGGACAACATTAGAACCACAGTGGAGCTCTATTTCTGCACAGCT
 CAGGCAGCAAAGTGAAGAGCTCTGTGCTACCATGATAAGGTCTTACAGGATTCCTGTCTATGCATTCT
 TCTGATTCTCCTCAAGGTCCCAAGACATTGTTGGTCTGACACAGTCAAACCTCTACAACCTTTC
 CAAGAGCAGCTGGTTCGAGAAACCAATATGCAATCTCTCCTCACCATCTTACAGTATCTGAGAGTCA
 GCTGACTAAGCCTGGAGTAATTCGCCAGTACCTGTAATAATCCAGAATATTACTGAAAAAGAGGAGGAA
 GTCTATGAACCAACCTTTTCAGTAAATACTTGAAGATAACAGCGACCTTTTTCTGAACAGGATGTAA
 CAGTCCCTCCCAAGCCTGTCTCGCTCCATCCTTTATATCAGACTAACTCTATCCTCTGTAAGTCACT
 GCTGCATCCACAGACCCTCTCACATGCTGACTGTCTTGGCCAGGACCCTTCAGTCATCTGTCTTCTCC
 TTGAGTGATGAACAGGAGAATTCTCACACCCTCTCAGTCACAACGCATGCAACAAGCTGAGTCATCCAA
 TGGTGGCTATTCTGAACATGAAGCTCTTGATTCCAAAGAGCAA

ACGCGTACGCGGCCGCTCGAGCAGAAACTCATCTCAGAAGAGGATCTGGCAGCAAATGATATCCTGGATT
 ACAAGGATGACGACGATAAGGTTTAA

Protein Sequence:

>RC218122 representing NM_138569
 Red=Cloning site Green=Tags(s)

MELEKREKRSLLNKNLEEKLTVSAGGSEAKPLIFTFVPTVRRLPHTHTQLADTSKFLVKIPEESSDKSPET
 VNRSKSNLYLTLNAGSQERDQAKLTCPEVSGTILQEREFEANKLQGMQSDLFKAKEYVLIVDSEGEDE
 AASRKVEQPPGGIGTAAVRPKSLAISSSLVSDVVRPKTQGTDLKTSHPPEMLHGMAPQQKHGQQYKTKS
 SYKAFAAIPTNTLLLEQKALDEPAKTESVSKDNTLEPPVELYFPAQLRQQTEELCATIDKVLQDLSMHS
 SDSPSRPKTLGSDTVKPTTLPRAAGRETKYANLSSPSSTVSESQLTKPGVIRPVPVKSRIILLKKEE
 VYEPNPFKYLEDNSDLFSEQDVTVPKPVSLHPLYQTKLYPPAKSLLHPQTLSHADCLAPGPFSHLSFS
 LSDEQENSHTLLSHNACNKLSPMVAIPEHEALDSKEQ

TRTRPLEQKLISEEDLAANDILDYKDDDDKV

Chromatograms:

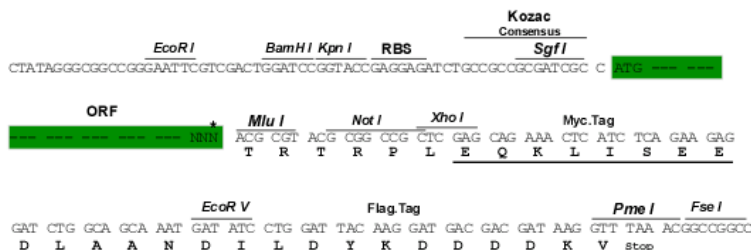
https://cdn.origene.com/chromatograms/mk8015_g07.zip

Restriction Sites:

Sgfl-Mlul

Cloning Scheme:

Cloning sites used for ORF Shutting:



* The last codon before the Stop codon of the ORF

ACCN: NM_138569

ORF Size: 1374 bp

OTI Disclaimer: The molecular sequence of this clone aligns with the gene accession number as a point of reference only. However, individual transcript sequences of the same gene can differ through naturally occurring variations (e.g. polymorphisms), each with its own valid existence. This clone is substantially in agreement with the reference, but a complete review of all prevailing variants is recommended prior to use. [More info](#)
OTI Annotation: This clone was engineered to express the complete ORF with an expression tag. Expression varies depending on the nature of the gene.

Components: The ORF clone is ion-exchange column purified and shipped in a 2D barcoded Matrix tube containing 10ug of transfection-ready, dried plasmid DNA (reconstitute with 100 ul of water).

Reconstitution Method:

1. Centrifuge at 5,000xg for 5min.
2. Carefully open the tube and add 100ul of sterile water to dissolve the DNA.
3. Close the tube and incubate for 10 minutes at room temperature.
4. Briefly vortex the tube and then do a quick spin (less than 5000xg) to concentrate the liquid at the bottom.
5. Store the suspended plasmid at -20°C. The DNA is stable for at least one year from date of shipping when stored at -20°C.

RefSeq: [NM_138569.2](#), [NP_612636.2](#)
RefSeq Size: 1740 bp

RefSeq ORF: 1377 bp

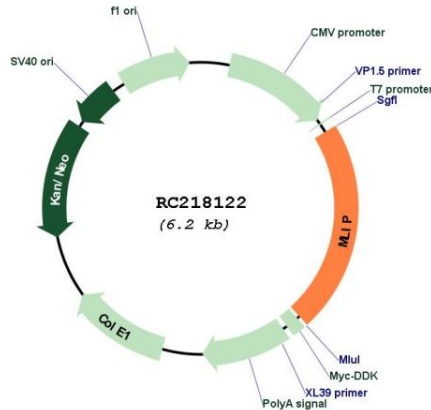
Locus ID: 90523

UniProt ID: [Q5VWP3](#)
Cytogenetics: 6p12.1

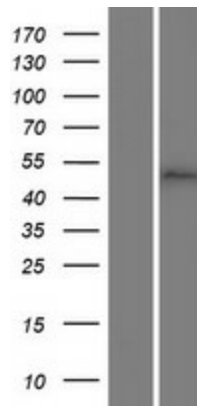
MW: 50.2 kDa

Gene Summary: Required for precocious cardiac adaptation to stress through integrated regulation of the AKT/mTOR pathways and FOXO1. Regulates cardiac homeostasis and plays an important role in protection against cardiac hypertrophy. Acts as a transcriptional cofactor, represses transactivator activity of ISL1 and MYOCD.[UniProtKB/Swiss-Prot Function]

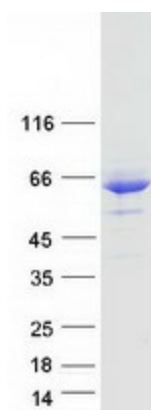
Product images:



Circular map for RC218122



Western blot validation of overexpression lysate (Cat# [LY408572]) using anti-DDK antibody (Cat# [TA50011-100]). Left: Cell lysates from untransfected HEK293T cells; Right: Cell lysates from HEK293T cells transfected with RC218122 using transfection reagent MegaTran 2.0 (Cat# [TT210002]).



Coomassie blue staining of purified MLIP protein (Cat# [TP318122]). The protein was produced from HEK293T cells transfected with MLIP cDNA clone (Cat# RC218122) using MegaTran 2.0 (Cat# [TT210002]).