

Product datasheet for RC218110

ABL2 (NM_005158) Human Tagged ORF Clone

Product data:

Product Type:	Expression Plasmids
Product Name:	ABL2 (NM_005158) Human Tagged ORF Clone
Tag:	Myc-DDK
Symbol:	ABL2
Synonyms:	ABL1; ARG
Mammalian Cell Selection:	Neomycin
Vector:	pCMV6-Entry (PS100001)
E. coli Selection:	Kanamycin (25 ug/mL)
ORF Nucleotide Sequence:	>RC218110 representing NM_005158 Red=Cloning site Blue=ORF Green=Tags(s)

TTTTGTAATACGACTCACTATAGGGCGGCCGGAATTCGTCGACTGGATCCGGTACCGAGGAGATCTGCC
GCC**CGATCGCC**

ATGGTCCTTGGGACAGTTCTCCTTCCACCTAATAGTTATGGCAGAGATCAGGACACTTCACTTTGCTGCC
TGTGCACTGAGGCCTCAGAATCTGCTCTACCCGACTTAACAGATCACTTTGCCAGCTGTGTGGAGGATGG
ATTTGAGGAGACAAGACTGGAGGCAGTAGTCCAGAAGCTTTGCATCGTCCCTATGGTTGTGATGTTGAA
CCCCAGGCACTAAATGAGGCTATCAGGTGGAGCTCCAAGGAGAACTTGTCTGGAGCCACTGAGAGTGACC
CTAATCTCTTCGTTGCACCTTATGATTTTGTAGCAAGTGGTGATAACACACTCAGCATCACTAAAGTGA
AAAGCTACGAGTCCTTGGTTACAACCAGAATGGTGAGTGGAGTGAAGTTCGCTCTAAGAATGGGCAGGGC
TGGGTGCCAAGCAACTACATCACCCAGTGAACAGCCTGGAAAAACACTCCTGGTACCATGGACCTGTGT
CACGCAGTGCAGCTGAGTATCTGCTCAGCAGTCTAATCAATGGCAGCTTCTGGTGCGAGAAAGTGAGAG
TAGCCCTGGGCAGCTGTCCATCTCGCTCAGGTACGAGGGACGTGTGTATCACTACAGGATCAATACCACT
GCAGATGGCAAGGTGTATGTGACTGCTGAGAGCCGCTTCAGCACCTTGGCAGAGCTTGTACACCATCACT
CCACAGTGGCTGATGGGCTGGTGAACATTACACTACCCAGCACCAAGTGAATAAGCCTACAGTCTA
TGGTGTGTCCCCATCCACGACAAATGGGAAATGGAGCGAACAGATATTACCATGAAGCACAACCTTGGG
GGCGGTCAAGTATGGAGAGGTTTACGTTGGCGTCTGGAAGAAATACAGCCTTACAGTTGCTGTGAAAACAT
TGAAGGAAGATACCATGGAGGTAGAAGAATTCTGAAAGAAGCTGCAGTAAATGAAGGAAATCAAGCATCC
TAATCTGGTACAACCTTTAGGTGTGTACTTTGGAGCCACCATTTTACATTGTGACTGAATACATGCCA
TACGGGAATTTGCTGGATTACCTCCGAGAATGCAACCGAGAAGAGGTGACTGCAGTTGTGCTGCTTACA
TGGCCACTCAGATTTCTTCTGCAATGGAGTACTTAGAGAAGAAGAATTTCCATCCATAGAGATCTTGACGC
TCGTAACGCTAGTGGGAGAAAACCATGTGGTAAAAGTGGCTGACTTTGGCTTAAGTAGATTGATGACT
GGAGACACTTATACTGCTCATGCTGGAGCCAAATTTCTATTAAGTGGACAGCACCAGAGAGTCTTGCTT
ACAATACCTTCTCAATTAATCTGACGCTCTGGGCTTTTGGGTATTGTTGTGGGAAATGCTACCTATGG
AATGTCACCATATCCAGGTATTGACCTGTCTCAGTCTATGACCTACTAGAAAAAGGATATCGAATGGAA



[View online >](#)

CAGCCTGAGGGATGCCCCCTAAGGTTTATGAACTTATGAGAGCATGCTGGAAGTGGAGCCCTGCCGATA
GGCCCTCTTTTGTGAAACACACCAAGCTTTTAAACCATGTTCCATGACTCCAGCATTTCTGAAGAGGT
AGCTGAGGAGCTTGGGAGAGCCGCTCCTCGTCATCTGTTGTTCCATACCTGCCCCGGCTACCTATACTT
CCTTCCAAGACTCGGACACTGAAGAAACAGGTGGAGAACAAGGAGAACATTGAAGGGGCACAAGATGCCA
CAGAAAATTCTGCTTCCAGTTTAGCACCAGGGTTCATCAGAGGTGCACAGGCCTTAGTGGATCCCCAGC
ACTGCCTCGAAAGCAAAGAGACAAGTCACCCAGCAGCCTTTGGAAGATGCCAAAGAGACATGCTTCACC
AGGGATAGGAAGGGGGCTTCTCAGCTCCTTCATGAAGAAGAGAAATGCTCCTACACCCCCAAACGCA
GCAGCTCCTTCCGAGAAATGGAGAATCAGCCCCATAAGAAATACGAACTCACGGGTAACCTCTCATCTGT
TGCTTCTCTACAGCATGCTGATGGGTTCTCTTCACTCCTGCCAGCAAGAGGCGAATCTGGTGCCACCC
AAGTGCTATGGGGGAGCTTTGCACAGAGGAACCTCTGTAATGACGACGGTGGTGGGGTGGGGCAGTG
GCACTGCTGGGGTGGTGGTCTGGCATCACAGGCTTCTTTACACCACGCTTAATCAAAAAGACTGGG
CTTACGAGCAGGTAACCCACAGCCAGTGATGACACTTCCAAGCCTTTTCCAAGTCAAACCTACATCT
TCCATGTCCTCAGGGCTCCAGAGCAGGATAGGATGGCAATGACCCTTCCAGGAACTGCCAGAGGTCCA
AACTCCAGCTGGAAGGACAGTGTCCACCTCTTCTCAGCCAGAAGAGAATGTGGACAGGGCCAATGACAT
GCTTCAAAAAAATCAGAGGAAAGTGCTGCTCCAAGCAGGAGAGACCAAAAGCCAAGTTATTGCCAGA
GGAGCCACAGCTTCTCCTCAGAACACCTCTGGGGATCTAGCCATTACAGAGAAGGACCTCCAGGGG
TGGGAGTGGCTGGAGTGGCAGCTGCCCCAAGGGTAAAGAGAAGAATGGTGGGGCACGACTTGGGATGGC
TGGAGTTCCAGAGGATGGAGAGCAGCCGGGCTGGCCTTCTCCAGCCAAGGCTGCCCCGCTCTCCAACC
ACTCACAACCACAAAGTGCCAGTCTTATCTCACCCACTCTGAAACACACTCCAGCTGACGTGCAGCTCA
TTGGCACAGACTCTCAGGGGAATAAATTCAAGCTTATCTGAGCATCAGGTCACATCCTCTGGAGACAA
GGACCGACCCCGACGGGTAAAACCAAAGTGTGCCCCACCCACCACCAGTGATGAGACTACTGCAGCAT
CCGTCCATCTGCTCAGACCCTACAGAAGAGCCAACCTGCCCTAACTGCAGGACAGTCCACATCAGAAACAC
AGGAAGGAGAAAGAAGGCAGCTCTGGGCGCAGTGCCCATCAGTGGGAAAGCTGGGAGGCCAGTGATGCC
TCCACCTCAAGTGCCTCTGCCACATCTCCATCTCGCCAGCCAAAATGGCCAATGGCACAGCAGGTA
AAAGTGGCTCTGAGAAAAACAAACAGGCCGCTGAGAAAATCTCAGCAGCAAAAATCAGCAAGAGGCC
TGCTGGAATGTGCTGACCTACTGTCCAGTGCACCTCACGGAACCTGTGCCAACAGCCAGCTGGTAGACAC
TGGACACCAGCTGCTTGACTACTGCTCAGGCTATGTGGACTGCATCCCTCAAACCTCGCAACAAATTTGCC
TTCCGAGAGGCTGTGAGCAAACCTGGAACCTCAGCCTGCAGGAGCTACAGGTTTCTTACAGCAGCTGCTGGT
TGCCCGGACAAACCCTGCCTTAATAACTTATTGTCATGTGTACAGGAAATCAGTGATGTGGTGCAGAG
G

ACGCGTACGCGGCCGCTCGAGCAGAACTCATCTCAGAAGAGGATCTGGCAGCAAATGATATCCTGGATT
ACAAGGATGACGACGATAAGGTTTAA

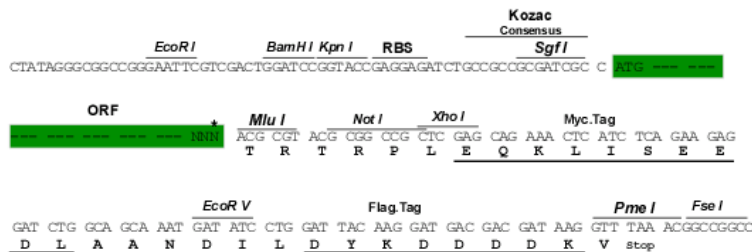
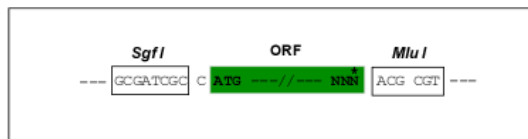
Protein Sequence: >RC218110 representing NM_005158
 Red=Cloning site Green=Tags(s)

```
MVLGTVLLPPNSYGRDQDTSLCCLCTEASESALPDLTDHFASCVEDGFEGDKTGGSSPEALHRPYGCDVE
PQALNEAIRWSSKENLLGATESDPNLFVALYDFVASGDNTLSITKGEKLRVLYGNQNGEWSEVRSKNGQG
WVPSNYITPVNSLEKHSWYHGVPVSRSAEYLLSSLINGSFLVRESESSPGQLSISLRYEGRVYHYRINTT
ADGKYVYTAESRFSTLAEVLVHHHSTVADGLVTTLHYPAPKCNKPTVYGVSPIHDKWEMERTDITMKHKLK
GGQYGEVYVGVWKKYSLTVAVKTLKEDTMEVEEFLKEAAVMKEIKHPNLVQLLGVCTLEPPFYIVTEYMP
YGNLLDYLRECNREEVTAVLLYMATQISSAMEYLEKKNFIHRDLAARNCLVGENHVVKVADFGLSRLMT
GDTYTAHAGAKFPIKWTAPESLAYNTFSIKSDVWAFGVLLWEIATYGMSPYPGIDLQVYDLDLEKGYRME
QPEGCPKPYVELMRACWKWSPADRPFAETHQAFETMFHDSSISEEVAEELGRAASSSVVYPLRPLPIL
PSKTRTLKKQVENKENIEGAQDATENSASSLAPGFIIRGAQASSGSPALPRKQDKSPSSLLEDAKETCFT
RDRKGGFFSSFMKKRNATPPKRSSSFREMNQPHKKYELTGNFSSVASLQHADGFSFPAQQEANLVPP
KCYGGSFAQRNLCNDDGGGGGGGTAGGGWSGITGFFTPRLIKKTLGLRAGKPTASDDTSKPFPRSNSTS
SMSSGLPEQDRMAMTLPRNCQRSKQLERTVSTSSQPEENVDRANDMLPKKSEESAAPSRERPKAKLLPR
GATALPLRTPSGDLAITEKDPGAVGAAAPKGEKNGGARLMAGVPEDGEQPGWSPAKAAPVLP
THNHKVPVLI SPTLKHTPADVQLIGTDSQGNKFKLLSEHQVTSSGDKDRPRRVKPKCAPPVPPVMMRLQ
PSICSDPTEEPTALTAGQSTSETQEGGKAALGAVPISGKAGRPVMPVPLPTSSISPAMANGTAGT
KVALRKTQAAEKISADKISKEALLECADLLSSALTEVPNSQLVDTGHQLLDYCSGVVDCIPQTRNKFA
FREAVSKLELSLQELQVSSAAAGVPGTNPVNLNLLSCVQEISDVVQR
```

TRTRPLEQKLISEEDLAANDILDYKDDDDKV

Restriction Sites: SgfI-MluI
Cloning Scheme:

Cloning sites used for ORF Shuttling:

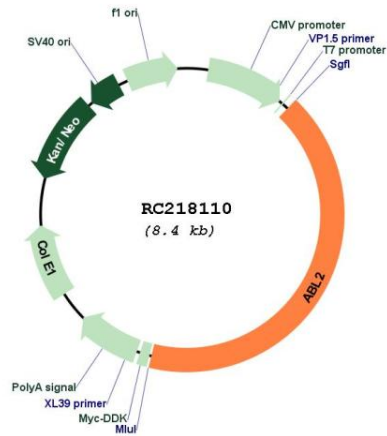


* The last codon before the Stop codon of the ORF

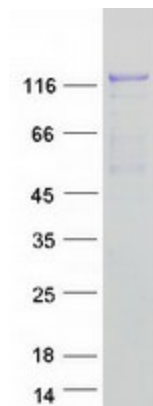
ACCN: NM_005158
ORF Size: 3501 bp

OTI Disclaimer:	The molecular sequence of this clone aligns with the gene accession number as a point of reference only. However, individual transcript sequences of the same gene can differ through naturally occurring variations (e.g. polymorphisms), each with its own valid existence. This clone is substantially in agreement with the reference, but a complete review of all prevailing variants is recommended prior to use. More info
OTI Annotation:	This clone was engineered to express the complete ORF with an expression tag. Expression varies depending on the nature of the gene.
Components:	The ORF clone is ion-exchange column purified and shipped in a 2D barcoded Matrix tube containing 10ug of transfection-ready, dried plasmid DNA (reconstitute with 100 ul of water).
Reconstitution Method:	<ol style="list-style-type: none">1. Centrifuge at 5,000xg for 5min.2. Carefully open the tube and add 100ul of sterile water to dissolve the DNA.3. Close the tube and incubate for 10 minutes at room temperature.4. Briefly vortex the tube and then do a quick spin (less than 5000xg) to concentrate the liquid at the bottom.5. Store the suspended plasmid at -20°C. The DNA is stable for at least one year from date of shipping when stored at -20°C.
RefSeq:	NM_005158.5
RefSeq Size:	3543 bp
RefSeq ORF:	3504 bp
Locus ID:	27
UniProt ID:	P42684
Cytogenetics:	1q25.2
Protein Families:	Druggable Genome, Protein Kinase
Protein Pathways:	ErbB signaling pathway, Viral myocarditis
MW:	126.5 kDa
Gene Summary:	This gene encodes a member of the Abelson family of nonreceptor tyrosine protein kinases. The protein is highly similar to the c-abl oncogene 1 protein, including the tyrosine kinase, SH2 and SH3 domains, and it plays a role in cytoskeletal rearrangements through its C-terminal F-actin- and microtubule-binding sequences. This gene is expressed in both normal and tumor cells, and is involved in translocation with the ets variant 6 gene in leukemia. Multiple alternatively spliced transcript variants encoding different protein isoforms have been found for this gene. [provided by RefSeq, Nov 2009]

Product images:



Circular map for RC218110



Coomassie blue staining of purified ABL2 protein (Cat# [TP318110]). The protein was produced from HEK293T cells transfected with ABL2 cDNA clone (Cat# RC218110) using MegaTran 2.0 (Cat# [TT210002]).