

Product datasheet for **RC218107**

ZNF155 (NM_198089) Human Tagged ORF Clone

Product data:

Product Type:	Expression Plasmids
Product Name:	ZNF155 (NM_198089) Human Tagged ORF Clone
Tag:	Myc-DDK
Symbol:	ZNF155
Synonyms:	pHZ-96
Mammalian Cell Selection:	Neomycin
Vector:	pCMV6-Entry (PS100001)
E. coli Selection:	Kanamycin (25 ug/mL)



[View online »](#)

ORF Nucleotide Sequence:

>RC218107 ORF sequence
 Red=Cloning site Blue=ORF Green=Tags(s)

TTTTGTAATACGACTCACTATAGGGCGGCCGGGAATTCGTCGACTGGATCCGGTACCGAGGAGATCTGCC
 GCC**CGGATCGCC**

ATGACCACATTCAAGGAGCAGTGACCTCAAGGATGTGGCTGTGGTCTTCACTGAGGAGGAGCTGGGGC
 TGCTGGACCTGCCAGAGGAAGCTGTACCGAGATGTGATGCTGGAGAATTTCAGGAACCTGCTCTCAGT
 GGGGCATCAACCGTTCCACCAAGATACTTGCCACTTCTAAGGGAAGAAAAGTTTGGATGATGGGGACA
 GCAACCCAAAGAGAAGGGAATTCAGGAGCAAGATCCAACTGAGTTGGAGTCTGTTCCAGAAGCAGGAG
 CACATGAAGAGTGGTCTGCCAGCAAATCTGGGAACAAATTGCAAAGACTTAACCAGGTCTCAGGACTC
 TATCATAAATAACTCTCAGTTCTTTGAAAATGGTGTATGCCCTCCAGGTTGAAGCAGGACTACCCACA
 ATTCATACAGGACAGAACTTCCAGGGTGGGAAGTGTAAACAGTCCTCAGTGATGTTCCCATCTTTG
 ATCTTCTCAGCAGTTATACTCAGAAGAGAAGTCTTATACATGTGATGAGTGTGGAAAAAGCATCTGTTA
 CATCTCAGCTTTCATGTTTCATCAGAGAGTCCAGTGGGAGAGAACTCTTTATGTGTGATGTGTGTGGC
 AAGGAATTTAGTCAAAGCTCACATCTGCAAACATCAGAGAGTCCACACTGGAGAGAAACCATTCAAAT
 GTGAGCAATGTGGAAAGGTTTCAGTCGTAGATCAGCACTTAATGTTTCATATAAATTACACACAGGAGA
 GAAACCTTACATTTGTGAGGCATGTGGGAAGGCCCTTATTTCATGATCCAGCTTAAGGAACATAAGAGA
 ATCCATACTGGGAGAAACCATTCAAATGTGATATATGTGGTAAGACCTTCTATTTTAGGTCAAGACTTA
 AGAGCCATTCCATGGTTCACACAGGAGAAAAACCTTTAGGTGTGATACATGTGATAAGAGCTTTCATCA
 GAGATCAGCACTTAATAGGCATTGCATGGTCCACACAGGAGAGAAACCGTACAGATGTGAGCAGTGTGGA
 AAAGCTTTATTGGTAGGCTAGATTTTATAAGCATCAGGTGGTCCACACAGGAGAGAAACCATATAAATT
 GTAAAGAAATGTGGGAAGAGCTTCAGATGGTCCATGCCTTTTGAACCATCAGCGAGTCCACAGTGGAGA
 AAAAAGCTTCAAATGTGAAGAATGTGGGAAGGGATTTTATACAAATTCACAACTGTCTCCCATCAGAGA
 TCCACAGTGGTGAAGCCATATAAATGTGAGGAGTGTGGGAAGGGCTATGTTACTAAGTTAATCTTG
 ACTTGCACCAGAGGGTCCACACGGGAGAGAGACCTTATAATTGTAAGGAATGTGGGAAGAACTTTAGCCG
 GGCCTCAAGTATTTTGAATCATAAGAGACTCCACTGCCAGAAAAACCTTCAAATGTGAGGACTGTGGA
 AAGAGGCTTGTACACAGGACATACCGTAAAGACCAGCCGAGAGACTATAGTGGGAAAACCCATCCAAAT
 GTGAGGATTGTGGGAGACGCTACAAGAGGCGCTGAATCTGGATATACTTTATCATTATTTCTAAATGA
 CACA

ACGCGTACGCGGCCGCTCGAGCAGAACTCATCTCAGAAGAGGATCTGGCAGCAAATGATATCCTGGATT
 ACAAGGATGACGACGATAAGGTTTAA

Protein Sequence:

>RC218107 protein sequence
 Red=Cloning site Green=Tags(s)

MTTFKEAVTFKDVAVVFTEEELGLLDPAQRKLYRDMLENFRNLLSVGHQPFHQDTCFLREEKFWMGMT
 ATQREGNSGGKIQTELESVPEAGAHEEWSQCQIWEQIAKDLTRSQDSIINNSQFFENGDVPSQVEAGLPT
 IHTGQKPSQGGKCKQSFSDVPIFDLPQQLYSEEKSYTCDECGKSIICYISALHVHQRVHVGEKLFMCDVCG
 KEFSQSSHLQTHQRVHTGEKPFKCEQCGKFSRRSALNVHKLHTGEKPYICEACGKAFIHDSQLKEHKR
 IHTGEKPFKCDICGKTFYFRSLKSHSMVHTGEKPFRCDDKSFHQRSALNRHCMVHTGEKPYRCEQCG
 KGFIGRLDFYKHQVHTGEKPYNCKEKGKFSRWSSCLLNHQRVHSGEKSFKCEECGKGFYTNSQLSSHQR
 SHSGEKPYKCEECGKGYVTKFNLDLHQRVHTGERPYNCKEKGKFSRASSILNHRKRLHCQKPFKCEDCG
 KRLVHRTYRKDQPRDYSGENPSKCEDCGRRYKRLNLDILLSLFLNDT

TRTRPLEQKLISEEDLAANDILDYKDDDDKV

Chromatograms:

https://cdn.origene.com/chromatograms/mk6605_d05.zip

Restriction Sites:

Sgfl-Mlul

Cloning Scheme:

ACCN: NM_198089

ORF Size: 1614 bp

OTI Disclaimer: The molecular sequence of this clone aligns with the gene accession number as a point of reference only. However, individual transcript sequences of the same gene can differ through naturally occurring variations (e.g. polymorphisms), each with its own valid existence. This clone is substantially in agreement with the reference, but a complete review of all prevailing variants is recommended prior to use. [More info](#)

OTI Annotation: This clone was engineered to express the complete ORF with an expression tag. Expression varies depending on the nature of the gene.

Components: The ORF clone is ion-exchange column purified and shipped in a 2D barcoded Matrix tube containing 10ug of transfection-ready, dried plasmid DNA (reconstitute with 100 ul of water).

- Reconstitution Method:**
1. Centrifuge at 5,000xg for 5min.
 2. Carefully open the tube and add 100ul of sterile water to dissolve the DNA.
 3. Close the tube and incubate for 10 minutes at room temperature.
 4. Briefly vortex the tube and then do a quick spin (less than 5000xg) to concentrate the liquid at the bottom.
 5. Store the suspended plasmid at -20°C. The DNA is stable for at least one year from date of shipping when stored at -20°C.

RefSeq: [NM_198089.3](#)
RefSeq Size: 2629 bp

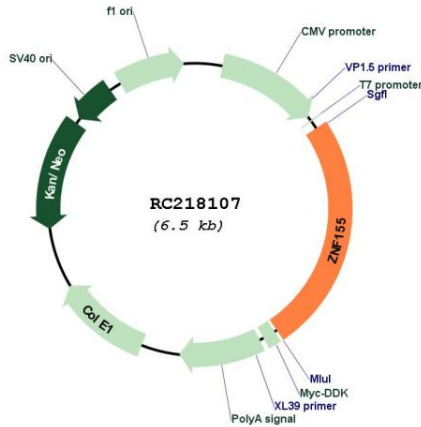
RefSeq ORF: 1617 bp

Locus ID: 7711

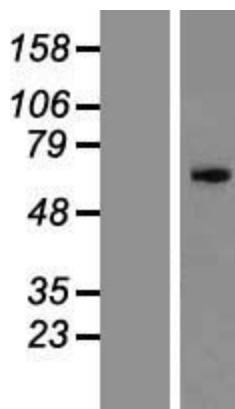
UniProt ID: [Q12901](#)

Cytogenetics: 19q13.31
Protein Families: Transcription Factors
MW: 62.1 kDa
Gene Summary: May be involved in transcriptional regulation.[UniProtKB/Swiss-Prot Function]

Product images:



Circular map for RC218107



Western blot validation of overexpression lysate (Cat# [LY405076]) using anti-DDK antibody (Cat# [TA50011-100]). Left: Cell lysates from untransfected HEK293T cells; Right: Cell lysates from HEK293T cells transfected with RC218107 using transfection reagent MegaTran 2.0 (Cat# [TT210002]).