

## Product datasheet for RC218105

### HuC (ELAVL3) (NM\_032281) Human Tagged ORF Clone

#### Product data:

Product Type:	Expression Plasmids
Product Name:	HuC (ELAVL3) (NM_032281) Human Tagged ORF Clone
Tag:	Myc-DDK
Symbol:	HuC
Synonyms:	HUC; HUCL; PLE21
Mammalian Cell Selection:	Neomycin
Vector:	pCMV6-Entry (PS100001)
E. coli Selection:	Kanamycin (25 ug/mL)
ORF Nucleotide Sequence:	>RC218105 representing NM_032281 Red=Cloning site Blue=ORF Green=Tags(s)

TTTTGTAATACGACTCACTATAGGGCGGCCGGAATTCGTCGACTGGATCCGGTACCGAGGAGATCTGCC  
GCC**CGATCGC**C

ATGGTCACTCAGATACTGGGGCCATGGAGTCTCAGGTGGGGGGGGCCCGGCCGGCCCGCCCTGCCCA  
ACGGGCCACTCCTTGGTACAAATGGAGCCACTGACGACAGCAAGACCAACCTCATCGTCAACTACCTGCC  
CCAGAACATGACCCAGGATGAGTTCAAGAGTCTCTTCGGCAGCATTGGCGACATCGAGTCTGCAAGTTG  
GTTCCGGACAAGATCACAGGGCAGAGCCTTGGCTACGGGTTTGTGAATATTCTGACCCCAATGATGCAG  
ACAAAGCCATCAACACCCTCAACGGCCTCAAATTACAGACGAAGACCATCAAGGTGTCTATGCCAGACC  
CAGTTCAGCATCCATCCGGGATGCTAACCTGTAGTTCAGCGGGCTCCCAAGACCATGAGCCAGAAAGAG  
ATGGAGCAGCTCTTCTCCAGTACGGCCGATCATCACGTCCCGCATCCTGGTGGACCAGGTACAGGTG  
TCTCTCGGGGTGTGGGATTATCCGCTTTGACAAGAGGATTGAGGCCGAAGAGGCTATCAAAGGACTGAA  
TGGGCAGAAGCCGCTGGGCGCAGCTGAGCCATCACAGTCAAGTTCGCGAACAACCAAGTCAGAAGACG  
GGCAGGCGCTGCTACCCACCTTACCAGTATCCGCCCGGCGTACGCAGGCCCCCTACACCATCAGA  
CCCAGCGTTTCCGGCTGGACAATTTGCTCAACATGGCCTACGGCGTCAAGAGGTTCTCGCCGATCGCCAT  
CGATGGTATGAGCGGCCGTGGCGGCGTGGCCCTGTTCGGGGGCGCGGCGGGCCCGGCTGGTGCATCTTC  
GTGTACAACCTGTACCCGAGGCAGACGAGAGCGTGTCTGTCAGCTGTTTCGGCCCTTTGGGGCAGTCA  
CCAACGTCAAGGTCATCCGTGATTTACCACCAACAAGTGAAGGGTTTCGGCTTCGTGACCATGACCAA  
CTATGACGAGGCGCCATGGCCATCGCCAGCCTGAACGGCTATCGCCTGGGCGAGCGCGTGTGCAGGTC  
TCCTTCAAGACCAGCAAACAGCACAAGGCG

**ACGCGT**ACGCGGCCGCTCGAGCAGAAACTCATCTCAGAAGAGGATCTGGCAGCAAATGATATCCTGGATT  
ACAAGGATGACGACGATAAGGTTTAA



[View online »](#)

**Protein Sequence:** >RC218105 representing NM\_032281  
Red=Cloning site Green=Tags(s)

MVTQILGAMESQVGGGPAGPALPNGPLLGTNGATDDSKTNLIVNYLPQNMTQDEFKSLFGSIGDIESCKL  
 VRDKITGQSLGYGFVNYSDPNADKAINTLNLKLTQTKIKVSYARPSSASIRDANLYVSGLPKTM SQE  
 MEQLFSQYGRIITSRILVDQVTGVS RGVGFI RFDKRIEAEAAIKGLNGQKPLGAAEPITVKFANNPSQKT  
 GQALLTHLYQSSARRYAGPLHHQTQRFRLDNLN MAYGVKRFSP I AIDGMSGLAGVGLSGGAAGAGWCIF  
 VYNLSPEADESVLWQLFGPFGAVTNVKVIRDFTTNKCKGFGFVTMTNYDEAAMAIASLNGYRLGERVLQV  
 SFKTSKQHKA

TRTRPLEQKLISEEDLAANDILDYKDDDDKV

**Chromatograms:** [https://cdn.origene.com/chromatograms/mk8054\\_f07.zip](https://cdn.origene.com/chromatograms/mk8054_f07.zip)

**Restriction Sites:** SgfI-MluI

**Cloning Scheme:**



\* The last codon before the Stop codon of the ORF

**ACCN:** NM\_032281

**ORF Size:** 1080 bp

**OTI Disclaimer:** The molecular sequence of this clone aligns with the gene accession number as a point of reference only. However, individual transcript sequences of the same gene can differ through naturally occurring variations (e.g. polymorphisms), each with its own valid existence. This clone is substantially in agreement with the reference, but a complete review of all prevailing variants is recommended prior to use. [More info](#)

**OTI Annotation:** This clone was engineered to express the complete ORF with an expression tag. Expression varies depending on the nature of the gene.

**Components:** The ORF clone is ion-exchange column purified and shipped in a 2D barcoded Matrix tube containing 10ug of transfection-ready, dried plasmid DNA (reconstitute with 100 ul of water).

**Reconstitution Method:**

1. Centrifuge at 5,000xg for 5min.
2. Carefully open the tube and add 100ul of sterile water to dissolve the DNA.
3. Close the tube and incubate for 10 minutes at room temperature.
4. Briefly vortex the tube and then do a quick spin (less than 5000xg) to concentrate the liquid at the bottom.
5. Store the suspended plasmid at -20°C. The DNA is stable for at least one year from date of shipping when stored at -20°C.

**RefSeq:** [NM\\_032281.3](#)

**RefSeq Size:** 4661 bp

**RefSeq ORF:** 1083 bp

**Locus ID:** 1995

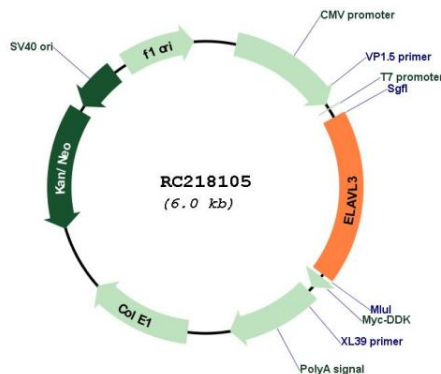
**UniProt ID:** [Q14576](#)

**Cytogenetics:** 19p13.2

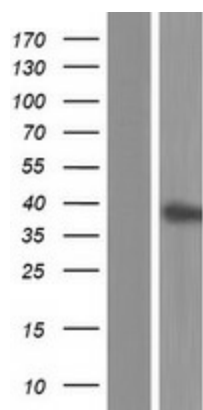
**MW:** 38.7 kDa

**Gene Summary:** A member of the ELAVL protein family, ELAV-like 3 is a neural-specific RNA-binding protein which contains three RNP-type RNA recognition motifs. The observation that ELAVL3 is one of several Hu antigens (neuronal-specific RNA-binding proteins) recognized by the anti-Hu serum antibody present in sera from patients with paraneoplastic encephalomyelitis and sensory neuronopathy (PEM/PSN) suggests it has a role in neurogenesis. Two alternatively spliced transcript variants encoding distinct isoforms have been found for this gene. [provided by RefSeq, Jul 2008]

**Product images:**



Circular map for RC218105



Western blot validation of overexpression lysate (Cat# [LY410225]) using anti-DDK antibody (Cat# [TA50011-100]). Left: Cell lysates from untransfected HEK293T cells; Right: Cell lysates from HEK293T cells transfected with RC218105 using transfection reagent MegaTran 2.0 (Cat# [TT210002]).