

Product datasheet for **RC218104**

PEL13 (NM_145065) Human Tagged ORF Clone

Product data:

Product Type:	Expression Plasmids
Product Name:	PEL13 (NM_145065) Human Tagged ORF Clone
Tag:	Myc-DDK
Symbol:	PEL13
Mammalian Cell Selection:	Neomycin
Vector:	pCMV6-Entry (PS100001)
E. coli Selection:	Kanamycin (25 ug/mL)



[View online »](#)

ORF Nucleotide Sequence:

>RC218104 representing NM_145065
 Red=Cloning site Blue=ORF Green=Tags(s)

TTTTGTAATACGACTCACTATAGGGCGGCCGGAATTCGTCGACTGGATCCGGTACCGAGGAGATCTGCC
 GCC**CGGATCGCC**

ATGGTGTCTGGAAGAAACCTGAAGTGGGGTCCCCCGAACCTCAGACCTCCAGCACCGGGGAACAAGG
 GCTCTTTCGTTCTCTCTCTCCCGGTGAAGATGCGCAGCCAGGCGAGGAGCCATCAAGTATGGTGAAC
 CATCGTCTGGGATGCTGTGAGGAAGGAGGTGAGGAAACCGAGGCTCAGAGAGGGGAAGTACTGGCCCA
 AGGGCACACAGCTGCTACAATGGTTGTCTGGCAAGTGGGGACAAGGGCCGCCGGGAAGCCGCTGGCAC
 TGAGCCGCCGGTGCACGCCAACGGGTGAAGCCAGACGTATGCACCACATCTCCACGCCGCTCGTCTC
 CAAGGCACTGAGTAACCGTGGTCAACAGCATCTCGTATACACTGTCCCGAGCCACTCGGTATAGTG
 GAGTATACACATGATAGCGACACAGACATGTTCCAGATTGGCCGCTCCACAGAGAACATGATTGACTTCG
 TGGTAACAGACAGTCCCTGGAGGAGGGGCTGCCGAGGGCCCTTCTGCCAGAGCACCATCTCCCGCTA
 TGCTTCCGATCTCTGTGACCGCCGCCACCCTATACTGCCGCATCTATGCCGCTGGCTTCGATGCC
 TCTAGCAACATCTTCTTGGAGAGCGAGCGCCAAATGGCGGACCCAGATGGCCTGATGGATGGACTGA
 CCACCAATGGAGTCTGGTGTATGACCCCGCAGGCGGCTTCTCCGAGGACTCAGCCCCGGGTGTCTGGCG
 GGAGATCTCGGTCTGTGGGAATGTGTACACATTGCGGGACAGCCGCTCAGCCAGCAGCGGGGAAGCTG
 GTGAAAAACGAGTCCAACGTGCTGCAGGACGGCTCTCTCATCGACCTGTGTGGGGCCACACTGCTGTGGC
 GCACACCGCGGGGCTGCTGCGGGTCCACACTGAAGCAACTGGAGGCCAGCGGCAGGAGGCAAAATGC
 AGCGCGGCCCCAGTCCCCGTGGGCTCAGCACTCTGGCCTTCCCAGCCAGCCGTTGGCCGCACAGCG
 CCCGACAAACAGCAGCCCTGGTCTACGTCCGCTGCGGGCAGTCCATGGCTACCACGGCTGGGGCTGCC
 GCGGGGAGCGGGCCCCAGGAGCGCGAATGTCTCTCTGCCGCTTGTGGGGCCTTATGTGCCTCTATG
 GCTTGGCCAGGAGCGCGCCTCTGCCTGGACCCTGGGCCGCTAGCCATGCCTTTGCACCTTGGCGCCAC
 GTCTGCTCTGAGAAGACTGCCCGTACTGGGCCAGACCCACTGCCCCAGGCACCCATGCTTTCCATG
 CCGCTGCCCTTTTGGGGGCTGGCTTACCGCGAGCATGGCTGCGTCCGCTCATTTCAGGGGCC
 GCTGGAT

ACGCGTACGCGGCCGCTCGAGCAGAAACTCATCTCAGAAGAGGATCTGGCAGCAATGATATCCTGGATT
 ACAAGGATGACGACGATAAGGTTTAA

Protein Sequence:

>RC218104 representing NM_145065
 Red=Cloning site Green=Tags(s)

MVLEGNPEVGSPTSRLQHRNKGSCVLSPPGEDAQPGEEPITYGELIVLGCCEEGGEETEQRGEVTPG
 RAHSCYNGCLASGDKGRRRSRLALSRSHANGVKPDVMHHISTPLVSKALSNRGQHSISYTLRSRSHVIV
 EYTHSDTDMFQIGRSTENMIDFVVTDTSPGGAAEGPSAQSTISRYACRILCDRRPPYTARIYAAGFDA
 SSNIFLGERAAKWRTPDGLMDGLTTNGVLMHPAGGFSEDSAPGVWREISVCGNVYTLRDSRSAQQRGKL
 VENESNVLQDGSLLDLGATLLWRTPAGLLRAPTLKQLEAQRQANAARPQCPVGLSTLAFSPARGRTA
 PDKQQPWVYVRCGHVHGYHGWGCRREGRERECPLCRLVGPYVPLWLGQEAAGLCLDPGPPSHAFPCGH
 VCSEKTARYWAQTPLPHGTHAFHAACPFCAWLTGEHGCVRLIFQGPLD

TRTRPLEQKLISEEDLAANDILDYKDDDDKV

Chromatograms:

https://cdn.origene.com/chromatograms/mk8015_g09.zip

Restriction Sites:

SgfI-MluI

Cloning Scheme:

Cloning sites used for ORF Shutting:



* The last codon before the Stop codon of the ORF

ACCN: NM_145065

ORF Size: 1407 bp

OTI Disclaimer: The molecular sequence of this clone aligns with the gene accession number as a point of reference only. However, individual transcript sequences of the same gene can differ through naturally occurring variations (e.g. polymorphisms), each with its own valid existence. This clone is substantially in agreement with the reference, but a complete review of all prevailing variants is recommended prior to use. [More info](#)

OTI Annotation: This clone was engineered to express the complete ORF with an expression tag. Expression varies depending on the nature of the gene.

Components: The ORF clone is ion-exchange column purified and shipped in a 2D barcoded Matrix tube containing 10ug of transfection-ready, dried plasmid DNA (reconstitute with 100 ul of water).

Reconstitution Method:

1. Centrifuge at 5,000xg for 5min.
2. Carefully open the tube and add 100ul of sterile water to dissolve the DNA.
3. Close the tube and incubate for 10 minutes at room temperature.
4. Briefly vortex the tube and then do a quick spin (less than 5000xg) to concentrate the liquid at the bottom.
5. Store the suspended plasmid at -20°C. The DNA is stable for at least one year from date of shipping when stored at -20°C.

RefSeq: [NM_145065.3](#)
RefSeq Size: 2697 bp

RefSeq ORF: 1410 bp

Locus ID: 246330

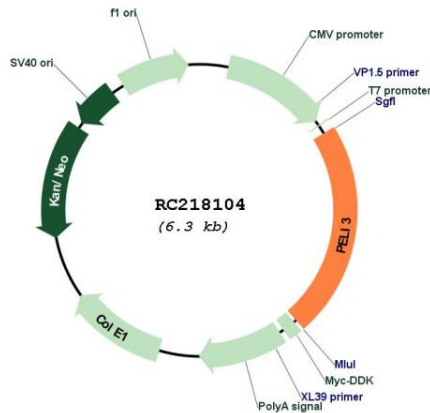
UniProt ID: [Q8N2H9](#)

Cytogenetics: 11q13.2

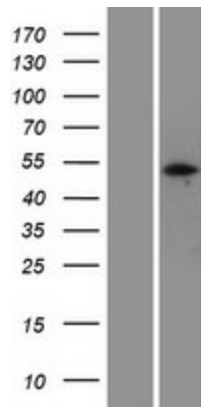
MW: 50.6 kDa

Gene Summary: The protein encoded by this gene is a scaffold protein and an intermediate signaling protein in the innate immune response pathway. The encoded protein helps transmit the immune response signal from Toll-like receptors to IRAK1/TRAF6 complexes. Several transcript variants encoding different isoforms have been found for this gene.[provided by RefSeq, Jul 2011]

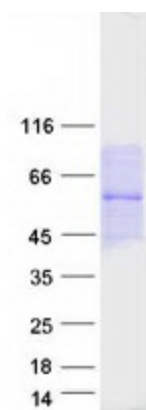
Product images:



Circular map for RC218104



Western blot validation of overexpression lysate (Cat# [LY408053]) using anti-DDK antibody (Cat# [TA50011-100]). Left: Cell lysates from untransfected HEK293T cells; Right: Cell lysates from HEK293T cells transfected with RC218104 using transfection reagent MegaTran 2.0 (Cat# [TT210002]).



Coomassie blue staining of purified PELI3 protein (Cat# [TP318104]). The protein was produced from HEK293T cells transfected with PELI3 cDNA clone (Cat# RC218104) using MegaTran 2.0 (Cat# [TT210002]).