

Product datasheet for **RC218098**

myosin heavy chain 3 (MYH3) (NM_002470) Human Tagged ORF Clone

Product data:

Product Type:	Expression Plasmids
Product Name:	myosin heavy chain 3 (MYH3) (NM_002470) Human Tagged ORF Clone
Tag:	Myc-DDK
Symbol:	myosin heavy chain 3
Synonyms:	CPSFS1A; CPSFS1B; CPSKF1A; CPSKF1B; DA2A; DA2B; DA2B3; DA8; HEMHC; MYHC-EMB; MYHSE1; SMHCE
Mammalian Cell Selection:	Neomycin
Vector:	pCMV6-Entry (PS100001)
E. coli Selection:	Kanamycin (25 ug/mL)
ORF Nucleotide Sequence:	>RC218098 representing NM_002470 Red=Cloning site Blue=ORF Green=Tags(s)

TTTTGTAATACGACTCACTATAGGGCGGCCGGAATTCGTCGACTGGATCCGGTACCGAGGAGATCTGCC
GCC**CGATCGCC**

ATGAGTAGTGACACTGAAATGGAAGTGTTCCGGCATAGCTGCTCCTTTCCCGGAAGTCAGAAAAGGAGA
GGATCGAGGCTCAGAACCAGCCCTTTGATGCCAAGACGTATTGCTTCGTGGTGGACTCAAAGGAAGAATA
TGCCAAGGGGAAAATCAAGAGTTCTCAGGATGGGAAGGTCAGTGTGAAACTGAGGACAACAGGACCCTG
GTGGTCAAACCAGAGGATGTGTACGCCATGAACCCCCCAAGTTCGACAGGATCGAAGACATGGCCATGC
TGACGCACCTGAATGAGCCAGCCGTGCTGTACAACCTGAAGGACCGTTACACATCTTGGATGATCTATAC
CTACTCAGGCCTCTTCTGTGTCAGTGTCAACCCCTACAAGTGGCTGCCGGTGTACAACCCCGAGGTGGT
GAAGGCTACCGAGGCAAAAAGCGCCAGGAGGCCACCCACATCTTCTCCATCTCTGACAACGCCTATC
AGTTCATGCTGACTGATCGTGAAAACCAGTCCATTCTGATCACCGGAGAAATCCGGGGCAGGAAAGACTGT
GAACACCAAAACGGGTATCCAGTACTTTGCAACAATTGCAGCTACTGGGGACCTGGCCAAGAAGAAGGAC
TCCAAAATGAAGGGGACTCTGGAAGATCAAATCATCAGTGCCAATCCCCTGCTGGAGGCCTTTGGGAACG
CCAAGACTGTGAGGAATGACAACCTCCCGTTTTGGCAAGTTCATCCGAATCCATTTGGAAACCACTGG
GAAGCTGGCCTCTGCAGATATTGAAACTTATCTTCTGGAAAAATCAAGAGTCACTTTCCAGCTGAAGGCT
GAAAGAAGCTACCACATCTTCTACCAGATTCTTCTAACAAAGAAGCCTGAGCTCATAGAGCTGCTGCTTA
TTACGACCAACCCCTTACGACTACCCGTTTATTAGCCAGGGGAGATCCTGGTGGCCAGCATAGATGATGC
AGAGGACTGCTGGCTACAGACAGCGCCATTGACATCCTGGGCTTCAACCCAGAAGAGAAATCTGGGCTC
TACAAGCTGACGGGAGCCGTGATGCACTACGGGAACATGAAGTTCAAGCAGAAGCAGCGAGAGGAGCAGG
CCGAGCCGGATGGCACAGAAGTGCTGACAAAACAGCCTATCTGATGGGCCTGAACTCTTCGACCTCCT
AAAAGCTTTGTGCTTTCTAGAGTGAAAGTTGGGAATGAGTACGTTACCAAAGGTCAAAGTGTGGATCAG
GTTCCACATGCTGTAATGCTCTTTCAAATCAGTTTATGAAAAGTTGTTCTTGTGGATGGTCACTCGCA
TTAACCAGCAACTGGATACGAAGCTTCCAAGACAACACTTCATTGGTGTGTTGGACATTGCAGGCTTTGA



AATCTTTGAGTATAACAGCCTGGAGCAGCTGTGCATCAACTTCACCAATGAGAACTGCAACAGTTTTTC
AACCACCACATGTTTCGTGCTGGAGCAGGAGGAGTACAAGAAGGAAGGCATCGAGTGGACGTTTCATTGACT
TCGGGATGGACCTGGCTGCCTGCATCGAGCTCATCGAGAAGCCTATGGGCATCTTCTCCATCCTGGAAGA
GGAGTGCATGTTCCCAAGGCAACAGACACCTCCTTCAAGAACAAGCTGTATGACCAGCATCTTGGAAAG
TCCAACAACCTCCAGAAGCCCAAGGTGGTCAAAGGCAGGGCCGAGGCTCACTTCTCACTGATCCACTATG
CGGGCACCGTGGACTACAGTGTCTCAGGTTGGCTGGAGAAGAACAAGACCCTCTGAACGAGACTGTGGT
TGGGCTGTACCAGAAGTCTTCCAACAGGCTCCTGGCACACCTCTATGCCACGTTTTGCCACGGCGGATGCT
GACAGTGGAAAGAAGAAAAGTTGCCAAGAAGAAGGTTCTTCTTCCAAACTGTCTCTGCCCTTTTCAGGG
AAAACCTGAACAAGCTGATGTCAAATTTAAGAATACTACCCTCATTTTTGTGCGTTGTATAAATCCCAA
TGAAACCAAACTCCAGGGGCTATGGAACACAGCCTTGTCTGCACCAGCTGCGGTGTAACGGTGTCTG
GAGGGCATCCGCATCTGCAGGAAAGGTTCCAAAACAGGATTCTCTATGGCGATTTTAAACAAAGATACC
GAGTGTGAATGCCAGTGAATCCCTGAGGGACAATTCTTACAGCAAGAAAGCCTGTGAAAAGCTTCT
GGCATCCATTGATATTGACCACACTCAGTACAAATTTGGACATACCAAGGTGTTCTTCAAGGCTGGCTG
CTGGGAACCTGGAAGAGATGCGGGATGACCGCTGGCCAACTAATCACCCGGACACAAGCTGTGTGCA
GAGGGTTCCTCATGCGTGTGGAATTCAGAAGATGGTGCAGAGGAGGGAGTCCATCTTCTGCATCCAGTA
CAACATTCGCTCATTATGAACGTCAAGCACTGGCCCTGGATGAAACTCTTCTTCAAGATCAAGCCCTC
CTCAAGAGTGCAGAGACTGAGAAAGAGATGGCCACCATGAAGGAAGAATTCCAGAAAACCAAGATGAAC
TCGCCAAGTGGAGGCAAAAAGGAAGGAGCTAGAGGAAAACTGGTACTCTGGTCCAAGAGAAGAATGA
CCTGCAGCTCCAAGTACAAGCTGAAAGCGAAAAATTTGTTGGATGCTGAGGAAAGATGCGATCAGCTGATC
AAAGCCAAATTCAGCTCGAGGCCAAGATCAAGGAGGTGACAGAGAGAGCTGAAGATGAGGAGGAGATCA
ATGCTGAGCTGACGGCCAAGAAGAGGAACTGGAGGATGAATGCTCAGAGCTCAAGAAAGACATTGATGA
CCTTGAGTTGACCCTGGCCAAGGTTGAGAAGGAGAAGCATGCCACAGAGAACAAGGTTAAAAACCTTACT
GAGGAACCTCTCTGGGTTAGATGAAACAATTGCAAAGTTAACAGAGAGAAGAAGGCCCTCCAAGGGCGC
ACCAGCAGGCCTTGGATGACCTCCAAGCTGAAGAAGACAAGTCAATTCTTTGAACAAAACCAAGAGCAA
ACTGGAACAGCAAGTGGAAAGACCTGGAAGCTCCCTAGAACAAGAAAAGAAGCTCCGAGTAGACCTGGAA
AGGAACAAAAGGAAATTTGGAAGGAGACTTGAAGCTTGTCAAGAGTCCATATTAGATCTGGAGAATGACA
AGCAACAGCTGGACGAAAGGCTCAAGAAGAAAGATTTTGAATATTGTCAACTTCAAAGCAAAGTGGAAAG
TGAGCAGACACTGGCCCTCCAGTTTCAAGAAAATCAAAGAGTTGCAGGCTCGAATTGAGGAGCTGGAA
GAGGAGATAGAGGCGGAGAGGGCCACCCGCGGAAGACAGAGAAACAGCGCAGCGACTATGCCCGGGAGC
TGGAGGAGCTGAGCGAGCGGCTGGAGGAGGCGGGAGGCGTCACTCCACGCAGATAGAGCTCAACAAGAA
GCGGGAGGCGGAGTTCTGAAGTGCAGGAGGACCTGGAGGAGGCCACACTGCAGCACGAAGCCATGGTG
GCCGCGCTGAGGAAGAAGCATGCCGATAGTGTGGCCGAGCTTGGGGAGCAGATTGACAACCTGCAGCGGG
TCAAGCAGAAGCTGGAGAAGGAGAAGAGCGAGTTCAAGCTGGAGATCGATGACCTCTCCAGCAGCATGGA
GAGTGTGTGAAAATCTAAGGCAAATCTGGAAAAATCTGCCGAACCCTGGAGGATCAGTTAAGTGAAGCC
AGGGGCAAGAAATGAGGAAATTCAGAGGAGCCTGAGCGAGCTGACCACACAGAAGTCTCGTTTGCAGACCG
AGGCTGGTGAAGTGAATCGTCAAGTGGAAAGAAAAGAAAGCATAGTATCCCAACTTTCCAGGAGCAAAGCA
AGCCTTACCCAGCAAACAGAAGAGCTCAAGAGGACGCTGGAGGAAGAGAACAAGGCCAAGAAGCCCTG
GCGCACGCCCTGCAGTCTCCGCCACGACTGTGACCTGCTGCGGAACAGTATGAGGAGGAGCAGGAAG
GCAAAGCTGAGCTGCAGAGGGCGCTGTCCAAGGCCAATAGTGAAGTTGCCAGTGGAGAACCAAATACGA
GACGGACGCCATCCAGCGCACAGAAGAGCTGGAGGAGGCCAAGAAAAAACTTGTCAAGCCTTCAAGAT
TCCGAGGAACAGGTTGAGGCAGTGAATGCTAAATGTGCTTCACTGGAGAAGCAAGCAGAGGCTGCAAG
GAGAGGTGGAGGATCTGATGTTGATGTTGAAAGAGCCAATTCCTTGGCCGCGCTCTGGACAAGAAGCA
GAGGAACCTTGAAGGTTGTTGGCAGAGTGAAGACAAAGTGTGAGGAGAGCCAAGCAGAGCTGGAGGCA
TCCCTGAAGGAGTCCGCTCCTTGAAGCACTGAGCTCTTCAAAGTAAAAATGCCTACGAGGAAGCCTTAG
ATCAACTGAAACTGTGAAACGGGAAAAATAAGAACTTAGAGCAGGAGATAGCAGATCTCACAGAACAAT
TGCTGAAATGGCAAACCATCCATGAACTGGAGAAATCAAGAAAGCAGATTGAGCTGAAAAGGCTGAT
ATCCAGCTGGCTCTCAGGAAGCAGAGGCTGCTCTTGAAGCATGAAGAAGCCAAGATCCTCCGAATCCAGC
TTGAATTGACACAAGTGAATCAGAAATGATAGAAAGATCGCCGAGAAGGATGAAGAGATCGAGCAGCT
GAAGAGGAACTACCAGAGAACAGTGAAAACCATGCAGAGCGCCCTGGACGCCGAGGTGCGGAGCAGGAAT
GAAGCCATCCGGCTCAAGAAGAAGATGGAGGGGACCTGAATGAAATCGAGATCCAGCTGAGCCACGCCA
ACCGCCAGGCGGCGGAGACCCCTCAAACCTCAGGAGTGTCCAGGGACAGCTGAAGGATACGCAGCTCCA
CCTGGATGATGCCCTCCGGGGCCAGGAGACCTGAAGGAGCAGCTGGCGATTGTGGAGCGCAGAGCCAAC

CTGCTGCAGGCCGAGGTGGAGGAGCTGCGGGCTACTCTGGAGCAGACGGAGAGGGCCCGGAACTGGCGG
AACAGGAGCTCCTGGACTCCAACGAGAGGGTGCAGCTGCTGCATACCCAGAACACCAGCCTCATCCACAC
CAAGAAGAAGCTGGAGACAGACCTCATGCAGCTCCAGAGTGAAGATGCCAGCAGGGATGCAAGG
AACGCTGAGGAGAAGGCCAAGAAGGCCATCACGGACGCTGCCATGATGGCGGAGGAGCTGAAGAAGGAGC
AGGACACCAGCGCCACCTTGAGCGGATGAAGAAGAACCTGGAACAGACGGTGAAGGACCTGCAGCATCG
TCTAGATGAGGCCGAGCTGGCGCTGAAGGGCGGGAAGAAGCAGATCCAGAACTGGAGACCAGGATC
CGAGAGCTGGAGTTTGAAGCTTGAGGGAGAGCAGAAGAACAACAGAGTCTGTTAAGGGCCTGAGGAAGT
ATGAGCGGAGGGTCAAGGAGCTGACGTACCAGAGTGAAGAGGACAGGAAGAATGTGCTGAGATTGCAGGA
TCTGGTGGATAAACTGCAAGTGAAGTCAAGTCTACAAGAGGCAGGCGGAGGAGCTGATGAACAAGCC
AATGCTCATCTACCAAATTCGAAAGGCTCAGCATGAGCTGGAGGAGGCCGAGGAACGTGCGGATATCG
CAGAATCTCAAGTCAACAAGCTCCGCGCTAAGACTCGAGACTTACCTCCAGCAGGATGGTGGTCCACGA
GAGTGAAGAG

ACGCGTACGCGGCCGCTCGAGCAGAACTCATCTCAGAAGAGGATCTGGCAGCAAATGATATCCTGGATT
ACAAGGATGACGACGATAAGGTTTAA

Protein Sequence:

>RC218098 representing NM_002470

Red=Cloning site Green=Tags(s)

MSSDTEMEVFGIAAPFLRKSEKERIEAQNPFDKTYCFVVDKSKEEYAKGKIKSSQDGKVTVETDNRTL
VVKPEDVYAMNPKFDRIEDMAMLTHLNEPAVLNLDKRYTSWMIYYSGLFCVTVNPYKWLVPYNPEVV
EGYRGGKRQEAAPHIFISIDNAYQFMLTDRENQSILITGESGAGKTVNTRKVIQYFATIAATGDLAKKKD
SKMKGTLLEDQIISANPLLEAFGNKTVRNDNSSRFGKFIIRHFGTTGKLASADIETYLLEKSRVTFQLKA
ERSYHIFYQILSNKPELIELLLITNPDYDPIFSQGEILVASIDDAEELLATDSAIDILGFTPEEKSGL
YKLTGAVMHYGNMKFKQKQREEQAEPDGTVEADKTAAYLMLNSSLKALCFPRVKVGNVYTKGQTVDDQ
VHHAVNALSKSVYEKFLWVTRINQQLDTKLPRQHFIVGLDIAGFEIFEYNSLEQLCINFNTEKQQFF
NHHMFVLEQEEYKKEGIEWTFIDFGMDLAAICELIEKPMGIFSILEEEMFPKATDTSFKNLYDQHLGK
SNNFQPKPVVKGRAEAHSLIHYAGTVDYSVSGWLEKNDPLNETVVGLYQKSSNRLLAHLATYATADA
DSGKVKVAKKGGSSFTVSALFRENLNKLSNLRTHPHFVRCIIPNETKTPGAMEHSLVLHQLRCNGVL
EGIRICRKGFPNRIPLYDFKQRYRVLNASAIPEGQFIDSKKACEKLLASIDIDHTQYKFGHTKVFKAAGL
LGTLEEMRDDRLAKLITRTQAVCRGFLMRVEFQKMQRRRESIFCIQYNIRSFMNKHWPMKLFKIKPL
LKSATEKEMATMKEEFQTKDELAKSEAKRKELEEKLVTLVQEKNDLQLQVQAESENLLDAEERCDQLI
KAKFQLEAKIKEVTERAEDEEEINAELTAKKRKLEDECSSELKDDIDLELTLAKVEKEKHATENKVNLT
EELSGLDETIKLTREKKALQEAHQALDDLQAEEDKVNLSNKTSKLEQQVEDLESSLEQEKLRVDLE
RNKRKLEGLKLAQESILDLENDKQQLDERLKKKDFEYCQLQSKVEDEQTLGLQFQKKIKELQARIEELE
EEIEAERATRAKTEKQSDYARELEELSERLEEAGGVTSTQIELNKKREAEFLKLRDLEEATLQHEAMV
AALRKKHADSVAELEGEQIDNLQVVKQLEKEKSEFKLEIDDLSSSMESVSKSKANLEKICRTLEDQLSEA
RGKNEEIQRSLSELTTQKSRLQTEAGELSRQLEEKESIVSQLSRKQAFQQTEELKRLQEEENKAKNAL
AHALQSSRHCDLLREQYEEEQEKAELQRALSKANSEVAQWRKYETDAIQRTEELEAAKKLAQRLQD
SEEQVEAVNAKASLEKTKQRLQGEVEDLMVDVERANSLAAALDKKQRNFDKVLAEWTKCEEQAEELEA
SLKESRSLSTELFKLNAYEEALDQLETVKRENKLEQEIADLTEQIAENGKTIHELEKSRKQIELEKAD
IQLALEEAEEALEHEEAKILRIQLELTQVKSEIDRKIAEKDEEIEQLKRNRYQRTVETMQSALDAEVRSRN
EAIIRLKKKMEGDLNEIEIQLSHANRQAAETLKHLSVQGLKDTQLHLDDALRGQEDLKEQLAIVERRAN
LLQAEVEELRATLEQTERARKLAEQELLDSENERVQLLHTQNTSLIHTKKKLETDLMLQSEVEDASRDAR
NAEEKAKKAITDAAMAEELKKEQDTSAHLERMKNLEQTVKDLQHLRDEAEQLALGGKKQIQKLETRI
RELEFELEGEQKNTESVKGRLRYERRVKELTYQSEEDRKNVLRQLVDKLVKVKYSYKRAEEADEQA
NAHLTKFRKAQHELEEAERADIAESQVNKLRAKTRDFTSRSMVVEHESEE

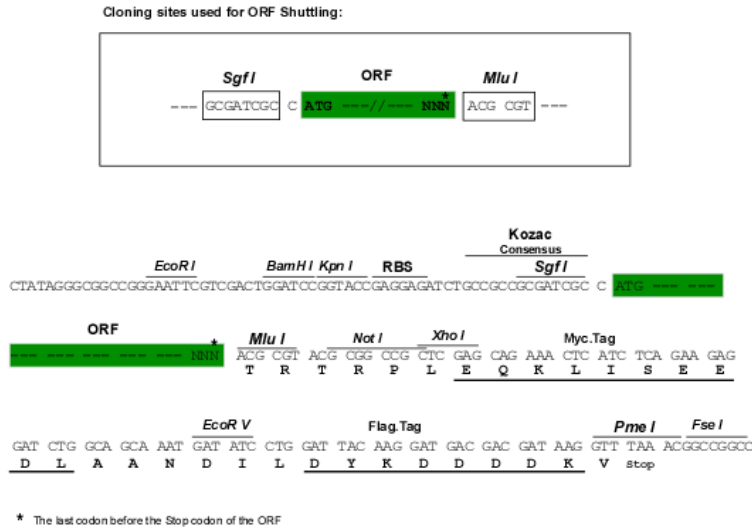
TRTRPLEQKLISEEDLAANDILDYKDDDDKVV

Chromatograms:

https://cdn.origene.com/chromatograms/mk8119_b10.zip

Restriction Sites:

SgfI-MluI

Cloning Scheme:


ACCN: NM_002470

ORF Size: 5820 bp

OTI Disclaimer: Due to the inherent nature of this plasmid, standard methods to replicate additional amounts of DNA in E. coli are highly likely to result in mutations and/or rearrangements. Therefore, OriGene does not guarantee the capability to replicate this plasmid DNA. Additional amounts of DNA can be purchased from OriGene with batch-specific, full-sequence verification at a reduced cost. Please contact our customer care team at custsupport@origene.com or by calling 301.340.3188 option 3 for pricing and delivery.

The molecular sequence of this clone aligns with the gene accession number as a point of reference only. However, individual transcript sequences of the same gene can differ through naturally occurring variations (e.g. polymorphisms), each with its own valid existence. This clone is substantially in agreement with the reference, but a complete review of all prevailing variants is recommended prior to use. [More info](#)

OTI Annotation: This clone was engineered to express the complete ORF with an expression tag. Expression varies depending on the nature of the gene.

Components: The ORF clone is ion-exchange column purified and shipped in a 2D barcoded Matrix tube containing 10ug of transfection-ready, dried plasmid DNA (reconstitute with 100 ul of water).

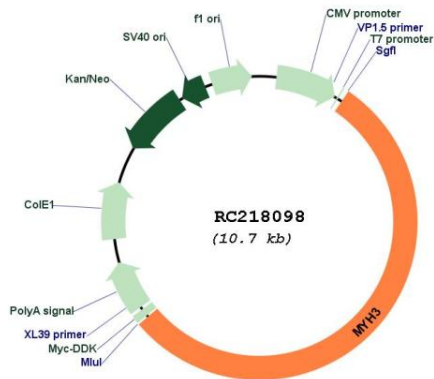
- Reconstitution Method:**
1. Centrifuge at 5,000xg for 5min.
 2. Carefully open the tube and add 100ul of sterile water to dissolve the DNA.
 3. Close the tube and incubate for 10 minutes at room temperature.
 4. Briefly vortex the tube and then do a quick spin (less than 5000xg) to concentrate the liquid at the bottom.
 5. Store the suspended plasmid at -20°C. The DNA is stable for at least one year from date of shipping when stored at -20°C.

RefSeq: [NM_002470.4](#)
RefSeq Size: 6061 bp
RefSeq ORF: 5823 bp

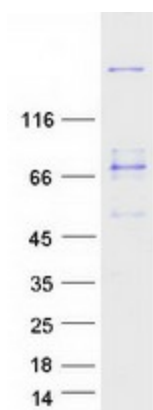
Locus ID: 4621
UniProt ID: [P11055](#)
Cytogenetics: 17p13.1
Protein Pathways: Tight junction, Viral myocarditis
MW: 224.4 kDa

Gene Summary: Myosin is a major contractile protein which converts chemical energy into mechanical energy through the hydrolysis of ATP. Myosin is a hexameric protein composed of a pair of myosin heavy chains (MYH) and two pairs of nonidentical light chains. This gene is a member of the MYH family and encodes a protein with an IQ domain and a myosin head-like domain. Mutations in this gene have been associated with two congenital contracture (arthrogryposis) syndromes, Freeman-Sheldon syndrome and Sheldon-Hall syndrome. [provided by RefSeq, Jul 2008]

Product images:



Circular map for RC218098



Coomassie blue staining of purified MYH3 protein (Cat# [TP318098]). The protein was produced from HEK293T cells transfected with MYH3 cDNA clone (Cat# RC218098) using MegaTran 2.0 (Cat# [TT210002]).