

Product datasheet for **RC218095**

Staufen (STAU1) (NM_017452) Human Tagged ORF Clone

Product data:

Product Type:	Expression Plasmids
Product Name:	Staufen (STAU1) (NM_017452) Human Tagged ORF Clone
Tag:	Myc-DDK
Symbol:	Staufen
Synonyms:	PPP1R150; STAU
Mammalian Cell Selection:	Neomycin
Vector:	pCMV6-Entry (PS100001)
E. coli Selection:	Kanamycin (25 ug/mL)



[View online »](#)

ORF Nucleotide Sequence:

>RC218095 ORF sequence
 Red=Cloning site Blue=ORF Green=Tags(s)

TTTTGTAATACGACTCACTATAGGGCGGCCGGAATTCGTCGACTGGATCCGGTACCGAGGAGATCTGCC
 GCC**CGGATCGCC**

ATGAAACTTGAAAAAACAATGTATAAGCCTGTTGACCCTACTCTCGGATGCAGTCCACCTATAACT
 ACAACATGAGAGGAGGTCTTATCCCCGAGGACTTTTACCCATTTCAGTTCCACCTTTACTTTATCA
 AGTGGAACTTTCTGTGGGAGGACAGCAATTTAATGGCAAAGGAAAAGACAAGACAGGCTGCCAAAACACGAT
 GCTGCTGCCAAAGCGTTGAGGATCTGCAGAATGAGCCCCTGCCAGAGAGGCTGGAGGTGAATGGAAGAG
 AATCCGAAGAAGAAAATCTCAATAAATCTGAAATAAGTCAAGTGTGAGATTGCACTTAAACGGAAGTT
 GCCTGTGAATTTGAGGTTGGCCGGGAGAGTGGCCACCCACATGAAGAAGTTTGTGACCAAGGTTTCG
 GTTGGGGAGTTTGTGGGGGAAGGTGAAGGGAAAAGCAAGAAGATTTCAAAGAAAAATGCCCCATAGCTG
 TTCTTGAGGAGCTGAAGAAGTTACCGCCCTGCCTGCAGTTGAACGAGTAAAGCCTAGAATCAAAAAGAA
 AACAAAACCCATAGTCAAGCCACAGACAAGCCAGAAATATGGCCAGGGGATCAATCCGATTAGCCGACTG
 GCCCAGATCCAGCAGGCAAAAAAGGAGAAGGAGCCAGAGTACACGCTCCTCACAGAGCGAGGCTCCCGC
 GCCGCAGGGAGTTTGTGATGCAGGTGAAGTTGGAACCACACTGCAGAAGGAACGGGCACCAACAAGAA
 GGTGGCCAAGCGCAATGCAGCCGAGAACATGCTGGAGATCCTTGGTTTCAAAGTCCCGCAGGCGCAGCCC
 ACCAAACCCGCACTCAAGTCAGAGGAGAAGACCCATAAAGAAACCAGGGGATGGAAGAAAAGTAACTT
 TTTTGAACCTGGCTCTGGGGATGAAAAAGGACTAGTAATAAAGAGGATGAGTTGAGGATGCCTTATCT
 AAGTCATCAGCAGCTGCCTGCTGGAATCTTCCCATGGTCCCGAGGTCGCCAGGCTGTAGGAGTTAGT
 CAAGGCATCACACCAAGATTTTACCAGGGCAGCTCCGAATCCTGCCAAGGCCACGTTAACTGCCATGA
 TAGCCCGAGAGTTGTTGTATGGGGGCACCTCGCCACAGCCGAGACCATTTTAAAGAATAACATCTCTTC
 AGGCCACGTACCCCATGGACCTCTCACGAGACCCTCTGAGCAACTGGACTATCTTCCAGAGTCCAGGGA
 TTCCAGGTTGAATACAAAGACTTCCCCAAAAACAAGAAGCAATTTGTATCTTATCAATTGCTCCT
 CTCAGCCACCTCTGATCAGCCATGGTATCGGCAAGGATGTGGAGTCTGCCATGATATGGCTGCGCTGAA
 CATCTTAAAGTTGCTGTCTGAGTTGGACCAACAAAGTACAGAGATGCCAAGAACAGGAAACGGACCAATG
 TCTGTGTGTGGGAGGTGC

ACGCGTACGCGGCCGCTCGAGCAGAAACTCATCTCAGAAGAGGATCTGGCAGCAAATGATATCCTGGATT
 ACAAGGATGACGACGATAAGGTTTAA

Protein Sequence:

>RC218095 protein sequence
 Red=Cloning site Green=Tags(s)

MKLGKKPMYKVPDPYSRMQSTYNYNMRGGAYPPRYFYPFPVPLLYQVELSVGGQFNGKGRQAAKHD
 AAKALRILQNEPLPERLEVNGRESEENLNKSEISQVFEIALKRNLVNFVARESGPPHMKNFVTKVS
 VGEFVGEGERKSKKISKKNAAIAVLEELKKLPPLPAVERVKPRIKKTKPIVKPQTSPEYQGGINPISRL
 AQIQQAKKEKEPEYTLTERGLPRRREFVMQVKVGNHTAEGTGTNKKVAKRNAENMLEILGFKVPAQP
 TKPALKSEEKTIKPKGDGRKVTFFEPGSGDENGTSNKEDEFMPYLSHQQLPAGILPMVPEVAQVGV
 QGHHTKDFTRAAPNPAKATVTAMIARELLYGGTSPTAETILKNNISSGHVPHGPLTRPSEQLDYLSRVQG
 FQVEYKDFPKNNKNEFVSLINCSQPPLISHGIGKDVESCHDMAALNILKLLSELDDQSTEMPRTGNGPM
 SVCGR

TRTRPLEQKLISEEDLAANDILDYKDDDDKV

Chromatograms:

https://cdn.origene.com/chromatograms/mk6542_g09.zip

Restriction Sites:

Sgfl-Mlul

Cloning Scheme:


ACCN: NM_017452

ORF Size: 1488 bp

OTI Disclaimer: The molecular sequence of this clone aligns with the gene accession number as a point of reference only. However, individual transcript sequences of the same gene can differ through naturally occurring variations (e.g. polymorphisms), each with its own valid existence. This clone is substantially in agreement with the reference, but a complete review of all prevailing variants is recommended prior to use. [More info](#)

OTI Annotation: This clone was engineered to express the complete ORF with an expression tag. Expression varies depending on the nature of the gene.

Components: The ORF clone is ion-exchange column purified and shipped in a 2D barcoded Matrix tube containing 10ug of transfection-ready, dried plasmid DNA (reconstitute with 100 ul of water).

- Reconstitution Method:**
1. Centrifuge at 5,000xg for 5min.
 2. Carefully open the tube and add 100ul of sterile water to dissolve the DNA.
 3. Close the tube and incubate for 10 minutes at room temperature.
 4. Briefly vortex the tube and then do a quick spin (less than 5000xg) to concentrate the liquid at the bottom.
 5. Store the suspended plasmid at -20°C. The DNA is stable for at least one year from date of shipping when stored at -20°C.

RefSeq: [NM_017452.3](#)

RefSeq Size: 3399 bp

RefSeq ORF: 1491 bp

Locus ID: 6780

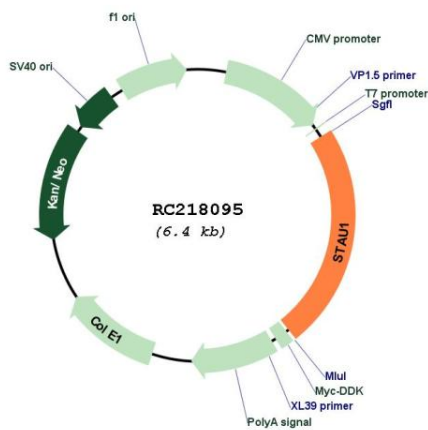
UniProt ID: [O95793](#)

Cytogenetics: 20q13.13

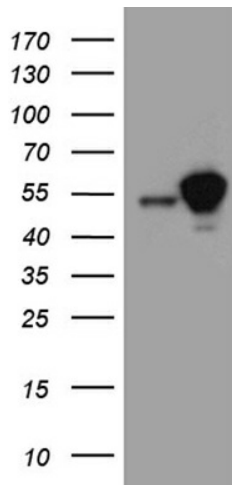
Domains: DSRM
MW: 54.9 kDa

Gene Summary: Staufen is a member of the family of double-stranded RNA (dsRNA)-binding proteins involved in the transport and/or localization of mRNAs to different subcellular compartments and/or organelles. These proteins are characterized by the presence of multiple dsRNA-binding domains which are required to bind RNAs having double-stranded secondary structures. The human homologue of staufen encoded by STAU, in addition contains a microtubule-binding domain similar to that of microtubule-associated protein 1B, and binds tubulin. The STAU gene product has been shown to be present in the cytoplasm in association with the rough endoplasmic reticulum (RER), implicating this protein in the transport of mRNA via the microtubule network to the RER, the site of translation. [provided by RefSeq, Apr 2020]

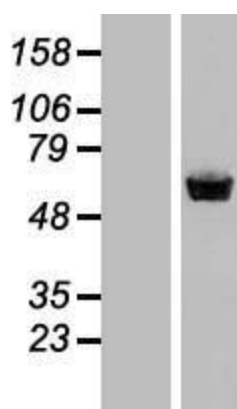
Product images:



Circular map for RC218095



HEK293T cells were transfected with the pCMV6-ENTRY control (Cat# [PS100001], Left lane) or pCMV6-ENTRY STAU1 (Cat# RC218095, Right lane) cDNA for 48 hrs and lysed. Equivalent amounts of cell lysates (5 ug per lane) were separated by SDS-PAGE and immunoblotted with anti-STAU1 (Cat# [TA811475])(1:2000). Positive lysates [LY429536] (100ug) and [LC429536] (20ug) can be purchased separately from OriGene.



Western blot validation of overexpression lysate (Cat# [LY413756]) using anti-DDK antibody (Cat# [TA50011-100]). Left: Cell lysates from untransfected HEK293T cells; Right: Cell lysates from HEK293T cells transfected with RC218095 using transfection reagent MegaTran 2.0 (Cat# [TT210002]).