

Product datasheet for **RC218088**

LTBP1 (NM_000627) Human Tagged ORF Clone

Product data:

Product Type:	Expression Plasmids
Product Name:	LTBP1 (NM_000627) Human Tagged ORF Clone
Tag:	Myc-DDK
Symbol:	LTBP1
Mammalian Cell Selection:	Neomycin
Vector:	pCMV6-Entry (PS100001)
E. coli Selection:	Kanamycin (25 ug/mL)
ORF Nucleotide Sequence:	>RC218088 representing NM_000627 Red=Cloning site Blue=ORF Green=Tags(s)

TTTTGTAATACGACTCACTATAGGGCGGCCGGAATTCGTCGACTGGATCCGGTACCGAGGAGATCTGCC
GCC**CGATCGCC**

ATGGATACTAAGCTGATGTGTTTGTGTTCTTTTTCTCCCTGCCTCCGCTCCTAGTGAGTAACCACACTG
GCCGCATCAAGGTGGTCTTTACTCCGAGCATCTGTAAAGTGACCTGCACCAAGGGCAGCTGTGAGAACAG
CTGTGAGAAGGGGAACACCACACTCTCATTAGTGAGAATGGTCATGCTGCCGACCCCTGACGGCCAGC
AACTCCGAGTGGTAATTTGCCATCTCCATGTATGAATGGTGGCCAGTGCAGTTCAAGGGACAAATGTC
AGTGCCCTCAAATTTACAGGAAAACCTTTGTCAGATCCCAGTCCATGGTCCAGCGTGCCTAAACTTTA
TCAGCATTCCCAGCAGCCAGGCAAGGCGTTGGGGACGCATGTCATCCATTCAACACATACCTTGCCTCTG
ACCGTGACTAGCCAGCAAGGAGTCAAAGTGAAATTTCTCCTAACATAGTCAATATCCATGTGAAACATC
CTCCTGAAGCTTCCGTCCAGATACATCAGGTTTCAAGAATTGATGGCCCAACAGGCCAGAAGACAAAAGA
AGCTCAACCAGGCCAATCCCAAGTCTCGTACCAAGGGCTTCTGTCCAGAAGACCCAGACCATACATTCC
ACATACTCCCACCAGCAGGTCAATCCTCACGTCTACCCCGTGGCTGCTAAGACACAGCTTGGCCGGTGT
TCCAGGAAACCATTGGGTACAGTGTGGCAAAGCGCTCCCTGGCCTTTCAAAGCAAGAGGACTGCTGTGG
AACTGTGGGTACCTCCTGGGCTTTAACAAATGCCAGAAATGCCCAAGAAACCATTATCATGGATAC
AACCAATGATGGAATGCCTACCGGTTATAAGCGGGTTAACAACACCTTTTGCCAAGATATTAATGAAT
GTCAGCTACAAGGTGATGCCCTAATGGTGAGTGTGTAATACCATGGGCAGCTATCGATGTACCTGCAA
AATAGGATTTGGCCGGATCCTACCTTTTCAAGTTGTGTTCTCTGATCCCCCTGTGATCTCGGAAGAGAAA
GGGCCCTGTACCGACTTGTGAGTCTGGAAGACAGTGTATGCACCCTCTGTCTGTTACCTCACCAGC
AGCTCTGCTGTTGAGTGTGGGCAAGGCCTGGGGCCCACTGTGAGAAATGTCCCTTCCAGGCACAGC
TGCTTTTAAAGGAAATCTGCTCGTGGTGAATGGTTATACGGTTTCTGGCGTTCATAGACGCAGGCCAATC
CATCACCATGTAGGTAAGGACCTGTATTTGTCAAGCCAAAGAACTCAACCTGTTGCTAAAAGTACTC
ATCCTCCACCTCTCCCAGCCAAGGAAGACCCAGTGGAGGCCCTGACCTTCTCCGGGAACACGGGCCAGG
AGTGGCGGAGCCAGAAGTGGCAACTGCACCCCTGAAAAGGAAATACCTTCATTGGATCAAGAGAAAACC
AAACTTGAGCCTGGTCAACCCAGCTGTCTCAGGCATTTCCACTATTCACTGCATCCACAGTTTCCAG
TAGTGATTGAAAAACATCACCTCCTGTGCCTGTTGAAGTAGCTCCTGAAGCTTCTACGTCTAGTGCCAG



[View online >](#)

CCAAGTGATTGCTCCTACTCAAGTGACAGAAATCAATGAATGACTGTGAACCCTGATATCTGTGGAGCA
GGACACTGCATTAACCTACCAGTGAGATATACCTGTATATGCTACGAGGGCTACAGGTTCAAGTGAACAAC
AGAGGAAATGTGTGGATATTGATGAGTGTACTCAGGTCCAACACCTCTGCTCCCAGGGCCGCTGTGAAAA
CACCGAGGGAAGTTTCTGTGCAATTTGCCAGCAGGATTTATGGCCAGTGAGGAGGTTACTAACTGCATA
GATGTTGACGAATGCCTGAGGCCGGACGCTGTGGGGAGGGGCACTGTGTCAACTGTGGGGCCCTTCC
GGTGTGAATACTGTGACAGCGGGTACCGCATGACTCAGAGAGGCCGTTGTGAGGATATTGATGAATGTTT
GAATCCAAGCACTTGTCCAGATGAGCAGTGTGTGAATTCCTGGATCTTACCAGTGCCTCCCTGCACA
GAAGGATCCGAGGCTGGAATGGACAGTGCCTTGTGTGGACGAGTGCCTGGAACCAACGCTCGCGCAA
ATGGTGATTGTTCCAACCTTGAAGGCTCCTACATGTGTTTATGCCACAAAAGGCTATACCCGACTCCGGA
CCACAAGCACTGTAGAGATATTGATGAATGTCAGCAAGGGAATCTATGTGTAAACGGGCAGTGCAAAAAT
ACCGAGGGCTCCTCAGGTGCACCTGTGGACAGGGGTACCAGCTGTGCGCAGCTAAAGACCAGTGTGAAG
ACATTGATGAATGCCAGCACCGTCATCTCTGTGCTCATGGGCAGTGCAGGAACACTGAGGGCTCTTTTCA
ATGTGTGTGTGACCAGGGTTACAGAGCATCTGGGCTTGGAGACCCTGTGAAGATATCAATGAATGCTTG
GAGGACAAGAGTGTGGCCAGAGAGGACTGCATTAATACTGCAGGGTCTATGATTGTACTTGTCCGG
ATGGATTTGAGTGTGACAATAAAACATGTCAAGATATTAATGAATGTGAACATCCAGGGCTCTGTGG
TCCGCAAGGGGAGTGCCTAAACACAGAGGGTCTTCCATTGTGTCTGCCAGCAGGGTTTCTCAATCTCT
GCAGATGGCCGTACGTGTGAAGATATTGATGAATGTGTAACAACACTGTTTGTGACAGTACCGGTTTT
GTGACAATACAGCTGGCTCCTCCGCTGCCTCTGTTATCAGGGCTTTCAAGCCCCACAGGATGGGCAAGG
GTGTGTGGATGTGAATGAATGTGAAGTGTGACTGAGTGGGGTGTGTGGTGAAGCCTTCTGTGAAAACGTGGAA
GGGTCTTCTGTGCGTGTGTGCTGATGAAAACCAAGAGTACAGCCCCATGACTGGGCAGTGCCTGCTCC
GGACCTCCACAGATTTAGATGTAGATGTAGATCAACCCAAAGAAGAAAAGAAAGAATGCTACTATAATCT
CAATGACGCCAGTCTCTGTGATAATGTGTTGGCCCCAATGTACGAAACAAGAATGCTGCTGTACATCA
GGCGCGGATGGGAGATAAAGTGCAGAACTTCCCTGCCCGTCTGGGAACACTGCTGATGTTCACTGAAA
TGTGTCCCAAAGGAAAGGTTTTGTGCCTGGAGAAATCATCTTCTGAAGCTGGTGGTGAAGACTATAA
AGATGCAGATGAATGCCTACTTTTTGGACAAGAAATCTGCAAAAATGTTTTCTGTTTGAACACTCGGCT
GGGTATGAATGCTACTGTAAGCAAGGGACGTAATGATCCTGTGAAACTGCAGTGTCTTGTATGGATG
AATGTCAAGACCCAGTAGTTGTATTGATGGCCAGTGTGTTAATACAGAGGGCTCTTACAACCTGCTTCTG
TACTCACCCCATGGTCTGGATGCGTCAGAAAAAGATGTATACGACCGGCTGAGTCAAACGAACAATA
GAAGAACTGATGTCTACCAAGATTTGTGCTGGGAACATCTGAGTGTGAATACGTGTGTAGCCGGCCTC
TTGTGGCAAGCAGACAACGTACACTGAGTGTGCTGTCTGTATGGAGAGGCTGGGCATGCAGTGTGC
CCTCTGCCCCCTGAAGGATTCAGATGACTATGCTCAGCTGTGTAACATCCCCGTGACGGGACGCCGGCAG
CCATATGGACGGGACGCCTTGGTTGACTTCAGTGAACAGTATACTCCAGAAGCCGATCCCTACTTCAATCC
AAGACCGTTTTCTAAATAGCTTTGAGGAGTTACAGGCTGAGGAATGCGGCATCCTCAATGGATGTGAAAA
TGGTGCCTGTGTGAGGGTCCAGGAAGGTTACACCTGCGATTGCTTTGATGGGTATCACTTGGATACGGCC
AAGATGACCTGTGTGATGTAATGAATGCGATGAGTTGAACAACCGGATGTCTCTCTGCAAGAATGCCA
AGTGCATTAACACCGATGGTTCTACAAGTGTGTTGTGCTGCCAGGCTACGTGCCTCTGACAAGCCAAA
CTACTGCACTCCGTTGAATACCGCCTTGAATTTAGAGAAAGACAGTGACCTGGAG

ACGCGTACGCGGCCGCTCGAGCAGAACTCATCTCAGAAGAGGATCTGGCAGCAAATGATATCCTGGATT
ACAAGGATGACGACGATAAGGTTTAA

Protein Sequence: >RC218088 representing NM_000627
 Red=Cloning site Green=Tags(s)

MDTKLMCLLFFFSLPPLLVSNHTGRIKVVFTSPICKVCTKGGSCQNSCEKGNNTTLLISENGHAADTLTAT
 NFRVVIICHLPCMNGGQCSSRDKQCPPNFTGKLCQIPVHGASVPKLYQHSQQPGKALGTHVIHSTHTLPL
 TVTSQQGVKVKFPPNIVNIHVKHPPPEASVQIHQVSRIDGPTGQKTKEAQPGSQVSYQGLPVQKTQTIHS
 TYSHQQVIPHVYPVAAKTQLGRCFQETIGSQCGKALPGLSKQEDCCGTGTSWGFKKCKCPKPKPSYHGY
 NQMMCECLPGYKRVNNTFCQDINECQLQGVCPNGECLNTMGSYRCKIGFGPDPFSSCVDPPISEEK
 GPCYRLVSSGRQCMHPLSVHLTKQLCCSSVGKAWGPHCEKCLPGTAAAFKEICPGMGMYTVSGVHRRRPI
 HHHVHGKPVFVKPKNTQPAKSTHPPPLPAKEEPVEALTFREHGPGVAEPEVATAPPEKEIPSLDQEK
 KLEPGQPQLSPGISTIHLPQFPVIEKTSPPVPVEVAPEASTSSASQVIAPTQVTEINECTVNPDI
 GCA GHCINLPVRYTCICYEGYRFSEQQRKCDIDECTQVQHLCSQGRCENTEGSFLCICPAGFMASEEGTNCI
 DVDECLRPDVCGEHCVNTVGAFRCEYCDSGYRMTQRGRCEIDDECLNPSTCPDEQCVNSPGSYQVCPCT
 EGFGRWNGQCLDVDECLPNVCANGDCSNLEGSYMC SCHKGYTRTPDHKHC RDIDE CQQGNLCVNGQCKN
 TEGSFRC TCGQGYQL SAAKDQCEDIDECQHRHLCAHGQCRNTEGSFQCVCDQGYRASGLGDHCE
 DINECL EDKSVQC RGDICINTAGSYDCTCPDGFQLDDNKTCQDINECEHPGLCGPQGECLNTEGSFHC
 VCQQGFSIS ADGRTCEDIDECVNNTVCDSHGFC DNTAGSFRCLCYQGFQAPQDGGQCV DVNECELL
 SGVCGEAFENVE GSFLCVCADENQEYSPMTGQCRSRTSTDLDVDVDPKEEKKECYNLNDA
 SLCDNVLAPNVTKQECCTS GAGWGDNCEIFPCPVLTAEFTMCPKGGFVPAGESSEAGGENYKDA
 DECLLFQGEICKNGFCLNTRP GYECYCKQGTYYDPVKLQCFDMDECQDPSSCIDGQCVNTEGSYNCF
 CTHPMVLDASEKRCIRPAESNEQI EETDVYQDLWEHL SDEYVCSRPLVGKQTTYTECCCLYGEAWGMQ
 CALCPLKDSDDYAQLCNIPVTGRRQ PYGRDALVDFSEQYTP EADPYFIQDRFLNSFEELQAE
 ECGILNGCENGRVVRVQEGYTCDCFDG YHLDTA KMTCDVYNECDELNNRMSLCKNAK
 CINTDGSYKCLCLPGYVPSDKPNYCTPLNTALNLEKDSLE

TRTRPLEQKLISEEDLAANDILDYKDDDDKV

Restriction Sites:

SgfI-MluI

Cloning Scheme:



ACCN: NM_000627

ORF Size: 4185 bp

OTI Disclaimer: Due to the inherent nature of this plasmid, standard methods to replicate additional amounts of DNA in E. coli are highly likely to result in mutations and/or rearrangements. Therefore, OriGene does not guarantee the capability to replicate this plasmid DNA. Additional amounts of DNA can be purchased from OriGene with batch-specific, full-sequence verification at a reduced cost. Please contact our customer care team at custsupport@origene.com or by calling 301.340.3188 option 3 for pricing and delivery.

The molecular sequence of this clone aligns with the gene accession number as a point of reference only. However, individual transcript sequences of the same gene can differ through naturally occurring variations (e.g. polymorphisms), each with its own valid existence. This clone is substantially in agreement with the reference, but a complete review of all prevailing variants is recommended prior to use. [More info](#)

OTI Annotation: This clone was engineered to express the complete ORF with an expression tag. Expression varies depending on the nature of the gene.

Components: The ORF clone is ion-exchange column purified and shipped in a 2D barcoded Matrix tube containing 10ug of transfection-ready, dried plasmid DNA (reconstitute with 100 ul of water).

Reconstitution Method:

1. Centrifuge at 5,000xg for 5min.
2. Carefully open the tube and add 100ul of sterile water to dissolve the DNA.
3. Close the tube and incubate for 10 minutes at room temperature.
4. Briefly vortex the tube and then do a quick spin (less than 5000xg) to concentrate the liquid at the bottom.
5. Store the suspended plasmid at -20°C. The DNA is stable for at least one year from date of shipping when stored at -20°C.

RefSeq: [NM_000627.3](#), [NP_000618.3](#)

RefSeq Size: 5308 bp

RefSeq ORF: 4188 bp

Locus ID: 4052

UniProt ID: [Q14766](#)

Cytogenetics: 2p22.3

Domains: EGF_CA, TB, EGF, EGF

Protein Families: Druggable Genome, Secreted Protein

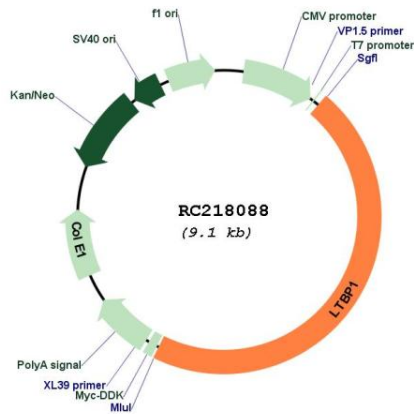
Protein Pathways: TGF-beta signaling pathway

MW: 152.9 kDa

Gene Summary:

The protein encoded by this gene belongs to the family of latent TGF-beta binding proteins (LTBPs). The secretion and activation of TGF-betas is regulated by their association with latency-associated proteins and with latent TGF-beta binding proteins. The product of this gene targets latent complexes of transforming growth factor beta to the extracellular matrix, where the latent cytokine is subsequently activated by several different mechanisms. Alternatively spliced transcript variants encoding different isoforms have been identified. [provided by RefSeq, Jul 2008]

Product images:



Circular map for RC218088