

## Product datasheet for RC218087

### RASSF6 (NM\_201431) Human Tagged ORF Clone

#### Product data:

Product Type:	Expression Plasmids
Product Name:	RASSF6 (NM_201431) Human Tagged ORF Clone
Tag:	Myc-DDK
Symbol:	RASSF6
Mammalian Cell Selection:	Neomycin
Vector:	pCMV6-Entry (PS100001)
E. coli Selection:	Kanamycin (25 ug/mL)
ORF Nucleotide Sequence:	>RC218087 representing NM_201431 Red=Cloning site Blue=ORF Green=Tags(s)

TTTTGTAATACGACTCACTATAGGGCGGCCGGGAATTCGTCGACTGGATCCGGTACCGAGGAGATCTGCC  
GCC**CGATCGCC**

ATGCTCTGGGAGGAGACAGGGCGCCGCCCTGCGCCGCGCGGGCCTCGGACCTCCCCTACAGGATATCCT  
CAGACCATCTCAAAAAGGAGGAAAAGATGACTATGATGGCTCACCAGTACCCCTCTTGGATCTTCATTA  
TGAGAAGACATTCATAACCAGGGAACAACCTAATCTTTATTGAAGACCTATAACATTTTTATGAGAAC  
CAGAAAAATCTGCATATTTATATGGAGAGACTGAAGATGGCAAACCTAATTGTTGAAGGAATGCTGGACA  
TTTTCTGGGGAGTAAAACGACCTATACAGCTAAAAATACAAGATGAGAAGCCATTCTCTTTACTAG  
TATGAAGTCATCAGACGCTTCTCCAGCAAAGGAATGACACGCTGGGGGAATTTGACGATCTCTATCGT  
ATTAGTGAGCTGGACAGGACCCAGATTCCTATGTCTGAAAAAGGAATCCAGGAAGACTATTTATCTT  
ATCACAGCAACACCCTGAAGCCACATGCAAAGGATGAACCAAGACTCCCCAGTGCTCTATAGAACCATGAG  
TGAAGCAGCTCTGGTGAGAAAAAGGATGAAGCCTCTGATGATGGACAGAAAAGAAAGACAGAAAAATAGA  
GCCTCTATTAATGGACACTTCTATAACCATGAAACATCAATTTTCATTCCAGCCTTTGAATCAGAAACTA  
AGGTCAGAGTAAACAGTAACATGAGAACTGAAGAAGTAATAAAGCAACTTCTCAAAAAATTAAGATTGA  
AAATAGTCCCAGGATTTTCTCTTACATTATTTTGAACAGGAGAAACAAAGCAGACTAAAGAAGACA  
GACATTCGCTACTGCAGAGGCTCTACAGGGACCTTCTGAAAAGAAATGCTCGCATTTTCTCATGGATA  
AAGATGCAGAAGAAATTAGCAGTGATGTGGCTCAGTACATTAACCTTTCATTTTCTCTTGGAAATCCAT  
TCTTCAAAGATTAATGAAGAAGAGAAAAGAGAGATTCAAAGAATAGTAACAAAATTCATTAAGAAAAAG  
GCGATTATACTGAAATGTCTTCAAAAATAAACTAGTAATAAAAACAGAGACAACAGTT

**ACGCGT**ACGCGGCCGCTCGAGCAGAAACTCATCTCAGAAGAGGATCTGGCAGCAATGATATCCTGGATT  
ACAAGGATGACGACGATAAGGTTTAA



[View online »](#)

**Protein Sequence:** >RC218087 representing NM\_201431  
Red=Cloning site Green=Tags(s)

MLWEETGAAPAPARASDLPIRISDHLKKEEKMMAHQYPSWIFINEKTFITREQLNSLLKTYNIFYEN  
 QKNLHILYGETEDGKLIVEGMLDIFWGVKRPQLKIQDEKPFSSFTSMKSSDVFSSKGMTRWGEFDDLYR  
 ISELDRTQIPMSEKRNSQEDYLSYHSNTLKPHAKDEPDSPVLYRTMSEALVRKRMKPLMMDRKERQKNR  
 ASINGHFYNHETSIFIPAFESETKVRVNSNMRTTEEVIKQLLQKFKIENSPQDFALHIIFATGEQRRLKKT  
 DIPLLQRLLQGPSEKNARIFLMDKDAEEISSDVAQYINHFHSLLESILQRLNEEEKREIQRIVTKFNKEK  
 AIILKCLQNKLVIKTETTV

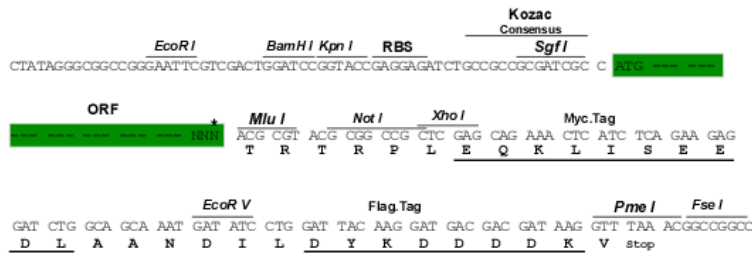
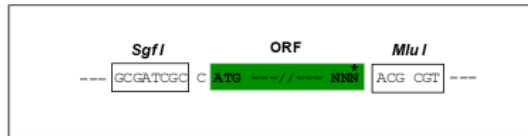
TRTRPLEQKLISEEDLAANDILDYKDDDDKV

**Chromatograms:** [https://cdn.origene.com/chromatograms/mk8015\\_f12.zip](https://cdn.origene.com/chromatograms/mk8015_f12.zip)

**Restriction Sites:** SgfI-MluI

**Cloning Scheme:**

Cloning sites used for ORF Shuttling:



\* The last codon before the Stop codon of the ORF

**ACCN:** NM\_201431

**ORF Size:** 1107 bp

**OTI Disclaimer:** The molecular sequence of this clone aligns with the gene accession number as a point of reference only. However, individual transcript sequences of the same gene can differ through naturally occurring variations (e.g. polymorphisms), each with its own valid existence. This clone is substantially in agreement with the reference, but a complete review of all prevailing variants is recommended prior to use. [More info](#)

**OTI Annotation:** This clone was engineered to express the complete ORF with an expression tag. Expression varies depending on the nature of the gene.

**Components:** The ORF clone is ion-exchange column purified and shipped in a 2D barcoded Matrix tube containing 10ug of transfection-ready, dried plasmid DNA (reconstitute with 100 ul of water).

**Reconstitution Method:**

1. Centrifuge at 5,000xg for 5min.
2. Carefully open the tube and add 100ul of sterile water to dissolve the DNA.
3. Close the tube and incubate for 10 minutes at room temperature.
4. Briefly vortex the tube and then do a quick spin (less than 5000xg) to concentrate the liquid at the bottom.
5. Store the suspended plasmid at -20°C. The DNA is stable for at least one year from date of shipping when stored at -20°C.

**RefSeq:** [NM\\_201431.2](#), [NP\\_958834.1](#)

**RefSeq Size:** 4323 bp

**RefSeq ORF:** 1110 bp

**Locus ID:** 166824

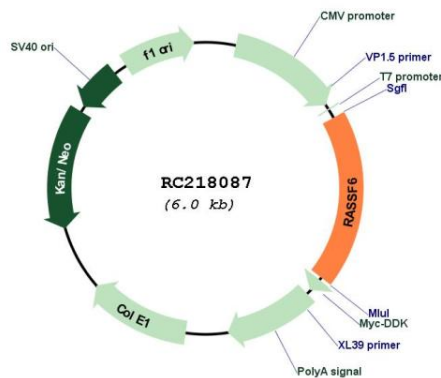
**UniProt ID:** [Q6ZTQ3](#)

**Cytogenetics:** 4q13.3

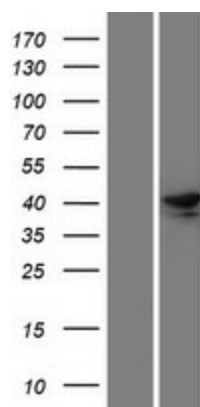
**MW:** 43.2 kDa

**Gene Summary:** This gene encodes a member of the Ras-association domain family (RASSF). Members of this family form the core of a highly conserved tumor suppressor network, the Salvador-Warts-Hippo (SWH) pathway. The protein encoded by this gene is a Ras effector protein that induces apoptosis. A genomic region containing this gene has been linked to susceptibility to viral bronchiolitis. Alternative splicing results in multiple transcript variants and protein isoforms. [provided by RefSeq, Jul 2012]

**Product images:**



Circular map for RC218087



Western blot validation of overexpression lysate (Cat# [LY404413]) using anti-DDK antibody (Cat# [TA50011-100]). Left: Cell lysates from untransfected HEK293T cells; Right: Cell lysates from HEK293T cells transfected with RC218087 using transfection reagent MegaTran 2.0 (Cat# [TT210002]).