

Product datasheet for RC218086

CLIP170 (CLIP1) (NM_198240) Human Tagged ORF Clone

Product data:

Product Type:	Expression Plasmids
Product Name:	CLIP170 (CLIP1) (NM_198240) Human Tagged ORF Clone
Tag:	Myc-DDK
Symbol:	CLIP170
Synonyms:	CLIP; CLIP-170; CLIP170; CYLN1; RSN
Mammalian Cell Selection:	Neomycin
Vector:	pCMV6-Entry (PS100001)
E. coli Selection:	Kanamycin (25 ug/mL)
ORF Nucleotide Sequence:	>RC218086 representing NM_198240 Red=Cloning site Blue=ORF Green=Tags(s)

TTTTGTAATACGACTCACTATAGGGCGGCCGGAATTCGTCGACTGGATCCGGTACCGAGGAGATCTGCC
GCC**CGATCGCC**

ATGAGTATGCTAAAGCCAAGTGGGCTTAAGGCCCCACCAAGATCCTGAAGCCTGGAAGCACAGCTCTGA
AGACACCTACGGCTGTTGTAGCTCCAGTAGAAAAACCATATCCAGTGAAAAAGCATCAAGCACTCCATC
ATCTGAGACTCAGGAGGAATTTGTGGATGACTTTCGAGTTGGGGAGCGAGTTTGGTGAATGAAATAAG
CCTGGATTTATCCAGTTTCTGGAGAAACCCAGTTTCACCAGGCCAGTGGGCTGGAATTTTGTAGATG
AACCCATAGGCAAGAACGATGGTTCGGTGGCAGGAGTTCGGTATTTCCAGTGTGAACCTTAAAGGGCAT
ATTTACCCGACCTCAAAGTTAACAAGGAAGGTGCAAGCAGAAGATGAAGCTAATGGCCTGCAGACAACG
CCCGCCTCCCGAGCTACTTCACCCTGTGCACTTCTACGGCCAGCATGGTGTCTTCTCCCTCCACCC
CTTCAAACATCCCTCAGAAACCATCACAGCCAGCAGAAAGGAACCTTCAGCTACGCCTCCGATCAGCAA
CCTTACAAAACTGCCAGTGAATCTATCTCAACCTTTCAGAGGCTGGCTCAATCAAGAAAGGAGAAAGA
GAGCTCAAAATCGGAGACAGAGTATTGGTTGGTGGCACTAAGGCTGGTGTAGTCCGGTTTCTGGGGAGA
CCGACTTTGCCAAGGGGAGTGGTGTGGCGTGGAGTTAGATGAGCCACTGGGAAGAATGATGGCGCTGT
TGCTGGAACAAGTATTTTCAGTGTCAACCCAAATATGGCTTGTTCGCTCCTGTCCACAAAGTTACCAAG
ATTGGCTTCCCTTCCACTACACCAGCCAAGCCAAGCCAAGCCAGTGAAGCCAGTGGCCAGTGGCCAGCCAGT
CCGCCAGCTGAAGCGCAGCCCTTCTGCCTCTTCCCTCAGCTCCATGAGCTCAGTGGCCTCTCTGTGAG
CAGCAGGCCAGTCCGACAGGACTATTGACTGAAACCTCTCCCGTTACGCCAGGAAGATCTCCGGTACC
ACTGCCCTCCAGGAGGCCCTGAAGGAGAAGCAGCAGCACATTGAGCAGCTGCTGGCGGAACGGGATCTGG
AGAGGGCGGAGGTGGCCAAGGCCACGAGCCACGTGGGGGAGATAGAGCAGGAGCTAGCTCTGGCCCGGA
CGGACATGACCAGCATGTCTGGAATTGGAAGCCAAAATGGACCAGTGCGAACAATGGTGAAGCTGCT
GACAGGGAGAAGGTGGAGCTTCTCAACCAGCTTGAAGAGGAGAAAAGGAAGTTGAGGACCTTCAGTTCC
GGGTTGAAGAAGAATCAATTACCAAAGGTGATCTTGAGGTGGCTACAGTTTCAGAAAAGTACGTATAAT
GGAAGTGGAGAAAGACCTAGCATTGAGAGTACAGGAAGTAGCTGAGCTCCGAAGAAGGCTAGAGTCCAAT



[View online >](#)

AAGCCTGCTGGGGATGTGGACATGTCACCTTTCCCTTTTGAAGAGATAAGCTCTTTGCAAGAAAAGTTAG
AAGTCACCCGTAAGTACCAGAGAGAAAATAACTTCTCTGAAGGAGCATTGTTGGAGCCCGGAAGAAAC
TCATCAGAAGGAGATAAAGGCTCTGTATACCGCCACGGAAAAGCTTTCCAAAGAGAACGAGTCATTGAAA
AGCAAGCTGGAGCATGCCAACAAAGAGAACTCAGATGTGATAGCTCTATGGAAGTCCAACTGGAGACTG
CCATCGCATCCCACCAGCAGGCGATGGAAGAAGTGAAGGTATCTTTCAGCAAAGGCTTGGAACAGAGAC
GGCAGAATTTGCTGAACAAAAACAAAATAGAGAAAAATGAGACTAGATTACCAACACGAAATAGAAAAT
TTGCAGAATCAACAAGACTCTGAACGGGCTGCCATGCTAAAGAGATGGAAGCCTTGAGGGCTAAACTGA
TGAAGTTATTAAGAAAAGGAAAACAGTCTGGAAGCCATCAGGTCGAACTGGACAAAGCAGAAGACCA
GCATCTCGTAGAAATGGAAGACAGTAAACAAAATTACAGGAAGCTGAAATAAAGGTAAAGGAGCTAGAG
GTAAGTGAAGCCAAATGCAATGAACAAACCAAGGTTATTGATAATTTTACATCACAGCTCAAGGCTACTG
AAGAAAAGCTCTGGATCTTGATGCACTTCGGAAGCCAGTTCGGAAGGTAATCGGAAATGAAGAACT
TAGACAGCAGCTTGGAGCAGCTGAGAAACAGATTAACATTTAGAGATTGAAAAGAATGCTGAAAGTAGC
AAGGCTAGTAGCATTACCAGAGAGCTCCAGGGGAGAGAGCTAAAGCTTACTAACCTTCAGGAAAATTTGA
GTGAAGTCAGTCAAGTGAAGAGACTTTGGAAAAAGAACTTCAGATTTTGAAGAAAAGTTTGTGAAGC
TTCAGAGGAGGCAGTCTCTGTTCCAGAGAAGTATGCAAGAACTGTAATAAGTTACACAAAAGGAGGAA
CAGTTTAAACATGCTGCTTCTGACTTGGAGAAGCTGAGAGAAAACCTAGCAGATATGGAGGCAAAATTTA
GAGAGAAAAGATGAGAGAGAAGAGCAGCTGATAAAGGCAAAAGGAAAAACTGGAAAATGACATTGCAGAAAT
AATGAAGATGTCAGGAGATAACTCTTCTCAGCTGACAAAATGAACGATGAATTACGCTGAAAGAAAAGA
GATGTAGAAGAATTACAGCTAAAACCTACAAAAGGCTAATGAAAATGAAGTTTTCTGCAAAAAGTATTG
AGGACATGACTGTCAAAGCTGAACAGAGCCAGCAAGAAGCAGCTAAAAGCATGAGGAAGAAAAGAAAGA
ATTGGAGAGGAAATGTCGGACCTGGAAAAGAAAATGGAAACAAGCCACAACCAAGTGTGAGGAGCTGAAA
GCCAGGTATGAGAGAGCCACTTCTGAGACAAAACCAAGCATGAAGAAAATCCTACAGAACCTCCAGAAGA
CGCTGCTGGACACAGAGACAAGCTGAAGGGCGCACGGGAGGAGAACAGTGGCTTGTGCAAGGAGCTGGA
GGAGCTGAGAAAAGCAAGCCGACAAAGCCAAAGCTGCTCAACAGCGGAAGATGCCATGCAGATAATGGAA
CAGATGACCAAAGAGAAGACTGAGACTCTGGCCTCCTTGGAGGACACCAAGCAAACAAATGCAAAAAC
AGAATGAATTGGACACACTTAAAGAAAACAACCTGAAAAATGTGGAAGAGCTGAACAAAATCAAAAAGAACT
CCTGACTGTAGAGAATCAAAAAATGGAAGAATTTAGGAAAAGAAATAGAAACCCTAAAGCAGGCAGCAGCT
CAGAAAGTCCCAGCAGCTTTCAGCGTTGCAAGAAGAGAACGTTAACTTGTGAGGAGCTGGGAGAAAGCA
GGGACGAAGTACAAGTCATCAAAGCTGGAAGAAGAAAGATCTGTGCTCAATAATCAGTTGTTAGAAAT
GAAAAAAGAGAATCCAAGTTCATAAAAAGACGCAGATGAAGAGAAAGCTTCTTGCAGAAATCCATCAGT
ATAACTAGTGCCTTACTCACAGAAAAGGATGCCGAGCTGGAGAACTGAGAAATGAGGTCACAGTGTCTCA
GGGAGAAAACGCTCTGCCAAGTCCTTGCAATTAGTTGTTTCCAGACTCTAGAGTCTGATAAGGTGAAGCT
CGAGCTCAAGGTAAGAACTTGGAGCTTCAACTCAAAGAAAACAAGAGGCAGCTCAGCAGCTCCTCAGGT
AATACAGACACTCAGGCAGACGAGGATGAAAGAGCCAGGAGAGTCAAGTTGATTTCCTAAATTCAGTAA
TAGTGGACCTTCAAAGGAAGAAATCAAGACCTCAAGATGAAGGTGGAGATGATGTCAGAAGCAGCCCTGAA
TGGGAACGGGGATGACCTAAACAATTATGACAGTGTGATCAGGAGAAACAGTCCAAGAAGAAACCTCGC
CTCTTCTGTGACATTTGTGACTGCTTTGATCTCCACGACACAGAGGATTGCTCCTACCCAGGCACAGATGT
CAGAGGACCTCCCATCCACACCATGGCAGTCGGGGTGAGGAACGCCCATACTGTGAAATCTGTGA
GATGTTTGGACTGGGCCACCAACTGCAATGACGACGAAACCTTC

ACGCGTACGCGGCCGCTCGAGCAGAACTCATCTCAGAAGAGGATCTGGCAGCAATGATATCCTGGATT
ACAAGGATGACGACGATAAGGTTTAA

Protein Sequence: >RC218086 representing NM_198240
Red=Cloning site Green=Tags(s)

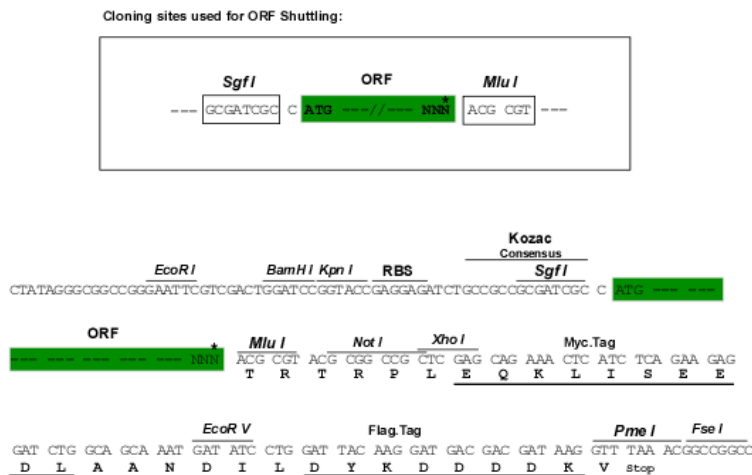
```
MSMLKPSGLKAPTILKPGSTALKTPTAVVAPVEKTISSEKASSTPSSETQEEFVDDFRVGERVWVWNGNK
PGFIQLGETQFAPGQWAGIVLDEPIGKNDGSVAGVRYFQCEPLKGI FTRPSKL TRKVQAEDEANGLQTT
PASRATSPLCTSTASMVSSPSTPSNIPQKPSQPAAKEPSATPPI SNLTKTASEISNLSEAGSIKKGER
ELKIGDRVLVGGTKAGVVRFLGETDFAKGEWCGVELDEPLGKNDGAVAGTRYFQCQPKYGLFAPVHKVTK
IGFPSTTPAKAKANAVRRVMATTASLKRSPSASSLSSMSSVASSVSRPSRTGLLTETSSRYARKISGT
TALQEALKEKQQHIEQLLAERDLERAEVAKATSHVGEIEQELALARDGHDQHVLELEAKMDQLRTMVEAA
DREKVELLNQL EEEKRVEDLQFRVEEESITKGDLEVATVSEKSRIMELEKDLALRVQEVAE LRRRLESN
KPGAGDVMSLSLLQEISSLQEKLEVTRTDHQREITSLKEHFGAREETHQKEIKALYTATEKLSKENESLK
SKLEHANKENSVDIALWKSLETAIASHQQAMEELKVSFSGKLGTTETAFAELKTQIEKMRLDYQHEIEN
LQNQQDSERAHAHAKEMEALRAKLMKVIKEKENSLEAIRSKLDKAEDQHLVEMEDTLNKLQEA EIKVKELE
VLQAKCNEQTKVIDNFTSQLKATEEKL DLDALRKASSEGKSEMKKLRQQL EAAEKQIKHLEIEKNAESS
KASSITRELQGRELKL TNLQENLSEVSQVKETLEKELQILKEKFAEASEEAVSVQRSMQETV NKLHQKEE
QFNMLSSDLEKLRNLADMEAKFREKDEREEQLIKAKEKLENDIAEIMKMSGDNSSQLTKMNDLRLKER
DVEELQLKLTANENASFLQKSIEDMTVKAEQSQQEAAKKHEEEKELERKLS DLEKKMETSHNQCELK
ARYERATSETKTKHEEILQNLQKTL DLTEDKLGAREENSGLLQEEELRKQADKAKAAQTAEDAMQIME
QMTKEKTETLASLEDTKQTNAKLQNELDTLKENNLKNVEELNKSHELLTVENQKMEEF RKEIETLKQAAA
QKSQQLSALQEENVKLA EELGRSRDEVTSHQKLEEERSVLNNQLLEMKKRESKF IKDADEEKASLQKSI
ITSALLTEKDAELEKLRNEVTVLRGENASAKSLHSVVQ TLESDKVKLELKVKNLELQLKENKRQLSSSSG
NTDTQADEDERAQESQIDFLNSVIVDLQRKNQDLKMKVEMMSEALNGNGDDLNNYSDDDQEKQSKKKPR
LFCIDICDFDLHDTEDCPTQAQMS EDPHSTHHGSRGEERP YCEICEMFGHWATNCNDDETF
```

TRTRPLEQKLISEEDLAANDILDYKDDDDKV

Chromatograms: https://cdn.origene.com/chromatograms/mk8101_a09.zip

Restriction Sites: SgfI-MluI

Cloning Scheme:



* The last codon before the Stop codon of the ORF

ACCN: NM_198240

ORF Size: 4176 bp

OTI Disclaimer: Due to the inherent nature of this plasmid, standard methods to replicate additional amounts of DNA in E. coli are highly likely to result in mutations and/or rearrangements. Therefore, OriGene does not guarantee the capability to replicate this plasmid DNA. Additional amounts of DNA can be purchased from OriGene with batch-specific, full-sequence verification at a reduced cost. Please contact our customer care team at custsupport@origene.com or by calling 301.340.3188 option 3 for pricing and delivery.

The molecular sequence of this clone aligns with the gene accession number as a point of reference only. However, individual transcript sequences of the same gene can differ through naturally occurring variations (e.g. polymorphisms), each with its own valid existence. This clone is substantially in agreement with the reference, but a complete review of all prevailing variants is recommended prior to use. [More info](#)

OTI Annotation: This clone was engineered to express the complete ORF with an expression tag. Expression varies depending on the nature of the gene.

Components: The ORF clone is ion-exchange column purified and shipped in a 2D barcoded Matrix tube containing 10ug of transfection-ready, dried plasmid DNA (reconstitute with 100 ul of water).

Reconstitution Method:

1. Centrifuge at 5,000xg for 5min.
2. Carefully open the tube and add 100ul of sterile water to dissolve the DNA.
3. Close the tube and incubate for 10 minutes at room temperature.
4. Briefly vortex the tube and then do a quick spin (less than 5000xg) to concentrate the liquid at the bottom.
5. Store the suspended plasmid at -20°C. The DNA is stable for at least one year from date of shipping when stored at -20°C.

RefSeq: [NM_198240.2](#)

RefSeq Size: 5793 bp

RefSeq ORF: 4179 bp

Locus ID: 6249

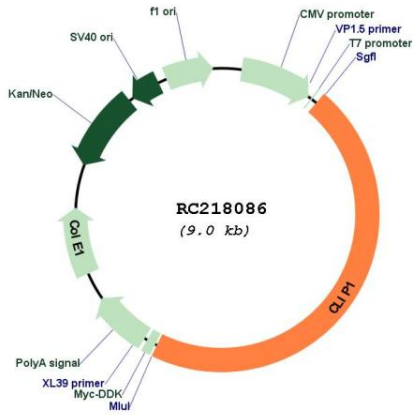
UniProt ID: [P30622](#)

Cytogenetics: 12q24.31

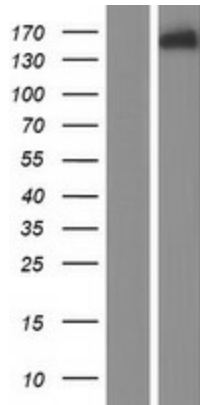
MW: 156.8 kDa

Gene Summary: The protein encoded by this gene links endocytic vesicles to microtubules. This gene is highly expressed in Reed-Sternberg cells of Hodgkin disease. Several transcript variants encoding different isoforms have been found for this gene. [provided by RefSeq, Oct 2011]

Product images:



Circular map for RC218086



Western blot validation of overexpression lysate (Cat# [LY404961]) using anti-DDK antibody (Cat# [TA50011-100]). Left: Cell lysates from untransfected HEK293T cells; Right: Cell lysates from HEK293T cells transfected with RC218086 using transfection reagent MegaTran 2.0 (Cat# [TT210002]).