

Product datasheet for **RC218055**

PPM1A (NM_177951) Human Tagged ORF Clone

Product data:

Product Type:	Expression Plasmids
Product Name:	PPM1A (NM_177951) Human Tagged ORF Clone
Tag:	Myc-DDK
Symbol:	PPM1A
Synonyms:	PP2C-ALPHA; PP2CA; PP2Calpha
Mammalian Cell Selection:	Neomycin
Vector:	pCMV6-Entry (PS100001)
E. coli Selection:	Kanamycin (25 ug/mL)
ORF Nucleotide Sequence:	>RC218055 representing NM_177951 Red=Cloning site Blue=ORF Green=Tags(s)

TTTTGTAATACGACTCACTATAGGGCGGCCGGAATTCGTCGACTGGATCCGGTACCGAGGAGATCTGCC
GCC**CGATCGCC**

ATGGGAGCATTTTTAGACAAGCCAAAGATGAAAAAGCATAATGCCAGGGGCAGGGTAATGGGTTGCGAT
ATGGGCTAAGCAGCATGCAAGGCTGGCGTGTGAAATGGAGGATGCACATACGGCTGTGATCGGTTTGCC
AAGTGGACTTGAATCGTGGTCATTCTTTGCTGTGTATGATGGGCATGCTGGTTCTCAGGTTGCCAAATAC
TGCTGTGAGCATTGTTAGATCACATCACCAATAACCAGGATTTAAAGGGTCTGCAGGAGCACCTTCTG
TGGAAAAATGTAAGAATGGAATCAGAACAGTTTTCTGGAGATTGATGAACACATGAGAGTTATGTCAGA
GAAGAAACATGGTGCAGATAGAAGTGGTCAACAGCTGTAGGTGTCTTAATTTCTCCCAACATACTTAT
TTCATTAAGTGTGGAGACTCAAGAGTTTTACTTTGTAGGAACAGGAAAGTTCATTTCTTCACACAAGATC
ACAAACCAAGTAATCCGCTGGAGAAAGAACGAATTCAGAATGCAGGTGGCTCTGTAATGATTCAGCGTGT
GAATGGCTCTCTGGCTGTATCGAGGGCCCTTGGGGATTTTGATTACAAATGTGTCCATGGAAAAGGTCTC
ACTGAGCAGCTTGTCTCACCAGAGCCTGAAGTCCATGATATTGAAAGATCTGAAGAAGATGATCAGTTCA
TTATCCTTGCATGTGATGGTATCTGGGATGTTATGGGAAATGAAGAGCTCTGTGATTTTGTAAAGTCCAG
ACTTGAAGTCACTGATGACCTTGAGAAAGTTTGAATGAAGTGTGACACCTGTTTGTATAAGGGAAGT
CGAGACAACATGAGTGTGATTTTGTATCTGTTTTCCAAATGCACCCAAAGTATCGCCAGAAGCAGTGAAGA
AGGAGGCAGAGTTGGACAAGTACCTGGAATGCAGAGTAGAAGGTGGATCATTTAAACAAAAA

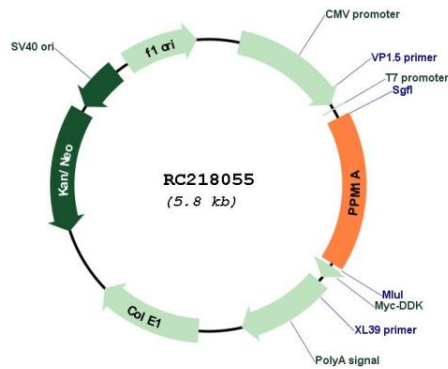
ACGCGTACGCGGCCGCTCGAGCAGAAACTCATCTCAGAAGAGGATCTGGCAGCAATGATATCCTGGATT
ACAAGGATGACGACGATAAGGTTTAA



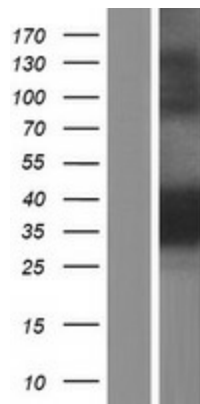
[View online »](#)

Reconstitution Method:	<ol style="list-style-type: none">1. Centrifuge at 5,000xg for 5min.2. Carefully open the tube and add 100ul of sterile water to dissolve the DNA.3. Close the tube and incubate for 10 minutes at room temperature.4. Briefly vortex the tube and then do a quick spin (less than 5000xg) to concentrate the liquid at the bottom.5. Store the suspended plasmid at -20°C. The DNA is stable for at least one year from date of shipping when stored at -20°C.
RefSeq:	NM_177951.3
RefSeq Size:	2373 bp
RefSeq ORF:	975 bp
Locus ID:	5494
UniProt ID:	P35813
Cytogenetics:	14q23.1
Protein Families:	Druggable Genome, Phosphatase
Protein Pathways:	MAPK signaling pathway
MW:	35.8 kDa
Gene Summary:	<p>The protein encoded by this gene is a member of the PP2C family of Ser/Thr protein phosphatases. PP2C family members are known to be negative regulators of cell stress response pathways. This phosphatase dephosphorylates, and negatively regulates the activities of, MAP kinases and MAP kinase kinases. It has been shown to inhibit the activation of p38 and JNK kinase cascades induced by environmental stresses. This phosphatase can also dephosphorylate cyclin-dependent kinases, and thus may be involved in cell cycle control. Overexpression of this phosphatase is reported to activate the expression of the tumor suppressor gene TP53/p53, which leads to G2/M cell cycle arrest and apoptosis. Three alternatively spliced transcript variants encoding distinct isoforms have been described. [provided by RefSeq, Jul 2008]</p>

Product images:



Circular map for RC218055



Western blot validation of overexpression lysate (Cat# [LY406056]) using anti-DDK antibody (Cat# [TA50011-100]). Left: Cell lysates from untransfected HEK293T cells; Right: Cell lysates from HEK293T cells transfected with RC218055 using transfection reagent MegaTran 2.0 (Cat# [TT210002]).