

## Product datasheet for **RC218053**

### **SHE (NM\_001010846) Human Tagged ORF Clone**

#### **Product data:**

Product Type:	Expression Plasmids
Product Name:	SHE (NM_001010846) Human Tagged ORF Clone
Tag:	Myc-DDK
Symbol:	SHE
Mammalian Cell Selection:	Neomycin
Vector:	pCMV6-Entry (PS100001)
E. coli Selection:	Kanamycin (25 ug/mL)



[View online »](#)

**ORF Nucleotide Sequence:**

>RC218053 ORF sequence  
 Red=Cloning site Blue=ORF Green=Tags(s)

TTTTGTAATACGACTCACTATAGGGCGGCCGGGAATTCGTCGACTGGATCCGGTACCGAGGAGATCTGCC  
 GCC**CGGATCGCC**

ATGCAGTGGTCCCCGACCCTGGCGCCTCTGCGTGTCTGGGCTGGGCTTCTCGCTCGCCTGCTCCACGG  
 CCCGACGCTCCTGGGCCGAGCCGGCCGGGCCCCCTCATGGCGCCAAGTGGTTCAAGGAGTTCCCCCT  
 GAACCTGAAGACCGTGTGCGGAGCGGCCAAGCCCGGGGGCGGCGCGGCAAAATTGCGCAAGAAGCTCGGAG  
 GCGGGCGGCGCTGGGCCGGTCTTGGCAAGGGCCGAAGAAGCTCGGCGGCCGAGCTGGGAGCGGCAGGG  
 CCGGCGTCCGCCCAAGGACAGCCGGTGTCCCGCAGACCTGCAGGCTGATTACAGCCGCCCGGG  
 CAAGGGCCGAAAACTCCCGGCCACGGAGGAGGCCACCAGGGTGAACCAAGAGCTCGGGCTGC  
 AGCACCTACATCAACAGGCTCATCAAGGTGGACTCAGGAGAAGAAGCGGAAGCAACTACCCAGCA  
 GCAGTAGCTCCAGCTCCAGCTCCTTCTCCGCTCCTTCCCTTCTCCCTGGGGCCGAGCTGGA  
 CAAGGGCAAGATTATTAAGCAGCAAGAGACGGTCAATTTTAGAAGACTATGCTGACCCTATGATGCC  
 AAACGGACAAGGGTCAAAGGGATGCAGAGAGAGTCGGAGAGAAGCAGCGTTACATGGAACCATATGATG  
 CACAGCAATGATAACAGAAATTAGACGACGGGTTCCAAAGATCCCCTGGTGAAGGCTCTCCAGCTGCT  
 TGACAGTCCCTGTGAACCCGACAGCGTGGCCTGAAATCAGAGACCTTGCCAAAAGACGGAGTTCCAAG  
 GACCTCCTGGGAAGCCGCCACAGCTATACGACTCCCTACGAGCTGCAGAAGGGGGCCAGGGCAG  
 AGGGGAAGGCGCGGCCCCAGACAGCCGGTGCAGGAGAACGACGAGAGGCCCGCGGCAGAGTACGAGCA  
 GCCATGGGAGTGAAGAAGGAGCAGATCGTGGGGCTCTGTCAGTCCAGTTTGAAGGAGCTGAGCGACCT  
 TCCTTCAGGGAGGACAGTGAAGGAGAGAAAGTGGACCCGGGCTGCCCTGGAGAAGCAGCCCTGGTCA  
 CCCTCTCGGACCACAGTGAAGGAGAGAAAGTGGACCCGGGCTGCCCTGGAGAAGCAGCCCTGGTCA  
 TGGTGCCATCAGCCGTGCTGAGGCTGAGAGTCGACTACAGCCCTGCAAAGAAGCTGGTTACCTGGTTCGA  
 AATAGTGAGTCAGGAACAGCAGGTAATCCATTGCCCTAAAGACTAGTCAAGGATGTGTCCACATCATAG  
 TGGCTCAGACAAAGACAACAAATACACTGAATCAGACAAGCGCTGTGTTGACAGCATCCCTGAAGT  
 GGTACACTATTATCCAATGAAAAGTTGCCTTTCAAAGGGCAGAACACATGACTTTACTCTACCCAGTG  
 CACAGCAAGCTTCAC

**ACGCGT**ACGCGGCCGCTCGAGCAGAAACTCATCTCAGAAGAGGATCTGGCAGCAATGATATCCTGGATT  
 ACAAGGATGACGACGATAAGGTTTAA

**Protein Sequence:**

>RC218053 protein sequence  
 Red=Cloning site Green=Tags(s)

MQWSPTPGASACLGWASSLACSTAPTLGRAGRGPLMAAKWFKEFPLNLKTVSERAKPGGGGKLRKNSE  
 AGGAGPGPGKGRKNSAELGSRAGVGPKDSRLSRDSLQGLIQAAAGKGRKNSRATEEPHRGATKSSGC  
 STYINRLIKVDTQEKNKSNYPSSSSSSSSSSSSSSSSPSSLPPELDKGIKIQQETVIILEDYADPYDA  
 KRTKGQRDAERVGENDGYMEPYDAQMITEIRRRGSKDPLVKALQLLDSPCEPADGGLKSETLAKRRSSK  
 DLLGKPPQLYDTPYEPAEAGPRAEGKARPPDSRLPENDERPAEYEQPWEWKKEQIVRALSVQFEGAERP  
 SFREETVRQHHRQKSWTQKILKPALSDHSEGEKVDPLPLEKQPWYHGAI SRAEAE SRLQPCKEAGYLVR  
 NSESGNSRYSIALKTSQGCVHIIVAQTNDKNYTLNQTSAVFDSIPEVVHYYSNEKLPFKGAEHMTLLYPV  
 HSKLH

**TR**TRPLEQKLI SEEDLAANDILDYKDDDDKV

**Chromatograms:**

[https://cdn.origene.com/chromatograms/mk6463\\_d07.zip](https://cdn.origene.com/chromatograms/mk6463_d07.zip)

**Restriction Sites:**

Sgfl-MluI

Cloning Scheme:



ACCN: NM\_001010846

ORF Size: 1485 bp

OTI Disclaimer: The molecular sequence of this clone aligns with the gene accession number as a point of reference only. However, individual transcript sequences of the same gene can differ through naturally occurring variations (e.g. polymorphisms), each with its own valid existence. This clone is substantially in agreement with the reference, but a complete review of all prevailing variants is recommended prior to use. [More info](#)

OTI Annotation: This clone was engineered to express the complete ORF with an expression tag. Expression varies depending on the nature of the gene.

Components: The ORF clone is ion-exchange column purified and shipped in a 2D barcoded Matrix tube containing 10ug of transfection-ready, dried plasmid DNA (reconstitute with 100 ul of water).

Reconstitution Method:

1. Centrifuge at 5,000xg for 5min.
2. Carefully open the tube and add 100ul of sterile water to dissolve the DNA.
3. Close the tube and incubate for 10 minutes at room temperature.
4. Briefly vortex the tube and then do a quick spin (less than 5000xg) to concentrate the liquid at the bottom.
5. Store the suspended plasmid at -20°C. The DNA is stable for at least one year from date of shipping when stored at -20°C.

RefSeq: [NM\\_001010846.3](#)

RefSeq Size: 6186 bp

RefSeq ORF: 1488 bp

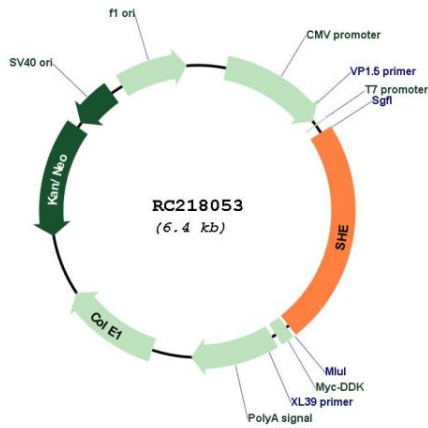
Locus ID: 126669

UniProt ID: [Q5VZ18](#)

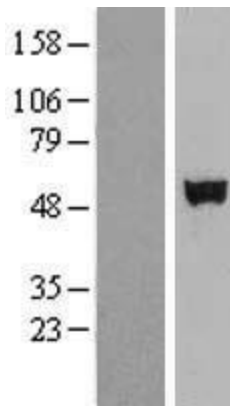
Cytogenetics: 1q21.3

MW: 54 kDa

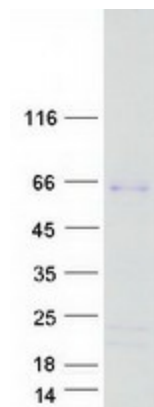
Product images:



Circular map for RC218053



Western blot validation of overexpression lysate (Cat# [LY423180]) using anti-DDK antibody (Cat# [TA50011-100]). Left: Cell lysates from untransfected HEK293T cells; Right: Cell lysates from HEK293T cells transfected with RC218053 using transfection reagent MegaTran 2.0 (Cat# [TT210002]).



Coomassie blue staining of purified SHE protein (Cat# [TP318053]). The protein was produced from HEK293T cells transfected with SHE cDNA clone (Cat# RC218053) using MegaTran 2.0 (Cat# [TT210002]).