

Product datasheet for RC218049

OR9Q2 (NM_001005283) Human Tagged ORF Clone

Product data:

Product Type:	Expression Plasmids
Product Name:	OR9Q2 (NM_001005283) Human Tagged ORF Clone
Tag:	Myc-DDK
Symbol:	OR9Q2
Synonyms:	OR9Q2P
Mammalian Cell Selection:	Neomycin
Vector:	pCMV6-Entry (PS100001)
E. coli Selection:	Kanamycin (25 ug/mL)
ORF Nucleotide Sequence:	>RC218049 representing NM_001005283 Red=Cloning site Blue=ORF Green=Tags(s)

TTTTGTAATACGACTCACTATAGGGCGGCCGGAATTCGTCGACTGGATCCGGTACCGAGGAGATCTGCC
GCC**CGGATCGCC**

ATGGCTGAAAGGAATTACACCGTAGTGACGGAGTTCTTCCTTACTGCATTTACTGAACATCTCCAGTGGA
GGGTTCCCTCTTCTCATATTTTTGAGTTTCTATCTTGCCACTATGTTAGGGAACACAGGCATGATCCT
CCTGATCCGTGGCGATCGTCGGCTCCACACCCCGATGACTTCTCCTCAGCCACCTTTCCTTGGTGGAC
ATCTGCTACTCGTCCGCCATCATCCCTCAGATGCTGGCTGTGCTGTGGGAGCACGGCACAACCATCTCCC
AGGCTCGCTGTGCAGCTCAGTTCTCCTCTTACCTTCTTGCCTCCATCGACTGCTACCTTCTGGCCAT
CATGGCCTATGACCGCTACACGGCCGTGTGCCAGCCCCTGCTTTATGTCACCATCATAACCGAGAAGGCC
CGCTGGGGCCTAGTCACTGGGGCTTACGTTGCTGGTTTTTTCAGTGCCTTTGTTGCAACGGTCACAGCCT
TCACTCTCTCCTTTGTGGAAACAATGAGATCAACTTCATTTTCTGTGACCTCCCTCCTCTATTAAGAACT
CTCCTGTGGGGACAGCTACACTCAGGAAGTGGTGATTATTGTGTTTGTCTTTTCGTCATGCCTGCCTGT
ATCTTGGTGATCTTGGTATCCTACCTGTTTATCATTGTGGCCATCCTGCAGATCCACTCTGCTGGAGGCC
GGGCAAGACCTTCTCCACCTGCGCCTCCACCTCACTGCCGTCGCTCTTTTCTTGGCACCCCTCATCTT
CATGTACCTGCGAGACAACACAGGCCAGTCCCTCCGAGGGAGACCGAGTGGTGTCTGTGCTTACACGGTG
GTGACCCCAATGCTGAATCCCTTATCTATAGCCTGAGAAACAAGGAGGTAAAAGAGGCCACTAGGAAAG
CCCTGAGCAAATCAAAGCCTGCTAGAAGACCC

ACGCGTACGCGGCCGCTCGAGCAGAAACTCATCTCAGAAGAGGATCTGGCAGCAAATGATATCCTGGATT
ACAAGGATGACGACGATAAGGTTTAA



[View online »](#)

Protein Sequence: >RC218049 representing NM_001005283
Red=Cloning site Green=Tags(s)

MAERNYTVVTEFFLTAFTTEHLQWRVPLFLIFLSFYLATMLGNTGMILLIRGDRRLHTPMYFFLSHLSLVD
 ICYSSAIIPQMLAVLWEHGTTISQARCAAQFFLFTFFASIDCYLLAIMAYDRYTAVCQPLLYVTIITEKA
 RWGLVTGAYVAGFFSAFVRTVTAFTLSFCGNNEINFIFCDLPPLLKLSGDSYEQEVVIVFALFVMPAC
 ILVLVSYLFIIVAILQIHSAGGRAKTFSTCASHLTAVALFFGTLIFMYLRDNTGQSSEGDRVSVLYTV
 VTPMLNPLIYSLRNKEVKEATRKALSKSKPARRP

TRTRPLEQKLISEEDLAANDILDYKDDDDKV

Chromatograms: https://cdn.origene.com/chromatograms/mk8003_f11.zip

Restriction Sites: SgfI-MluI

Cloning Scheme:



ACCN: NM_001005283

ORF Size: 942 bp

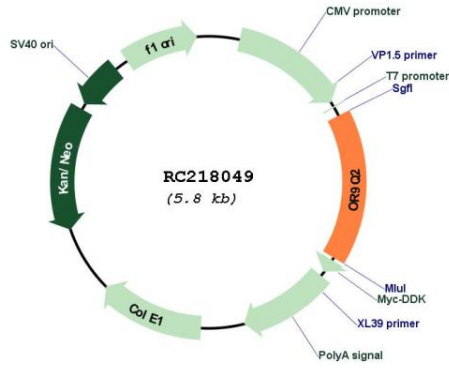
OTI Disclaimer: The molecular sequence of this clone aligns with the gene accession number as a point of reference only. However, individual transcript sequences of the same gene can differ through naturally occurring variations (e.g. polymorphisms), each with its own valid existence. This clone is substantially in agreement with the reference, but a complete review of all prevailing variants is recommended prior to use. [More info](#)

OTI Annotation: This clone was engineered to express the complete ORF with an expression tag. Expression varies depending on the nature of the gene.

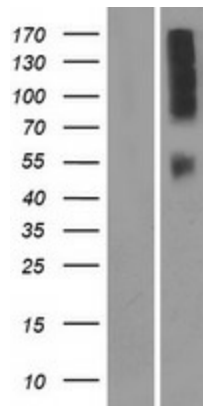
Components: The ORF clone is ion-exchange column purified and shipped in a 2D barcoded Matrix tube containing 10ug of transfection-ready, dried plasmid DNA (reconstitute with 100 ul of water).

Reconstitution Method:	<ol style="list-style-type: none">1. Centrifuge at 5,000xg for 5min.2. Carefully open the tube and add 100ul of sterile water to dissolve the DNA.3. Close the tube and incubate for 10 minutes at room temperature.4. Briefly vortex the tube and then do a quick spin (less than 5000xg) to concentrate the liquid at the bottom.5. Store the suspended plasmid at -20°C. The DNA is stable for at least one year from date of shipping when stored at -20°C.
RefSeq:	NM_001005283.2 , NP_001005283.1
RefSeq Size:	945 bp
RefSeq ORF:	945 bp
Locus ID:	219957
UniProt ID:	Q8NGE9
Cytogenetics:	11q12.1
Protein Families:	Transmembrane
Protein Pathways:	Olfactory transduction
MW:	35.2 kDa
Gene Summary:	Olfactory receptors interact with odorant molecules in the nose, to initiate a neuronal response that triggers the perception of a smell. The olfactory receptor proteins are members of a large family of G-protein-coupled receptors (GPCR) arising from single coding-exon genes. Olfactory receptors share a 7-transmembrane domain structure with many neurotransmitter and hormone receptors and are responsible for the recognition and G protein-mediated transduction of odorant signals. The olfactory receptor gene family is the largest in the genome. The nomenclature assigned to the olfactory receptor genes and proteins for this organism is independent of other organisms. [provided by RefSeq, Jul 2008]

Product images:



Circular map for RC218049



Western blot validation of overexpression lysate (Cat# [LY423842]) using anti-DDK antibody (Cat# [TA50011-100]). Left: Cell lysates from untransfected HEK293T cells; Right: Cell lysates from HEK293T cells transfected with RC218049 using transfection reagent MegaTran 2.0 (Cat# [TT210002]).