

Product datasheet for **RC218048**

LBX1 (NM_006562) Human Tagged ORF Clone

Product data:

Product Type:	Expression Plasmids
Product Name:	LBX1 (NM_006562) Human Tagged ORF Clone
Tag:	Myc-DDK
Symbol:	LBX1
Synonyms:	homeobox; HPX-6; HPX6; LBX1H
Mammalian Cell Selection:	Neomycin
Vector:	pCMV6-Entry (PS100001)
E. coli Selection:	Kanamycin (25 ug/mL)
ORF Nucleotide Sequence:	>RC218048 representing NM_006562 Red=Cloning site Blue=ORF Green=Tags(s)

TTTTGTAATACGACTCACTATAGGGCGGCCGGAATTCGTCGACTGGATCCGGTACCGAGGAGATCTGCC
GCC**CGATCGC**C

ATGACTTCCAAGGAGGACGGCAAGGCGGCGCGGGGAGGAGCGGCGCGCAGCCCGCTGGACCACCTGC
CTCCGCTGCCAACTCCAACAAGCCACTGACGCCGTTTCAGCATCGAGGACATCCTCAACAAGCCGTCTGT
GCGGAGAAGTTACTCGCTGTGCGGGGCGGCGCACCTGCTGGCCGCGCGGACAAGCACGCGCAGGGCGGC
TTGCCCTGGCGGCGCGCTGCTCTCGCAGACCTCGCCGCTGTGCGCGCTGGAGGAGCTCGCCAGCA
AGACGTTTAAGGGGCTGGAGTACGCTTCTGCAGGCAGCGAAGGCCGCGACGGTATGACCATCTTTGG
GCAGCGCAGACCCCTAAGAAGCGGCGAAAGTCGCGCACGGCCTTACCACCACAGATCTATGAATTG
GAAAAGCGCTTTCTATACCAGAAGTACCTGTCCCGCGGATCGCGACCAATCGCGCAGCAGCTGGGCC
TCACCAACCGCAAGTCATCACCTGTTCCAGAATCGGCGCGCTAAGCTCAAGCGGGACCTGGAGGAGAT
GAAGGCCGACGTAGAGTCCGCCAAGAACTGGGCCCGAGCGGCAGATGGACATCGTGGCGCTGGCCGAA
CTCGAGCAGAACTCGGAGGCCACAGCCGGCGGTGGCGGCGGTGCGGCAGGGCCAAGTCGAGGCCCGGCT
CTCCGGTCTCCCCAGGCGCCCCGAAGGCCCGGGCGCTGGCGCCTGCAGCTCTCGCTGCCTCTCC
GCTCACGGACAGCCGGCCAGCAGCCAGGACTGCTCGGAGGACGAGGAAGACGAAGAGATCGACGTGGAC
GAT

ACGCGTACGCGGCGCTCGAGCAGAACTCATCTCAGAAGAGGATCTGGCAGCAAATGATATCCTGGATT
ACAAGGATGACGACGATAAGGTTTAA



[View online »](#)

Protein Sequence: >RC218048 representing NM_006562
Red=Cloning site Green=Tags(s)

MTSKEDGKAAPGEERRRSPLDHLPPPANSNKPLTPFSIEDILNKPSVRRSYSLCGAAHLLAAADKHAQGG
 LPLAGRALLSQTSPLEALEELASKTFKLEVSVLQAAEGRDGMTIFGQRQTPKRRRSRTAFTNHQIYEL
 EKRFLYQKYLSPADDRDQIAQQLGLTNAQVITWFQNRRAKLRDLEEMKADVESAKKLGPSGQMDIVALAE
 LEQNSEATAGGGGGCGRAKSRPGSPVLPAGAPKAPGAGALQLSPASPLTDQPASSQDCSEDEEEDVIDVD
 D

TRTRPLEQKLISEEDLAANDILDYKDDDDKV

Chromatograms: https://cdn.origene.com/chromatograms/ja1267_d03.zip

Restriction Sites: SgfI-MluI

Cloning Scheme:



ACCN: NM_006562

ORF Size: 843 bp

OTI Disclaimer: The molecular sequence of this clone aligns with the gene accession number as a point of reference only. However, individual transcript sequences of the same gene can differ through naturally occurring variations (e.g. polymorphisms), each with its own valid existence. This clone is substantially in agreement with the reference, but a complete review of all prevailing variants is recommended prior to use. [More info](#)

OTI Annotation: This clone was engineered to express the complete ORF with an expression tag. Expression varies depending on the nature of the gene.

Components: The ORF clone is ion-exchange column purified and shipped in a 2D barcoded Matrix tube containing 10ug of transfection-ready, dried plasmid DNA (reconstitute with 100 ul of water).

Reconstitution Method:

1. Centrifuge at 5,000xg for 5min.
2. Carefully open the tube and add 100ul of sterile water to dissolve the DNA.
3. Close the tube and incubate for 10 minutes at room temperature.
4. Briefly vortex the tube and then do a quick spin (less than 5000xg) to concentrate the liquid at the bottom.
5. Store the suspended plasmid at -20°C. The DNA is stable for at least one year from date of shipping when stored at -20°C.

RefSeq: [NM_006562.4](#), [NP_006553.2](#)

RefSeq Size: 1287 bp

RefSeq ORF: 846 bp

Locus ID: 10660

UniProt ID: [P52954](#)

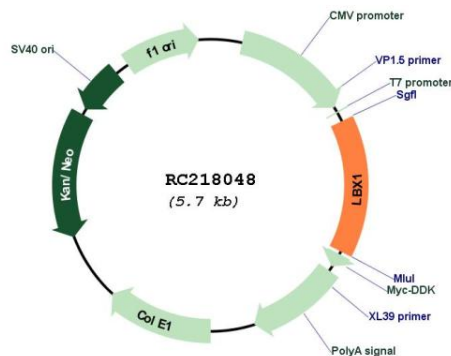
Cytogenetics: 10q24.32

Protein Families: Transcription Factors

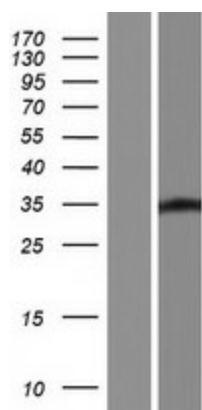
MW: 30 kDa

Gene Summary: This gene and the orthologous mouse gene were found by their homology to the Drosophila lady bird early and late homeobox genes. In the mouse, this gene is a key regulator of muscle precursor cell migration and is required for the acquisition of dorsal identities of forelimb muscles. [provided by RefSeq, Jul 2008]

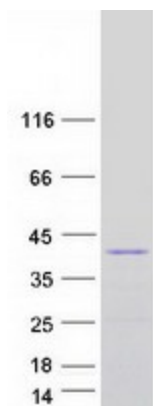
Product images:



Circular map for RC218048



Western blot validation of overexpression lysate (Cat# [LY416561]) using anti-DDK antibody (Cat# [TA50011-100]). Left: Cell lysates from untransfected HEK293T cells; Right: Cell lysates from HEK293T cells transfected with RC218048 using transfection reagent MegaTran 2.0 (Cat# [TT210002]).



Coomassie blue staining of purified LBX1 protein (Cat# [TP318048]). The protein was produced from HEK293T cells transfected with LBX1 cDNA clone (Cat# RC218048) using MegaTran 2.0 (Cat# [TT210002]).