

Product datasheet for **RC218042**

CLIC1 (NM_001288) Human Tagged ORF Clone

Product data:

Product Type: Expression Plasmids
Product Name: CLIC1 (NM_001288) Human Tagged ORF Clone
Tag: Myc-DDK
Symbol: CLIC1
Synonyms: CL1C1; CLCNL1; G6; NCC27
Mammalian Cell Selection: Neomycin
Vector: pCMV6-Entry (PS100001)
E. coli Selection: Kanamycin (25 ug/mL)
ORF Nucleotide Sequence: >RC218042 representing NM_001288
Red=Cloning site Blue=ORF Green=Tags(s)

TTTTGTAATACGACTCACTATAGGGCGGCCGGAATTCGTCGACTGGATCCGGTACCGAGGAGATCTGCC
GCC**CGATCGCC**

ATGGCTGAAGAACAACCGCAGGTCAATTGTTTCGTAAGGCTGGCAGTGATGGGGCCAAGATTGGGAACT
GCCATTCTCCCAGAGACTGTTTCATGGTACTGTGGCTCAAGGGAGTCACCTTCAATGTTACCACCGTTGA
CACAAAAGGCGGACCGAGACAGTGCAGAAGCTGTGCCAGGGGGCAGCTCCCATTCTGCTGTATGGC
ACTGAAGTGCACACAGACACCAACAAGATTGAGGAATTTCTGGAGGCAGTGTGTCCTCCAGGTACC
CCAAGCTGGCAGCTCTGAACCTGAGTCCAACACAGCTGGGCTGGACATATTTGCCAAATTTCTGCCTA
CATCAAGAATTCAAACCCAGCACTCAATGACAATCTGGAGAAGGGACTCCTGAAAGCCCTGAAGGTTTTA
GACAATTACTTAACATCCCCCTCCCAGAAGAAGTGGATGAAACCAAGTGTGAAGATGAAGGTGTCTCTC
AGAGGAAGTTTTGGATGGCAACGAGCTCACCTGGCTGACTGCAACCTGTTGCCAAAGTTACACATAGT
ACAGGTGGTGTGAAGAAGTACCGGGATTACCATCCCCGAGGCCTCCGGGGAGTGCATCGGTACTTG
AGCAATGCCTACGCCCGGAAGAATTCGCTTCCACCTGTCCAGATGATGAGGAGATCGAGCTCGCCTATG
AGCAAGTGGCAAAGGCCCTCAA

ACGCGTACGCGGCCGCTCGAGCAGAACTCATCTCAGAAGAGGATCTGGCAGCAAATGATATCCTGGATT
ACAAGGATGACGACGATAAGGTTTAA



[View online »](#)

Protein Sequence: >RC218042 representing NM_001288
 Red=Cloning site Green=Tags(s)

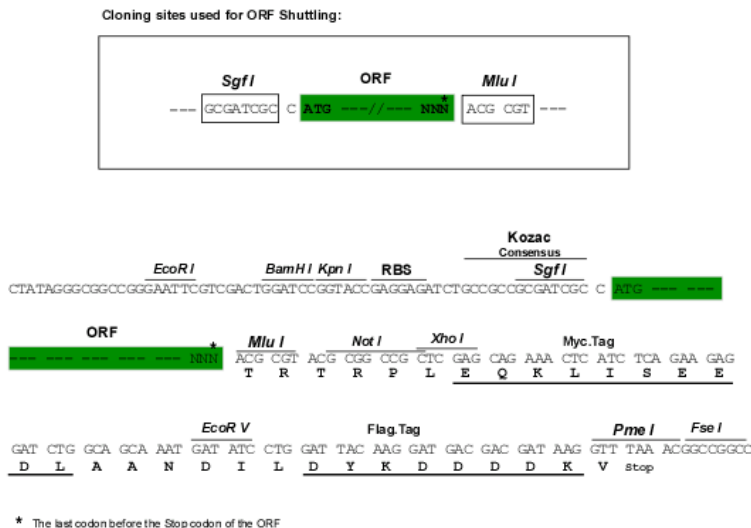
MAEEQPQVELFVKAGSDGAKIGNCPFSQRLFMVLWLVKGVTFNVTTVDTKRRTETVQKLCPPGGQLPFLLYG
 TEVHTDNTKIEEFLEAVLCPFRYPKLAALNPESNTAGLDIFAKFSAYIKNSNPALNDNLEKGLLKALKVL
 DNYLTSPLPEEVDETSAEDEGVSQRKFLDGNELTLADCNLLPKLHIVQVVCKYRGFTIPEAFRQVHRYL
 SNAYAREEFACPDDEEIELAYEQVAKALK

TRTRPLEQKLISEEDLAANDILDYKDDDDKV

Chromatograms: https://cdn.origene.com/chromatograms/mk6106_g02.zip

Restriction Sites: SgfI-MluI

Cloning Scheme:



ACCN: NM_001288

ORF Size: 723 bp

OTI Disclaimer: The molecular sequence of this clone aligns with the gene accession number as a point of reference only. However, individual transcript sequences of the same gene can differ through naturally occurring variations (e.g. polymorphisms), each with its own valid existence. This clone is substantially in agreement with the reference, but a complete review of all prevailing variants is recommended prior to use. [More info](#)

OTI Annotation: This clone was engineered to express the complete ORF with an expression tag. Expression varies depending on the nature of the gene.

Components: The ORF clone is ion-exchange column purified and shipped in a 2D barcoded Matrix tube containing 10ug of transfection-ready, dried plasmid DNA (reconstitute with 100 ul of water).

Reconstitution Method:

1. Centrifuge at 5,000xg for 5min.
2. Carefully open the tube and add 100ul of sterile water to dissolve the DNA.
3. Close the tube and incubate for 10 minutes at room temperature.
4. Briefly vortex the tube and then do a quick spin (less than 5000xg) to concentrate the liquid at the bottom.
5. Store the suspended plasmid at -20°C. The DNA is stable for at least one year from date of shipping when stored at -20°C.

RefSeq: [NM_001288.4](#), [NP_001279.2](#)

RefSeq Size: 1265 bp

RefSeq ORF: 726 bp

Locus ID: 1192

UniProt ID: [O00299](#)

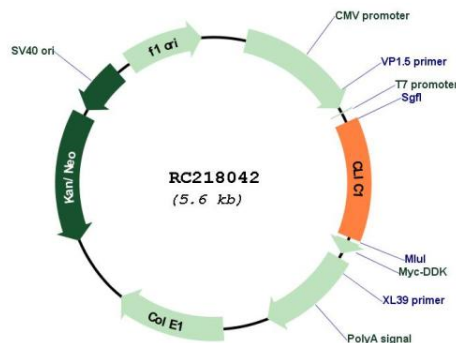
Cytogenetics: 6p21.33

Protein Families: Druggable Genome, Ion Channels: Other

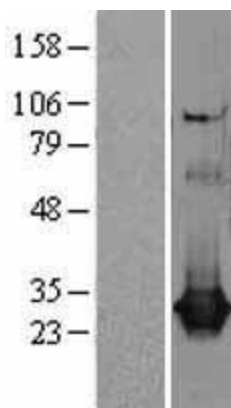
MW: 26.7 kDa

Gene Summary: Chloride channels are a diverse group of proteins that regulate fundamental cellular processes including stabilization of cell membrane potential, transepithelial transport, maintenance of intracellular pH, and regulation of cell volume. Chloride intracellular channel 1 is a member of the p64 family; the protein localizes principally to the cell nucleus and exhibits both nuclear and plasma membrane chloride ion channel activity. [provided by RefSeq, Jul 2008]

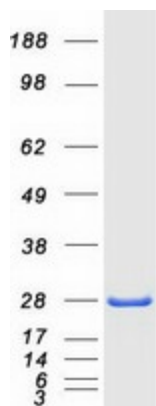
Product images:



Circular map for RC218042



Western blot validation of overexpression lysate (Cat# [LY400515]) using anti-DDK antibody (Cat# [TA50011-100]). Left: Cell lysates from untransfected HEK293T cells; Right: Cell lysates from HEK293T cells transfected with RC218042 using transfection reagent MegaTran 2.0 (Cat# [TT210002]).



Coomassie blue staining of purified CLIC1 protein (Cat# [TP318042]). The protein was produced from HEK293T cells transfected with CLIC1 cDNA clone (Cat# RC218042) using MegaTran 2.0 (Cat# [TT210002]).