

Product datasheet for **RC218032**

TXNDC5 (NM_030810) Human Tagged ORF Clone

Product data:

Product Type:	Expression Plasmids
Product Name:	TXNDC5 (NM_030810) Human Tagged ORF Clone
Tag:	Myc-DDK
Symbol:	TXNDC5
Synonyms:	ENDOPDI; ERP46; HCC-2; HCC2; PDIA15; STRF8; UNQ364
Mammalian Cell Selection:	Neomycin
Vector:	pCMV6-Entry (PS100001)
E. coli Selection:	Kanamycin (25 ug/mL)



[View online »](#)

ORF Nucleotide Sequence:

>RC218032 representing NM_030810
 Red=Cloning site Blue=ORF Green=Tags(s)

TTTTGTAATACGACTCACTATAGGGCGGCCGGGAATTCGTCGACTGGATCCGGTACCGAGGAGATCTGCC
 GCC**CGCATCGCC**

ATGCCCGCGCCAGGACGCCTCTCCGCTGCTGGCCCGCCGGCCCTGACTGCGCTGCTGCTGC
 TGCTGCTGGGCCATGGCGCGCCGGCGCTGGGGCGCCGGGCCAGGAGCGCCGGCGCGCGCGGA
 CGGGCCCCCGCGCAGACGCGGAGGACGGACAGGACCCGCACAGCAAGCACCTGTACACGGCCGACATG
 TTCACGCACGGGATCCAGAGCGCCGCGCACTTCGTATGTTCTTCGCGCCCTGGTGTGGACTGCCAGC
 GGCTGCAGCCGACTTGGAAATGACCTGGGAGACAAATAACAGCATGGAAGATGCCAAAGTCTATGTGGC
 TAAAGTGGACTGCACGGCCACTCCGACGTGTCTCCGCCAGGGGTGCGAGGATACCCACCTTAAAG
 CTTTTCAAGCCAGGCCAAGAAGCTGTGAAGTACCAGGGTCTCGGACTTCCAGACTGGAAAAGTGA
 TGCTGCAGACTGAACGAGGAGCCAGTACACCAGAGCCGGAAGTGAACCGCCAGTCCCCCGAGCT
 CAAGCAAGGGCTGTATGAGCTCTCAGCAAGCAACTTTGAGCTGCACGTTGCACAAGCGACCACTTTATC
 AAGTTCTTCGCTCCGTGGTGTGGTCACTGCAAAGCCCTGGCTCCAACCTGGGAGCAGTGGCTCTGGCC
 TTGAACATTCCGAAACTGTCAAGATTGGCAAGTTGATTGTACACAGCACTATGAACTCTGCTCCGAAA
 CCAGGTTCTGGCTATCCACTTCTCTGTTCCGAGATGGGAAAAAGGTGGATCAGTACAAGGAAAAG
 CGGGATTTGGAGTCACTGAGGGAGTACGTGGAGTCGCAGCTGCAGCGCACAGAGACTGGAGCGACGGAGA
 CCGTCACGCCCTCAGAGGCCCGGTGCTGGCAGCTGAGCCGAGGCTGACAAGGGCACTGTGTTGGCACT
 CACTGAAAATAACTTCGATGACACCATTGCAGAAGGAATAACCTTCATCAAGTTTATGCTCCATGGTGT
 GGTCAATGTAAGACTCTGGCTCTACTTTGGGAGAACTCTCTAAAAGGAATTCCTGGTCTGGCGGGGG
 TCAAGATCGCCGAAGTAGACTGCACTGCTGAACGGAATATCTGCAGCAAGTATTCGGTACGAGGCTACCC
 CACGTTATTGCTTTCCGAGGAGGAAGAAAGTCACTGAGCACAGTGGAGGCAGAGACCTTGACTCGTTA
 CACCGCTTTGCTGAGCCAAGCGAAAGACGAATT

ACGCGTACGCGGCCGCTCGAGCAGAACTCATCTCAGAAGAGGATCTGGCAGCAAATGATATCCTGGATT
 ACAAGGATGACGACGATAAGGTTTAA

Protein Sequence:

>RC218032 representing NM_030810
 Red=Cloning site Green=Tags(s)

MPARPGRLLPLLARPAALTALLLLLGHGGGRWGARAQEAAAAAADGPPAADGEDGQDPHSHLYTADM
 FTHGIQSAAHFVMFFAPWCGHCQRLQPTWDLGDKYNSMEDAKVYVAKVDCTAHSQVCSAQVRYPTLK
 LFKPGQEAVKYQGPDPDFQTLNWMQLTLNEEPVTPPEVEPPSAPELKQGLYELASNFELHVAQGDHFI
 KFFAPWCGHCKALAPTWEQLALGLEHSETVKIGKVDCTQHYELCSGNQVRGYPTLLWFRDGGKVDQYKGG
 RDLESLREYVESQLQRTETGATETVTPSEAPVLAPEADKGTVLALTENNFDITIAEGITFIKFYAPWC
 GHCKTLAPTWEELSKKEFPGLAGVKIAEVDCTAERNICSKYSVRGYPTLLLFRGGKVVSEHSGRDLDSL
 HRFVLSQAKDEL

TRTRPLEQKLISEEDLAANDILDYKDDDDKV

Restriction Sites:

SgfI-MluI

Cloning Scheme:

Cloning sites used for ORF Shutting:



* The last codon before the Stop codon of the ORF

ACCN: NM_030810

ORF Size: 1296 bp

OTI Disclaimer: The molecular sequence of this clone aligns with the gene accession number as a point of reference only. However, individual transcript sequences of the same gene can differ through naturally occurring variations (e.g. polymorphisms), each with its own valid existence. This clone is substantially in agreement with the reference, but a complete review of all prevailing variants is recommended prior to use. [More info](#)

OTI Annotation: This clone was engineered to express the complete ORF with an expression tag. Expression varies depending on the nature of the gene.

Components: The ORF clone is ion-exchange column purified and shipped in a 2D barcoded Matrix tube containing 10ug of transfection-ready, dried plasmid DNA (reconstitute with 100 ul of water).

Reconstitution Method:

1. Centrifuge at 5,000xg for 5min.
2. Carefully open the tube and add 100ul of sterile water to dissolve the DNA.
3. Close the tube and incubate for 10 minutes at room temperature.
4. Briefly vortex the tube and then do a quick spin (less than 5000xg) to concentrate the liquid at the bottom.
5. Store the suspended plasmid at -20°C. The DNA is stable for at least one year from date of shipping when stored at -20°C.

RefSeq: [NM_030810.5](#)
RefSeq Size: 2970 bp

RefSeq ORF: 1299 bp

Locus ID: 81567

UniProt ID: [Q8NBS9](#)
Cytogenetics: 6p24.3

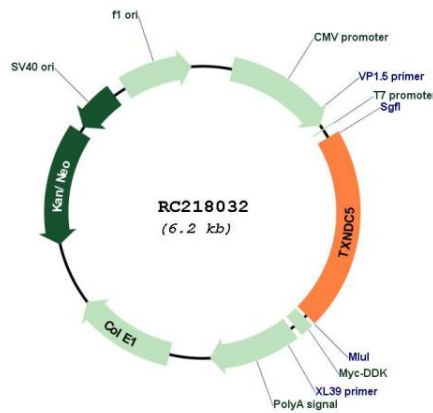
Domains: thiored

Protein Families: Druggable Genome

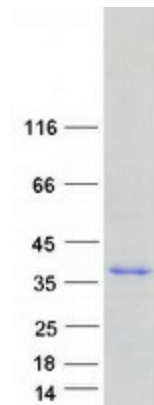
MW: 44.4 kDa

Gene Summary: This gene encodes a member of the disulfide isomerase (PDI) family of endoplasmic reticulum (ER) proteins that catalyze protein folding and thiol-disulfide interchange reactions. The encoded protein has an N-terminal endoplasmic reticulum (ER)-signal sequence, three catalytically active thioredoxin domains and a C-terminal ER-retention sequence. Its expression is induced by hypoxia and its role may be to protect hypoxic cells from apoptosis. Alternative splicing results in multiple transcript variants. Read-through transcription also exists between this gene and the neighboring upstream BLOC1S5 gene. [provided by RefSeq, Dec 2016]

Product images:



Circular map for RC218032



Coomassie blue staining of purified TXNDC5 protein (Cat# [TP318032]). The protein was produced from HEK293T cells transfected with TXNDC5 cDNA clone (Cat# RC218032) using MegaTran 2.0 (Cat# [TT210002]).