

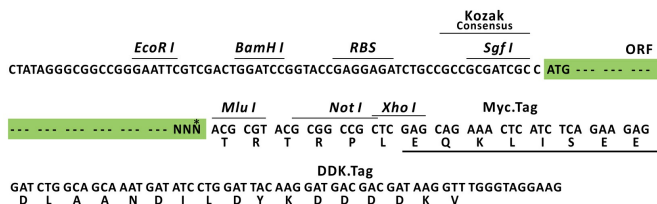
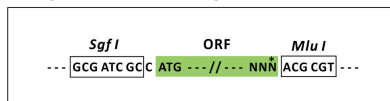
Product datasheet for RC218029L3

XRCC4 (NM_022550) Human Tagged Lenti ORF Clone

Product data:

Product Type:	Expression Plasmids
Product Name:	XRCC4 (NM_022550) Human Tagged Lenti ORF Clone
Tag:	Myc-DDK
Symbol:	XRCC4
Synonyms:	SSMED
Mammalian Cell Selection:	Puromycin
Vector:	pLenti-C-Myc-DDK-P2A-Puro (PS100092)
E. coli Selection:	Chloramphenicol (34 ug/mL)
ORF Nucleotide Sequence:	The ORF insert of this clone is exactly the same as(RC218029).
Restriction Sites:	SgfI-MluI
Cloning Scheme:	

Cloning sites used for ORF Shuttling:



* The last codon before the Stop codon of the ORF.

ACCN:	NM_022550
ORF Size:	1008 bp



[View online »](#)

OTI Disclaimer:	The molecular sequence of this clone aligns with the gene accession number as a point of reference only. However, individual transcript sequences of the same gene can differ through naturally occurring variations (e.g. polymorphisms), each with its own valid existence. This clone is substantially in agreement with the reference, but a complete review of all prevailing variants is recommended prior to use. More info
OTI Annotation:	This clone was engineered to express the complete ORF with an expression tag. Expression varies depending on the nature of the gene.
Components:	The ORF clone is ion-exchange column purified and shipped in a 2D barcoded Matrix tube containing 10ug of transfection-ready, dried plasmid DNA (reconstitute with 100 ul of water).
Reconstitution Method:	<ol style="list-style-type: none">1. Centrifuge at 5,000xg for 5min.2. Carefully open the tube and add 100ul of sterile water to dissolve the DNA.3. Close the tube and incubate for 10 minutes at room temperature.4. Briefly vortex the tube and then do a quick spin (less than 5000xg) to concentrate the liquid at the bottom.5. Store the suspended plasmid at -20°C. The DNA is stable for at least one year from date of shipping when stored at -20°C.
RefSeq:	NM_022550.1
RefSeq Size:	1707 bp
RefSeq ORF:	1005 bp
Locus ID:	7518
UniProt ID:	Q13426
Cytogenetics:	5q14.2
Protein Families:	Druggable Genome
Protein Pathways:	Non-homologous end-joining
MW:	37.9 kDa
Gene Summary:	The protein encoded by this gene functions together with DNA ligase IV and the DNA-dependent protein kinase in the repair of DNA double-strand breaks. This protein plays a role in both non-homologous end joining and the completion of V(D)J recombination. Mutations in this gene can cause short stature, microcephaly, and endocrine dysfunction (SSMED). Alternate transcript variants such as NM_022406 are unlikely to be expressed in some individuals due to a polymorphism (rs1805377) in the last splice acceptor site. [provided by RefSeq, Oct 2019]