

Product datasheet for **RC218015**

Ankyrin repeat domain containing protein 33 (ANKRD33) (NM_182608) Human Tagged ORF Clone

Product data:

Product Type:	Expression Plasmids
Product Name:	Ankyrin repeat domain containing protein 33 (ANKRD33) (NM_182608) Human Tagged ORF Clone
Tag:	Myc-DDK
Symbol:	Ankyrin repeat domain containing protein 33
Synonyms:	C12orf7; PANKY
Mammalian Cell Selection:	Neomycin
Vector:	pCMV6-Entry (PS100001)
E. coli Selection:	Kanamycin (25 ug/mL)



[View online »](#)

**ORF Nucleotide
Sequence:**

>RC218015 representing NM_182608
Red=Cloning site Blue=ORF Green=Tags(s)

TTTTGTAATACGACTCACTATAGGGCGGCCGGAATTCGTCGACTGGATCCGGTACCGAGGAGATCTGCC
GCC**GCGATCGCC**

ATGAAAGTCCAGCCATCTGTTACCTGCGTTGCTTCTGGGGAGGGATAGTCCACCTGGAGGCATTCCGGAG
ACCCAGTGATTGTGCTCCGCGGAGCCTGGGCTGTGCCCGCGTTGACTGCCTCATAGATACCCTACGAAC
CCCAAATGCCAGCTGCATGAGAAAAGGGACTCACCTTCTGGTTCCCTGCCTGGAAGAGGAAGAGCTGGCA
TTGCACAGGAGACGGCTGGACATGTCTGAGGCACTGCCCTGCCCGGGCAAGGAGACCCCCACCCAGGCT
GCAGGCTGGGGCCCTGTATTGGCCCTGTGTCCACAATGATCCCACCCAGCTCCAAGCCATACTGGATGG
TGGGGTCTCCCCAGAGGAGGCCACCCAGGTGGACAGCAATGGGAGGACAGGCCTCATGGTCGCATGCTAC
CACGGCTCCAGAGTGTGTGGCCCTGCTCAGCCACTGTCCTTTCCTTGATGTGAACCAGCAGGACAAAAG
GAGGGGACACGGCCCTCATGTTGGCTGCCAAGCAGGCCACGTGCCTCTAGTGAGTCTCCTGCTCAACTA
CTATGTGGCCCTGGACCTGGAACGCCGGGACCAGCGGGGCTCACGGCGTTAATGAAGGCTGCCATCGCG
AACCGCTGTGCTGACCTGACAGCAGTGGACCCTGTTCCGGGCAAGACGGCCCTGGAATGGCAGTGTGA
CCGACAGCTTCGACACCGTGTGGAGGATTCGGCAGCTGCTGAGGCGGCCCAAGTGGAGCAGCTTAGCCA
GCACTACAAGCCCGAGTGGCCGGCCTTGTCCGGGCTCGTGGCCAGGCCAGGCCAGGCCAGGTTGCC
CCTTCACTCCTAGAACGGCTGCAGGCTACCTTGAGCCCTCCCTTTGCCCGTCTCCTCAGGAGGGGGTG
TTCTGGACCACCTTGTGACTGCCACAACCAGCCTGGCCAGTCCCTTCGTCACTGCTGCCACACTCT
GTGCCCTGACCATCCACCTTCGCTGGGCACCCGAAGCAAGTCCGTGCCAGAGCTGTTAGGTAAGTCCCGG
CCCCCTCCCTGGTTCCTCAGTCCCGCCAGGGAGTCCCAGAGGTCCCCTGGGCTTCGTCCCCTACC
AGAGCCCTCAGGGCATATTGAGCAAGTGCCTTCAGTGGCTACAACCCAGGGATAGCACCAGGCCAGGCC
CCAAGTCCCAAGATCCTCCTCTCCAAGGCATCCTCATCCTCCACCCAGTCCAGCCGAAGCCAGTCTCT
TCAGGACACCAAAGTCTGGCCCTTCTCTCTGCGGATACCAGGAGCTCAGGATAGAGAAGAGGAAACAGG
AGGAGGAGGCCAGAATGGCACAGAAG

ACGCGTACGCGGCCGCTCGAGCAGAACTCATCTCAGAAGAGGATCTGGCAGCAAATGATATCCTGGATT
ACAAGGATGACGACGATAAGGTTTAA

Protein Sequence:

>RC218015 representing NM_182608
Red=Cloning site Green=Tags(s)

MKVQPSVTCVASWGGIVHLEAFGDPVIVLRGAWAVPRVDCLIDTLRTPNASCMRKGTHLLVPCLEEEELA
LHRRRLDMSEALPCPGKETPTPGCRLGALYWACVHNDPTQLQAILDGGVSPPEATQVDSNGRTGLMVACY
HGFQSVVALLSHCPFLDYNQDQKGGDTALMLAAQAGHVPLVSLLLNYYVGLDLERRDQRGLTALMKAAMR
NRCADLTAVDPVRGKTALEWAVLTDSDTVWIRQLRRPQVEQLSQHYKPEWPALSGLVAQAQAQVA
PSLLERLQATLSLFPAPSPQEGGVLVDHLVTATSLASPFVTTACHTLCPDHPPSLGTRSKSVPELLGTAP
PPPLVPQSPGSPQRSPWVFPYQSPQILSKCLQWLQPRDSTSPRPQVPKILLKASSSSHQCPKPS
SGHQLALPLWRYQELRIEKRKQEEEARMAQK

TRTRPLEQKLISEEDLAANDILDYKDDDDKV

Chromatograms:

https://cdn.origene.com/chromatograms/mk8015_g10.zip

Restriction Sites:

Sgfl-Mlul

Cloning Scheme:



ACCN: NM_182608

ORF Size: 1356 bp

OTI Disclaimer: The molecular sequence of this clone aligns with the gene accession number as a point of reference only. However, individual transcript sequences of the same gene can differ through naturally occurring variations (e.g. polymorphisms), each with its own valid existence. This clone is substantially in agreement with the reference, but a complete review of all prevailing variants is recommended prior to use. [More info](#)

OTI Annotation: This clone was engineered to express the complete ORF with an expression tag. Expression varies depending on the nature of the gene.

Components: The ORF clone is ion-exchange column purified and shipped in a 2D barcoded Matrix tube containing 10ug of transfection-ready, dried plasmid DNA (reconstitute with 100 ul of water).

Reconstitution Method:

1. Centrifuge at 5,000xg for 5min.
2. Carefully open the tube and add 100ul of sterile water to dissolve the DNA.
3. Close the tube and incubate for 10 minutes at room temperature.
4. Briefly vortex the tube and then do a quick spin (less than 5000xg) to concentrate the liquid at the bottom.
5. Store the suspended plasmid at -20°C. The DNA is stable for at least one year from date of shipping when stored at -20°C.

RefSeq: [NM_182608.4](#)

RefSeq Size: 1935 bp

RefSeq ORF: 1359 bp

Locus ID: 341405

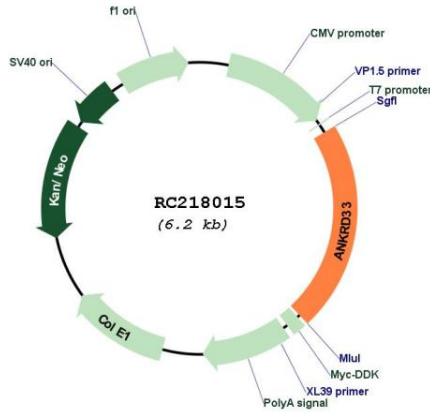
UniProt ID: [Q7Z3H0](#)

Cytogenetics: 12q13.13

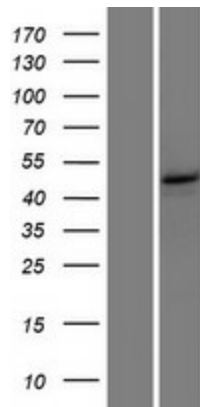
MW: 49.2 kDa

Gene Summary: Acts as a transcriptional repressor for CRX-activated photoreceptor gene regulation. [UniProtKB/Swiss-Prot Function]

Product images:



Circular map for RC218015



Western blot validation of overexpression lysate (Cat# [LY405454]) using anti-DDK antibody (Cat# [TA50011-100]). Left: Cell lysates from untransfected HEK293T cells; Right: Cell lysates from HEK293T cells transfected with RC218015 using transfection reagent MegaTran 2.0 (Cat# [TT210002]).