

Product datasheet for **RC218013**

JRK (NM_001077527) Human Tagged ORF Clone

Product data:

Product Type:	Expression Plasmids
Product Name:	JRK (NM_001077527) Human Tagged ORF Clone
Tag:	Myc-DDK
Symbol:	JRK
Synonyms:	jerky; JH8
Mammalian Cell Selection:	Neomycin
Vector:	pCMV6-Entry (PS100001)
E. coli Selection:	Kanamycin (25 ug/mL)



[View online »](#)

ORF Nucleotide Sequence:

>RC218013 representing NM_001077527
 Red=Cloning site Blue=ORF Green=Tags(s)

TTTTGTAATACGACTCACTATAGGGCGGCCGGAATTCGTCGACTGGATCCGGTACCGAGGAGATCTGCC
 GCC**CGGATCGCC**

ATGGCCTCCAAGCCGGCTGCCGGAAGAGCAGAGGGGAGAAGCGGAAGAGGGTGGTGTGACTGAAGG
 AGAAGATTGACATCTGCACGCGCCTGGAGAAGGGCGAGAGCCGGAAGGCACTGATGCAGGAGTACAATGT
 GGGCATGTCCACCCTCTACGACATCAGGGCCACAAGGCGCAGCTGCTCCGGTTCTTCGCCAGCTCGGAC
 TCCAACAAGGCGCTGGAGCAGCGGCGCACGCTGCACACGCCAAGCTGGAGCACCTGGACCGCGTCTGT
 ACGAGTGGTTCTGGGAAGCGCTCCGAGGGCGTCCCCGTGTCAGGCCCATGCTCATCGAGAAGGCCAA
 GGACTTCTACGAGCAGATGCAGCTCACTGAGCCCTGCGTGTCTCCGAGGGTGGCTTTGGCGCTTAAAG
 GCCAGACACGGCATTAAAAAGCTAGATGCATCCAGTAAAAGCAGTCAGCCGACCACCAGGCCGCGGAGC
 AGTTCTGTGCGTTTTTCAGGAGCTTGGCTGCTGAGCACGGGCTGCCGCCGAGCAGGTTTACAACGCTGA
 TGAGACCGGCCTTTCTGGCGGTGCTGCCAAATCCCCTCCGGAAGGCGGGGCTGTGCCTGGCCCAAG
 CAGGGCAAGGACCGGCTGACCGTGTGTGTGCCAACGCCACGGGCTCCACAGGCTCAAGCCCTTGG
 CCATCGGGAAGTGCAGCGGTCCCAGGGCTTCAAAGGCATCCAGCACCTGCCCGTCGCTATAAGGCCCA
 GGGGAATGCCTGGGTGGACAAGGAGATTTTTCCGATTGGTTCATCATATCTTTGTGCCCTCGGTGAGA
 GAGCACTTCAGAACCATAGGTTTCCCGGAAGACAGCAAAGCCGTTCTCTTGTGACAGCTCCCGGGCTC
 ACCCGCAGGAGGCGAGCTGGTGTCCAGTAACGTTTTCCACATCTTCTGCTGCCAGCTGGCCTCATT
 GGTGCAGCCATGGAGCAGGGCATTCCGAGAGATTTTATGAGGAACCTTCAATACCCTCCGGTCCCCTG
 CAGGGCCCCATGCCGCTACAACATGAACGATGCCATATCAGCGTGGCCTGTGCCTGGAACGCACTCC
 CTAGCCACGCTTTCAGGCGGGCCTGGAGGAAGCTGTGGCCGTGCTTGGCTTTGCCGAAGGCTCCTCCTC
 TGAGGAGGAGTTGGAGGCAGAGTCTCCAGTGAAGCCCCACAACAAGTCTTTGCACACATCCTGGAG
 CTTGTGAAGGAAGGCTCCTCCTGCCCGGCCAGCTTCGCCAGCGCCAGGCGCCAGCTGGGGGTAGCGG
 GAAGGGAGGCAGAAGGGGACGGCCCCCTGCTGCCACGTCGCCAGCAGAGGTTGTGTGGAGTTAGAAAA
 GACTCCAAAAGCTGACCAGGACGGCGGAGGAGATCCTGGTGGAGGCGAGGAGGTGGCCTGGGAGCAGGCG
 GCCGTGGCCTTTGACGAGTCTGCGCTTTGCCGAGCGGCAGCCATGCTTCAGTGCAGGAAAGTGGGGC
 AGCTGCGGGCGCTGCGTGCCTGTTCCGGAGCCAGCAGGAGACTGTGGGCCTGAGGATGTGGTAGT
 GACCTACCAGAGGAGTTGGCAATCCTAAGTGTGCTGCTGGAGGCTCTACAGAGACA

ACGCGTACGCGGCCGCTCGAGCAGAAACTCATCTCAGAAGAGGATCTGGCAGCAAATGATATCCTGGATT
 ACAAGGATGACGACGATAAGGTTTAA

Protein Sequence:

>RC218013 representing NM_001077527
 Red=Cloning site Green=Tags(s)

MASKPAAGKSRGEKRRVVLTLKEKIDICTRLEKGESRKALMQEYNVGMSTLYDIRAHKAQLLRFASSD
 SNKALEQRRTLHTPKLEHLDRVL YEWFLGKRSEGVVPSGPMLIEKAKDFYEQMLTEPCVFSGGWLWRFK
 ARHGIKKLDASSEKQSADHQAAEQCAFFRSLAAEHLSAEQVYNADETLFWRCLPNPTPEGGAVPGPK
 QGKDRLTVLMCANATGSHRLKPLAIGKCSGPRAFKGIQHLPVAYKAQGNWVDKEIFSDWFHHIFVPSVR
 EHFRTIGLPEDSKAVLLLDSSRAHPQEAELVSSNVFTIFLPASVASLVQPMEQGIRRD FMRNFINPPVPL
 QGPHARYNMND AIFSVACAWNAVPSHVFRRAWRKLWPSVAF AEGSSSEEELEAECPVKPHNKSFAHILE
 LVKEGSSCPQLRQRQAASWGVAGREAEGRPPAATSPA E VVWSSEKTPKADQDGGGDPGEGEEVAWEQA
 AVAFDAVLRFAERQPCFSAQEVGQLRALRAVFRSQQETVGLLEDVVVTSPEELAI PKCCLEASTET

TRTRPLEQKLI SEEDLAANDILDYKDDDDKV

Chromatograms:

https://cdn.origene.com/chromatograms/mk8016_b09.zip

Restriction Sites:

SgfI-MluI

Cloning Scheme:

ACCN: NM_001077527

ORF Size: 1668 bp

OTI Disclaimer: The molecular sequence of this clone aligns with the gene accession number as a point of reference only. However, individual transcript sequences of the same gene can differ through naturally occurring variations (e.g. polymorphisms), each with its own valid existence. This clone is substantially in agreement with the reference, but a complete review of all prevailing variants is recommended prior to use. [More info](#)

OTI Annotation: This clone was engineered to express the complete ORF with an expression tag. Expression varies depending on the nature of the gene.

Components: The ORF clone is ion-exchange column purified and shipped in a 2D barcoded Matrix tube containing 10ug of transfection-ready, dried plasmid DNA (reconstitute with 100 ul of water).

- Reconstitution Method:**
1. Centrifuge at 5,000xg for 5min.
 2. Carefully open the tube and add 100ul of sterile water to dissolve the DNA.
 3. Close the tube and incubate for 10 minutes at room temperature.
 4. Briefly vortex the tube and then do a quick spin (less than 5000xg) to concentrate the liquid at the bottom.
 5. Store the suspended plasmid at -20°C. The DNA is stable for at least one year from date of shipping when stored at -20°C.

RefSeq: [NM_001077527.1](#), [NP_001070995.1](#)
RefSeq Size: 3578 bp

RefSeq ORF: 1671 bp

Locus ID: 8629

UniProt ID: [O75564](#)

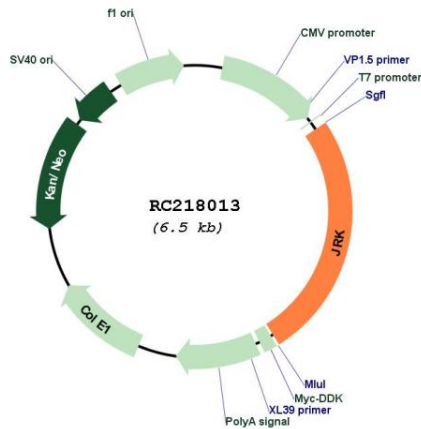
Cytogenetics: 8q24.3

Protein Families: Transcription Factors

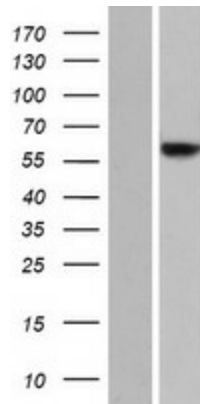
MW: 61.5 kDa

Gene Summary: This gene encodes a conserved protein that is similar to DNA-binding proteins, such as major centromere autoantigen B (CENPB). Inactivation of the related gene in mice resulted in epileptic seizures. Childhood Absence Epilepsy (CAE) has been mapped to the same chromosomal location (8q24.3) as this gene. Alternative splicing results in multiple transcript variants. [provided by RefSeq, Jul 2013]

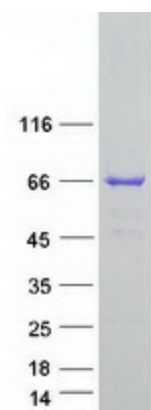
Product images:



Circular map for RC218013



Western blot validation of overexpression lysate (Cat# [LY421459]) using anti-DDK antibody (Cat# [TA50011-100]). Left: Cell lysates from untransfected HEK293T cells; Right: Cell lysates from HEK293T cells transfected with RC218013 using transfection reagent MegaTran 2.0 (Cat# [TT210002]).



Coomassie blue staining of purified JRK protein (Cat# [TP318013]). The protein was produced from HEK293T cells transfected with JRK cDNA clone (Cat# RC218013) using MegaTran 2.0 (Cat# [TT210002]).