

Product datasheet for **RC218011**

5 HT1A (HTR1A) (NM_000524) Human Tagged ORF Clone

Product data:

Product Type:	Expression Plasmids
Product Name:	5 HT1A (HTR1A) (NM_000524) Human Tagged ORF Clone
Tag:	Myc-DDK
Symbol:	5 HT1A
Synonyms:	5-HT-1A; 5-HT1A; 5HT1a; ADRB2RL1; ADRBRL1; G-21; PFMCD
Mammalian Cell Selection:	Neomycin
Vector:	pCMV6-Entry (PS100001)
E. coli Selection:	Kanamycin (25 ug/mL)



[View online »](#)

ORF Nucleotide Sequence:

>RC218011 representing NM_000524
 Red=Cloning site Blue=ORF Green=Tags(s)

TTTTGTAATACGACTCACTATAGGGCGGCCGGAATTCGTCGACTGGATCCGGTACCGAGGAGATCTGCC
 GCC**CGATCGCC**

ATGGATGTGCTCAGCCCTGGTCAGGGCAACAACACCACATCACACCACGGCTCCCTTTGAGACCGGGCGCA
 AACTACTGGTATCTCCGACGTGACCGTCAGCTACCAAGTGATCACCTCTCTGCTGCTGGGCACGCTCAT
 CTTCTGCGCGGTGCTGGCAATGCGTGCGTGGTGGCTGCCATCGCCTTGAGAGCGCTCCCTGCAGAACGTG
 GCCAATTATCTTATTGGCTCTTTGGCGGTACCGACCTCATGGTGTGCGTGTGGTGTGCCCATGGCCG
 CGCTGTATCAGGTGCTCAACAAGTGGACTGGGCCAGTAACCTGCGACCTGTTTCATCGCCCTCGACGT
 GCTGTGCTGCACCTCATCCATCTTGACCTGTGCGCCATCGCGCTGGACAGGACTGGGCCATCACGGAC
 CCCATCGACTACGTGAACAAGAGGACGCCCCGGCGCGCCGCTGCGCTCATCTCGCTCACTGGCTTATTG
 GCTTCTCATCTCTATCCCGCCATGCTGGGCTGGCGACCCCGAAGACCGCTCGGACCCCGACGCATG
 CACCATTAGCAAGGATCATGGCTACACTATCTATTCCACCTTTGGAGCTTCTACATCCCGCTGCTGCTC
 ATGCTGGTTCTCTATGGGCGCATATTCCGAGCTGCGCGCTTCCGATCCGCAAGACGGTCAAAAAGGTGG
 AGAAGACCGGAGCGGACACCCGCCATGGAGCATCTCCCGCCCGACCCAAAGAAGAGTGTGAATGGAGA
 GTCGGGGAGCAGGAAGTGGAGGCTGGGCGTGGAGAGCAAGGCTGGGGGTGCTCTGTGCGCCAATGGCGCG
 GTGAGGCAAGGTGACGATGGCGCCGCCCTGGAGGTGATCGAGGTGCACCGAGTGGGCAACTCCAAAGAGC
 ACTTGCCTCTGCCAGCGAGGCTGGTCTACCCCTTGTGCCCCGCTCTTTGAGAGGAAAAATGAGCG
 CAACGCCGAGGCGAAGCGCAAGTGGCCCTGGCCCGAGAGAGGAAGACAGTGAAGACGCTGGGCATCATC
 ATGGGCACCTTCATCCTCTGCTGGCTGCCCTTCTTCATCGTGGCTTGTGCTGCCCTTCTGCGAGAGCA
 GCTGCCACATGCCACCCTGTTGGGCGCCATAATCAATTGGCTGGGCTACTCCAACCTCTGCTTAACCC
 CGTCAATACGCATACTCAACAAGGACTTTCAAACGCGTTTAAAGAAGATCATTAAAGTGAAGTTCTGCG
 CGCCAG

AG**CGGACCG**ACGCGTACGCGGCCGCTCGAGCAGAACTCATCTCAGAAGAGGATCTGGCAGCAAATGATATCC
 TGGATTACAAGGATGACGACGATAAGGTTAA

Protein Sequence:

>RC218011 representing NM_000524
 Red=Cloning site Green=Tags(s)

MDVLSPGQGNNTSPPAPFETGGNTTGISDVTVSQVITSLLLGTLIFCAVLGNACVVAAIALERSLQNV
 ANYLIGSLAVTDLMSVSLVLPMAALYQVLNKWTLGQVTCDLFIALDLVLCCTSSILHLCAIALDRYWAITD
 PIDYVNRTPRRAAALISLTLWIGFLISIPPMLGWRTPEDRSDPACTISKDHGYTIYSTFGAFYIPLLL
 MLVLYGRIFRAARFIRKTVKKVEKTGADTRHGASAPQPKKSVNGESGSRNWRLGVESKAGGALCANGA
 VRQDDGAALVIEVHRVGNKEHLPLPSEAGTPCAPASFERKNERNAEAKRKMALARERKTVKTLGII
 MGTFILCWL PFFIVALVLPFCESSCHMPTLLGAIINWLGYSNLLNPVIYAYFNKDFQNAFKKIICKKFC
 RQ

SGPTRTRRLEQKLI SEEDLAANDILDYKDDDDKV

Chromatograms:

https://cdn.origene.com/chromatograms/mk6621_f09.zip

Restriction Sites:

Sgfl-RsrII

Cloning Scheme:


ACCN: NM_000524

ORF Size: 1266 bp

OTI Disclaimer: The molecular sequence of this clone aligns with the gene accession number as a point of reference only. However, individual transcript sequences of the same gene can differ through naturally occurring variations (e.g. polymorphisms), each with its own valid existence. This clone is substantially in agreement with the reference, but a complete review of all prevailing variants is recommended prior to use. [More info](#)

OTI Annotation: This clone was engineered to express the complete ORF with an expression tag. Expression varies depending on the nature of the gene.

Components: The ORF clone is ion-exchange column purified and shipped in a 2D barcoded Matrix tube containing 10ug of transfection-ready, dried plasmid DNA (reconstitute with 100 ul of water).

Reconstitution Method:

1. Centrifuge at 5,000xg for 5min.
2. Carefully open the tube and add 100ul of sterile water to dissolve the DNA.
3. Close the tube and incubate for 10 minutes at room temperature.
4. Briefly vortex the tube and then do a quick spin (less than 5000xg) to concentrate the liquid at the bottom.
5. Store the suspended plasmid at -20°C. The DNA is stable for at least one year from date of shipping when stored at -20°C.

Note: Plasmids are not sterile. For experiments where strict sterility is required, filtration with 0.22um filter is required.

RefSeq: [NM_000524.4](#)

RefSeq Size: 1269 bp

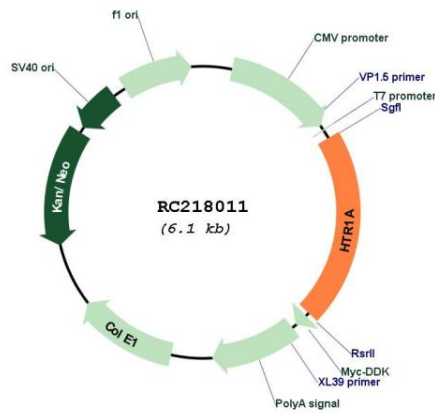
RefSeq ORF: 1269 bp

Locus ID: 3350

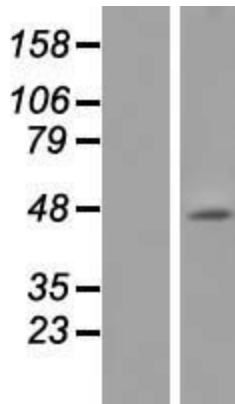
UniProt ID: [P08908](#)
Cytogenetics: 5q12.3
Domains: 7tm_1
Protein Families: Druggable Genome, GPCR, Transmembrane
Protein Pathways: Neuroactive ligand-receptor interaction
MW: 45.9 kDa

Gene Summary: This gene encodes a G protein-coupled receptor for 5-hydroxytryptamine (serotonin), and belongs to the 5-hydroxytryptamine receptor subfamily. Serotonin has been implicated in a number of physiologic processes and pathologic conditions. Inactivation of this gene in mice results in behavior consistent with an increased anxiety and stress response. Mutation in the promoter of this gene has been associated with menstrual cycle-dependent periodic fevers. [provided by RefSeq, Jun 2012]

Product images:



Circular map for RC218011



Western blot validation of overexpression lysate (Cat# [LY424665]) using anti-DDK antibody (Cat# [TA50011-100]). Left: Cell lysates from untransfected HEK293T cells; Right: Cell lysates from HEK293T cells transfected with RC218011 using transfection reagent MegaTran 2.0 (Cat# [TT210002]).