

## Product datasheet for **RC218010**

### **RAPGEF5 (NM\_012294) Human Tagged ORF Clone**

#### **Product data:**

Product Type:	Expression Plasmids
Product Name:	RAPGEF5 (NM_012294) Human Tagged ORF Clone
Tag:	Myc-DDK
Symbol:	RAPGEF5
Synonyms:	GFR; MR-GEF; REPAC
Mammalian Cell Selection:	Neomycin
Vector:	pCMV6-Entry (PS100001)
E. coli Selection:	Kanamycin (25 ug/mL)



[View online »](#)

**ORF Nucleotide Sequence:**

>RC218010 representing NM\_012294  
 Red=Cloning site Blue=ORF Green=Tags(s)

TTTTGTAATACGACTCACTATAGGGCGGCCGGGAATTCGTCGACTGGATCCGGTACCGAGGAGATCTGCC  
 GCC**CGCATCGCC**

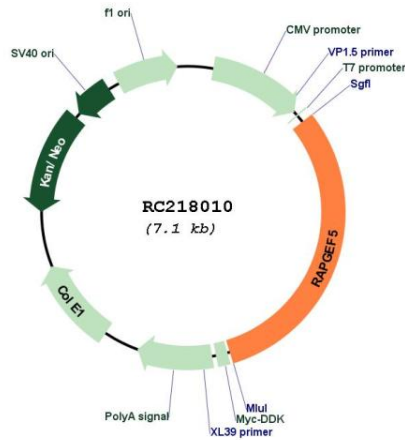
ATGGCCATAGGAGTCTGGCAACTCTACTGGACATGGAATTATGTTATCAGTGGACCAGCATCTATACT  
 TTCAAGATACTTATGTTTTCTACCACTTTTCTCTGATGAATGTAGCTACTTGTACTGTGAATTTGAAAG  
 AGAAGAAGAATGGCAAAATGGTGTCAAGCTTTTACTGCAACTTGTGCCTCTCATTCTGCCAGAGGTGGC  
 ATCTGTGAACTGTCTCATCAGAAAATTGAAGACTCCGAAGAAAGCAGTGATGAAATTTCTGTGCGTCTAA  
 CATCTGCGGTGCAGAGAGAGCTAGCAGCTGTTATTGCTTTGAAAGCAAGGAAGTCTGCAATTGAACAAGA  
 TGAAGAAAACAACGACAAACATGTAGCTGTAAACAGAAGCCGAAAGTGTCCAGATTCTCAGGCAGGGGTG  
 ATGTGCAAGCTCCAGGAAAGAGATGAAATCGGACGAATTGAACTAGTCCAGAAGCTGGCAAAGAAAAC  
 ATCAGTTTTTGCAGACGGACAAAAAAGAACAGGAGAAGTCTGAACACCAAGATGATGAAGTGACGACTGT  
 TCAGGTTAAAGAGCAAGACCAGAGCGTCTGGTGTGAAGAAAGTGCAGTGTGTGGCCAGCCCCACA  
 GCTGGGAGTGGGAGAGCCATTGGAGATATGTGGTGGTGTCCGGGACCCGGAGAAGATTTTGGAGCACC  
 TTTTGAATGACTTGCACCTGGAAGAAGTCCAGGACAAAGAAAACAGAGACCCTCTGGATGACTTCCTTCT  
 CACGTACACTGTCTTATGACAACTGATGACTTGTGCCAGGCTCTGTTAAGGCATATTCTGCTAAGAAG  
 TATCAAGGCAAAGAGGAAAACCTCAGACGTTCCGCGTAGGAAACGTAAGTCTTGCATCTTGTTCACAGT  
 GGATTGCTCTGTACAAAGACTGGTTACCTGAAGATGAACATTCAAAAATGTTTTTAAAGACCATATATAG  
 GAATGTACTGGATGATGTTTATGAATATCCAATACTTGAAAAAGAATTGAAAGAATTTCAAAGATACTT  
 GGAATGCACCGTCGTCACTGTAGATGAATATCACCACAAAAAAGAATAAAGCCCTTTTCCACCAAT  
 TCAGTCTTAAGGAGAAGTGGCTCCAGCATAGAGGAAGTGTGACTGAAACGGAGGAAATTTTCTGCCAGT  
 GTATATAACAGAGCACTCCTATGTCAGTGTGAAGGCAAAAGTTTCCAGTATAGCCCAAGAGATCCTAAAA  
 GTCGTGGCAGAAAAGATCCAGTATGCAGAAGAGGATCTGGCTCTGGTGGCCATCACATTCTCTGGGAAA  
 AGCATGAACTTACGCCAAATGACTTAGTCATCTCCAAATCCCTCGAGGCATCTGGTGAATATATGTCTA  
 CCGGAAAGACCTGGCGGACACTTGAACCCATTTGCAGAAAATGAGGAATCACAGCAAAGGTCGATGAGG  
 ATTTTGGGAATGAACACTTGGGATCTTGTCTGGAATTAATGAATTTTGGTGGAGTCTATTCAATTCAA  
 TTCACGAGCAAGAGCTGATCTACTTACGTTTCCAGACAGGGAAGTGGGAAACACACTGCAAAATCTCAG  
 CCTTCTGCTCCAGAGATGCAATGAGTCCAGCTTTGGGTGGCCACGGAGATTCTGCTCTGCAGCCAGCTG  
 GGCAAGCGAGTGCAGCTGGTAAAAAATTCATCAAAATTCGGGCTCACTGCAAAGCCAGAGAAACCTGA  
 ATCTTTCTTTGCCATTGTGATGGGTCTCAACACTGCTTCTGTCAGTCTGACTGTCCGAGACTGGGAGAA  
 AATCCCTGGGAAGTTTAAAGAACTTTTCTGAACTTGAAGTTTAAACAGATCCTTCCCTAAATCACAAA  
 GCCTACAGAGATGCATTCAAAAAGATGAAGCCACCAAAAATCCCTTTCATGCCCTTATTGCTTAAAGATG  
 TAACATTTATTCTGAAGGAAAATAAACTTTTTGGATAATCTTGTCAATTTTGAAGAGTGCATATGAT  
 CGCAGACACTGTCCGAACCCTGAGACACTGCAGGACTAACCAGTTTGGTACCTGTCTCCAAAAGAGCAT  
 CAAGAGTTAAAGTCTATGTTAATCACCTGTATGTCATTGACAGCCAGCAGGCTCTGTTTGGACTCTCAC  
 ACAGGATCGAGCCTCGGGTG

**ACGCGT**ACGCGGCCGCTCGAGCAGAACTCATCTCAGAAGAGGATCTGGCAGCAAATGATATCCTGGATT  
 ACAAGGATGACGACGATAAGGTTTAA

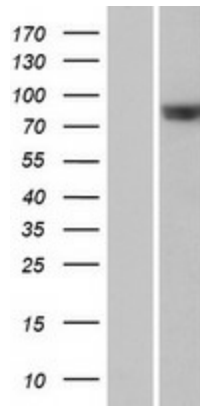


<b>Components:</b>	The ORF clone is ion-exchange column purified and shipped in a 2D barcoded Matrix tube containing 10ug of transfection-ready, dried plasmid DNA (reconstitute with 100 ul of water).
<b>Reconstitution Method:</b>	<ol style="list-style-type: none"><li>1. Centrifuge at 5,000xg for 5min.</li><li>2. Carefully open the tube and add 100ul of sterile water to dissolve the DNA.</li><li>3. Close the tube and incubate for 10 minutes at room temperature.</li><li>4. Briefly vortex the tube and then do a quick spin (less than 5000xg) to concentrate the liquid at the bottom.</li><li>5. Store the suspended plasmid at -20°C. The DNA is stable for at least one year from date of shipping when stored at -20°C.</li></ol>
<b>Note:</b>	Plasmids are not sterile. For experiments where strict sterility is required, filtration with 0.22um filter is required.
<b>RefSeq:</b>	<u><a href="#">NM_012294.3</a></u> , <u><a href="#">NP_036426.3</a></u>
<b>RefSeq Size:</b>	6629 bp
<b>RefSeq ORF:</b>	2652 bp
<b>Locus ID:</b>	9771
<b>UniProt ID:</b>	<u><a href="#">Q92565</a></u>
<b>Cytogenetics:</b>	7p15.3
<b>MW:</b>	84.5 kDa
<b>Gene Summary:</b>	Members of the RAS (see HRAS; MIM 190020) subfamily of GTPases function in signal transduction as GTP/GDP-regulated switches that cycle between inactive GDP- and active GTP-bound states. Guanine nucleotide exchange factors (GEFs), such as RAPGEF5, serve as RAS activators by promoting acquisition of GTP to maintain the active GTP-bound state and are the key link between cell surface receptors and RAS activation (Rebhun et al., 2000 [PubMed 10934204]).[supplied by OMIM, Mar 2008]

Product images:



Circular map for RC218010



Western blot validation of overexpression lysate (Cat# [LY415857]) using anti-DDK antibody (Cat# [TA50011-100]). Left: Cell lysates from untransfected HEK293T cells; Right: Cell lysates from HEK293T cells transfected with RC218010 using transfection reagent MegaTran 2.0 (Cat# [TT210002]).