

Product datasheet for **RC217990**

SCFD1 (NM_016106) Human Tagged ORF Clone

Product data:

Product Type:	Expression Plasmids
Product Name:	SCFD1 (NM_016106) Human Tagged ORF Clone
Tag:	Myc-DDK
Symbol:	SCFD1
Synonyms:	C14orf163; RA410; SLY1; SLY1P; STXBP1L2
Mammalian Cell Selection:	Neomycin
Vector:	pCMV6-Entry (PS100001)
E. coli Selection:	Kanamycin (25 ug/mL)



[View online »](#)

ORF Nucleotide
Sequence:

>RC217990 representing NM_016106
Red=Cloning site Blue=ORF Green=Tags(s)

TTTTGTAATACGACTCACTATAGGGCGGCCGGGAATTCGTCGACTGGATCCGGTACCGAGGAGATCTGCC
GCC**CGCATCGCC**

ATGGCGGGCGGCCGCGCAGCGACAGCAGCAGCAGCCAGTATTCGGGAAAGGCAGACAGTGGCTTTGA
AGCGTATGTTGAATTTCAATGTGCCTCATATTAACACAGCACAGGAGAACCAGTATGGAAGGTACTCAT
TTATGACAGATTTGGCCAAGATATAATCTCCTCTGCTATCTGTGAAGGAGCTAAGAGACATGGGAATC
ACTCTGCATCTGCTTTTACACTCTGATCGAGATCCTATCCAGATGTTCTCAGTATACTTTGTAATGC
CAACTGAAGAAAAATTGACAGAATGTCCAGGATCTTCGAAATCAACTATGAATCATATTATTTAAA
TTTTATTTCTGCTATTTCAAGAAGTAACTGGAAGATATTGCAATGCAGCGTTAGCAGCTAGTGCAGTA
ACACAAGTAGCCAAGGTTTTGACCAATATCTCAATTTTATTACTTTGGAAGATGATATGTTGTATTAT
GTAATCAAATAAGGAGCTTGTTCATATCGTGCCATTAACAGGCCAGATATCACAGACCGGAAATGGA
AACTGTTATGGACTATAGTTGACAGCCTCTTCTGCTTTTTTGTACTCTGGGTGCTGTTCTATAATC
AGATGTTCAAGAGGAACAGCAGCAGAAATGGTAGCAGTAACTAGACAAGAACTTCGAGAAAACTAA
GAGATGCAAGAAACAGTCTTTTTACAGGTGATACACTGGAGCTGGCCAATTCAGCTCCAGAGGCCCTT
ATTAGTCTTGTGACAGAAACATAGATTTGGCAACTCCTTACATCACTTGGACATATCAAGCATTG
GTGCACGATGACTGGATTTCCATTTAAACAGGGTTAATTTGGAAGAATCTTCAGGAGTGGAAAACCTC
CAGCTGGTGTAGACCAAGAGAAAAACAAGAAGTCTTATGATTTAACTCCGGTTGATAAATTTGGCA
AAAACATAAAGGAAGTCCATCCCAGAAGTGCAGAATCAGTTCAGCAAGAACTAGAATCTTACAGAGCA
CAGGAAGATGAGGTCAAACGACTTAAAAGCATTATGGGACTAGAAGGGGAAGATGAAGGAGCCATAAGTA
TGCTTTCTGACAATACCGCTAAGCTAACATCAGCTGTTAGTTCTTTGCCAGAATCCTTGAGAAAAAAG
ACTTATTGATCTCCATACAAATGTTGCCACTGCTGTTTTAGAACATATAAAGGCAAGAAAATTGGATGTA
TATTTTGAATATGAAGAAAAAATAATGAGCAAACTACTCTGGATAAATCTCTTCTAGATATAATATCAG
ACCCTGATGCAGGAACTCCAGAAGATAAAATGAGGTTGTTTCTTATCTATTATATAAGCACACAGCAAGC
ACCTTCTGAGGCTGATTTGGAGCAATATAAAAAAGCTTAACTGATGCAGGATGCAACCTTAATCCTTTA
CAATATATCAAACAGTGGAAAGGCTTTTACCAAGATGGCCTCAGCTCCGGCCAGCTATGGCAGCACTACCA
CTAAACCAATGGGTCTTTTATCACGAGTCATGAATACAGGATCACAGTTTGTGATGGAAGGAGTGAAGAA
CCTGGTTTTGAAACAGCAAAATCTACCTGTTACTCGTATTTTGGACAATCTTATGGAGATGAAGTCAAAC
CCCGAACTGATGACTATAGATATTTGATCCCAAATGCTGCGGGCAATGACAGCTCAGTTCCAGAA
ATAAAAATCCATTCCAAGAGGCCATTGTTTTGTGGTGGGAGGAGGCAACTACATTGAATATCAGAACT
TGTTGACTACATAAAGGGGAAACAAGGCAACACATTTTATATGGCTGCAGTGAGCTTTTAAATGCTACA
CAGTTCATAAAACAGTTGTCACAACCTGGACAAAAG

ACGCGTACGCGGCCGCTCGAGCAGAACTCATCTCAGAAGAGGATCTGGCAGCAATGATATCCTGGATT
ACAAGGATGACGACGATAAGGTTTAA

Protein Sequence: >RC217990 representing NM_016106
 Red=Cloning site Green=Tags(s)

MAAAAAATAAAAIRERQTVALKRMLNFNVPHIKNSTGEPVWKVLIYDRFGQDIISPLLSVKELRDMGI
 TLHLLLHSDRDPIDVPAVYFVMPTEENIDRMCQDLRNQLYESYLNFI SAISRKLEDIANAALAASAV
 TQVAKVFDQYLNFI TLEDDMFVLCNQNKELVSYRAINRPDITDTEMETVMDTIVDSLFCFFVTLGAVPII
 RCSRGTAEMVAVKLDKLLRENLRDARNSLFTGDTLGAGQFSFQRPLLVLVDRNIDLATPLHHTWTYQAL
 VHDVLD FHLNRVNLEESSGVENSPAGARPKRKNKSYDLTPVDKFWQKHGSPFPEVAESVQQUELESYRA
 QEDEVKRLKSI MGLEGEDEGAISMLSDNTAKLTS AVSSLP ELLKRLIDLHTNVATAVLEHIKARKLDV
 YFEYEEKIMSKTTLDKSLLDIISDPDAGTPEDKMRLFLIYYISTQQAPSEADLEQYKKALTDAGCNLNPL
 QYIKQWKAFTKMASAPASYGSTTTKPMGLLSRVMTGSQFVMEGVKNLVLKQQLPVTRILDNLMEMKSN
 PETDDYRYFDPKMLRGNDSSVPRNKNPFQEAIVFVVGGGNYIEYQNLVDYIKGKQGHILYGCSELFNAT
 QFIKQLSQLGQK

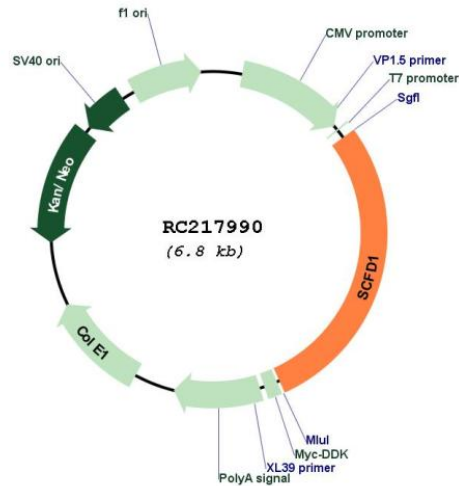
TRTRPLEQKLISEEDLAANDILDYKDDDDKV

Chromatograms: https://cdn.origene.com/chromatograms/mk6282_g09.zip

Restriction Sites: SgfI-MluI

Cloning Scheme:



Plasmid Map:


ACCN: NM_016106

ORF Size: 1926 bp

OTI Disclaimer: The molecular sequence of this clone aligns with the gene accession number as a point of reference only. However, individual transcript sequences of the same gene can differ through naturally occurring variations (e.g. polymorphisms), each with its own valid existence. This clone is substantially in agreement with the reference, but a complete review of all prevailing variants is recommended prior to use. [More info](#)

OTI Annotation: This clone was engineered to express the complete ORF with an expression tag. Expression varies depending on the nature of the gene.

Components: The ORF clone is ion-exchange column purified and shipped in a 2D barcoded Matrix tube containing 10ug of transfection-ready, dried plasmid DNA (reconstitute with 100 ul of water).

Reconstitution Method:

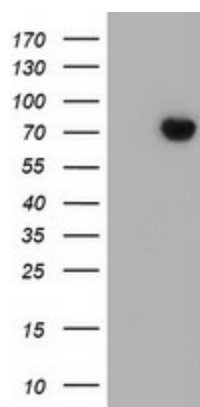
1. Centrifuge at 5,000xg for 5min.
2. Carefully open the tube and add 100ul of sterile water to dissolve the DNA.
3. Close the tube and incubate for 10 minutes at room temperature.
4. Briefly vortex the tube and then do a quick spin (less than 5000xg) to concentrate the liquid at the bottom.
5. Store the suspended plasmid at -20°C. The DNA is stable for at least one year from date of shipping when stored at -20°C.

RefSeq: [NM_016106.4](#)

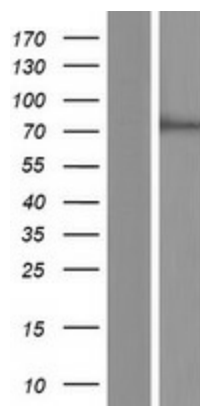
RefSeq Size: 2172 bp

RefSeq ORF:	1929 bp
Locus ID:	23256
UniProt ID:	Q8WVM8
Cytogenetics:	14q12
Domains:	Sec1
MW:	72.2 kDa
Gene Summary:	Plays a role in SNARE-pin assembly and Golgi-to-ER retrograde transport via its interaction with COG4. Involved in vesicular transport between the endoplasmic reticulum and the Golgi (By similarity).[UniProtKB/Swiss-Prot Function]

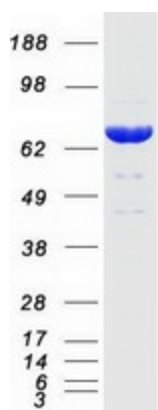
Product images:



HEK293T cells were transfected with the pCMV6-ENTRY control (Cat# [PS100001], Left lane) or pCMV6-ENTRY SCFD1 (Cat# RC217990, Right lane) cDNA for 48 hrs and lysed. Equivalent amounts of cell lysates (5 ug per lane) were separated by SDS-PAGE and immunoblotted with anti-SCFD1 (Cat# [TA504721]). Positive lysates [LY414181] (100ug) and [LC414181] (20ug) can be purchased separately from OriGene.



Western blot validation of overexpression lysate (Cat# [LY414181]) using anti-DDK antibody (Cat# [TA50011-100]). Left: Cell lysates from untransfected HEK293T cells; Right: Cell lysates from HEK293T cells transfected with RC217990 using transfection reagent MegaTran 2.0 (Cat# [TT210002]).



Coomassie blue staining of purified SCFD1 protein (Cat# [TP317990]). The protein was produced from HEK293T cells transfected with SCFD1 cDNA clone (Cat# RC217990) using MegaTran 2.0 (Cat# [TT210002]).