

Product datasheet for **RC217982**

RIZ1 (PRDM2) (NM_015866) Human Tagged ORF Clone

Product data:

Product Type: Expression Plasmids
Product Name: RIZ1 (PRDM2) (NM_015866) Human Tagged ORF Clone
Tag: Myc-DDK
Symbol: PRDM2
Synonyms: HUMHOXY1; KMT8; KMT8A; MTB-ZF; RIZ; RIZ1; RIZ2
Vector: pCMV6-Entry (PS100001)
E. coli Selection: Kanamycin (25 ug/mL)
Cell Selection: Neomycin
ORF Nucleotide Sequence: >RC217982 representing NM_015866
Red=Cloning site Blue=ORF Green=Tags(s)

TTTTGTAATACGACTCACTATAGGGCGCCGGAATTCGTCGACTGGATCCGGTACCGAGGAGATCTGCC
GCC**CGGATCGCC**

ATGAATCAGAACACTACTGAGCCTGTGGCGCCACCGAGACCCTGGCTGAGGTACCCGAACATGTGCTGC
GAGGACTTCCGGAGGAAGTGAGGCTTTCCCTTCTGCTGTTGACAAGACCCGGATTGGTGTCTGGCCAC
TAAACCAATTTAAAAGGCAAAAAATTTGGCCATTTGTTGGTGATAAGAAAAAAGATCTCAGGTTAAG
AATAATGTATACATGTGGGAGGTGATTACCCAAATTTGGGATGGATGTGCATTGATGCCACTGATCCAG
AGAAGGAAAAGTGGCTGCGATATGTGAATTTGGCTTGGCTCAGGAGAAGAGCAAAATTTATCCCACTGGA
AATCAACAGAGCCATTTACTATAAACTTTAAAGCCAATCGCGCCGGGCGAGGAGCTCCTGGTCTGGTAC
AATGGGGAAGACAACCCTGAGATAGCAGCTGCGATTGAGGAAGAGCGAGCCAGCGCCCGGAGCAAGCGGA
GCTCCCCAAGAGCCGAAAGGGAAGAAAAATCCCAGGAAAATAAAACAAAGGAAACAAAATCCAAGA
CATACAACTGAAGACAAGTGAGCCAGATTTACCTCTGCAAAATGAGAGATTCTGCAGAAGGTCTCTAAA
GAAGACGAAGAGAAGCCTTCAGCCTCAGCACTTGAGCAGCCGGCCACCCTCCAGGAGGTGCCAGTCAGG
AGGTGCCCTCCAGAAGTCAACCCCTGCCCTGCCTGGGAGCCACAGCCAGAACCAAGCAGGCGATTAGA
AGCGGCAGCTTGTGAGGTGAATGATTTGGGGGAAGAGGAGGAGGAGGAAGAGGAGGATGAAGAAGAA
GAAGAAGATGATGATGATGATGATGATTGGAAGACGAGGGGGAAGAAGAAGCCAGCATGCCAAATGAAAAT
CTGTGAAAGAGCCAGAAATACGGTGTGATGAGAAGCCAGAAGATTTATTAGAGGAACAAAAACAATTC
AGAAGAACTCTTGAAGACTGCTCAGAGGTAACACCTGCCATGCAAAATCCCAGAACTAAAGAAGAGGCC
AATGGTGTGATTTTGAACGTTTATGTTTCCGTGTCAACATTGTGAAAGGAAGTTTACAACCAACAGG
GGCTTGAGCGTCACATGCATATCCATATATCCACCGTCAATCATGCTTTCAAATGCAAGTACTGTGGAA
AGCCTTTGGCACACAGATTAACCGCGGCGACATGAGCGGCCATGAAGCAGGGTTAAAGCGGAAACCC
AGCCAAACACTACAGCCGTCAGAGGATCTGGCTGATGGCAAAGCATCTGGAGAAAACGTTGCTTCAAAG
ATGATTCGAGTCTCCAGTCTTGGGCCAGACTGTCTGATCATGAATTCAGAGAAGGCTTCCAAGACAC
AATAAATCTTCTGTCGTAAGAAGAAATGGGGAAGTTAAAGAAGTTCATCCGTGCAAAATATTGTA AAAAG
GTTTTTGGAACTCATACTAATATGAGACGGCATCAGCGTAGAGTTCACGAACGTCATCTGATTTCCAAAG



GTGTACGGCGAAAAGGAGGCCTTGAAGAGCCCCAGCCTCCAGCAGAACAGGCCCCAGGCCACCCAGAACGT
 GTATGTACCAAGCACAGAGCCGAGGAGGAAGGGGAAGCAGATGATGTGTACATCATGGACATTTCTAGC
 AATATCTCTGAAAACCTAAATTAATTAATTTGATGGTAAAATTCAAACTAATAACAACACTAGTAACGTGT
 ATGTGATTGAGATGGAGTCTGCTTCGGCAGATTTGATGGTATAAATTGTCTGCTCACTCCAGTTACAGT
 GGAATTACTCAAATAAAGACCACACAGGTCCTGTAAACAGAAGATCTTCTAAAGAGCCTTTGGGC
 AGCACAATAAGTAGGCCAAGAAGCGGAGAAGCTGCGAGCCACCTGCAGTGCCTAAATTAAGGCCGAAA
 CAGACTCGACCCATGGTCCCCTCTTCTCTTAAAGTCTTCTCTTAGCATATCAACAACAGAGGCAGT
 GTCTTTCCACAAAAGAGAAAAGTGTATTTGTCATCAAAGCTCAAACAACCTTCTCAAACCAAGATAAA
 CTAACCTCTGCAGGGATTTAGCAACTGAAATAGCTAAATTAGGTCTGTTTGTGTGTCTGCTCCTGCAT
 CAATGTTGCCTGTGACCTCAAGTAGGTTAAGAGGCGGACCAGCTCTCCTCCCAGTTCTCCACAGCACAG
 TCCTGCCCTTCGAGACTTTGAAAGCCAAGTGATGGGAAAGCAGCATGGACCGATGCCGGCTGACTTCC
 AAAAAATCAAATTAGAAAGTACACGGACTCACCAGCATGGAGTTTGTCTGGGAGAGATGAGAGAGAAA
 CTGTGAGCCCTCCATGCTTTGATGAATATAAATGTCTAAAGAGTGGACAGCTAGTTCTGCTTTTAGCAG
 TGTGTGCAACCAGCAGCCACTGGATTTATCCAGCGGTGTCAAACAGAAGGCTGAGGGTACAGGCAAGACT
 CCAGTCCAGTGGGAATCTGTCTTAGATCTCAGTGTGCATAAAAGCATTGTAGTGACTCTGAAGGCAAGG
 AATTCAAAGAAAAGTCATTCAAGTGCAGCCTACGTGTAGTGCTGAAAGAAAAGGAAAACCAACCTGCAT
 GCTGCAGAAGGTTCTTCTCAATGAATATAATGGCATCGATTTACCTGTAGAAAACCTGCAGATGGGACC
 AGGAGCCCAAGTCTTGTAAATCCCTAGAAAGTCAAGCAGATCCTGACCTCGGTCCGGGCTCTGGTTTC
 CTGCCCTACTGTTGAGTCCACACCTGATGTTTGTCTTATCACCTGCCCTGCAGACACCTCCCTTTC
 ATCCGGTCAGTGCCTCCTCTCTTATCCCCACAGATCCTCTTCCCCTCCACCTGTCCCCGGTATTA
 ACTGTTGCCACTCCGCCCCCTCCCCTCCTTCTACCGTACCTCTTCCAGCCCCCTTCCAGTGCATCTC
 CACACCCATGCCCTCTCCACTCTCAAATGCCACCGCACAGTCCCCTTCCAATTCTGTCCCAACAGT
 GTCCCCCTCCTCCTCCCATCTCCGTGGAGCCCCGTGATGTCTGCCGCTCACCCGGCCCTCCAACA
 CTTTCTTCTCCTCCTCTTCTCCTCCTCCTCCTTCTGTTTTCTTCTTCTCCTCCTCCTCCTCCTCCT
 CTCACCTCCTCCTCCGCAATATCATCTGTTGTTTCTCTGGTGATAATCTGGAGGCTTCTCCTCCAT
 GATATCTTTCAAACAGGAGGAATTAGAGAATGAAGGTCTGAAACCCAGGGAAGAGCCCAGTCTGTGCT
 GAACAGGATGTT
 TTTCCATTAAAGATCTAACCAACATTTATCTATTCATGCTGAAGAATGGCCCTCAAATGTGAATTTG
 TGTGCAGTTTTTAAGGATAAAACGGACTTGTGAGAATCGCTTTTTGCTTTCATGGAGTGGGAATATC
 TTTGTGTGTTCTGTTTGTAAAAAGAATTTGCTTTTTTGTGCAATTTGCAGCAGCACCAGCGAGATCTCC
 ACCCAGATAAGGTGTGCACACATCAGAGTTTGAAGCGGGACTCTGAGGCCCCAGAAGTTTACAGATCC
 CAGCAAGGCCATGTAGAGCATATGCAGAGCTTGCAGAAAGATCCTTTAGAAACTTCTAAAGAAGAAGAG
 GAGTTAAATGATTCTCTGAAGAGCTTTACACGACTATAAAAAATATGGCTTCTGGAATAAAGACAAAAAG
 ATCCAGATGTTTCGATTGGGCCTCAATCAGCATTACCCAAGCTTTAAACCACCTCCATTTCAAGTACCATCA
 CCGTAACCCCATGGGGATTGGTGTGACAGCCACAAATTTCACTACACACAATATTCACAGACTTTCACT
 ACCGCCATTGCTGCACAAAAGTGTGAAAAGGTGTGACAATATGCCGGAGTTGCACAAACATATCTG
 CTTGTGCTTCTGCAAGTGACAAGAAGAGGTACACGCCTAAGAAAAACCCAGTACCATTAAAAAACTGT
 GCAACCCAAAAATGGCGTGGTGGTTTTAGATAACTCTGGGAAAAATGCCTCCGACGAATGGGACAGCCC
 AAAAGGCTTAACCTTAGTGTGAGCTCAGCAAAATGTCGTCGAATAAGCTCAAATTAATGCATTGAAGA
 AAAAAATCAGCTAGTACAGAAAAGCAATTTCTCAGAAAAACAAATCTGCAAAAGCAGAAGGCCGACTTGAA
 AAATGCTTGTGAGTCATCTCTCACATCTGCCCTTACTGTAATCGAGAGTTCACTTACATTGGAAGCCTG
 AATAAACACGCCGCTTCAAGTGTCCAAAAAACCCCTTCTCCTCCAAAAAAAAGTTTCTCATTTCAT
 CTAAGAAAGGTGGACTCATCACCTGCAAGTAGTGACAAAAACAGTAACAGCAACCACCGCAGACGGAC
 AGCGGATGCGGAGATTAATGCAAAGCATGCAGACTCCGTTGGGCAAGACCAGAGCCCGCAGCTCAGGC
 CCCACCCAAGTCCACTTCCCTCCTCATCTTCAAGTCCAAGCAGAACGTCAAGTTTGCAGCTTCGGTGA
 AATCCAAAAACCAAGCTCCTCCTTTAAGGAACTCCAGCCGATAAGAATGGCCAAAAAATCAATCATGT
 TGAGGGGAAAAAACCCTAAAGCTGTGGCCAAGAATCATTCTGCTCAGCTTTCCAGCAAAACATCACGGAGC
 CTGCACGTGAGGGTACAGAAAAGCAAAGCTGTTTTACAAAGCAAATCCACCTTGGCGAGTAAGAAAAGAA
 CAGACCGTTCAATATAAAATCTAGAGAGCGGAGTGGGGGGCCAGTACCCCGGAGCCTTCAAGTGGCAGC
 TGCTGTGACTTGAGTGAGAACAAAGAGAGAGGACGGCAGCGCCAAGCAGGAGCTGAAGGACTTCAGGAAC
 TTCCTG

ACGCGTACGCGGCCGCTCGAGCAGAACTCATCTCAGAAGAGGATCTGGCAGCAAATGATATCCTGGATT
ACAAGGATGACGACGATAAGGTTTAA

Protein Sequence:

>RC217982 representing NM_015866
Red=Cloning site Green=Tags(s)

MNQNTTEPVAATETLAEVPEHVLRLPEEVRLFPSAVDKTRIGVWATKPIILKGKKFGPFVGDKKKRSQVK
NNVYMWEVYYPNLGWMCIDATDPEKGNWLRVYNWACSGEEQNLFPLEINRAIYYKTLKPIAPGEE LLVWY
NGEDNPEIAAAIEEERASARSKRSSPKSRKGKKKSQENKNKGNKIQDIQLKTSEPDFTSANMRDSAEGPK
EDEEKPSASALEQPATLQEVASQEVPELATPAPAWEPQPEPDERLEAAACEVNDLGE EEEEEEEEEDEEE
EEDDDDELEDEGEEEA S MPNENS VK EPEIRCDEKPEDLLEEPKTTSEETLEDCSEVTPAMQIPRTKEEA
NGDVFETFMFPCQH CERKFTTKQGLERHMHIIHISTVNHAFKCKYCGKAFGTQINRRRHERRHEAGLRKRP
SQTLPQSEDLADGKASGENVASKDDSSPPLGPDCIMNSEKASQDTINSSVVEENGEVKELHPCKYCKK
VFGTHTNMRRHQRRVHERHLIPKGVRRKGLLEPQPPAEQAQATQNVVYVSTEPEEEGEADVVYIMDISS
NI SENLNYIDGKIQTNNNTSNCDVIEMESASADLYGINCLLTPVTVEITQNIKTTQVPVTE DL PKEPLG
STNSEAKKRRTASPPALPKIKAETDSDPMVPSCSLSPLSISTTEAVSFHKEKSVYLSK LKQLLQTQDK
LTPAGISATEIAKLG P V C S A P A S M L P V T S S R F K R R T S S P S S P Q H S P A L R D F G K P S D G K A A W T D A G L T S
K K S K L E S H S D S P A W S L S G R D E R E T V S P P C F D E Y K M S K E W T A S S A F S S V C N Q Q P L D L S S G V K Q A E G T G K T
P V Q W E S V L D L S V H K K H C S D S E G K E F K E S H S V Q P T C S A V K K R K P T T C M L Q K V L L N E Y N G I D L P V E N P A D G T
R S P S P C K S L E A Q P D P L G P G S G F P A P T V E S T P D V C P S S P A L Q T P S L S S G Q L P L L I P T D P S S P P P C P P V L
T V A T P P P P L L P T V P L P A P S S S A S P H P C P S P L S N A T A Q S P L P I L S P T V S P S P I P P V E P L M S A A S P G P P T
L S S S S S S S S S S F S S S S S S S P P P L S A I S S V V S S G D N L E A S L P M I S F K Q E E L E N E G L K P R E E P Q S A A
E Q D V V V Q E T F N K N F V C N V C E S P F L S I K D L T K H L S I H A E E W P F K C E F C V Q L F K D K T D L S E H R F L L H G V G N I
F V C S V C K K E F A F L C N L Q Q H Q R D L H P D K V C T H H E F E S G T L R P Q N F T D P S K A H V E H M Q S L P E D P L E T S K E E E
E L N D S S E E L Y T T I K I M A S G I K T K D P D V R L G L N Q H Y P S F K P P P F Q Y H R N P M G I G V T A T N F T T H N I P Q T F T
T A I R C T K C G K G V D N M P E L H K H I L A C A S A S D K K R Y T P K K N P V L K Q T V Q P K N G V V L D N S G K N A F R R M G Q P
K R L N F S V E L S K M S S N K L K L N A L K K N Q L V Q A I L Q K N S A K Q K A D L K N A C E S S H I C P Y C N R E F T Y I G S L
N K H A A F S C P K K P L S P P K K V S H S K K G G H S S P A S S D K N S N H R R R T A D A E I K M Q S M Q T P L G K T R A R S S G
P T Q V P L P S S F R S K Q N V K F A A S V K S K P S S S L R N S S P I R M A K I T H V E G K K P A V A K N H S A Q L S S K T S R S
L H V R V Q K S K A V L Q S K S T L A S K K R T D R F N I K S R E R S G G P V T R S L Q L A A A A D L S E N K R E D G S A K Q E L K D F R N
F L

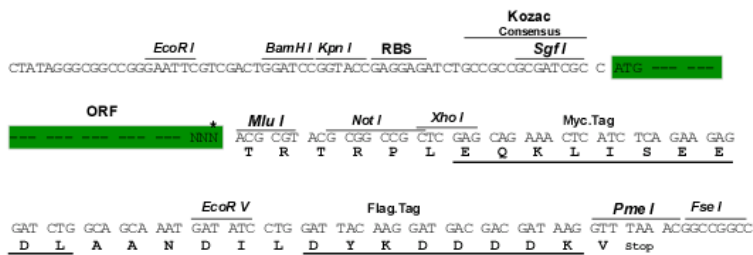
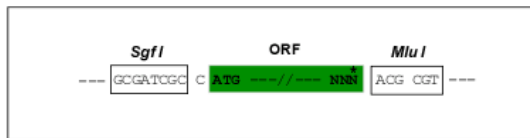
TRTRPLEQKLISEEDLAANDILDYKDDDDKV

Restriction Sites:

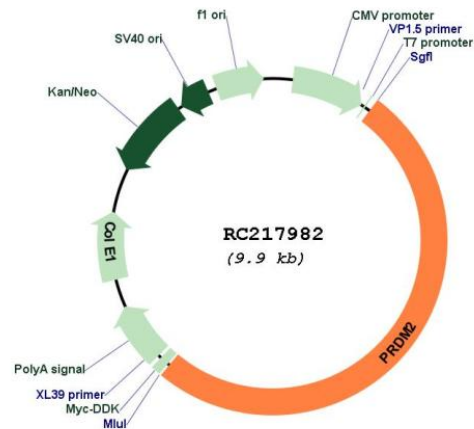
SgfI-MluI

Cloning Scheme:

Cloning sites used for ORF Shuttling:



* The last codon before the Stop codon of the ORF

Plasmid Map:


ACCN: NM_015866

ORF Size: 5046 bp

OTI Disclaimer: The molecular sequence of this clone aligns with the gene accession number as a point of reference only. However, individual transcript sequences of the same gene can differ through naturally occurring variations (e.g. polymorphisms), each with its own valid existence. This clone is substantially in agreement with the reference, but a complete review of all prevailing variants is recommended prior to use. [More info](#)

OTI Annotation: This clone was engineered to express the complete ORF with an expression tag. Expression varies depending on the nature of the gene.

Components:	The ORF clone is ion-exchange column purified and shipped in a 2D barcoded Matrix tube containing 10ug of transfection-ready, dried plasmid DNA (reconstitute with 100 ul of water).
Reconstitution Method:	<ol style="list-style-type: none">1. Centrifuge at 5,000xg for 5min.2. Carefully open the tube and add 100ul of sterile water to dissolve the DNA.3. Close the tube and incubate for 10 minutes at room temperature.4. Briefly vortex the tube and then do a quick spin (less than 5000xg) to concentrate the liquid at the bottom.5. Store the suspended plasmid at -20°C. The DNA is stable for at least one year from date of shipping when stored at -20°C.
RefSeq:	<u>NM_015866.4</u> , <u>NP_056950.2</u>
RefSeq Size:	7466 bp
RefSeq ORF:	5049 bp
Locus ID:	7799
UniProt ID:	<u>Q13029</u>
Cytogenetics:	1p36.21
Domains:	SET, zf-C2H2
Protein Families:	Druggable Genome
MW:	185 kDa
Gene Summary:	This tumor suppressor gene is a member of a nuclear histone/protein methyltransferase superfamily. It encodes a zinc finger protein that can bind to retinoblastoma protein, estrogen receptor, and the TPA-responsive element (MTE) of the heme-oxygenase-1 gene. Although the functions of this protein have not been fully characterized, it may (1) play a role in transcriptional regulation during neuronal differentiation and pathogenesis of retinoblastoma, (2) act as a transcriptional activator of the heme-oxygenase-1 gene, and (3) be a specific effector of estrogen action. Multiple transcript variants encoding different isoforms have been found for this gene. [provided by RefSeq, Oct 2008]