

Product datasheet for RC217976

ARHGEF11 (NM_014784) Human Tagged ORF Clone

Product data:

Product Type:	Expression Plasmids
Product Name:	ARHGEF11 (NM_014784) Human Tagged ORF Clone
Tag:	Myc-DDK
Symbol:	ARHGEF11
Synonyms:	GTRAP48; PDZ-RHOGEF
Vector:	pCMV6-Entry (PS100001)
E. coli Selection:	Kanamycin (25 ug/mL)
Cell Selection:	Neomycin
ORF Nucleotide Sequence:	>RC217976 representing NM_014784 Red=Cloning site Blue=ORF Green=Tags(s)

TTTTGTAATACGACTCACTATAGGGCGCCGGAATTCGTCGACTGGATCCGGTACCGAGGAGATCTGCC
GCCGCGATCGCC

ATGAGTGAAGGTTACCCAGAGTATAGACAGGTTAAGTAGCCTGTCTTCTCTGGGAGATTCTGCACCAG
AGCGCAAGTCCCCTTCCCACCATCGCCAGCCTTCGGATGCCTCTGAGACAACAGGTCTCGTTCAACGCTG
TGTCATTATCCAAAAGGACCAGCATGGCTTCGGCTTACAGTCAGTGGGGATCGCATTGTTCTGGTGCAG
TCTGTGCGGCCTGGAGGTGCAGCCATGAAGGCCGGTGTGAAAGAGGGCGACCGGATCATAAAGTCAACG
GCACCATGGTGACCAATAGCTCACACCTGGAAGTGGTAAAGCTGATCAAATCTGGCGCCTATGTCCGACT
CACCTCCTGGGCTCTTACCTTCATCCATGGGCATCTCTGGGCTCCAGCAGGACCCATCCCCAGCAGGA
GCTCCCCGAATCACGTCACTGATCCCCTCACACCACCTCCTCCACCTCTACCACCTCCACAACGCATCA
CAGGACCCAAACCTCTGCAGGATCCCAGGTTCAAAAACATGCCACCCAGATCCTCAGGAATATGCTGAG
GCAGGAAGAAAAAGAATTACAGGACATACTTCCACTATATGGTGACACCAGCCAGAGACCATCAGAAGGC
CGGCTCTCTGGATTCCCAGGAGGGGGACAGTGGCTTGGACTCTGGGACAGAACGCTTTCCTCCCTCA
GTGAGTCATTGATGAATCGAACTCGGTACTGTCAGACCCTGGGCTAGACAGTCCCTGAACCTCCCCTGT
GATCATGGCCAGGTTGGCCAGCACACAGCGCGCAGGGCTCGGATGCAGCAGTCCCTCAACCGGTGAC
CAGGGTGTAGATCAAAGCCCAAAGCCTTTAATTATTGGCCAGAGGAAGACTATGACCCGGTTATTTC
ACAACGAGAGCGACATCATATCCAGGATCTGGAGAACTGAAGTCTCGGCCAGCTCACCTGGGGTTTT
TCTACGTTACATCTTCTCTCAGGCGGACCCAGTCCACTGCTTTTTTACCTGTGTGCAGAAGTTTATCAG
CAGGCAAGCCCCAAGGATTCCCAGGCTGGGAAAGACATCTGGAATATTTTCTGGAGAAAAATGCGC
CTCTGAGAGTGAAGATCCCTGAGATGCTACAGGCTGAAATTGACTCGGCCTGCGGAACAGCGAAGATGC
CCGTGGTGTCTCTGTGAAGCTCAAGAGGCAGCCATGCCTGAGATCCAAGAGCAGATCCACGACTACAGA
ACGAAGCGCACACTGGGCTGGGCAGCCTGTATGGTGAATGACCTGCTGGACCTGGATGGGACCCCTC
TCCGAGAGCGCCAAGTGGCTGAGAAGCAGCTGGCTGCCCTTGGAGATATTTGTCCAAGTATGAGGAAGA
CAGGAGCGCCCCATGGACTTCGCCCTCAATACCTACATGAGCCATGCTGGGATCCGTCTTCGAGAGGCA
CGACCTTCCAACACAGCTGAAAAGGCCAGTCTGCTCCTGACAAGGACAAGTGGCTACCGTTCTCCCTA



[View online »](#)

AGACCAAGAAGAGCAGCAATTCCAAGAAAGAAAAGGATGCCTTGAGGACAAGAAGCGAAACCCTATCCT
CAAATACATTGGGAAGCCAAAAGCTCTTCTCAAAGCACATTTTCATATCCCTTGTCCCCTGTGGAAGTC
AAACCAGGCAATGTGAGGAACATCATTACGACTTTGAGAACAACCAGCAGTATGATGCCCCAGAACCTG
GGACACAACGACTCTCGACCCGGAAGCTTCTGAGGACCTGTGGAGAGTGACAGTTCACGCTCAGAGAT
TCGCCTGGGCCGCTCTGAAAGCCTCAAGGGCCGGGAAGAGATGAAACGGTCTCGAAAGGCAGAGAACGTG
CCCCGCTCTCGCAGTGTGTTGACATGGATGCTGCTGCGGAGGCTACTCGCCTGCACCAGTCACTCGT
CCTCTACCTCCAGCCTCTCCACCAGGTCTTTGAGAACCAACCCCTCCATTACCTCCAAAATGGGCCG
CAGGAGCATTGAGTCCCCAGTTTGGGGTTCTGCACAGATACCCTCCTTCCCACCTCCTAGAGGATGAT
CTGGGCCAGTGTCTGACCTGGAGCCAGAGCCAGATGCCAAAATTGGCAGCATACAGTGGCAAGGATG
TGGTGGCTGGGCTAACCCAGCGGGAGATTGACCGCAAGAGGTCAATGAGCTGTTTGTGACTGAAGC
TCCCACCTGCGCACACTCCGGTCTGGACCTGATCTTCTACCAGCGAATGAAGAAGGAGAACCTGATG
CCCCGGGAGGAGTGGCCGGCTTCCCGAACCTGCCTGAACTCATAGAGATTCACAATTCCTGGTGTG
AAGCCATGAAGAAGCTCCGGGAGGAAGGCCCATCATCAAGAGATCAGTGACCTCATGTGCCCGGTT
TGATGGCCCTGCCGAGAGGAACCTCAGCAAGTGGCTGCACAGTCTGTCTCTATCAGTCAATAGCCCTA
GAGCTAATCAAGACCAAGCAACGCAAGGAGAGTGCATTCCAGCTTTCATGCAGGAGGCTGAGAGCCACC
CTCAGTGTCCGGCCTGCAGCTGAGAGACCTCATCATCTGAGATGCAGCGGCTACCAAGTACCCGCT
GCTGCTGGAGAGCATCATCAAGCACACAGAGGGTGGCACCTCTGAGCATGAGAAGCTGTGCCGGGCCGG
GACCAGTGCCGGGAGATTCTCAAGTATGTGAATGAAGCGGTAACAAACAGAGAACCAGCCACCGTTTGA
AGGGTACCAGAAACGCCTGGATGCCACCAGCCCTGGAGAGGGCCAGCAACCCCTGGCAGCAGAGTTCAA
GAGCCTGGATCTTACAACCAGAAAAATGATCCATGAGGGACCCCTGACCTGGAGGATCAGCAAGGATAAG
ACCTTGGACCTCCACGTGCTGCTGCTGGAGGACCTCCTAGTGTGCTACAGAAACAGGATGAGAAGCTAT
TGCTGAAGTGCCACAGCAAGACTGCTGTGGCTCCTCAGACAGCAAGCAGACCTCAGCCCGTGTCTCAA
GCTCAATGTGTCTCATCCGCTCTGTGGCCACAGATAAACGGGCTTTCATCATCTGCACCTCCAAG
CTGGGCCACCCAGATCTATGAGCTGGTTGCATTGACGTCATCAGACAAGAACACATGGATGGAGCTCT
TAGAAGAGGCCGTGCGGAATGCCACCAGGCACCCCGGAGCTGCCCAATGCCCGTCCATCTCCACCCCC
AGGTCCCCGGGAGCCAGCCAGCAGGGCCACACCCAGCAGGGTGAAGTGGATGACTCAGACGTGTTT
CATGGTGAACCTGAACCTGAGGAGCTGCCTGGAGGCACTGGTCCCAGCAGAGGGTCCAAGGGAAGCACC
AGGTCTGCTAGAGGACCTGAGCAGGAGGGCAGTGCAGAGGAAGAGGAAGTGGTGTCTGCTTGGCC
TTCCACATCCCTGGATGGAGAGAACAGGGGCATCAGGACAAGGAACCCCATCCACTTGGCCTTCCCAGGC
CCTCTGTTTATGGAAGGGCTCGTACTCCGCTCTGGAAGATGTGGAGAACCTGCGACATCTGATCTGT
GGAGCCTGCTGCCAGGTACACCATGGAAGTCAAGGCTGCCAGGAGCCGAGGACGACCTGACACCCAC
ACCTTCTGTCATCAGCGTCACTCTCACCCCTGGGACCCAGGCTCCCCAGGGCAAGCACCCCTGGGGT
GAAGGGGACAACCCAGCTTGCAGGGCTGGAGGGGGAACGGCCAGAGCAGGAAGACATGGGTCTCTGTT
CTCTGGAACACCTACCCCAAGGACCAGAAATTCTGGGATATGGGAGTCTCCAGAAGTGGACAGGAATCT
GGCTGAAGATGCTTCAAGCACAGAGGCAGCAGGAGGTTACAAAGTTGTGAGAAAAGCTGAGGTGGCAGGC
AGCAAGGTTGTCCTGCACTACCAGAGAGTGGCCAGTCAAGGCTGGGCCACCTGAAGTGGAAAGGCGGAA
CAAAGGCTACGGGGAACCTGCTTTTATGTCAGCATGCCATCAGGACCCCGGACTCAAGCACCCGACTC
AGAGGCACCCATGAGCCCCCTCAGCCTGACAGCCTCCCTGCAGGGCAGACAGAGCCTCAGCCTCAGCTG
CAGGGAGGCAACGATGATCCAAGACGCCCCAGCCGCTCTCCTCCAAGCCTGGCCCTCAGGGACGTGGGCA
TGATCTTCCATACCATTGAGCAGCTCACTCTAAGCTCAACAGGCTCAAGGATATGGAGCTGGCCACAG
AGAGCTGCTCAAGTCCCTTGGGGGAGAGTCACTGGTGGCACCACGCTGTGGGAGTTTCCACACAGAA
GCAGCTAGATGGACAGATGGCTCCCTCTCACCTCCCGTAAGGAGCCCTAGCTTCTGACTCCAGGAACA
GCCATGAACTGGGGCCCTGCCCTGAGGATGGCTCTGACGCCCCCTGGAAGACAGCACAGCAGCAGCAGC
CGCTCACCAGGACCA

ACGCGTACGCGGCCGCTCGAGCAGAAACTCATCTCAGAAGAGGATCTGGCAGCAATGATATCCTGGATT
ACAAGGATGACGACGATAAGGTTTAA

Protein Sequence: >RC217976 representing NM_014784
 Red=Cloning site Green=Tags(s)

```
MSVRLPQSIDRLSSLSSLDGDSAPERKSPSHHRQPSDASETTGLVQRCVIIQKDQHGFGFTVSGDRIVLVQ
SVRPGGAAMKAGVKEGDRIIKVNGTMVNTSSHLEVVKLIKSGAYVALTLLGSSPSSMGISGLQQDPSPAG
APRITSVIPSPPPPPPLPPPQRITGPKPLQDPEVQKHATQILRNMLRQEEKELQDILPLYGDTSQRPSEG
RLSLDSQEGDGLDVGTERFPSLSESLMNRNSVLSDPGLDSPRTSPVIMARVAQHRRRQGSDAAVPSTGD
QGVDPQSPKPLIIGPEEDYDPGYFNNESDIIFQDLEKLSRPAHLGVFLRYIFSQADPSPLLFYLCAEVYQ
QASPKDSRSLGKDIWNIFLEKNAPLRVKIPEMLQAEIDSRLRNSDARGVLCQAQAAMPEIQEQIHDYR
TKRTLGLGSLYGENDLLDLGDPLRERQVAEKQLAALGDILSKYEEDRSAPMDFALNTYMSHAGIRLREA
RPSNTAEKAQSAPDKDKWLPFFPKTKSSNSKKEKDALEDKKNRPILKYIGPKSSSQSTFHIPLSPVEV
KPGNVRNIQHFENNQQYDAPEPGTQRLSTGSFPEDLLESDDRSEIRLGRSESLKGREEMKRSKAENV
PRSRSDVMDAAAATRHLHQSASSTSSLSTRLENPTPPFTPKMGRRSIESPSLGFCTDILLPHLEDD
LGQLSDLEPEPDAQNWQHTVKGDVVAGLTQREIDRQEVINELFVTEASHLRTLRLVLDLIFYQRMKKENLM
PREELARLFPNLPFLIEIHNWCEAMKKLREEGPIIKEISDLMLARFDGPAREELQQVAAQFCSYQSIAL
ELIKTKQRKESRFQLFMQEAESHQCRRLQLRDLIISEMQLTKYPLLLLESIIKHTEGGTSEHEKLCRAR
DQCREILKYVNEAVKQTENRHRLEGYQKRLDATALERASNPLAAEFKSLDLTTRKMIHEGPLTWRIKDK
TLDLHVLLLEDLLVLLQKQDEKLLKCHSKTAVGSSDSKQTFSPVLKNAVLIIRSVATDKRAFFIICTSK
LGPPQIYELVALTSSDKNTWEMLEEAARNATRHGAAMPVHPPPPGPREPAQQGPTPSRVELDDSDVF
HGEPEPEELPGGTGSQQRVQKQVLEDPQEGSAEEEEELGVLPCPSTSLDGENRGIRTRNPIHLAFPG
PLFMEGLADSALEDVENLRHLILWLLPGHMETQAAQEPEDDLTPTPSVISVTSHPWDPGSPGQAPPGG
EGDNTQLAGLEGERPEQEDMGLCSLEHLPPRTRNSGIWESPELDRNLAEDASSTEAGGYKVRKAEVAG
SKVVPALPESGGSEPGPEVEGGTKATGNCFYVSMPSGPPDSSTDHSEAPMSPPQPSLPAGQTEPQPQL
QGGNDPDRRPSRSPSLALRDVGMIFHTIEQLTLKLNRLKDMELAHRELLKSLGGESSGGTTPVGSFHT
AARWTDGSLSPPAKEPLASDRNSHELGPCPEDGSDAPLEDSTADAAAASGP
```

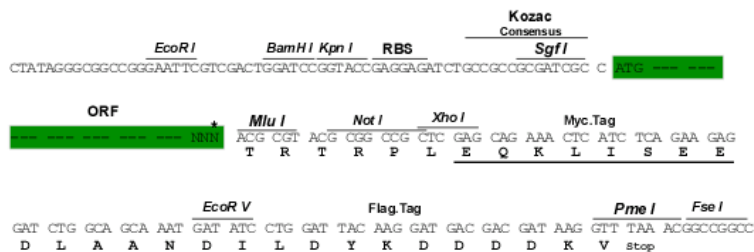
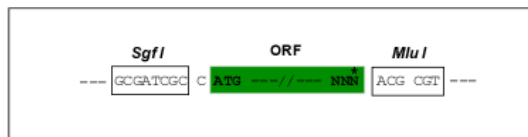
TRTRPLEQKLISEEDLAANDILDYKDDDDKV

Restriction Sites:

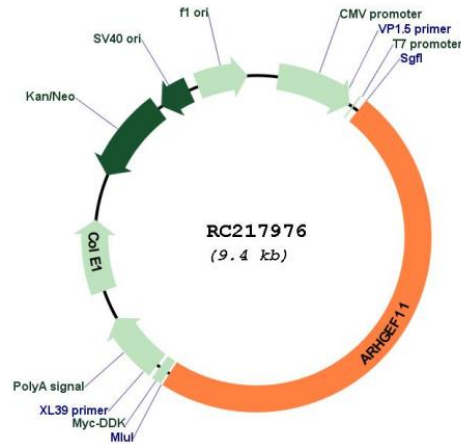
SgfI-MluI

Cloning Scheme:

Cloning sites used for ORF Shuttling:



* The last codon before the Stop codon of the ORF

Plasmid Map:


- ACCN:** NM_014784
- ORF Size:** 4566 bp
- OTI Disclaimer:** The molecular sequence of this clone aligns with the gene accession number as a point of reference only. However, individual transcript sequences of the same gene can differ through naturally occurring variations (e.g. polymorphisms), each with its own valid existence. This clone is substantially in agreement with the reference, but a complete review of all prevailing variants is recommended prior to use. [More info](#)
- OTI Annotation:** This clone was engineered to express the complete ORF with an expression tag. Expression varies depending on the nature of the gene.
- Components:** The ORF clone is ion-exchange column purified and shipped in a 2D barcoded Matrix tube containing 10ug of transfection-ready, dried plasmid DNA (reconstitute with 100 ul of water).

Reconstitution Method:

1. Centrifuge at 5,000xg for 5min.
2. Carefully open the tube and add 100ul of sterile water to dissolve the DNA.
3. Close the tube and incubate for 10 minutes at room temperature.
4. Briefly vortex the tube and then do a quick spin (less than 5000xg) to concentrate the liquid at the bottom.
5. Store the suspended plasmid at -20°C. The DNA is stable for at least one year from date of shipping when stored at -20°C.

RefSeq: [NM_014784.4](#)

RefSeq Size: 6784 bp

RefSeq ORF: 4569 bp

Locus ID: 9826

UniProt ID: [O15085](#)

Cytogenetics: 1q23.1

Domains: RhoGEF, RGS, PDZ, PH

Protein Families: Druggable Genome

Protein Pathways: Vascular smooth muscle contraction

MW: 167.7 kDa

Gene Summary: Rho GTPases play a fundamental role in numerous cellular processes that are initiated by extracellular stimuli that work through G protein coupled receptors. The encoded protein may form a complex with G proteins and stimulate Rho-dependent signals. A similar protein in rat interacts with glutamate transporter EAAT4 and modulates its glutamate transport activity. Expression of the rat protein induces the reorganization of the actin cytoskeleton and its overexpression induces the formation of membrane ruffling and filopodia. Two alternative transcripts encoding different isoforms have been described. [provided by RefSeq, Jul 2008]