

Product datasheet for **RC217975**

STON1 (NM_006873) Human Tagged ORF Clone

Product data:

Product Type:	Expression Plasmids
Product Name:	STON1 (NM_006873) Human Tagged ORF Clone
Tag:	Myc-DDK
Symbol:	STON1
Synonyms:	SALF; SBLF; STN1; STNB1
Mammalian Cell Selection:	Neomycin
Vector:	pCMV6-Entry (PS100001)
E. coli Selection:	Kanamycin (25 ug/mL)



[View online »](#)

ORF Nucleotide Sequence:

>RC217975 ORF sequence
 Red=Cloning site Blue=ORF Green=Tags(s)

TTTTGTAATACGACTCACTATAGGGCGGCCGGAATTCGTCGACTGGATCCGGTACCGAGGAGATCTGCC
 GCC**CGGATCGCC**

ATGTGCTCCACAATCCAGGCAATGGGTCACCTTTGATGATGATCCTGTCTTCAATCTTCTCAAAGT
 CAAAGAATTTTCTCTGGAGAATCAAGGTGTCTGTAGACCAAATGGACTGAAGCTGAACCTTCTGGCCT
 CAGGGAATTTCCAGTGGATCTTCTCCACCAGCAGCACTCCTCTCTCTCCCCCAATTGTAGATTTTAT
 TTCAGTCCAGGACCTCCAAGTAACTCTCTCTTTCTACACCTACCAAAGACTTCCAGGTTTTCTGGCA
 TCCCCAAAGCAGGGACTCATGTGCTTTATCCTATTCCAGAATCATCTTCAGACAGCCCACTCGCAATATC
 AGGAGGAGAATCTTCTTACTGCCTACCAGACCAACATGTTTATCCCATGCCTTGTACCCAGTGACCAC
 TCATGTACACATCCAACCCCAAAGTAGGTCTCCAGATGAAGTAACTCCTCAACAGGCTGAAAGCCTAG
 GATTCAAAGTGATGATCTCCCCAGTTTCAGTATTTTCGAGAGGACTGTGCTTTTTCAAGTCCATTTTG
 GAAAGATGAAGGCAGTGATTCCCATTTACCCTTGACCCACCAGGAAGCAAAAAGATGTTCTCATCAAGA
 AACAAAGGAGATGCCTATTGACCAAAAAAGCCTAAATAAGTGTTCCTCAACTATATCTGTGAGAAGCTTG
 AACATCTCCAGTCAGCTGAGAACCAAGACTCACTTAGAAGTTTGTCTATGCACTGTCTATGTGCTGAAGA
 AAATGCCTCTTCTTTGTCCCCACACACTCTTCAGGAGTCAGCCAAAATCCGGATGGTCTTTTCATGCTG
 AGAATTCCTGAGAAGAAGAATATGATGTCTTCCCGCAATGGGGACCAATTTTTCTGAAAGTTTTGCCTG
 GAGGAATTTTGCAGATGTATTATGAACAGGGATTAGAAAAACATTTAAAGAGATACAGCTTGATCCATA
 TTGTAGGCTTTTGAACCAAGGTTGAGAACTTCAGTGTAGCAGGAAAAATCCACTGTGAAGATTGAA
 CATGTGCTTACACAGAAAAAGGAAATACCATTCTAAGACAGAAGTAGTTCATGAACCTGACATAGAGC
 AGATGCTGAAGTTGGGGTCCACATCGTACCATGACTTCTTGTACTTTCTGACTACTGTGGAGGAGGACT
 GATGAAGTTGCCAGCTGTTTCAAACCAAAAAAGAACTACGAGGAGCAAGAAATTTCTTGAAATTTGTG
 GACAACTTTTGGGGTAAAGTCACAAAAGAGGAAAATTTGTTGAAAGTGCTGTGATAACTCAAATGTATT
 GCCTCTGCTTTGTGAATGGGAACCTGGAATGCTTTTTAACCTTGAATGACCTTGAGTTGCCGAAGCGAGA
 TGAATCTATTATGAGAAGGACTCAGAAAAAGGGGATTGATATTCTTGACTACCATTTTCATAAGTGT
 GTGAATGTACAAGAATTTGAGCAATCAAGAATCATTAAGTTTGTACCTCTGGATGCCTGCCGTTTGAGC
 TGATGCGTTTCAAGACTTTGTATAATGGGGATAATCTTCCCTTTTCTTGAAGTCTGTAGTGGTTGTCCA
 GGGAGCATACGTGGAACCTCAGGCTTTTGTCAACATGGCCTCATTGGCGCAGAGGTATCCTATGCTGGT
 TCCTTAAGGTCTGTGACAATATAAGGATACACTTTCCTGTCCCATCGCAGTGGATCAAGGCCCTTTGGA
 CCATGAACCTCCAGAGGCAAGTCTCTGAAAGCTAAAATGAACCGCCGAGCATGTCTGGGGAGTTTACA
 GGAACCTGAATCTGAACCTGTCAATTCAAGTCACTGTGGGGTCAGCAAAAATATGAGAGTGCCTACCAGGCA
 GTGGTATGGAAGATAGATCGGCTTCCAGACAAAATTCAGTCTAGATCATCCCCATTGTCTGTCTATACA
 AATTAGAGCTTGATCAGACCAAGAAATTCCTCTGATTGGTATCCATTTGCTACTGTTCAGTTTTCCGT
 GCCTGACACCTGTGCCTCAAGGACAGAGGTGAGTCTCTGGGAGTGGAGAGTGATGTCCAGCCACAGAAA
 CATGTTTCAGCAGCGAGCTTGCTACAACATCCAGGTTGAAATAGAAAAAAGTGGATTAATTCGATGGAG
 AAGACCCAGATAAAAATGGTGACTGCATAACTCAG

ACGCGTACGCGGCCGCTCGAGCAGAACTCATCTCAGAAGAGGATCTGGCAGCAAATGATATCCTGGATT
 ACAAGGATGACGACGATAAGGTTTAA

Protein Sequence: >RC217975 protein sequence
Red=Cloning site Green=Tags(s)

```
MCSTNPGKWWTFDDDDPAVQSSQKSKNFPLENQVCRPNGLKLNLPGLREFPSGSSSTSTPLSSPIVDFY
FSPGPPNSPLSTPTKDFPGFPGIPKAGTHVLYPIPESSSDSPLAISGGESSLLPTRPTCLSHALLPSDH
SCTHPTPKVGLPDEVNPQQAESLGFQSDDL PQFYFREDCAFSSPFWKDEGSDSHFTLDPGSKKMFSSR
NKEMPIDQKSLNKCSLNYICEKLEHLQSAENQDSLRSLSMHCLCAEENASSFVPHTLFRSQPKSGWSFML
RIPEKKNMSSRQWGPIFLKVLPGGILQMYEEQGLEKPFKEIQLDPYCRLEPKVENFSVAGKIHTVKIE
HVSYTEKRKYHSKTEVVHEPDIEQMLKLGSTSYHDFLDFLTVEEELMKLPAVSKPKKNYEEQEISLEIV
DNFWGKVTKEGKFVESAVITQMYCLCFVNGNLECFLLNDLELPKRDESYEKDSEKKGIDILDYHFHKC
VNVQEFESRIIKFVPLDACRFELMRFKTLYNGDNLPSLKSVVVVQAYVELQAFVNMASLAQRSSYAG
SLRSCDNIRIHFPVPSQWIKALWTMNLQRQKSLKAKMNRRACLGSLQELESEPIQVTVGSAYKESAYQA
VWVKIDRLPDKNSLDHPHCLSYKLELGSQEIIPSDWYFPATVQFSVPDTCASRTEVRS LGVESDVQPQK
HVQQRACYNIQVEIEKKWIKIDGEDDPKIGDCITQ
```

TRTRPLEQKLISEEDLAANDILDYKDDDDKV

Chromatograms: https://cdn.origene.com/chromatograms/mk6563_d07.zip

Restriction Sites: SgfI-MluI

Cloning Scheme:

Cloning sites used for ORF Shuttling:



* The last codon before the Stop codon of the ORF

ACCN: NM_006873

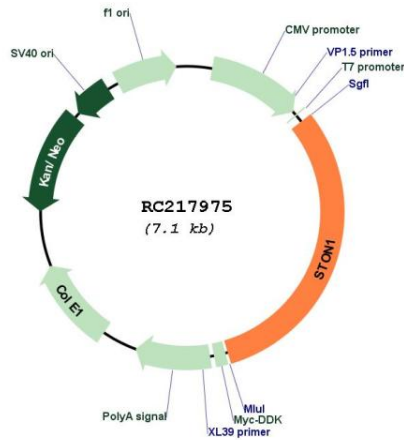
ORF Size: 2205 bp

OTI Disclaimer: The molecular sequence of this clone aligns with the gene accession number as a point of reference only. However, individual transcript sequences of the same gene can differ through naturally occurring variations (e.g. polymorphisms), each with its own valid existence. This clone is substantially in agreement with the reference, but a complete review of all prevailing variants is recommended prior to use. [More info](#)

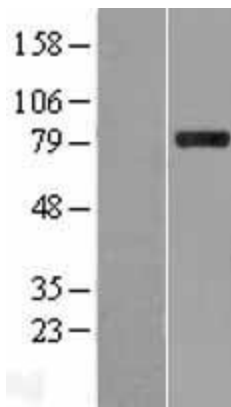
OTI Annotation: This clone was engineered to express the complete ORF with an expression tag. Expression varies depending on the nature of the gene.

Components:	The ORF clone is ion-exchange column purified and shipped in a 2D barcoded Matrix tube containing 10ug of transfection-ready, dried plasmid DNA (reconstitute with 100 ul of water).
Reconstitution Method:	<ol style="list-style-type: none">1. Centrifuge at 5,000xg for 5min.2. Carefully open the tube and add 100ul of sterile water to dissolve the DNA.3. Close the tube and incubate for 10 minutes at room temperature.4. Briefly vortex the tube and then do a quick spin (less than 5000xg) to concentrate the liquid at the bottom.5. Store the suspended plasmid at -20°C. The DNA is stable for at least one year from date of shipping when stored at -20°C.
RefSeq:	NM_006873.4
RefSeq Size:	5534 bp
RefSeq ORF:	2208 bp
Locus ID:	11037
UniProt ID:	Q9Y6Q2
Cytogenetics:	2p16.3
Domains:	Adap_comp_sub
Protein Families:	Transcription Factors
Protein Pathways:	Basal transcription factors
MW:	83.2 kDa
Gene Summary:	Endocytosis of cell surface proteins is mediated by a complex molecular machinery that assembles on the inner surface of the plasma membrane. This gene encodes one of two human homologs of the Drosophila melanogaster stoned B protein. This protein is related to components of the endocytic machinery and exhibits a modular structure consisting of an N-terminal proline-rich domain, a central region of homology specific to the human stoned B-like proteins, and a C-terminal region homologous to the mu subunits of adaptor protein (AP) complexes. Read-through transcription of this gene into the neighboring downstream gene, which encodes TFIIA-alpha/beta-like factor, generates a transcript (SALF), which encodes a fusion protein comprised of sequence sharing identity with each individual gene product. Alternative splicing results in multiple transcript variants. [provided by RefSeq, Oct 2010]

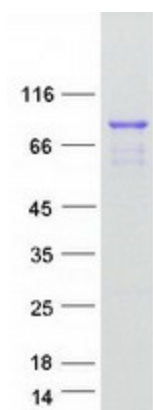
Product images:



Circular map for RC217975



Western blot validation of overexpression lysate (Cat# [LY416353]) using anti-DDK antibody (Cat# [TA50011-100]). Left: Cell lysates from untransfected HEK293T cells; Right: Cell lysates from HEK293T cells transfected with RC217975 using transfection reagent MegaTran 2.0 (Cat# [TT210002]).



Coomassie blue staining of purified STON1 protein (Cat# [TP317975]). The protein was produced from HEK293T cells transfected with STON1 cDNA clone (Cat# RC217975) using MegaTran 2.0 (Cat# [TT210002]).