

## Product datasheet for RC217974

### MAB21L3 (NM\_152367) Human Tagged ORF Clone

#### Product data:

Product Type:	Expression Plasmids
Product Name:	MAB21L3 (NM_152367) Human Tagged ORF Clone
Tag:	Myc-DDK
Symbol:	MAB21L3
Synonyms:	C1orf161
Mammalian Cell Selection:	Neomycin
Vector:	pCMV6-Entry (PS100001)
E. coli Selection:	Kanamycin (25 ug/mL)
ORF Nucleotide Sequence:	>RC217974 ORF sequence Red=Cloning site Blue=ORF Green=Tags(s)

TTTTGTAATACGACTCACTATAGGGCGCCGGGAATTCGTCGACTGGATCCGGTACCGAGGAGATCTGCC  
GCC**CGATCGCC**

ATGAAATACCTTACTGTGGGAGACTTAGAAGATTGCCTACTGAATAAGGTGGACTTGAGGCGCCAGCAGA  
TTTCCCAGGCTGTGGAGGAGGTGCAGAAAGTCGTTTCATCATTTGACCACAAACATCAGCAACCAAGACAT  
TAGATTTCAAGCTGTGCCTTACTCTGACACGTACAATGAAAATATTAAGGTTTTGGCTCCAGTCAGTTC  
CTCGTCACAGTCCCAATAAAAGGCCTGGCCGGGTACAGGGAGGCCAGGGAGCAGCACTGGCGGTACTACA  
CACTGCAGGGCACCAGGCTGCCCTGCCCGTTGCGGGACCCTGAGGGTCTGCAGCAGTGGCTGGAGGTGGA  
ACAGTTTTATGAAGAGCCTGTGGCAGTGGCATGAGACAGATGTGAACATCGACGGAGACATTGTGCCTGCC  
AAGGTCCTCCTAGTGTTCCGGAAGCTGGTGGAAAATGCAGTTAGAACCTGTCACCTCTCAGGTAAGGTCA  
GCCTGCTAGGAAACCGCTCTGCAGTTTGGGTTGCTGTGAAAACATCTGCATATCAGGTGGAACCTGGAGCT  
GGTCCCGCAGTGGAGATCCCCACCACCTGGTCCAAGAAAGCCCGGTGGCCTCGATGTCTGCAGCGCTGG  
CCTTCCAAGAGAGAGTGGAGTGCATCAAGTCGTTTGGTTTAACTTGTGGCCTGTTCAAATTACT  
GGCAGCTGAGCTTCTCCGTGCTGAGCAGGTGTTACTGGAACAGCTGGATGAAGATGGGGCTGCCGTAG  
GAAGTGTTTTAGGTGATGAGGCACCTGAAGGAGGACATCTGGTGCCAGGGAACAGGCCGTTATCAGC  
TCCCACCATCTGCAGACTGTGCTTTTTGGACCTGCGAGAAAATATCCCCACTTTAAAGACTGGCAGGTCT  
TCAGCAAAGCATTCTCGCCTGGTGGGAAAACGCACAAGTGCCTGAGCCAGCACTTCTGAAACACTA  
TTTCGTCCGGAACAGCAACCTTTTCAGTGCACCAACCCGACTGAACTGGACACTGTGGCCAAAAGCTG  
GCCACCTCTGAAGAACCCCCAGATCGGCCCGCC

**ACGCGT**ACGCGGCCGCTCGAGCAGAAACTCATCTCAGAAGAGGATCTGGCAGCAAATGATATCCTGGATT  
ACAAGGATGACGACGATAAGGTTTAA



[View online »](#)



**Reconstitution Method:**

1. Centrifuge at 5,000xg for 5min.
2. Carefully open the tube and add 100ul of sterile water to dissolve the DNA.
3. Close the tube and incubate for 10 minutes at room temperature.
4. Briefly vortex the tube and then do a quick spin (less than 5000xg) to concentrate the liquid at the bottom.
5. Store the suspended plasmid at -20°C. The DNA is stable for at least one year from date of shipping when stored at -20°C.

**RefSeq:** [NM\\_152367.2](#), [NP\\_689580.2](#)

**RefSeq Size:** 3229 bp

**RefSeq ORF:** 1089 bp

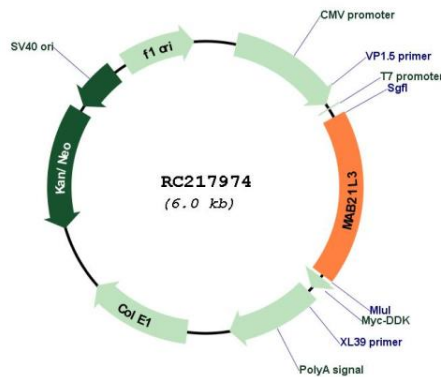
**Locus ID:** 126868

**UniProt ID:** [Q8N8X9](#)

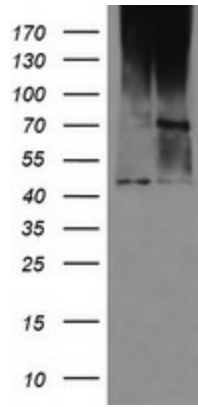
**Cytogenetics:** 1p13.1

**MW:** 42.4 kDa

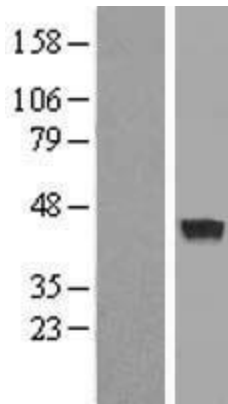
**Product images:**



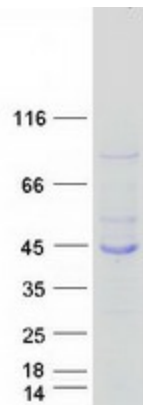
Circular map for RC217974



HEK293T cells were transfected with the pCMV6-ENTRY control (Cat# [PS100001], Left lane) or pCMV6-ENTRY C1orf161 (Cat# RC217974, Right lane) cDNA for 48 hrs and lysed. Equivalent amounts of cell lysates (5 ug per lane) were separated by SDS-PAGE and immunoblotted with anti-C1orf161(Cat# [TA502507]). Positive lysates [LY407616] (100ug) and [LC407616] (20ug) can be purchased separately from OriGene.



Western blot validation of overexpression lysate (Cat# [LY407616]) using anti-DDK antibody (Cat# [TA50011-100]). Left: Cell lysates from untransfected HEK293T cells; Right: Cell lysates from HEK293T cells transfected with RC217974 using transfection reagent MegaTran 2.0 (Cat# [TT210002]).



Coomassie blue staining of purified MAB21L3 protein (Cat# [TP317974]). The protein was produced from HEK293T cells transfected with MAB21L3 cDNA clone (Cat# RC217974) using MegaTran 2.0 (Cat# [TT210002]).