

Product datasheet for **RC217969**

RbAp46 (RBBP7) (NM_002893) Human Tagged ORF Clone

Product data:

Product Type:	Expression Plasmids
Product Name:	RbAp46 (RBBP7) (NM_002893) Human Tagged ORF Clone
Tag:	Myc-DDK
Symbol:	RbAp46
Synonyms:	RbAp46
Mammalian Cell Selection:	Neomycin
Vector:	pCMV6-Entry (PS100001)
E. coli Selection:	Kanamycin (25 ug/mL)



[View online »](#)

ORF Nucleotide Sequence:

>RC217969 ORF sequence
 Red=Cloning site Blue=ORF Green=Tags(s)

TTTTGTAATACGACTCACTATAGGGCGGCCGGAATTCGTCGACTGGATCCGGTACCGAGGAGATCTGCC
 GCC**GCGATCGCC**

ATGGCGAGTAAAGAGATGTTTGAAGATACTGTGGAGGAGCGTGTCAATGAAGAATATAAAATCTGGA
 AGAAGAATACACGTTTTCTATATGACCTGGTTATGACCCATGCTCTTCAGTGGCCAGTCTTACCGTTCA
 GTGGCTTCTGAAGTGACTAAACCTGAAGGAAAAGATTATGCCCTTCATTGGCTAGTGTGGGACTCAT
 ACGTCTGATGAGCAGAATCATCTGGTGGTTGCTCGAGTACATATCCCAATGATGATGCACAGTTTGATG
 CTTCCATTGTGACAGTGACAAGGGTGAATTTGGTGGCTTTGGTTCTGTAACAGGAAAAATTGAATGTA
 AATTAATCAATCACGAAGGAGAAGTAAACCGTCTCGTTACATGCCGAGAATCCTCACATCATTGCT
 ACAAAAACACCATCTTCTGATGTGTTGGTTTTGACTATACAAAACCCCTGCTAAACCAGACCCAAGT
 GAGAATGTAATCCTGATCTCAGATTAAGAGGTCACCAGAAGGAAGGCTATGGTCTCTCTGGAATCAA
 TTTGAGTGGACATCTCCTAAGTGATCTGATGACCATACTGTTTGTCTGTGGGATATAAACGCGAGGACCA
 AAAGAAGGCAAAATTGTGGATGCTAAAGCCATCTTACTGGCCACTCAGCTGTTGTAGAGGATGTGGCCT
 GGCACCTGCTGCACGAGTCATTGTTGGATCTGTTGCTGATGATCAGAAACTTATGATATGGGACACCAG
 GTCCAATACCACCTCCAAGCCGAGTCACCTGGTGGATGCGCACACTGCCGAAGTCAACTGCCTCTCATT
 AATCCCTACACGAATTTATTCTAGCCACCGGCTCTGCGGATAAGACCGTAGCTTTATGGGATCTGCGTA
 ACTTAAATTAATACTCCATACCTTCGAATCTCATAAAGATGAAATTTCCAGGTCCACTGGTCTCCACA
 TAATGAACTATTCTGGCTTCAAGTGGTACTGACCGCCGCTGAATGTGTGGGATTAAGTAAATTTGGG
 GAAGAACAATCAGCAGAAGATGCAGAAGATGGCCTCCAGAACTCCTGTTTATTCATGGAGGACACACTG
 CTAAGATTTAGATTTTAGCTGGAACCCCAATGAGCCTTGGGTCATTTGCTCAGTGTCTGAGGATAACAT
 CATGCAGATATGCAAAATGGCTGAAAATATTTACAATGATGAAGAGTCAGATGTACAGACATCCGAAGT
 GAGGGACAAGGATCT

ACGCGTACGCGGCCGCTCGAGCAGAACTCATCTCAGAAGAGGATCTGGCAGCAATGATATCCTGGATT
 ACAAGGATGACGACGATAAGGTTTAA

Protein Sequence:

>RC217969 protein sequence
 Red=Cloning site Green=Tags(s)

MASKEMFEDTVEERVINEEYKIWKKNTPFLYDLVMTHALQWPSLTVQWLPEVTKPEGKDYALHWLVLGTH
 TSDEQNHLLVVARVHIPNDDAQFDASHCDSKGEFGGFSVTGKIECEIKINHEGEVNRARYMPQNPPIIA
 TKTPSSDVLVFDYTKHPAKPDPSPGECNPDRLRGHQKEGYGLSWNSNL SGHLL SASDDHTVCLWDINAGP
 KEGKIVDAKAIFTGHSVAVVEDVAWHLLHESLFGSVADDQKLMIWDRSNTTSKPSHLVDAHTAEVNCLSF
 NPYSEFILATGSADKTVALWDLRNLKLLHTFESHKDEIFQVHWSPHNETILASSGTDRLRNVDLSKIG
 EEQSAEDAEDGPPELLFIHGHTAKISDFSWNPNEPWVICSVSEDNIMQIWQMAENIYNDEESDVTSEL
 EQGS

TRTRPLEQKLISEEDLAANDILDYKDDDDKV

Chromatograms:

https://cdn.origene.com/chromatograms/mk6444_f08.zip

Restriction Sites:

Sgfl-Mlul

Cloning Scheme:

Cloning sites used for ORF Shuttling:



* The last codon before the Stop codon of the ORF

ACCN: NM_002893

ORF Size: 1275 bp

OTI Disclaimer: The molecular sequence of this clone aligns with the gene accession number as a point of reference only. However, individual transcript sequences of the same gene can differ through naturally occurring variations (e.g. polymorphisms), each with its own valid existence. This clone is substantially in agreement with the reference, but a complete review of all prevailing variants is recommended prior to use. [More info](#)
OTI Annotation: This clone was engineered to express the complete ORF with an expression tag. Expression varies depending on the nature of the gene.

Components: The ORF clone is ion-exchange column purified and shipped in a 2D barcoded Matrix tube containing 10ug of transfection-ready, dried plasmid DNA (reconstitute with 100 ul of water).

Reconstitution Method:

1. Centrifuge at 5,000xg for 5min.
2. Carefully open the tube and add 100ul of sterile water to dissolve the DNA.
3. Close the tube and incubate for 10 minutes at room temperature.
4. Briefly vortex the tube and then do a quick spin (less than 5000xg) to concentrate the liquid at the bottom.
5. Store the suspended plasmid at -20°C. The DNA is stable for at least one year from date of shipping when stored at -20°C.

RefSeq: [NM_002893.4](#)
RefSeq Size: 2021 bp

RefSeq ORF: 1278 bp

Locus ID: 5931

UniProt ID: [Q16576](#)
Cytogenetics: Xp22.2

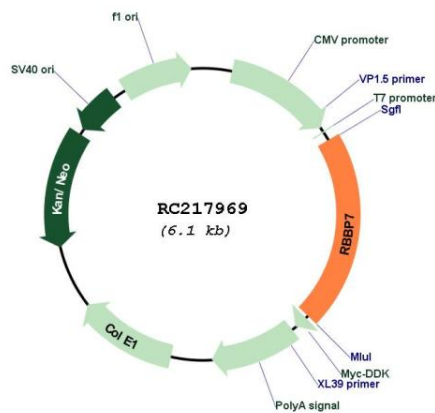
Domains: WD40

Protein Families: Druggable Genome

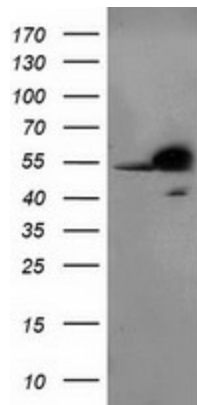
MW: 47.8 kDa

Gene Summary: This protein is a ubiquitously expressed nuclear protein and belongs to a highly conserved subfamily of WD-repeat proteins. It is found among several proteins that binds directly to retinoblastoma protein, which regulates cell proliferation. The encoded protein is found in many histone deacetylase complexes, including mSin3 co-repressor complex. It is also present in protein complexes involved in chromatin assembly. This protein can interact with BRCA1 tumor-suppressor gene and may have a role in the regulation of cell proliferation and differentiation. Two transcript variants encoding different isoforms have been found for this gene. [provided by RefSeq, Nov 2010]

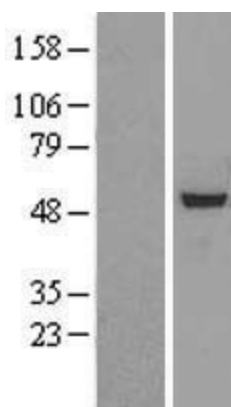
Product images:



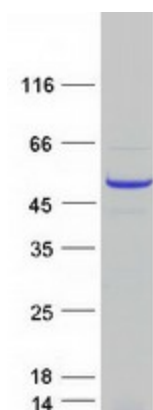
Circular map for RC217969



HEK293T cells were transfected with the pCMV6-ENTRY control (Cat# [PS100001], Left lane) or pCMV6-ENTRY RBBP7 (Cat# RC217969, Right lane) cDNA for 48 hrs and lysed. Equivalent amounts of cell lysates (5 ug per lane) were separated by SDS-PAGE and immunoblotted with anti-RBBP7(Cat# [TA503667]). Positive lysates [LY419038] (100ug) and [LC419038] (20ug) can be purchased separately from OriGene.



Western blot validation of overexpression lysate (Cat# [LY419038]) using anti-DDK antibody (Cat# [TA50011-100]). Left: Cell lysates from untransfected HEK293T cells; Right: Cell lysates from HEK293T cells transfected with RC217969 using transfection reagent MegaTran 2.0 (Cat# [TT210002]).



Coomassie blue staining of purified RBBP7 protein (Cat# [TP317969]). The protein was produced from HEK293T cells transfected with RBBP7 cDNA clone (Cat# RC217969) using MegaTran 2.0 (Cat# [TT210002]).